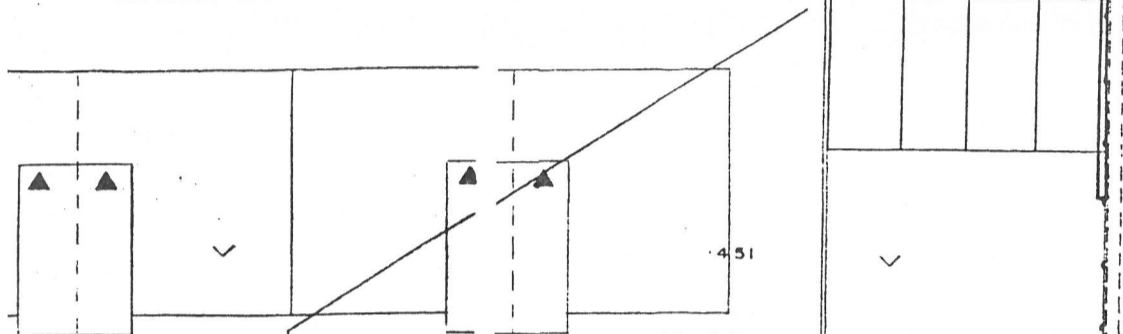
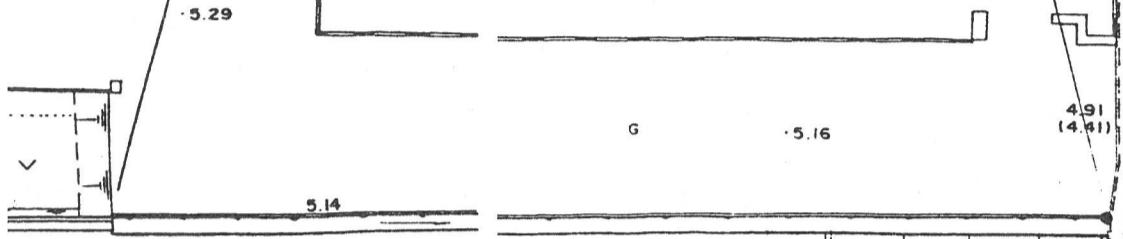




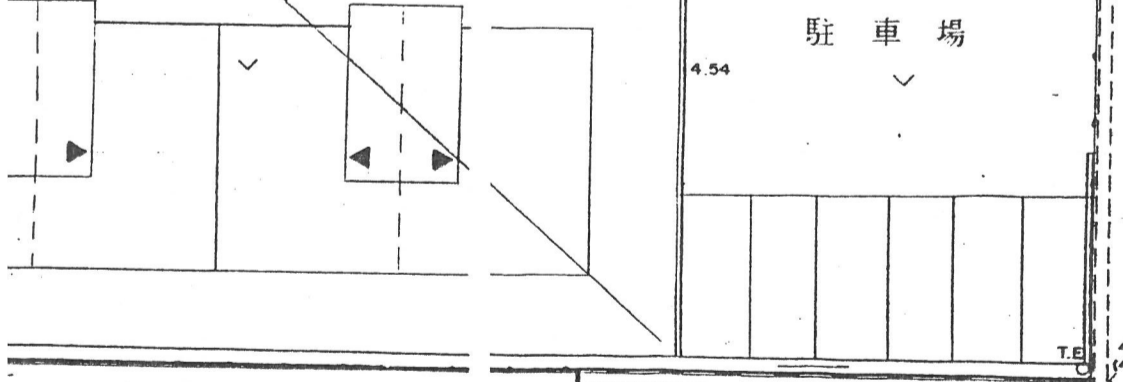
800
20.0m

1号側溝(3300×H400) L=32.6m

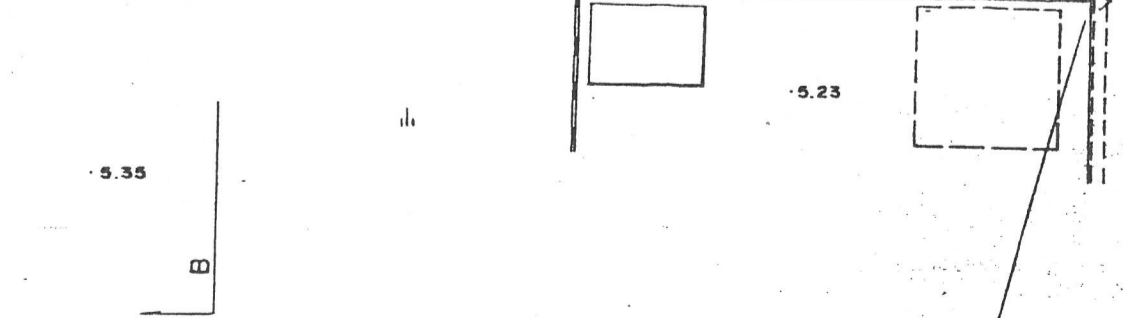


3号側溝(240×240) L=22.5m

2型縁石 L=60.8m



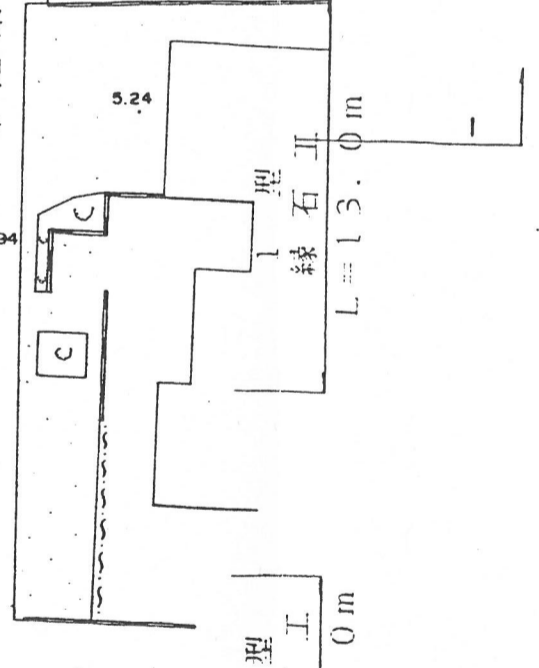
駐車場



1号側溝(B300×H400) L=41.5m

市道東福原新開東1号線(幅4m)

KBM
H=5.000



1型
縁石工
L=6.8m

1型
縁石工
L=7.0m

4.92
(4.42)

4.64