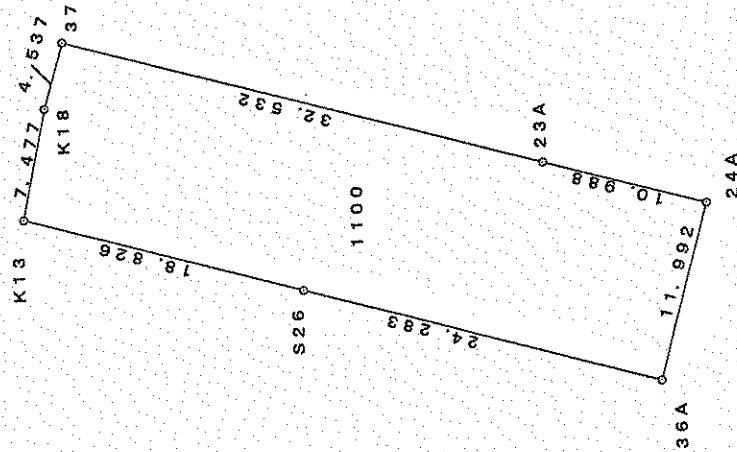
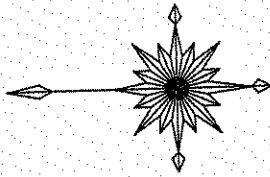


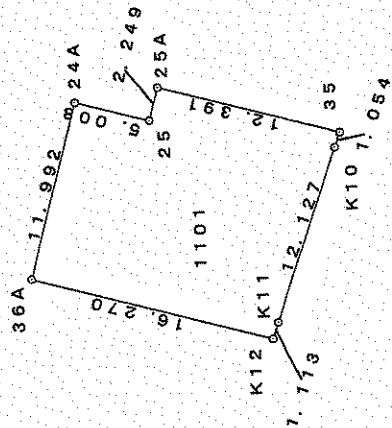
S=1:500



地番 NO	1100		Y_n	$Y_{n+1}-Y_{n-1}$	$X_n \cdot (Y_{n+1}-Y_{n-1})$
	X_n	Y_n			
36A	-61262.4380	-88669.7260	-5.1810	317400.691278	
S26	-61239.0110	-88663.3360	11.3440	-694695.340784	
K13	-61220.8480	-88658.3820	12.2730	-751363.467504	
K18	-61222.3750	-88651.0630	11.6870	-715505.896625	
37	-61223.6020	-88646.6950	-4.2036	257359.533367	
23A	-61254.9848	-88655.2666	-11.4600	701982.125808	
24A	-61265.5860	-88658.1650	-14.4594	885863.614208	
合計				1041.259748	
合計面積				520.629874	
合計地積				520.62	
				m ²	

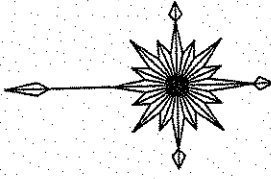
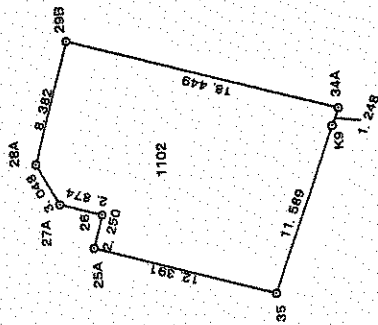


S=1:500



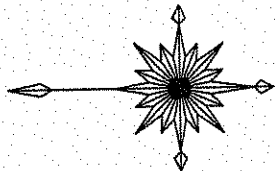
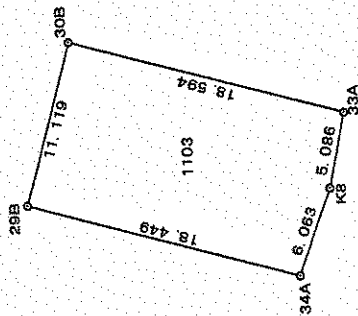
地番	1101				
NO	X _n	Y _n	Y _{n+1} -Y _{n-1}	X _n · (Y _{n+1} -Y _{n-1})	
36A	-61262.4380	-88669.7260	15.8530	-971193.429614	
24A	-61265.6860	-88658.1550	10.2610	-628646.177946	
25	-61270.4200	-88659.4650	0.8600	-52692.561200	
25A	-61271.0120	-88657.2950	-1.0900	66785.403080	
35	-61282.9660	-88660.5550	-4.2610	260513.888466	
K10	-61282.6060	-88661.5460	-12.4030	760088.162218	
K11	-61278.5040	-88672.9580	-12.4620	763652.716848	
K12	-61278.1340	-88674.0080	3.2320	-198050.929088	
			合計	457.072764	
			合計	面積	228.536382
				地積	228.53
					m ²

地番	面積
1101	228.536382 m ²



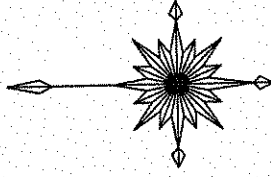
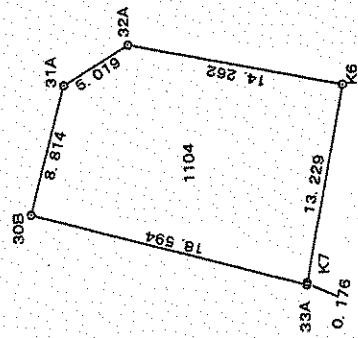
S=1:500

地番	1102					$X_n \cdot (Y_{n+1} - Y_{n-1})$
NO	X_n	Y_n	$Y_{n+1} - Y_{n-1}$	X_n		
35	-61282.9660	-88660.5550	-7.6330	467772.879478		
25A	-61271.0120	-88657.2950	5.4310	-332762.866172		
26	-61271.6040	-88655.1240	2.9141	-178551.581216		
27A	-61268.8273	-88654.3809	3.4031	-208503.946185		
28A	-61267.3398	-88651.7209	10.7467	-658421.720629		
29B	-61269.5463	-88643.6342	3.2329	-198078.316233		
34A	-61287.3450	-88648.4880	-6.0278	369427.858191		
K9	-61286.9210	-88649.6620	-12.0670	739549.275707		
			合計	431.582941		
			合計	215.791471		
			面積	215.79		m ²



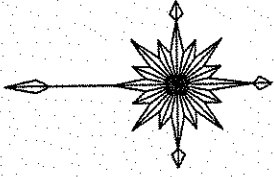
S=1:500

地 番		1103			
NO	X_n	Y_n	$Y_{n+1}-Y_n-1$	$X_n \cdot (Y_{n+1}-Y_n-1)$	
29B	-61269.5463	-88643.6342	15.5804	-954604.039173	
30B	-61272.4732	-88632.9076	5.8337	-357445.226907	
33A	-61290.4120	-88637.8005	-9.8774	605389.915489	
K8	-61289.4020	-88642.7850	-10.6875	655030.483875	
34A	-61287.3450	-88648.4880	-0.8492	52045.213374	
			合 計	416.346658	
			合 計 面 積	208.173329	
			地	208.17	
				m ²	

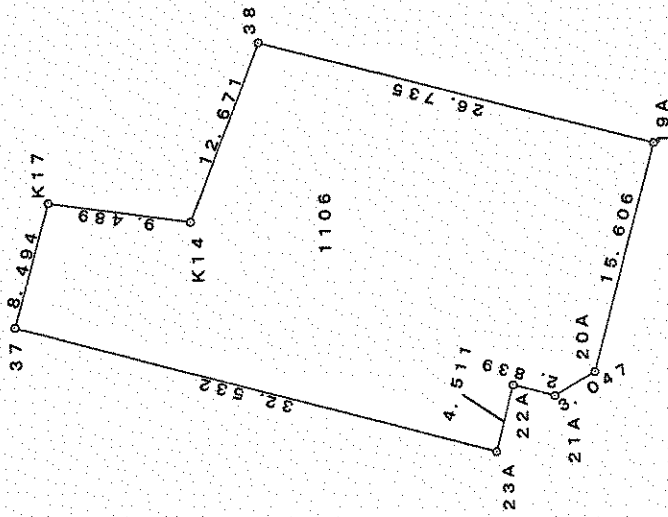


S=1:500

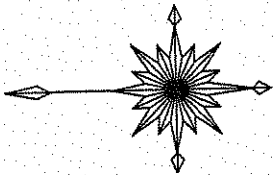
地番	1104			
NO	X_n	Y_n	$Y_{n+1}-Y_n$	$X_n \cdot (Y_{n+1}-Y_n)$
30B	-61272.4732	-88632.9076	13.3960	-820806.050987
31A	-61274.7933	-88624.4045	11.1229	-681553.398397
32A	-61279.0743	-88621.7847	-0.2615	15411.687186
K6	-61293.0440	-88624.6560	-15.8433	971084.084005
K7	-61290.4470	-88637.6280	-13.1445	805632.280592
33A	-61290.4180	-88637.8005	4.7204	-289315.260805
合計			453.341594	
合計面積			226.670797	
地積			226.67	m ²



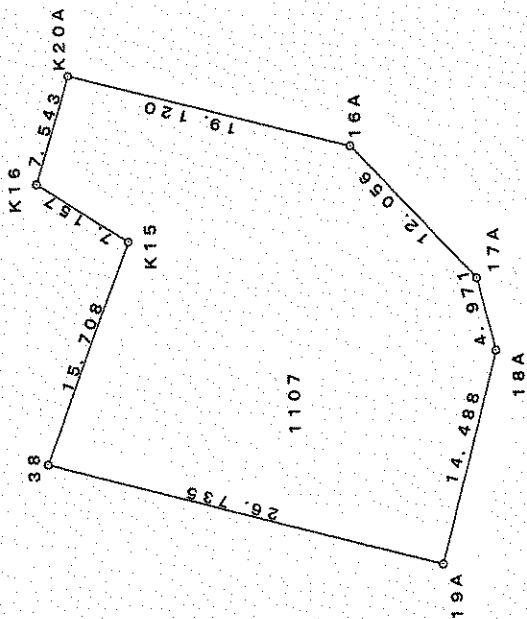
S=1:500



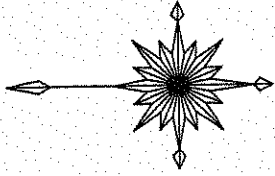
地番	1106					$X_n \cdot (Y_{n+1} - Y_{n-1})$
NO	X_n	Y_n	$Y_{n+1} - Y_{n-1}$	X_{n-1}	$Y_n - Y_{n-1}$	
23A	-61254.9848	-88655.2666	4.2206	-258532.788847	-258532.788847	
37	-61223.6020	-88646.6950	16.7486	-1025409.620457	-1025409.620457	
K17	-61225.9000	-88638.5180	6.8300	-418172.897000	-418172.897000	
K14	-61235.2930	-88639.8650	10.4690	-641072.282417	-641072.282417	
38	-61239.8700	-88638.0490	4.7804	-292751.074548	-292751.074548	
19A	-61265.6628	-88635.0846	-22.0892	1353309.478722	1353309.478722	
20A	-61261.5475	-88650.1382	-16.5840	1015961.503740	1015961.503740	
21A	-61258.9128	-88651.6686	-0.7774	47622.678811	47622.678811	
22A	-61256.1754	-88650.9156	-3.5980	220399.719089	220399.719089	
合計					合計	1354.717093
合計面積					合計面積	677.358547
合計地積					合計地積	677.35 m ²



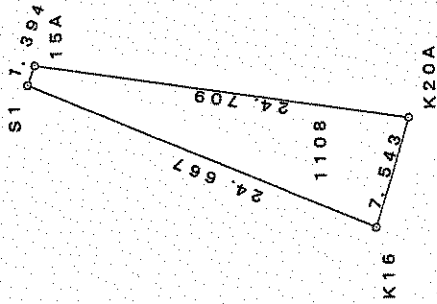
S=1:500



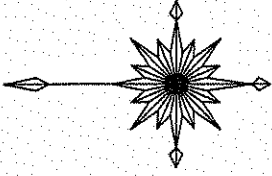
地番 1107		X_n	Y_n	$Y_{n+1}-Y_n$	$X_n \cdot (Y_{n+1}-Y_n)$
NO					
38		-61239.8700	-88628.0490	21.6826	-1327839.605262
K15		-61245.5450	-88613.4020	18.5670	-1137146.034015
K16		-61239.5570	-88609.4820	11.1193	-680941.006150
K20A		-61241.8090	-88602.2827	2.1688	-132821.235359
16A		-61250.2553	-88607.3132	-13.9935	857245.382541
17A		-61268.3189	-88616.2762	-13.7958	845245.473881
18A		-61269.4833	-88621.1090	-18.8084	1152380.949700
19A		-61265.6628	-88635.0846	-6.9400	425183.699832
		合計		合計	合計
				面積	面積
				地積	地積
				653.812584	653.81
				m^2	m^2



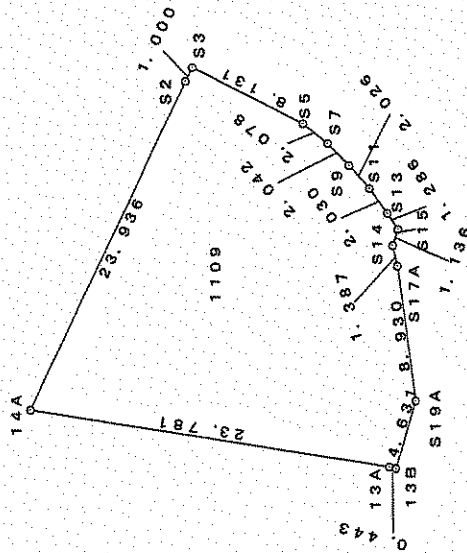
S=1:500



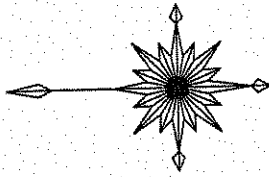
地番	1108		$Y_{n+1}-Y_{n-1}$	$X_n \cdot (Y_{n+1}-Y_{n-1})$
NO	X_n	Y_n		
K16	-61239.5570	-88609.4820	2.5587	-156693.654496
S1	-61216.9020	-88599.7240	11.0589	-676991.597528
15A	-61217.4030	-88598.4231	-2.5587	156636.969056
K20A	-61241.8090	-88602.2827	-11.0589	677267.041550
			合計	218.758582
			合計面積	109.379291
			地積	109.37
				m ²



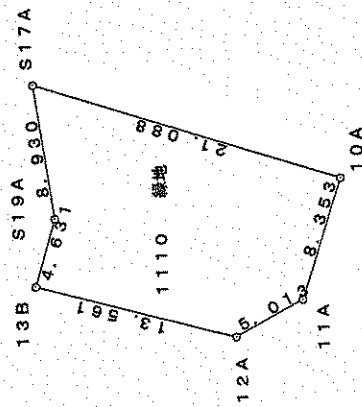
S=1:500



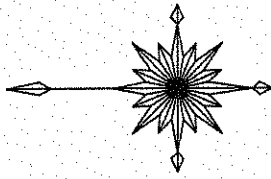
地番		1109				
NO	X_n	Y_n	$Y_{n+1}-Y_n-1$	$X_n \cdot (Y_{n+1}-Y_n-1)$	$X_n \cdot (Y_n-1)$	
13B	-61243.5247	-88596.5355	-4.3174	264412.793540	264412.793540	
13A	-61243.0970	-88596.4193	3.8377	-235032.633357	-235032.633357	
14A	-61219.6095	-88592.6978	25.3973	-1554812.788354	-1554812.788354	
S2	-61229.7620	-88571.0220	22.5818	-1392678.239532	-1392678.239532	
S3	-61230.1860	-88570.1160	-2.8190	172607.894334	172607.894334	
S5	-61237.4140	-88573.8410	-5.0110	306860.681554	306860.681554	
S7	-61239.0460	-88575.1270	-2.7680	169509.679328	169509.679328	
S9	-61240.4510	-88576.6090	-3.0100	184333.757510	184333.757510	
S11	-61241.7810	-88578.1370	-3.1490	192850.368369	192850.368369	
S13	-61243.0030	-88579.7580	-2.6960	165111.136088	165111.136088	
S15	-61243.7080	-88580.8330	-2.1480	131551.484784	131551.484784	
S14	-61243.3360	-88581.9060	-2.4189	148141.505450	148141.505450	
S17A	-61243.6715	-88583.2519	-10.1959	624434.350247	624434.350247	
S19A	-61244.8613	-88592.1019	-13.2836	813552.239565	813552.239565	
合計			842.229526	421.114763	421.11	
合計			面積	地積	m ²	



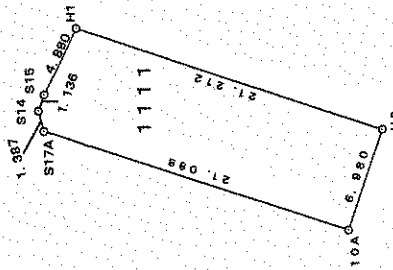
S=1:500



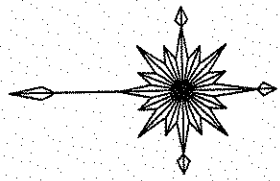
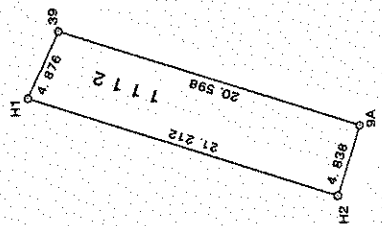
地番	1110 綠地	X_n	Y_n	$Y_{n+1}-Y_{n-1}$	$X_n \cdot (Y_{n+1}-Y_{n-1})$
NO					
13B		-61243.5247	-88596.5355	8.0073	-490395.275330
S19A		-61244.8613	-88592.1019	13.2836	-813552.239565
S17A		-61243.6715	-88583.2519	2.2691	-138355.578286
10A		-61263.7034	-88589.8428	-14.5065	888721.913372
11A		-61261.0348	-88597.7584	-10.2664	628930.287671
12A		-61256.6068	-88600.1092	1.2229	-74910.704456
			合計	合計	合計
				面積	219.201703
				地積	219.20
					m ²



S=1:500

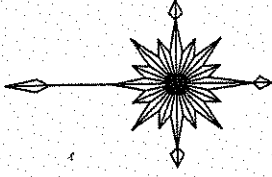


地番	1111			
NO	X _n	Y _n	Y _{n+1} -Y _{n-1}	X _n · (Y _{n+1} -Y _{n-1})
10A	-61263.7034	-88589.8428	-0.0227	1390.686067
S17A	-61243.6715	-88583.2519	7.9368	-486078.771961
S14	-61243.3360	-88581.9060	2.4189	-148141.505450
S15	-61243.7080	-88580.8330	5.4630	-334574.376804
H1	-61245.8395	-88576.4430	-2.3962	146757.280610
H2	-61265.9366	-88583.2292	-13.3998	820951.297253
		合計		304.609715
		合計面積		152.304858
		地積		152.30 m ²



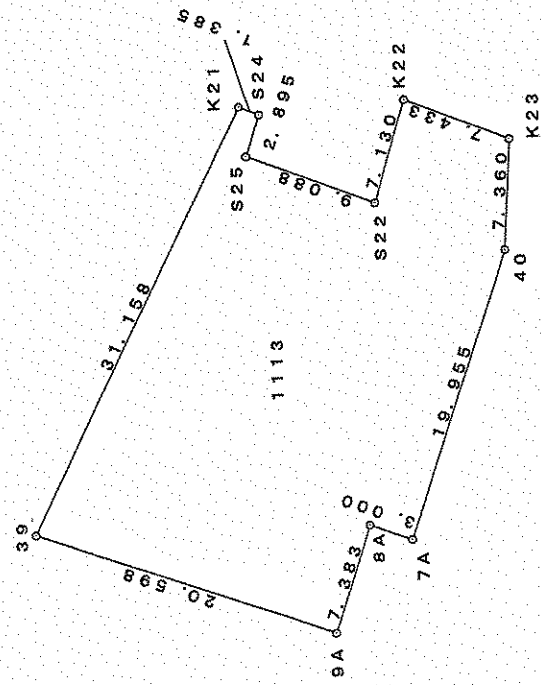
S=1:500

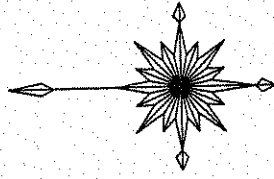
地番 NO	1112		Y _n	Y _{n+1} -Y _{n-1}	X _n · (Y _{n+1} -Y _{n-1})
	X _n	Y _n			
H1	-61245.8395	-88576.4430	11.1722	-684250.768062	
39	-61247.9690	-88572.0570	-2.2022	134880.277332	
9A	-61267.4845	-88578.6452	-11.1722	684492.590331	
H2	-61265.9366	-88583.2392	2.2022	-134919.845581	
合計				202.254020	
合計面積				101.127010	m ²
地積				101.12	m ²



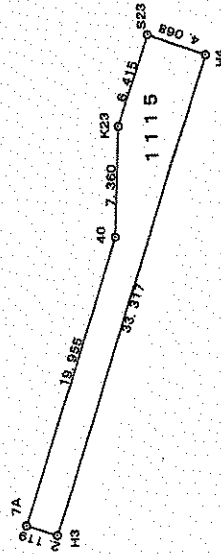
S=1:500

地番	1113				$X_n \cdot (Y_{n+1} - Y_{n-1})$
NO	X_n	Y_n	$Y_{n+1} - Y_{n-1}$	$X_{n+1} - X_{n-1}$	
39	-61247.9690	-88572.0570	34.6182	-2120294.440436	
K21	-61261.5760	-88544.0270	27.4990	-1684632.078424	
S24	-61262.8550	-88544.5580	-3.2970	201983.632935	
S25	-61261.9990	-88547.3240	-5.9480	364386.370052	
S22	-61270.5120	-88550.5060	3.6550	-223943.721360	
K22	-61272.5350	-88543.6690	4.1500	-254281.020250	
K23	-61279.4650	-88546.3560	-10.0360	615000.710740	
40	-61279.0700	-88553.7050	-26.2563	1608961.645641	
7A	-61272.6876	-88572.6123	-17.9452	1099550.633520	
8A	-61269.8465	-88571.6502	-6.0329	369634.856950	
9A	-61267.4845	-88578.6452	-0.4068	24923.612695	
				合計	1290.202063
				合計面積	645.101032
				地積	645.10
					III

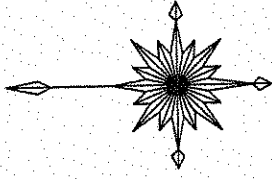




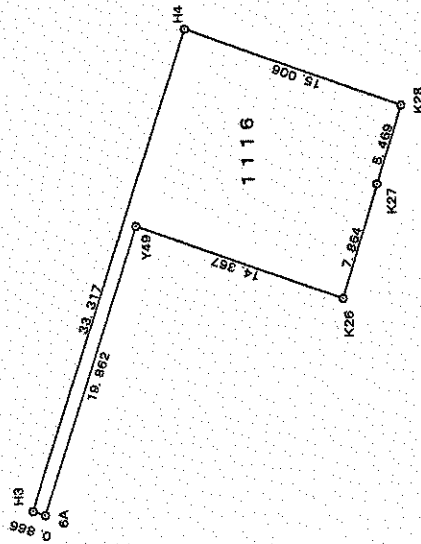
S=1:500



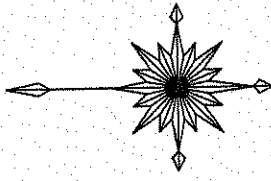
地番	1115		合計	
NO	X_n	Y_n	$Y_{n+1}-Y_n-1$	$X_n \cdot (Y_{n+1}-Y_n-1)$
H3	-61274.6949	-88573.2921	-30.8793	1892119.686226
7A	-61272.6876	-88572.6123	19.5871	-1200154.259290
40	-61279.0700	-88553.7050	26.2563	-1608961.645641
K23	-61279.4650	-88546.3560	13.4100	-821757.625650
S23	-61281.5680	-88540.2950	4.6230	-283304.688864
H4	-61285.9729	-88541.7330	-32.9971	2022239.578119
			合計	181.044800
			合計面積	90.522450
			地積	90.52
				m ²



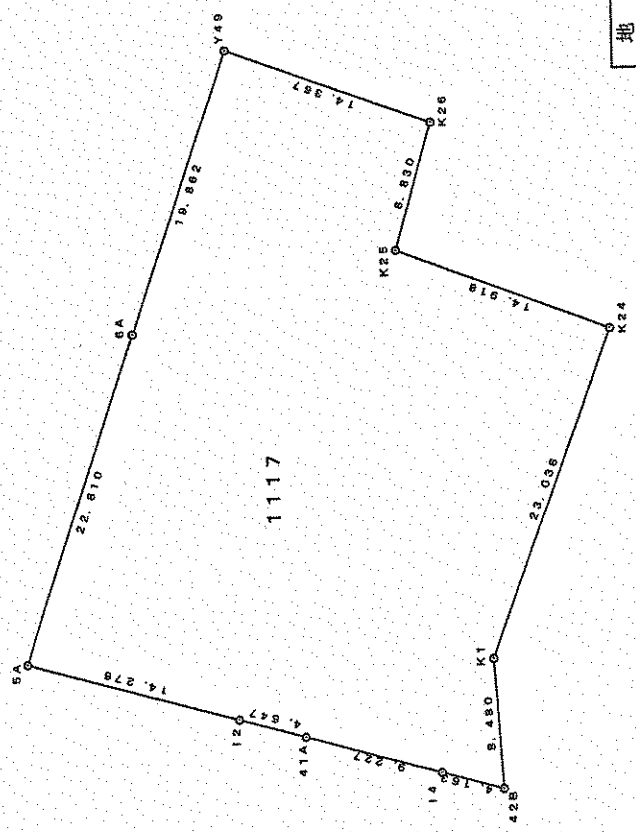
S=1:500



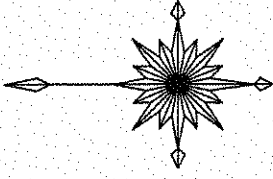
地番	① 1116					$X_n \cdot (Y_{n+1} - Y_{n-1})$
NO	X_n	Y_n	$Y_{n+1} - Y_{n-1}$	X_n	$(Y_{n+1} - Y_{n-1})$	
H3	-61274.6949	-88573.2921	31.8369	-1950796.334062		
H4	-61285.3729	-88541.7330	26.2541	-1608992.308654		
K28	-61299.4100	-88547.0380	-10.5110	644318.098510		
K27	-61297.7350	-88552.2440	-12.7010	778542.532235		
K26	-61295.3560	-88559.7390	-2.5120	153973.934272		
Y49	-61281.8810	-88554.7560	-13.8309	847583.567923		
6A	-61275.6153	-88573.5699	-18.5361	1135809.079152		
			合計	438.569376		
			合計面積	219.284688		
			地積	219.28		m ²



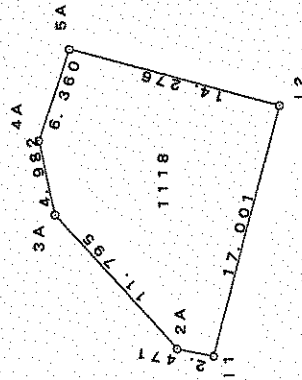
S=1:500



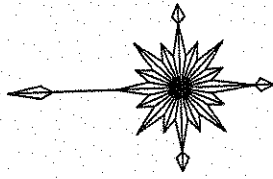
地番	1117					$X_n \cdot (Y_{n+1} - Y_{n-1})$
NO	\bar{X}_n	Y_n	$Y_{n+1} - Y_{n-1}$	Y_n	$X_n \cdot (Y_{n+1} - Y_{n-1})$	
5A	-61268.2336	-88595.1866	25.3763	-88595.1866	-1554761.076304	
6A	-61275.5153	-88573.5699	40.4306	-88573.5699	-2477405.848888	
Y49	-61281.8810	-88554.7560	13.8309	-88554.7560	-847583.567923	
K26	-61295.3560	-88559.7390	-13.4750	-88559.7390	825954.922100	
K25	-61292.9360	-88568.2310	-13.8790	-88568.2310	850684.658744	
K24	-61306.8470	-88573.6180	-26.9730	-88573.6180	1653629.584131	
K1	-61298.8020	-88595.2040	-30.0510	-88595.2040	1842090.298902	
42B	-61299.3100	-88603.6690	-7.3689	-88603.6690	451708.485459	
14	-61295.2939	-88602.5729	3.5254	-88602.5729	-216090.429115	
41A	-61286.3926	-88600.1436	3.6267	-88600.1436	-222267.360042	
12	-61282.0061	-88598.9462	4.9570	-88598.9462	-303774.904238	
合計					2184.762826	
合計面積					1092.381413	
合計地積					1092.38 m ²	



S=1:500

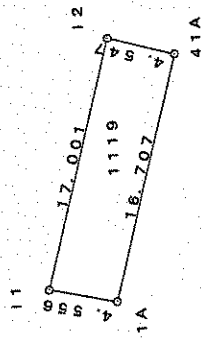


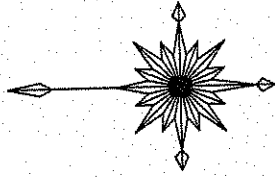
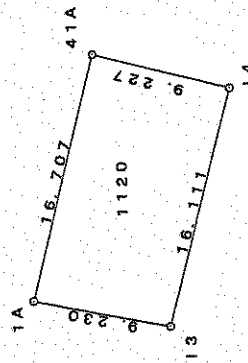
地番	1118				
NO	X_n	Y_n	$Y_{n+1}-Y_{n-1}$	$X_n \cdot (Y_{n+1}-Y_{n-1})$	
11	-61277.5318	-88615.3478	-15.9061	974686.548564	
2A	-61275.1105	-88614.8523	9.2548	-567088.892655	
3A	-61267.2110	-88606.0930	13.6384	-835586.730502	
4A	-61266.2034	-88601.2139	10.9064	-668193.720762	
5A	-61268.2336	-88596.1866	2.2677	-138937.973335	
12	-61282.0061	-88598.9462	-20.1612	1235518.781383	
合計				398.012693	
合計面積				199.006347	
地積				199.00	m ²



S=1:500

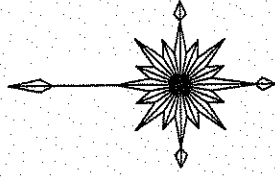
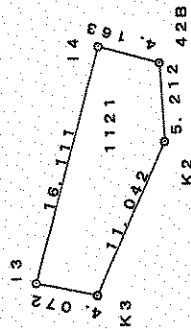
地番	1119	X_n	Y_n	$Y_{n+1}-Y_n$	$X_{n+1}-X_n$	$X_n \cdot (Y_{n+1}-Y_n)$
NO						
I1		-61277.5318	-88615.3478	17.3150	-1061020.463117	
I2		-61282.0061	-88598.9462	15.2042	-931743.877146	
41A		-61286.3926	-88600.1436	-17.3150	1061173.887869	
1A		-61281.9958	-88616.2612	-15.2042	931743.720542	
			合計			153.268148
			合計	面積		76.634074
				地積		76.63
						m ²





S=1:500

地番	1120			
NO	X_n	Y_n	$Y_{n+1}-Y_n-1$	$X_n \cdot (Y_{n+1}-Y_n-1)$
1A	-61281.9958	-88616.2612	17.9680	-1101114.900534
41A	-61286.3926	-88600.1436	13.6883	-838906.527827
14	-61295.2939	-88602.5729	-17.9680	1101353.840795
13	-61291.0386	-88618.1116	-13.6883	838970.123668
		合計	合計	合計
			面積	151.268051
			地積	151.26
				m ²



S=1:500

地 番		1121				
NO	X_n	Y_n	$Y_{n+1}-Y_n$	$X_{n+1}-X_n$	$(Y_{n+1}-Y_n) \cdot X_{n+1}$	
13	-61291.0386	-88618.1116	16.3551	-1002421.065407		
14	-61295.2939	-88602.5729	14.4426	-885263.411680		
42B	-61299.3100	-88603.6690	-6.3001	386191.782931		
K2	-61299.5910	-88608.8730	-15.2590	935370.459069		
K3	-61295.0380	-88618.9280	-9.2386	566280.245681		
			合 計	158.010594		
			合 計	79.0052970		
			面 積	79.00	m^2	
			地		m^2	