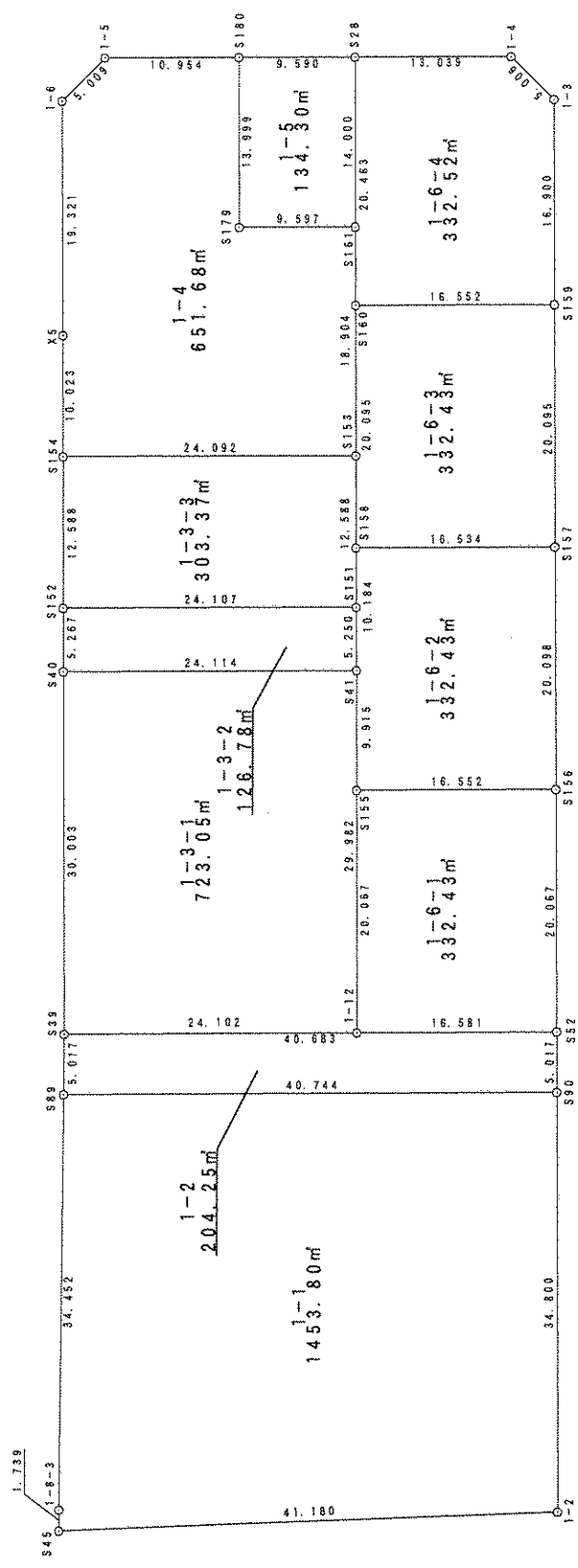


街區 原子一覽表 (1 街區)



直角座標法面積計算書

地番	1-1		X	Y	距離	方向角	$X_{n+1} - X_n$	$Y_{n+1} - Y_n$	$Y_n \cdot (X_{n+1} - X_n)$	$X_n \cdot (Y_{n+1} - Y_n)$
点名										
S90			-59124.974	-92416.842	40.744	295° 11' 38"	48.808	-22.000	-4510689.152684	1300742.354869
S89			-59107.630	-92453.710	34.452	205° 59' 20"	-13.624	-51.965	1259614.522140	3071520.473246
1-8-3			-59138.598	-92468.807	1.739	205° 01' 17"	-32.544	-15.832	3009277.077685	936295.617755
S45			-59140.174	-92469.543	41.180	113° 15' 48"	-17.840	37.097	1649643.643648	-2193907.156468
1-2			-59156.438	-92431.710	34.800	25° 17' 34"	15.200	52.700	-1404938.488588	-3117558.891602
									倍面積	-2907.602200
									面積	1453.8011000
									地積	1453.80

直角座標法面積計算書

地番	1-2		X	Y	距離	方向角	$X_{n+1} - X_n$	$Y_{n+1} - Y_n$	$Y_n \cdot (X_{n+1} - X_n)$	$X_n \cdot (Y_{n+1} - Y_n)$
点名										
S89			-59107.630	-92453.710	40.744	115° 11' 38"	-21.854	34.669	2020470.374123	-2049229.955968
S90			-59124.974	-92416.842	5.017	25° 17' 34"	-12.808	39.011	1183683.698345	-2306548.475855
S52			-59120.438	-92414.699	40.683	295° 11' 38"	21.854	-34.669	-2019617.824306	2049674.005780
S39			-59103.120	-92451.512	5.017	205° 59' 20"	12.808	-39.011	-1184127.748157	2305695.926038
									倍面積	-408.500005
									面積	204.2500025
									地積	204.25

直角座標法面積計算書

地番 1-3-1									
点名	X	Y	距離	方向角	$X_{n+1} - X_n$	$Y_{n+1} - Y_n$	$Y_n \cdot (X_{n+1} - X_n)$	$X_n \cdot (Y_{n+1} - Y_n)$	$X_n \cdot (Y_{n+1} - Y_n) - Y_n \cdot (X_{n+1} - X_n)$
S40	-59075.987	-92438.708	30.003	205° 15' 44"	-16.850	-34.615	1557553.706505	2044895.675859	2044895.675859
S39	-59103.120	-92451.512	24.102	115° 11' 38"	-37.394	9.005	3457086.101019	-532243.665026	-532243.665026
1-12	-59113.380	-92429.702	29.982	25° 17' 02"	16.850	34.615	-1557401.970286	-2046190.039641	-2046190.039641
S41	-59086.271	-92416.897	24.114	295° 14' 41"	37.394	-9.005	-3455791.737237	532091.928807	532091.928807
					倍面積				
					面積				
					地積				
					723.05000005				
					723.05				

直角座標法面積計算書

地番 1-3-2									
点名	X	Y	距離	方向角	$X_{n+1} - X_n$	$Y_{n+1} - Y_n$	$Y_n \cdot (X_{n+1} - X_n)$	$X_n \cdot (Y_{n+1} - Y_n)$	$X_n \cdot (Y_{n+1} - Y_n) - Y_n \cdot (X_{n+1} - X_n)$
S151	-59081.521	-92414.660	24.107	295° 17' 09"	15.046	-19.561	-1390505.526464	1155684.933827	1155684.933827
S152	-59071.224	-92436.458	5.267	205° 17' 09"	5.535	-24.047	-511601.269552	1420493.048291	1420493.048291
S40	-59075.987	-92438.708	24.114	115° 14' 41"	-15.046	19.561	1390867.348479	-1155576.671814	-1155576.671814
S41	-59086.271	-92416.897	5.250	25° 12' 59"	-5.535	24.047	511493.007539	-1420854.870306	-1420854.870306
					倍面積				
					面積				
					地積				
					126.78000010				
					126.78				

直角座標法面積計算書

地番	1-3-3			距離	方向角	$X_{n+1} - X_n - 1$	$Y_{n+1} - Y_n - 1$	$Y_n \cdot (X_{n+1} - X_n - 1)$	$X_n \cdot (Y_{n+1} - Y_n - 1)$
点名	X	Y							
S153	-59070.133	-92409.297	24.092	295° 17' 09"	21.679	-16.421	-2003349.050607	969965.519031	
S154	-59059.842	-92431.081	12.588	205° 17' 09"	-1.092	-27.160	100901.493072	1604094.422904	
S152	-59071.224	-92436.458	24.107	115° 17' 09"	-21.679	16.421	2003937.865252	-969983.444392	
S151	-59081.521	-92414.660	12.588	25° 12' 59"	1.092	27.160	-100883.567711	-1604683.237549	
							倍面積	-606.740006	
							面積	303.3700030	
							地積	303.37	

直角座標法面積計算書

地番	1-4			距離	方向角	$X_{n+1} - X_n - 1$	$Y_{n+1} - Y_n - 1$	$Y_n \cdot (X_{n+1} - X_n - 1)$	$X_n \cdot (Y_{n+1} - Y_n - 1)$
点名	X	Y							
S154	-59059.842	-92431.081	24.092	115° 17' 09"	-19.353	17.503	178821.370376	-1033697.781428	
S153	-59070.133	-92409.297	18.904	25° 12' 59"	6.812	29.837	-629492.527558	-1762503.247051	
S161	-59053.030	-92401.244	9.597	295° 14' 46"	21.196	-0.626	-1958503.439549	36993.865208	
S179	-59048.937	-92409.924	13.999	25° 14' 46"	16.755	-2.710	-1548305.138943	160006.436460	
S180	-59036.275	-92403.953	10.954	295° 14' 18"	17.332	-3.938	-1601569.120134	232482.090852	
1-5	-59031.605	-92413.862	5.009	250° 16' 11"	2.980	-14.624	-275359.268916	863249.208599	
1-6	-59033.296	-92418.577	19.321	205° 11' 20"	-19.175	-12.938	1772114.031532	763781.292238	
X5	-59050.780	-92426.800	10.023	205° 17' 09"	-26.546	-12.504	2453597.468546	738384.759767	
							倍面積	-1303.375355	
							面積	651.6876775	
							地積	651.68	

直角座標法面積計算書

地番	1-6-2		X	Y	距離	方向角	$X_{n+1} - X_n$	$Y_{n+1} - Y_n$	$Y_n \cdot (X_{n+1} - X_n)$	$X_n \cdot (Y_{n+1} - Y_n)$
点名										
S157			-59084.096	-92397.597	16.534	295° 11' 38"	25.224	-6.404	-2330630.181134	378365.338460
S158			-59077.057	-92412.558	10.184	205° 12' 59"	-2.175	-19.300	200977.954109	1140203.010578
S41			-59086.271	-92416.897	9.915	205° 17' 02"	-18.178	-8.573	1679971.886317	506562.533563
S155			-59095.236	-92421.132	16.552	115° 11' 38"	-16.011	10.742	1479726.218153	-634830.497210
S156			-59102.281	-92406.155	20.098	25° 12' 03"	11.140	23.535	-1029381.016769	-1390965.246066
									倍面積	-664.860675
									面積	332.4303375
									地積	332.43

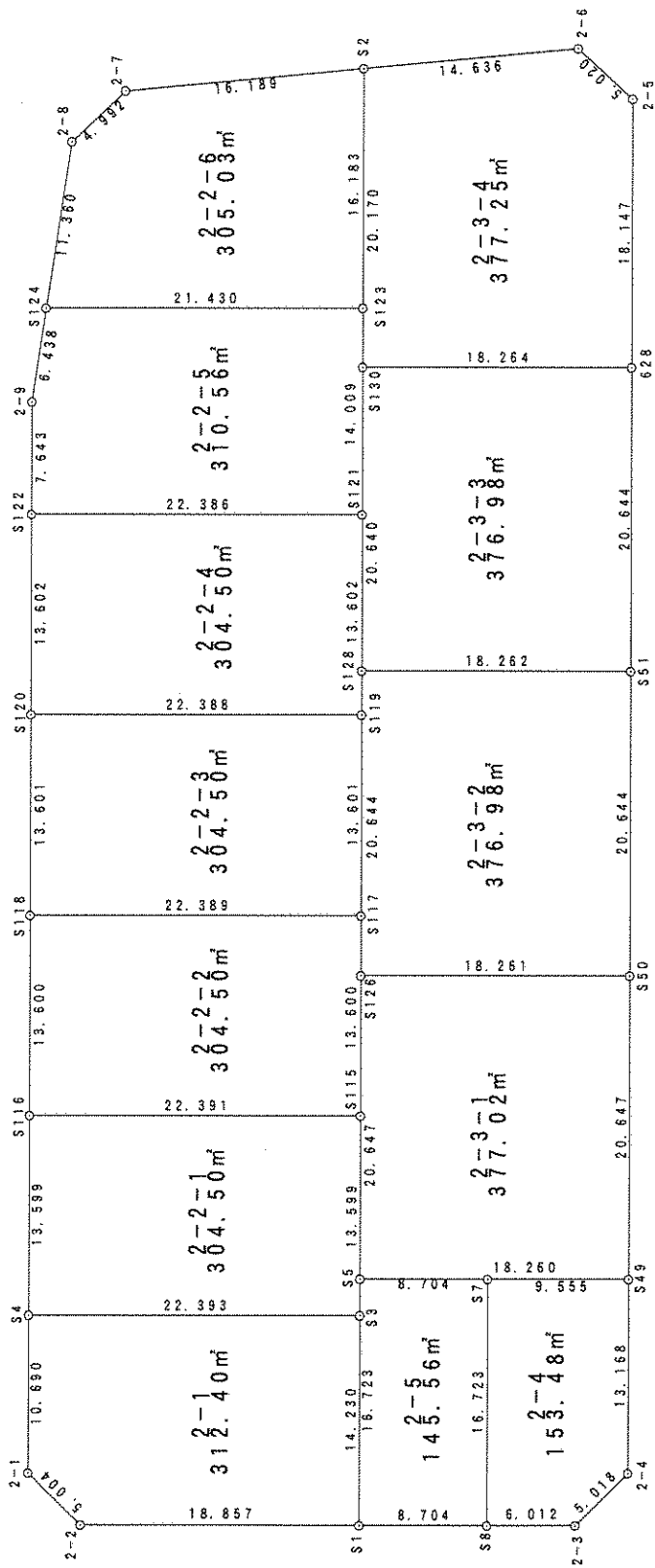
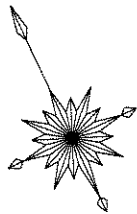
直角座標法面積計算書

地番	1-6-3		X	Y	距離	方向角	$X_{n+1} - X_n$	$Y_{n+1} - Y_n$	$Y_n \cdot (X_{n+1} - X_n)$	$X_n \cdot (Y_{n+1} - Y_n)$
点名										
S159			-59065.924	-92389.020	16.552	295° 11' 38"	25.218	-6.401	-2329879.237068	378052.229483
S160			-59058.878	-92403.997	20.095	205° 12' 59"	-11.134	-23.539	1028807.301835	1390160.835547
S158			-59077.057	-92412.558	16.534	115° 11' 38"	-25.218	6.401	2330472.835726	-378123.491496
S157			-59084.096	-92397.597	20.095	25° 15' 59"	11.134	23.539	-1028736.039822	-1390754.434205
									倍面積	-664.860671
									面積	332.4303355
									地積	332.43

直角座標法面積計算書

地番	X	Y	距離	方向角	$X_{n+1} - X_n$	$Y_{n+1} - Y_n$	$X_{n+1} - X_n$	$Y_{n+1} - Y_n$	$X_n \cdot (Y_{n+1} - Y_{n-1})$	$Y_n \cdot (X_{n+1} - X_{n-1})$	$X_n \cdot (Y_{n+1} - Y_{n-1})$
1-6-4											
S160	-59058.878	-92403.997	16.552	115° 11' 38"	-25.559	6.259	2361783.512090	-369661.439425			
S159	-59065.924	-92389.020	16.900	25° 15' 59"	8.237	22.191	-761052.013097	-1310726.832309			
1-3	-59050.640	-92381.806	5.006	340° 24' 51"	20.000	5.535	-1847597.172764	-326868.718629			
1-4	-59045.924	-92383.484	13.039	295° 14' 18"	10.276	-13.473	-949328.101261	795505.488996			
S28	-59040.364	-92395.279	20.463	205° 12' 59"	-12.954	-20.513	1196858.815941	1211086.460456			
							倍面積	-665.040911			
							面積	332.5204555			
							地積	332.52			

街區 原子一覽表 (2 街區)



直角座標法面積計算書

地番	2-1		X	Y	距離	方向角	X _{n+1} - X _{n-1}	Y _{n+1} - Y _{n-1}	Y _n · (X _{n+1} - X _{n-1})	X _n · (Y _{n+1} - Y _{n-1})
点名	S3		-59021.345	-92388.186	22.393	295° 13' 59"	22.418	-14.190	-2071189.110373	837498.616747
	S4		-59011.799	-92408.442	10.690	205° 14' 23"	-0.123	-24.814	11381.438267	1464331.782842
	2-1		-59021.468	-92413.001	5.004	160° 15' 53"	-14.379	-2.868	1328843.270968	169296.046204
	2-2		-59026.179	-92411.311	18.857	115° 13' 59"	-12.749	18.748	1178166.571054	-1106618.107031
	S1		-59034.218	-92394.253	14.230	25° 13' 59"	4.833	23.124	-446577.365173	-1365133.143504
									倍面積	-624.804742
									面積	312.4023710
									地積	312.40

直角座標法面積計算書

地番	2-2-1		X	Y	距離	方向角	X _{n+1} - X _{n-1}	Y _{n+1} - Y _{n-1}	Y _n · (X _{n+1} - X _{n-1})	X _n · (Y _{n+1} - Y _{n-1})
点名	S115		-59009.044	-92382.389	22.391	295° 13' 59"	21.847	-14.457	-2018239.497798	853118.643847
	S116		-58999.499	-92402.644	13.599	205° 14' 23"	-2.755	-26.053	254592.680186	1537127.784148
	S4		-59011.799	-92408.442	22.393	115° 13' 59"	-21.847	14.457	2018808.671942	-853158.477705
	S3		-59021.345	-92388.186	13.599	25° 13' 59"	2.755	26.053	-254552.846328	-1537696.958292
									倍面積	-609.008002
									面積	304.5040010
									地積	304.50

直角座標法面積計算書

地番	2-2-2				距離	方向角	$X_{n+1} - X_n$	$Y_{n+1} - Y_n$	$X_{n+1} - X_n$	$Y_{n+1} - Y_n$	$X_n \cdot (Y_{n+1} - Y_n)$
点名	X	Y	距離	方向角	$X_{n+1} - X_n$	$Y_{n+1} - Y_n$	$X_n \cdot (Y_{n+1} - Y_n)$	$Y_n \cdot (X_{n+1} - X_n)$	$X_n \cdot (Y_{n+1} - Y_n)$	$Y_n \cdot (X_{n+1} - X_n)$	$X_n \cdot (Y_{n+1} - Y_n) - Y_n \cdot (X_{n+1} - X_n)$
S117	-58996.742	-92376.592	22.389	295° 13' 59"	21.847	-14.456	-2018131.186162	-2018131.186162	852830.049619	-2018131.186162	852830.049619
S118	-58987.197	-92396.845	13.600	205° 14' 23"	-2.757	-26.052	1536745.856150	254722.125718	1536745.856150	254722.125718	1536745.856150
S116	-58999.499	-92402.644	22.391	115° 13' 59"	-21.847	14.456	-852869.901057	2018700.342726	-852869.901057	2018700.342726	-852869.901057
S115	-59009.044	-92382.389	13.600	25° 13' 59"	2.757	26.052	-1537315.012715	-254682.274280	-1537315.012715	-254682.274280	-1537315.012715
							倍面積		-609.008003		-609.008003
							面積		304.5040015		304.5040015
							地積		304.50		304.50

直角座標法面積計算書

地番	2-2-3				距離	方向角	$X_{n+1} - X_n$	$Y_{n+1} - Y_n$	$X_{n+1} - X_n$	$Y_{n+1} - Y_n$	$X_n \cdot (Y_{n+1} - Y_n)$
点名	X	Y	距離	方向角	$X_{n+1} - X_n$	$Y_{n+1} - Y_n$	$X_n \cdot (Y_{n+1} - Y_n)$	$Y_n \cdot (X_{n+1} - X_n)$	$X_n \cdot (Y_{n+1} - Y_n)$	$Y_n \cdot (X_{n+1} - X_n)$	$X_n \cdot (Y_{n+1} - Y_n) - Y_n \cdot (X_{n+1} - X_n)$
S119	-58984.439	-92370.794	22.388	295° 13' 59"	21.847	-14.454	-2018022.881569	-2018022.881569	852541.476961	-2018022.881569	852541.476961
S120	-58974.895	-92391.045	13.601	205° 14' 23"	-2.758	-26.051	1536363.930681	254851.588800	1536363.930681	254851.588800	1536363.930681
S118	-58987.197	-92396.845	22.389	115° 13' 59"	-21.847	14.454	-852581.345978	2018592.020559	-852581.345978	2018592.020559	-852581.345978
S117	-58996.742	-92376.592	13.601	25° 13' 59"	2.758	26.051	-1536933.069672	-254811.719783	-1536933.069672	-254811.719783	-1536933.069672
							倍面積		-609.008008		-609.008008
							面積		304.5040040		304.5040040
							地積		304.50		304.50

直角座標法面積計算書

2-2-4									
地番	点名	X	Y	距離	方向角	$X_{n+1} - X_n$	$Y_{n+1} - Y_n$	$Y_n \cdot (X_{n+1} - X_n)$	$X_n \cdot (Y_{n+1} - Y_n)$
	S121	-58972.135	-92364.995	22.386	295° 13' 59"	21.847	-14.452	-2017914.565544	852252.931783
	S122	-58962.592	-92385.245	13.602	205° 14' 23"	-2.760	-26.050	254981.050945	1535982.001846
	S120	-58974.895	-92391.045	22.388	115° 13' 59"	-21.847	14.452	2018483.686957	-852292.818376
	S119	-58984.439	-92370.794	13.602	25° 13' 59"	2.760	26.050	-254941.164352	-1536551.123260
倍面積									-609.008007
面積									304.5040035
地積									304.50

直角座標法面積計算書

2-2-5									
地番	点名	X	Y	距離	方向角	$X_{n+1} - X_n$	$Y_{n+1} - Y_n$	$Y_n \cdot (X_{n+1} - X_n)$	$X_n \cdot (Y_{n+1} - Y_n)$
	S123	-58959.462	-92359.023	21.430	295° 13' 59"	21.808	-13.413	-2014166.112836	790837.384851
	S124	-58950.327	-92378.408	6.438	213° 45' 59"	3.784	-22.963	-349567.614248	1353695.578928
	2-9	-58955.678	-92381.986	7.643	205° 14' 23"	-12.265	-6.837	1133041.811752	403078.858787
	S122	-58962.592	-92385.245	22.386	115° 13' 59"	-16.456	16.991	1520332.223866	-1001849.001260
	S121	-58972.135	-92364.995	14.009	25° 13' 59"	3.129	26.222	-289019.186484	-1546383.943356
倍面積									-621.122050
面積									310.5610250
地積									310.56

直角座標法面積計算書

2-2-6									
地番	X	Y	距離	方向角	X _{n+1} - X _{n-1}	Y _{n+1} - Y _{n-1}	Y _n · (X _{n+1} - X _{n-1})	X _n · (Y _{n+1} - Y _{n-1})	
点名									
S124	-58950.327	-92378.408	21.430	115° 13' 59"	-18.579	13.071	1716337.069711	-770554.660068	
S123	-58959.462	-92359.023	16.183	25° 13' 59"	5.503	26.284	-508255.842154	-1549692.403858	
S2	-58944.824	-92352.124	16.189	289° 51' 12"	20.137	-8.328	-1859660.763230	490884.525231	
2-7	-58939.326	-92367.351	4.992	251° 49' 32"	3.941	-19.970	-363994.204741	1177017.435315	
2-8	-58940.883	-92372.094	11.360	213° 45' 59"	-11.001	-11.057	1016183.804055	651735.039740	
							倍面積	-610.063640	
							面積	305.0318200	
							地積	305.03	

直角座標法面積計算書

2-3-1									
地番	X	Y	距離	方向角	X _{n+1} - X _{n-1}	Y _{n+1} - Y _{n-1}	Y _n · (X _{n+1} - X _{n-1})	X _n · (Y _{n+1} - Y _{n-1})	
点名									
S126	-59000.413	-92378.322	20.647	205° 13' 59"	-10.893	-25.321	1006239.226925	1493920.191364	
S5	-59019.090	-92387.124	18.260	115° 13' 59"	-26.461	7.715	2444678.832321	-455347.601696	
S49	-59026.874	-92370.607	20.647	25° 14' 13"	10.893	25.321	-1006155.187762	-1494590.203561	
S50	-59008.198	-92361.803	18.261	295° 13' 59"	26.461	-7.715	-2444008.820124	455263.562533	
							倍面積	-754.051360	
							面積	377.0256800	
							地積	377.02	

直角座標法面積計算書

地番	2-3-2		X	Y	距離	方向角	$X_{n+1} - X_n$	$Y_{n+1} - Y_n$	$Y_n \cdot (X_{n+1} - X_n)$	$X_n \cdot (Y_{n+1} - Y_n)$
点名										
S128			-58981.739	-92369.522	20.644	205° 13' 59"	-10.889	-25.320	1005769.394462	1493430.208580
S126			-59000.413	-92378.322	18.261	115° 13' 59"	-26.458	7.718	2444187.141688	-455376.828428
S50			-59008.198	-92361.803	20.644	25° 14' 13"	10.889	25.320	-1005685.354549	-1494100.142152
S51			-58989.525	-92353.002	18.262	295° 13' 59"	26.458	-7.718	-2443517.208116	455292.788515
									倍面積	-753.973485
									面積	376.9867425
									地積	376.98

直角座標法面積計算書

地番	2-3-3		X	Y	距離	方向角	$X_{n+1} - X_n$	$Y_{n+1} - Y_n$	$Y_n \cdot (X_{n+1} - X_n)$	$X_n \cdot (Y_{n+1} - Y_n)$
点名										
628			-58970.851	-92344.200	18.264	295° 13' 14"	26.456	-7.721	-2443025.807896	455321.831481
S130			-58963.069	-92360.723	20.640	205° 13' 59"	-10.888	-25.322	1005627.238350	1493038.884622
S128			-58981.739	-92369.522	18.262	115° 13' 59"	-26.456	7.721	2443695.707113	-455405.899493
S51			-58989.525	-92353.002	20.644	25° 14' 13"	10.888	25.322	-1005543.170337	-1493708.783838
									倍面積	-753.967228
									面積	376.9836140
									地積	376.98

直角座標法面積計算書

地番	2-3-4												
点名	X	Y	距離	方向角	$X_{n+1} - X_n - 1$	$Y_{n+1} - Y_n - 1$	$Y_n \cdot (X_{n+1} - X_n - 1)$	$X_n \cdot (Y_{n+1} - Y_n - 1)$					
S130	-58963.069	-92360.723	18.264	115° 13' 14"	-26.028	7.924	2403928.278609	-467251.362113					
628	-58970.851	-92344.200	18.147	25° 15' 50"	8.629	24.268	-796871.793177	-1431104.415925					
2-5	-58954.440	-92336.455	5.020	337° 43' 00"	21.057	5.842	-1944333.675921	-344383.246547					
2-6	-58949.794	-92338.358	14.636	289° 51' 12"	9.616	-15.670	-887915.908506	923720.329079					
S2	-58944.824	-92352.124	20.170	205° 13' 59"	-13.275	-22.364	1225947.605696	1318264.188805					
							倍面積	-754.506701					
							面積	377.2533505					
							地積	377.25					

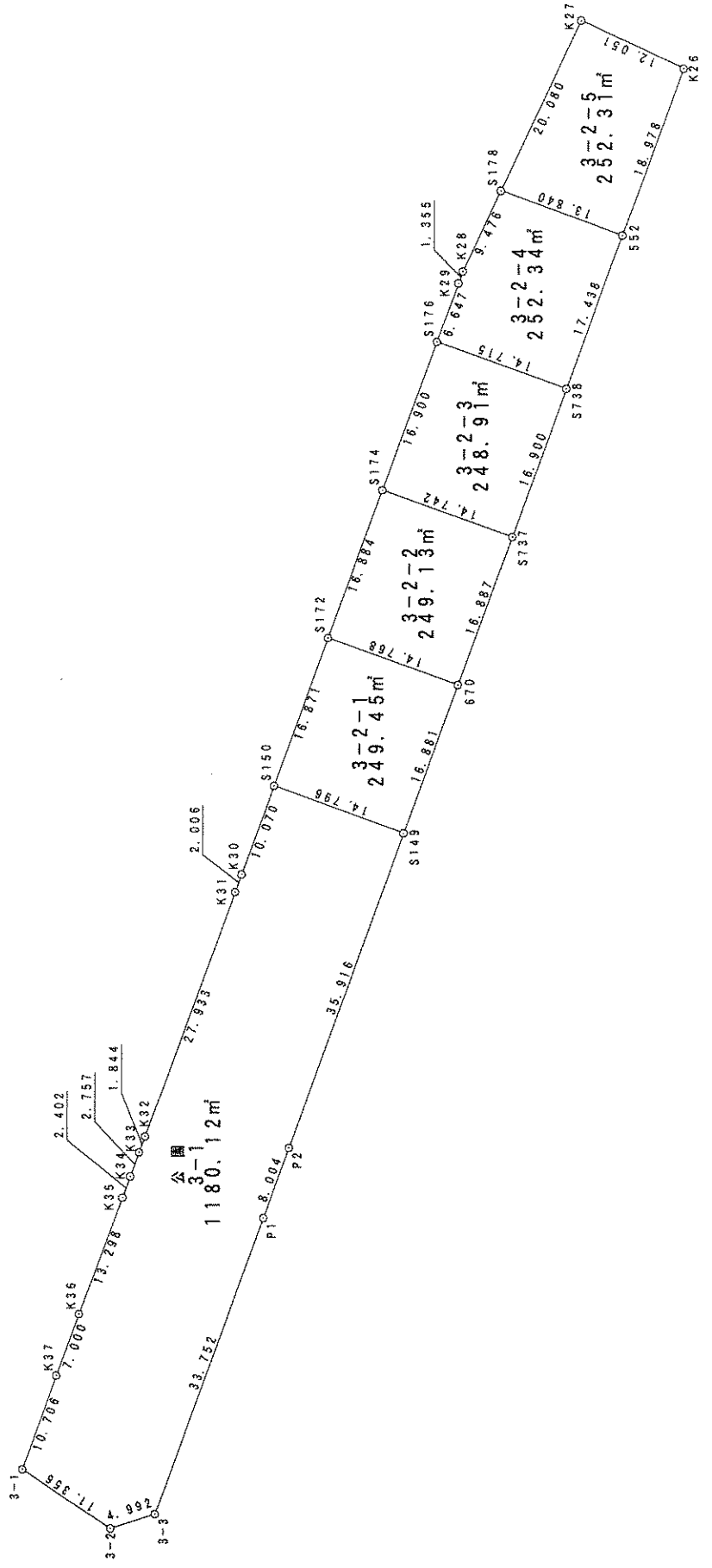
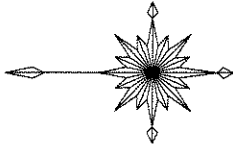
直角座標法面積計算書

地番	2-4												
点名	X	Y	距離	方向角	$X_{n+1} - X_n - 1$	$Y_{n+1} - Y_n - 1$	$Y_n \cdot (X_{n+1} - X_n - 1)$	$X_n \cdot (Y_{n+1} - Y_n - 1)$					
S7	-59022.801	-92379.250	16.723	205° 13' 59"	-11.054	-15.772	1021134.460133	930922.732688					
S8	-59037.928	-92386.379	6.012	115° 13' 59"	-17.690	-1.690	1634323.992362	99789.697017					
2-3	-59040.491	-92380.940	5.018	70° 07' 57"	-0.858	10.158	79241.747838	-599717.539575					
2-4	-59038.786	-92376.221	13.168	25° 14' 13"	13.617	10.334	-1257864.890466	-610085.540515					
S49	-59026.874	-92370.607	9.555	295° 13' 59"	15.985	-3.029	-1476528.343383	178783.683902					
							倍面積	-306.966483					
							面積	153.4832415					
							地積	153.48					

直角座標法面積計算書

地番	2-5												
点名	X	Y	距離	方向角	$X_{n+1} - X_n$	$Y_{n+1} - Y_n$	$Y_n \cdot (X_{n+1} - X_n)$	$X_n \cdot (Y_{n+1} - Y_n)$					
S8	-59037.928	-92386.379	16.723	25° 13' 59"	11.416	15.003	-1054717.583301	-885729.807056					
S7	-59022.801	-92379.250	8.704	295° 13' 59"	18.838	-0.745	-1740216.219244	43969.856118					
S5	-59019.090	-92387.124	16.723	205° 13' 59"	-11.416	-15.003	1054726.088088	885447.189633					
S1	-59034.218	-92394.253	8.704	115° 13' 59"	-18.838	0.745	1740498.836667	-43978.360906					
							倍面積	-291.122211					
							面積	145.5611055					
							地積	145.56					

街區 原子一覽表 (3 街區)



直角座標法面積計算書

地番	3-2-1		X	Y	距離	方向角	X _{n+1} - X _{n-1}	Y _{n+1} - Y _{n-1}	Y _n · (X _{n+1} - X _{n-1})	X _n · (Y _{n+1} - Y _{n-1})
点名										
S172			-58952.739	-92269.097	16.871	289° 58' 30"	19.650	-10.832	-1813120.483450	638597.829992
S150			-58946.976	-92284.954	14.796	199° 55' 38"	-8.147	-20.899	751806.276296	1231926.153162
S149			-58960.886	-92289.996	16.881	109° 52' 48"	-19.650	10.832	1813531.153979	-638686.076697
670			-58966.626	-92274.121	14.768	19° 53' 17"	8.147	20.899	-751718.029591	-1232336.823691
									倍面積	-498.917234
									面積	249.4586170
									地積	249.45

直角座標法面積計算書

地番	3-2-2		X	Y	距離	方向角	X _{n+1} - X _{n-1}	Y _{n+1} - Y _{n-1}	Y _n · (X _{n+1} - X _{n-1})	X _n · (Y _{n+1} - Y _{n-1})
点名										
S174			-58958.507	-92253.229	16.884	289° 58' 30"	19.631	-10.856	-1811027.521107	640064.612943
S172			-58952.739	-92269.097	14.768	199° 53' 17"	-8.119	-20.892	749160.333822	1231644.421228
670			-58966.626	-92274.121	16.887	109° 53' 09"	-19.631	10.856	1811437.654214	-640152.757570
S737			-58972.370	-92258.241	14.742	19° 52' 37"	8.119	20.892	-749072.189196	-1232054.554335
									倍面積	-498.277734
									面積	249.1388670
									地積	249.13

直角座標法面積計算書

3-2-3									
地番	点名	X	Y	距離	方向角	X _{n+1} - X _{n-1}	Y _{n+1} - Y _{n-1}	Y _n · (X _{n+1} - X _{n-1})	X _n · (Y _{n+1} - Y _{n-1})
	S176	-58964.280	-92237.346	16.900	289° 58' 30"	19.612	-10.880	-1808944.567950	641552.361652
	S174	-58958.507	-92253.229	14.742	199° 52' 37"	-8.090	-20.896	746330.854742	1231977.351007
	S737	-58972.370	-92258.241	16.900	109° 53' 09"	-19.612	10.880	1809354.370550	-641640.383995
	S738	-58978.119	-92242.349	14.715	19° 52' 37"	8.090	20.896	-746242.832399	-1232387.153607
								倍面積	-497.824943
								面積	248.9124715
								地積	248.91

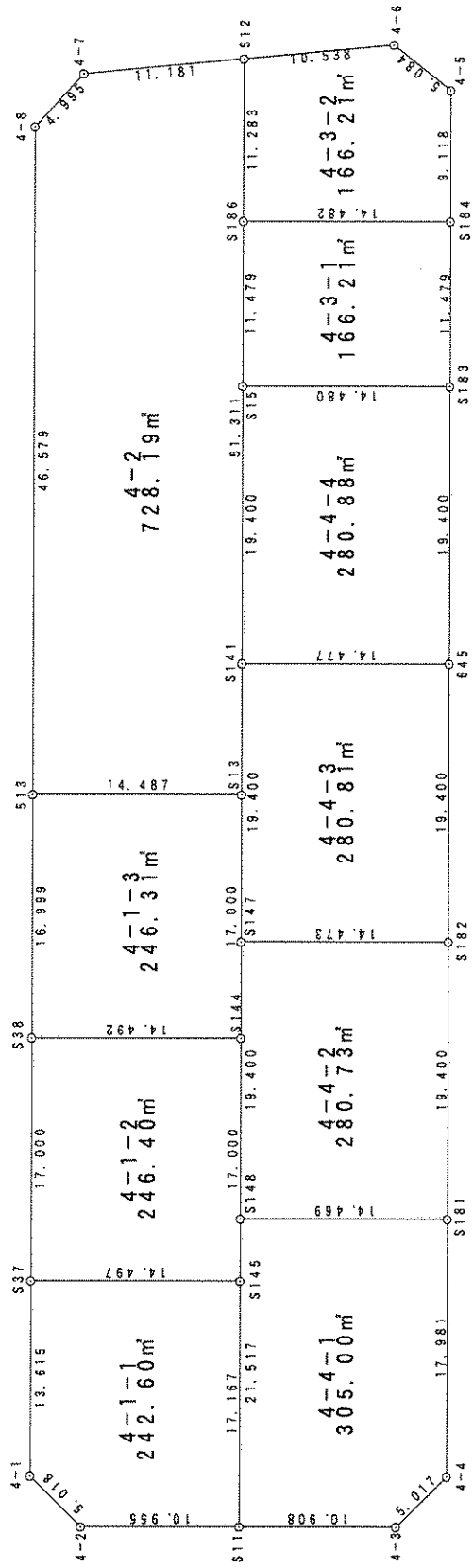
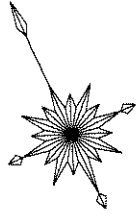
直角座標法面積計算書

3-2-4									
地番	点名	X	Y	距離	方向角	X _{n+1} - X _{n-1}	Y _{n+1} - Y _{n-1}	Y _n · (X _{n+1} - X _{n-1})	X _n · (Y _{n+1} - Y _{n-1})
	S178	-58971.035	-92221.244	9.476	295° 05' 05"	17.032	-3.876	-1570745.271810	228579.655203
	K28	-58967.018	-92229.827	1.355	290° 09' 49"	4.485	-9.855	-413619.864072	581096.121986
	K29	-58966.551	-92231.099	6.647	289° 58' 30"	2.738	-7.519	-252494.900562	443355.465096
	S176	-58964.280	-92237.346	14.715	199° 52' 37"	-11.568	-11.250	1067002.862657	663346.257275
	S738	-58978.119	-92242.349	17.438	109° 53' 09"	-19.770	11.395	1823630.431143	-672049.553451
	552	-58984.050	-92225.951	13.840	19° 52' 53"	7.083	21.105	-653268.565433	-1244832.638032
								倍面積	-504.691923
								面積	252.3459615
								地積	252.34

直角座標法面積計算書

地番	3-2-5												
点名	X	Y	距離	方向角	$X_{n+1} - X_n$	$Y_{n+1} - Y_n$	$Y_n \cdot (X_{n+1} - X_n)$	$X_n \cdot (Y_{n+1} - Y_n)$					
S178	-58971.035	-92221.244	13.840	199° 52' 53"	-4.502	-22.892	415173.651654	1349973.844562					
552	-58984.050	-92225.951	18.978	109° 51' 00"	-19.459	13.144	1794613.387801	-775267.843146					
K26	-58990.494	-92208.100	12.051	24° 43' 55"	4.502	22.892	-415114.479689	-1350419.300101					
K27	-58979.548	-92203.058	20.080	295° 05' 05"	19.459	-13.144	-1794167.932262	775208.671181					
							倍面積	-504.627504					
							面積	252.3137520					
							地積	252.31					

街區 原子一覽表 (4 街區)



直角座標法面積計算書

地番 4-1-1		X	Y	距離	方向角	$X_{n+1} - X_n$	$Y_{n+1} - Y_n$	$Y_n \cdot (X_{n+1} - X_n)$	$X_n \cdot (Y_{n+1} - Y_n)$
点名									
S37		-59029.033	-92364.982	13.615	205° 15' 49"	-6.129	-18.923	566139.158537	1116985.958146
4-1		-59041.346	-92370.793	5.018	160° 17' 22"	-17.036	-4.118	1573671.967851	243149.262507
4-2		-59046.070	-92369.100	10.955	115° 15' 20"	-9.398	11.600	868071.295587	-684955.423087
S11		-59050.744	-92359.192	17.167	25° 14' 51"	10.853	17.230	-1002385.646318	-1017462.949523
S145		-59035.217	-92351.870	14.497	295° 14' 51"	21.711	-5.790	-2005011.573831	341797.950132
						倍面積			
						面積			
						地積			
						242.6009125			
						242.60			

直角座標法面積計算書

地番 4-1-2		X	Y	距離	方向角	$X_{n+1} - X_n$	$Y_{n+1} - Y_n$	$Y_n \cdot (X_{n+1} - X_n)$	$X_n \cdot (Y_{n+1} - Y_n)$
点名									
S38		-59013.659	-92357.727	17.000	205° 15' 49"	-9.193	-20.363	849017.334048	1201697.203549
S37		-59029.033	-92364.982	14.497	115° 14' 51"	-21.557	5.857	1991145.242352	-345715.893633
S145		-59035.217	-92351.870	17.000	25° 14' 51"	9.193	20.363	-848963.495046	-1202136.176840
S144		-59019.841	-92344.619	14.492	295° 14' 51"	21.557	-5.857	-1990706.269062	345662.054632
						倍面積			
						面積			
						地積			
						246.4061460			
						246.40			

直角座標法面積計算書

4-1-3									
地番	X	Y	距離	方向角	$X_{n+1} - X_n$	$Y_{n+1} - Y_n$	$Y_n \cdot (X_{n+1} - X_n)$	$X_n \cdot (Y_{n+1} - Y_n)$	
点名									
513	-58998.286	-92350.472	16.999	205° 15' 49"	-9.195	-20.359	849138.385219	1201129.820655	
S38	-59013.659	-92357.727	14.492	115° 14' 51"	-21.555	5.853	1990735.385496	-345391.258261	
S144	-59019.841	-92344.619	17.000	25° 14' 51"	9.195	20.359	-849084.570863	-1201568.645144	
S13	-59004.464	-92337.368	14.487	295° 14' 40"	21.555	-5.853	-1990296.561006	345337.443905	
							倍面積	-492.638845	
							面積	246.3194225	
							地積	246.31	

直角座標法面積計算書

4-2									
地番	X	Y	距離	方向角	$X_{n+1} - X_n$	$Y_{n+1} - Y_n$	$Y_n \cdot (X_{n+1} - X_n)$	$X_n \cdot (Y_{n+1} - Y_n)$	
点名									
513	-58998.286	-92350.472	14.487	115° 14' 40"	-48.313	-6.751	4461773.373086	398321.178580	
S13	-59004.464	-92337.368	51.311	25° 14' 51"	40.231	34.990	-3714831.472890	-2064537.256424	
S12	-58958.055	-92315.482	11.181	289° 53' 08"	50.213	11.371	-4635418.671261	-670434.046013	
4-7	-58954.252	-92325.997	4.995	247° 39' 07"	1.904	-15.134	-175774.531105	892235.176887	
4-8	-58956.151	-92330.617	46.579	205° 13' 52"	-44.034	-24.475	4065707.691790	1442958.557350	
							倍面積	-1456.389620	
							面積	728.1948100	
							地積	728.19	

直角座標法面積計算書

4-3-1									
地番	X	Y	距離	方向角	$X_{n+1} - X_{n-1}$	$Y_{n+1} - Y_{n-1}$	$Y_n \cdot (X_{n+1} - X_{n-1})$	$X_n \cdot (Y_{n+1} - Y_{n-1})$	
S186	-58968.260	-92320.295	11.479	205° 14' 51"	-4.205	-17.994	388227.281357	1061089.830946	
S15	-58978.642	-92325.191	14.480	115° 14' 51"	-16.558	8.201	1528737.110598	-483665.317617	
S183	-58984.818	-92312.094	11.479	25° 15' 24"	4.205	17.994	-388192.795657	-1061387.783035	
S184	-58974.437	-92307.197	14.482	295° 14' 51"	16.558	-8.201	-1528439.158509	483630.831917	
							倍面積	-332.437789	
							面積	166.2188945	
							地積	166.21	

直角座標法面積計算書

4-3-2									
地番	X	Y	距離	方向角	$X_{n+1} - X_{n-1}$	$Y_{n+1} - Y_{n-1}$	$Y_n \cdot (X_{n+1} - X_{n-1})$	$X_n \cdot (Y_{n+1} - Y_{n-1})$	
S186	-58968.260	-92320.295	14.482	115° 14' 51"	-16.382	8.286	1512379.268992	-488601.115357	
S184	-58974.437	-92307.197	9.118	25° 15' 24"	2.070	16.989	-191061.227643	-1001907.672880	
4-5	-58966.190	-92303.306	5.084	333° 31' 27"	12.797	1.624	-1181238.504800	-95766.388196	
4-6	-58961.639	-92305.572	10.538	289° 53' 08"	8.135	-12.176	-750921.100565	717939.906588	
S12	-58958.055	-92315.482	11.283	205° 14' 51"	-6.620	-14.722	611173.995913	868002.837950	
							倍面積	-332.431895	
							面積	166.2159475	
							地積	166.21	

直角座標法面積計算書

地番 4-4-1		X	Y	距離	方向角	$X_{n+1} - X_n - 1$	$Y_{n+1} - Y_n - 1$	$Y_n \cdot (X_{n+1} - X_n - 1)$	$X_n \cdot (Y_{n+1} - Y_n - 1)$
点名									
S148		-59031.282	-92350.015	21.517	205° 14' 51"	-13.290	-22.265	1227330.201679	1314307.712380
S11		-59050.744	-92359.192	10.908	115° 15' 20"	-24.115	0.688	2227280.201361	-40601.838043
4-3		-59055.398	-92349.327	5.017	70° 24' 54"	-2.972	14.592	274484.686096	-861723.113453
4-4		-59053.716	-92344.601	17.981	25° 15' 32"	17.944	12.399	-1657020.855834	-732230.591498
S181		-59037.454	-92336.928	14.469	295° 14' 51"	22.434	-5.414	-2071464.213828	319637.811139
						倍面積			
						面積			
						地積			
						305.0097375			
						305.00			

直角座標法面積計算書

地番 4-4-2		X	Y	距離	方向角	$X_{n+1} - X_n - 1$	$Y_{n+1} - Y_n - 1$	$Y_n \cdot (X_{n+1} - X_n - 1)$	$X_n \cdot (Y_{n+1} - Y_n - 1)$
点名									
S147		-59013.735	-92341.740	19.400	205° 14' 51"	-11.374	-21.365	1050260.538248	1260834.716036
S148		-59031.282	-92350.015	14.469	115° 14' 51"	-23.718	4.812	2190386.766123	-284075.984141
S181		-59037.454	-92336.928	19.400	25° 15' 32"	11.374	21.365	-1050205.804991	-1261341.460357
S182		-59019.909	-92328.650	14.473	295° 14' 51"	23.718	-4.812	-2189880.021803	284021.250883
						倍面積			
						面積			
						地積			
						-561.477579			
						280.7387895			
						280.73			

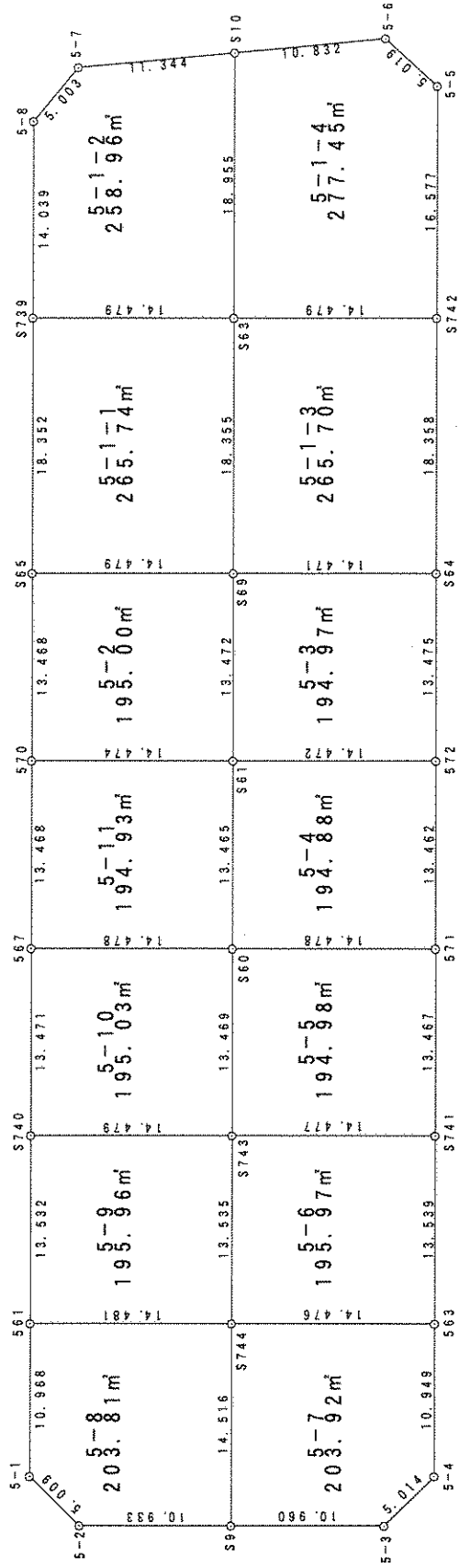
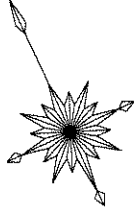
直角座標法面積計算書

4-4-3									
地番	X	Y	距離	方向角	$X_{n+1} - X_n$	$Y_{n+1} - Y_n$	$Y_n \cdot (X_{n+1} - X_n)$	$X_n \cdot (Y_{n+1} - Y_n)$	
S141	-58996.189	-92333.465	19.400	205° 14' 51"	-11.372	-21.368	1049979.022644	1260652.354201	
S147	-59013.735	-92341.740	14.473	115° 14' 51"	-23.720	4.816	2190351.461812	-284192.110570	
S182	-59019.909	-92328.650	19.400	25° 15' 32"	11.372	21.368	-1049924.260505	-1261159.213171	
645	-59002.364	-92320.372	14.477	295° 14' 59"	23.720	-4.816	-2189844.602842	284137.348432	
							倍面積	-561.621108	
							面積	280.8105540	
							地積	280.81	

直角座標法面積計算書

4-4-4									
地番	X	Y	距離	方向角	$X_{n+1} - X_n$	$Y_{n+1} - Y_n$	$Y_n \cdot (X_{n+1} - X_n)$	$X_n \cdot (Y_{n+1} - Y_n)$	
S141	-58996.189	-92333.465	14.477	115° 14' 59"	-23.722	4.819	2190331.984451	-284303.336331	
645	-59002.364	-92320.372	19.400	25° 15' 24"	11.371	21.371	-1049735.977081	-1260955.738806	
S183	-58984.818	-92312.094	14.480	295° 14' 51"	23.722	-4.819	-2189825.015642	284248.541380	
S15	-58978.642	-92325.191	19.400	205° 14' 51"	-11.371	-21.371	1049790.772032	1260448.769997	
							倍面積	-561.763760	
							面積	280.8818800	
							地積	280.88	

街區 原子一覽表 (5 街區)



直角座標法面積計算書

5-1-1									
地番	点名	X	Y	距離	方向角	$X_{n+1} - X_{n-1}$	$Y_{n+1} - Y_{n-1}$	$Y_n \cdot (X_{n+1} - X_{n-1})$	$X_n \cdot (Y_{n+1} - Y_{n-1})$
	S739	-58980.965	-92303.637	18.352	205° 14' 25"	-10.427	-20.923	962404.067721	1234063.322126
	S65	-58997.565	-92311.463	14.479	115° 14' 51"	-22.776	5.270	2102469.790855	-310943.912676
	S69	-59003.741	-92298.367	18.354	25° 14' 28"	10.427	20.923	-962349.115328	-1234539.862503
	S63	-58987.138	-92290.540	14.479	295° 14' 13"	22.776	-5.270	-2101993.250478	310888.960283
									倍面積
									面積
									地積
									-531.492770
									265.7463850
									265.74

直角座標法面積計算書

5-1-2									
地番	点名	X	Y	距離	方向角	$X_{n+1} - X_{n-1}$	$Y_{n+1} - Y_{n-1}$	$Y_n \cdot (X_{n+1} - X_{n-1})$	$X_n \cdot (Y_{n+1} - Y_{n-1})$
	5-8	-58968.266	-92297.651	14.039	205° 14' 25"	-14.829	-10.513	1368710.373105	619907.944343
	S739	-58980.965	-92303.637	14.479	115° 14' 13"	-18.872	7.111	1741969.956724	-419414.568277
	S63	-58987.138	-92290.540	18.955	25° 14' 28"	10.972	21.181	-1012616.175620	-1249380.624732
	S10	-58969.993	-92282.456	11.343	289° 52' 43"	21.003	-2.585	-1938189.102983	152431.443683
	5-7	-58966.136	-92293.124	5.002	244° 47' 30"	1.727	-15.194	-159357.117833	895937.871591
									倍面積
									面積
									地積
									-517.933392
									258.9666960
									258.96

直角座標法面積計算書

地番 5-1-3										
点名	X	Y	距離	方向角	$X_{n+1} - X_n$	$Y_{n+1} - Y_n$	$X_{n+1} - X_n$	$Y_{n+1} - Y_n$	$X_n \cdot (Y_{n+1} - Y_n)$	$Y_n \cdot (X_{n+1} - X_n)$
S63	-58987.138	-92290.540	18.354	205° 14' 28"	-10.429	-20.924	962511.852063	1234239.303930		
S69	-59003.741	-92298.367	14.470	115° 14' 51"	-22.775	5.261	2102049.733786	-310433.256125		
S64	-59009.913	-92285.278	18.357	25° 16' 00"	10.429	20.924	-962456.981730	-1234715.834774		
S742	-58993.312	-92277.443	14.478	295° 14' 13"	22.775	-5.261	-2101573.202942	310378.385792		
								倍面積	-531.401177	
								面積	265.7005885	
								地積	265.70	

直角座標法面積計算書

地番 5-1-4										
点名	X	Y	距離	方向角	$X_{n+1} - X_n$	$Y_{n+1} - Y_n$	$X_{n+1} - X_n$	$Y_{n+1} - Y_n$	$X_n \cdot (Y_{n+1} - Y_n)$	$Y_n \cdot (X_{n+1} - X_n)$
S10	-58969.993	-92282.456	18.955	205° 14' 28"	-13.462	-18.270	1242324.815534	1077384.306989		
S63	-58987.138	-92290.540	14.478	115° 14' 13"	-23.319	5.014	2152097.574036	-295747.639482		
S742	-58993.312	-92277.443	16.577	25° 16' 00"	8.818	20.172	-813694.365922	-1190040.909656		
5-5	-58978.321	-92270.367	5.018	337° 43' 29"	19.635	5.173	-1811764.986899	-305105.778098		
5-6	-58973.676	-92272.270	10.832	289° 52' 43"	8.328	-12.089	-768408.125672	712955.109170		
								倍面積	-554.911077	
								面積	277.455385	
								地積	277.45	

直角座標法面積計算書

地番	5-2		X	Y	距離	方向角	X _{n+1} - X _{n-1}	Y _{n+1} - Y _{n-1}	Y _n · (X _{n+1} - X _{n-1})	X _n · (Y _{n+1} - Y _{n-1})
点名	S65		-58997.565	-92311.463	13.468	205° 13' 11"	-6.009	-18.835	554667.570301	1111206.934898
	570		-59009.749	-92317.201	14.474	115° 15' 39"	-18.361	7.351	1695057.740565	-433803.066185
	S61		-59015.926	-92304.111	13.471	25° 14' 28"	6.009	18.835	-554623.398410	-1111552.764944
	S69		-59003.741	-92298.367	14.479	295° 14' 51"	18.361	-7.351	-1694711.910518	433758.894294
									倍面積	-390.001937
									面積	195.0009685
									地積	195.00

直角座標法面積計算書

地番	5-3		X	Y	距離	方向角	X _{n+1} - X _{n-1}	Y _{n+1} - Y _{n-1}	Y _n · (X _{n+1} - X _{n-1})	X _n · (Y _{n+1} - Y _{n-1})
点名	S69		-59003.741	-92298.367	13.471	205° 14' 28"	-6.013	-18.833	555011.292061	1111214.224334
	S61		-59015.926	-92304.111	14.471	115° 15' 39"	-18.361	7.343	1694806.041918	-433369.477634
	572		-59022.102	-92291.023	13.474	25° 14' 09"	6.013	18.833	-554967.135331	-1111560.018135
	S64		-59009.913	-92285.278	14.470	295° 14' 51"	18.361	-7.343	-1694460.248117	433325.320905
									倍面積	-389.950530
									面積	194.9752650
									地積	194.97

直角座標法面積計算書

地番	5-4												
点名	X	Y	距離	方向角	$X_{n+1} - X_n$	$Y_{n+1} - Y_n$	$X_{n+1} - X_n$	$Y_{n+1} - Y_n$	$Y_n \cdot (X_{n+1} - X_n)$	$X_n \cdot (Y_{n+1} - Y_n)$			
S61	-59015.926	-92304.111	13.464	205° 14' 28"	-6.003	-18.830	-6.003	-18.830	554146.508130	1111253.124527			
S60	-59028.105	-92309.853	14.478	115° 14' 57"	-18.355	7.353	-18.355	1694345.021152	-434044.162458				
S71	-59034.281	-92296.758	13.461	25° 12' 51"	6.003	18.830	6.003	-554102.363424	-1111598.743487				
S72	-59022.102	-92291.023	14.471	295° 15' 39"	18.355	-7.353	18.355	-1693999.402191	434000.017752				
								倍面積		-389.763666			
								面積		194.8818330			
								地積		194.88			

直角座標法面積計算書

地番	5-5												
点名	X	Y	距離	方向角	$X_{n+1} - X_n$	$Y_{n+1} - Y_n$	$X_{n+1} - X_n$	$Y_{n+1} - Y_n$	$Y_n \cdot (X_{n+1} - X_n)$	$X_n \cdot (Y_{n+1} - Y_n)$			
S60	-59028.105	-92309.853	13.469	205° 14' 28"	-6.008	-18.839	-6.008	-18.839	554554.813485	1112009.640764			
S743	-59040.289	-92315.597	14.477	115° 14' 28"	-18.357	7.351	-18.357	1694612.050489	-434011.491124				
S741	-59046.462	-92302.502	13.467	25° 14' 45"	6.008	18.839	6.008	-554510.651440	-1112355.456632				
S71	-59034.281	-92296.758	14.478	295° 14' 57"	18.357	-7.351	18.357	-1694266.234621	433967.329079				
								倍面積		-389.977913			
								面積		194.9889565			
								地積		194.98			

直角座標法面積計算書

地番	5-6												
点名	X	Y	距離	方向角	$X_{n+1} - X_n$	$Y_{n+1} - Y_n$	$X_{n+1} - X_n$	$Y_{n+1} - Y_n$	$Y_n \cdot (X_{n+1} - X_n)$	$X_n \cdot (Y_{n+1} - Y_n)$			
S741	-59046.462	-92302.502	14.477	295° 14' 28"	18.419	-7.320	18.419	-7.320	-1700130.325375	432246.230159			
S743	-59040.289	-92315.597	13.535	205° 14' 28"	-6.070	-18.867	-6.070	-18.867	560322.588337	1113894.256885			
S744	-59052.532	-92321.369	14.475	115° 15' 17"	-18.419	7.320	-18.419	7.320	1700477.832916	-432290.662622			
563	-59058.708	-92308.276	13.538	25° 14' 45"	6.070	18.867	6.070	18.867	-560278.155875	-1114241.764426			
									倍面積	-391.940004			
									面積	195.9700020			
									地積	195.97			

直角座標法面積計算書

地番	5-7												
点名	X	Y	距離	方向角	$X_{n+1} - X_n$	$Y_{n+1} - Y_n$	$X_{n+1} - X_n$	$Y_{n+1} - Y_n$	$Y_n \cdot (X_{n+1} - X_n)$	$X_n \cdot (Y_{n+1} - Y_n)$			
S744	-59052.532	-92321.369	14.516	205° 14' 28"	-6.954	-19.283	-6.954	-19.283	642038.602428	1138682.409275			
S9	-59065.662	-92327.559	10.959	115° 16' 49"	-17.811	3.720	-17.811	3.720	1644428.778062	-219727.936059			
5-3	-59070.343	-92317.649	5.014	69° 48' 48"	-2.950	14.616	-2.950	14.616	272348.615697	-863391.364112			
5-4	-59068.612	-92312.943	10.948	25° 13' 34"	11.635	9.372	11.635	9.372	-1074038.850481	-553605.955905			
563	-59058.708	-92308.276	14.475	295° 15' 17"	16.081	-8.426	16.081	-8.426	-1484369.299982	497635.001077			
									倍面積	-407.845724			
									面積	203.9228620			
									地積	203.92			

直角座標法面積計算書

地番	点名	X	Y	距離	方向角	$X_{n+1} - X_{n-1}$	$Y_{n+1} - Y_{n-1}$	$Y_n \cdot (X_{n+1} - X_{n-1})$	$X_n \cdot (Y_{n+1} - Y_{n-1})$
5-8	561	-59046.354	-92334.465	10.967	205° 11' 53"	-3.746	-17.766	345892.664588	1049027.084187
	5-1	-59056.278	-92339.135	5.009	160° 16' 56"	-14.640	-2.980	1351813.549860	175958.969803
	5-2	-59060.993	-92337.445	10.932	115° 16' 49"	-9.384	11.576	866527.501732	-683686.721183
	S9	-59065.662	-92327.559	14.516	25° 14' 28"	8.462	16.076	-781237.874550	-949545.888405
	S744	-59052.532	-92321.369	14.480	295° 15' 17"	19.309	-6.906	-1782588.205287	407838.919255
								倍面積	-407.636343
								面積	203.8181715
								地積	203.81

直角座標法面積計算書

地番	点名	X	Y	距離	方向角	$X_{n+1} - X_{n-1}$	$Y_{n+1} - Y_{n-1}$	$Y_n \cdot (X_{n+1} - X_{n-1})$	$X_n \cdot (Y_{n+1} - Y_{n-1})$
5-9	S740	-59034.114	-92328.694	13.531	205° 14' 47"	-6.065	-18.868	559972.656346	1113883.156458
	561	-59046.354	-92334.465	14.480	115° 15' 17"	-18.417	7.325	1700567.491019	-432516.817713
	S744	-59052.532	-92321.369	13.535	25° 14' 28"	6.065	18.868	-559928.230056	-1114230.665909
	S743	-59040.289	-92315.597	14.479	295° 14' 28"	18.417	-7.325	-1700219.981568	432472.391424
								倍面積	-391.935740
								面積	195.9678700
								地積	195.96

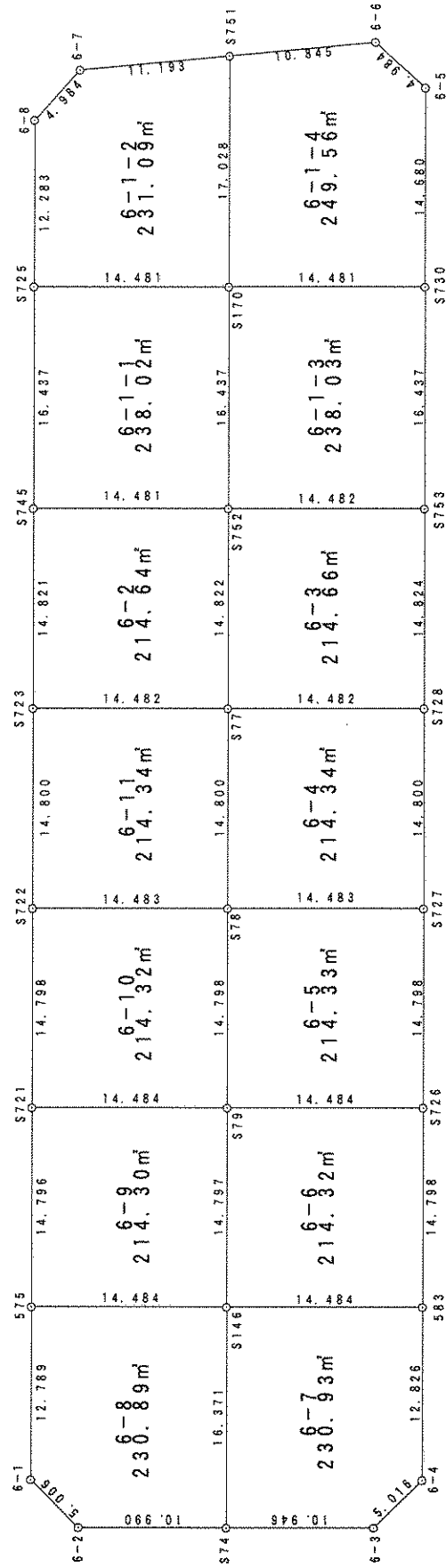
直角座標法面積計算書

地番	5-10												
点名	X	Y	距離	方向角	$X_{n+1} - X_{n-1}$	$Y_{n+1} - Y_{n-1}$	$X_{n+1} - X_{n-1}$	$Y_{n+1} - Y_{n-1}$	$Y_n \cdot (X_{n+1} - X_{n-1})$	$X_n \cdot (Y_{n+1} - Y_{n-1})$			
S60	-59028.105	-92309.853	14.478	295° 14' 58"	18.359	-7.351	-1694723.839271	433925.424945					
S67	-59021.930	-92322.948	13.471	205° 14' 47"	-6.009	-18.841	554758.829639	1112009.260914					
S740	-59034.114	-92328.694	14.479	115° 14' 28"	-18.359	7.351	1695069.735542	-433969.597327					
S743	-59040.289	-92315.597	13.469	25° 14' 28"	6.009	18.841	-554714.657258	-1112355.157185					
							倍面積	-390.068653					
							面積	195.0343265					
							地積	195.03					

直角座標法面積計算書

地番	5-11												
点名	X	Y	距離	方向角	$X_{n+1} - X_{n-1}$	$Y_{n+1} - Y_{n-1}$	$X_{n+1} - X_{n-1}$	$Y_{n+1} - Y_{n-1}$	$Y_n \cdot (X_{n+1} - X_{n-1})$	$X_n \cdot (Y_{n+1} - Y_{n-1})$			
S61	-59015.926	-92304.111	14.474	295° 15' 39"	18.356	-7.348	-1694329.151638	433669.118051					
S70	-59009.749	-92317.201	13.467	205° 15' 27"	-6.003	-18.837	554220.110634	1111545.139014					
S67	-59021.930	-92322.948	14.478	115° 14' 58"	-18.356	7.348	1694674.915875	-433713.233319					
S60	-59028.105	-92309.853	13.464	25° 14' 28"	6.003	18.837	-554175.995366	-1111890.903251					
							倍面積	-389.879505					
							面積	194.9397525					
							地積	194.93					

街區 原子一覽表 (6 街区)



直角座標法面積計算書

地番	6-1-1											
点名	X	Y	距離	方向角	$X_{n+1} - X_n$	$Y_{n+1} - Y_n$	$Y_n \cdot (X_{n+1} - X_n)$	$X_n \cdot (Y_{n+1} - Y_n)$				
S725	-58991.172	-92269.793	16.437	205° 14' 44"	-8.693	-20.109	802064.822088	1186233.101466				
S745	-59006.039	-92276.803	14.481	115° 14' 17"	-21.041	6.089	1941641.924204	-359277.941637				
S752	-59012.214	-92263.704	16.437	25° 14' 34"	8.693	20.109	-802011.894267	-1186656.217624				
S170	-58997.347	-92256.695	14.481	295° 14' 17"	21.041	-6.089	-1941218.808045	359225.013816				
							倍面積	-476.043979				
							面積	238.0219895				
							地積	238.02				

直角座標法面積計算書

地番	6-1-2											
点名	X	Y	距離	方向角	$X_{n+1} - X_n$	$Y_{n+1} - Y_n$	$Y_n \cdot (X_{n+1} - X_n)$	$X_n \cdot (Y_{n+1} - Y_n)$				
6-7	-58978.137	-92259.958	4.984	247° 15' 51"	1.882	-15.121	-173664.918458	891826.115583				
6-8	-58980.063	-92264.554	12.283	205° 14' 44"	-13.036	-9.835	1202733.066179	580067.288906				
S725	-58991.172	-92269.793	14.481	115° 14' 17"	-17.284	7.860	1594781.449715	-463659.661064				
S170	-58997.347	-92256.695	17.028	25° 14' 34"	9.227	20.360	-851277.682012	-1201178.774149				
S751	-58981.945	-92249.433	11.193	289° 53' 33"	19.210	-3.263	-1772109.715885	192482.831186				
							倍面積	-462.199538				
							面積	231.0997690				
							地積	231.09				

直角座標法面積計算書

6-1-3									
地番	点名	X	Y	距離	方向角	$X_{n+1} - X_n$	$Y_{n+1} - Y_n$	$Y_n \cdot (X_{n+1} - X_n)$	$X_n \cdot (Y_{n+1} - Y_n)$
	S170	-58997.347	-92256.695	16.437	205° 14' 34"	-8.693	-20.108	801957.883094	1186347.909573
	S752	-59012.214	-92263.704	14.482	115° 14' 21"	-21.042	6.090	1941439.753218	-359374.974093
	S753	-59018.389	-92250.605	16.437	25° 14' 26"	8.693	20.108	-801904.946061	-1186771.038406
	S730	-59003.521	-92243.596	14.481	295° 14' 17"	21.042	-6.090	-1941016.624385	359322.037060
								倍面積	-476.065866
								面積	238.0329330
								地積	238.03

直角座標法面積計算書

6-1-4									
地番	点名	X	Y	距離	方向角	$X_{n+1} - X_n$	$Y_{n+1} - Y_n$	$Y_n \cdot (X_{n+1} - X_n)$	$X_n \cdot (Y_{n+1} - Y_n)$
	S751	-58981.945	-92249.433	17.028	205° 14' 34"	-11.711	-17.460	1080360.385130	1029813.907898
	S170	-58997.347	-92256.695	14.481	115° 14' 17"	-21.576	5.837	1990538.606964	-344394.149240
	S730	-59003.521	-92243.596	14.680	25° 14' 26"	7.104	19.359	-655260.863739	-1142227.793889
	6-5	-58990.243	-92237.336	4.984	337° 36' 13"	17.886	4.361	-1649741.505261	-257249.283323
	6-6	-58985.635	-92239.235	10.845	289° 53' 33"	8.298	-12.097	-765397.488796	713558.184256
								倍面積	-499.134298
								面積	249.5671490
								地積	249.56

直角座標法面積計算書

地番	6-2		X	Y	距離	方向角	$X_{n+1} - X_n - 1$	$Y_{n+1} - Y_n - 1$	$Y_n \cdot (X_{n+1} - X_n - 1)$	$X_n \cdot (Y_{n+1} - Y_n - 1)$
点名										
S745			-59006.039	-92276.803	14.821	205° 14' 44"	-7.231	-19.420	667207.617339	1145902.112058
S723			-59019.444	-92283.124	14.482	115° 14' 41"	-19.582	6.778	1807044.800714	-400035.840711
S77			-59025.621	-92270.025	14.822	25° 14' 34"	7.231	19.420	-667158.608745	-1146282.386980
S752			-59012.214	-92263.704	14.481	295° 14' 17"	19.582	-6.778	-1806664.525792	399986.832117
									倍面積	-429.283516
									面積	214.6417580
									地積	214.64

直角座標法面積計算書

地番	6-3		X	Y	距離	方向角	$X_{n+1} - X_n - 1$	$Y_{n+1} - Y_n - 1$	$Y_n \cdot (X_{n+1} - X_n - 1)$	$X_n \cdot (Y_{n+1} - Y_n - 1)$
点名										
S752			-59012.214	-92263.704	14.822	205° 14' 34"	-7.232	-19.420	667236.666841	1146044.359599
S77			-59025.621	-92270.025	14.482	115° 14' 41"	-19.583	6.778	1806968.812620	-400092.155833
S728			-59031.797	-92256.926	14.824	25° 14' 26"	7.232	19.420	-667187.647384	-1146424.679926
S753			-59018.389	-92250.605	14.482	295° 14' 21"	19.583	-6.778	-1806588.492293	400043.136377
									倍面積	-429.339783
									面積	214.6698915
									地積	214.66

直角座標法面積計算書

地番	6-4							
点名	X	Y	距離	方向角	$X_{n+1} - X_n$	$Y_{n+1} - Y_n$	$Y_n \cdot (X_{n+1} - X_n)$	$X_n \cdot (Y_{n+1} - Y_n)$
S77	-59025.621	-92270.025	14.800	205° 14' 34"	-7.210	-19.411	665293.784754	1145743.041662
S78	-59039.008	-92276.337	14.483	115° 14' 41"	-19.564	6.788	1805264.329556	-400772.388716
S727	-59045.185	-92263.237	14.800	25° 14' 26"	7.210	19.411	-665244.839389	-1146122.791082
S728	-59031.797	-92256.926	14.482	295° 14' 41"	19.564	-6.788	-1804884.580135	400723.443351
							倍面積	-428.694785
							面積	214.3473925
							地積	214.34

直角座標法面積計算書

地番	6-5							
点名	X	Y	距離	方向角	$X_{n+1} - X_n$	$Y_{n+1} - Y_n$	$Y_n \cdot (X_{n+1} - X_n)$	$X_n \cdot (Y_{n+1} - Y_n)$
S78	-59039.008	-92276.337	14.798	205° 14' 34"	-7.208	-19.411	665171.196757	1145990.228574
S79	-59052.393	-92282.648	14.484	115° 14' 41"	-19.562	6.790	1805265.552045	-400938.178564
S726	-59058.570	-92269.547	14.798	25° 14' 26"	7.208	19.411	-665122.254612	-1146369.948086
S727	-59045.185	-92263.237	14.483	295° 14' 41"	19.562	-6.790	-1804885.832534	400889.236419
							倍面積	-428.661657
							面積	214.3308285
							地積	214.33

直角座標法面積計算書

地番	6-6												
点名	X	Y	距離	方向角	$X_{n+1} - X_n$	$Y_{n+1} - Y_n$	$Y_n \cdot (X_{n+1} - X_n)$	$X_n \cdot (Y_{n+1} - Y_n)$					
S79	-59052.393	-92282.648	14.797	205° 14' 34"	-7.207	-19.411	665071.387633	1146244.255741					
S146	-59065.777	-92288.958	14.484	115° 15' 01"	-19.563	6.790	1805404.547582	-401062.411386					
583	-59071.956	-92275.858	14.798	25° 14' 26"	7.207	19.411	-665022.452107	-1146623.976605					
S726	-59058.570	-92269.547	14.484	295° 14' 41"	19.563	-6.790	-1805024.826718	401013.475861					
							倍面積	-428.656389					
							面積	214.3281945					
							地積	214.32					

直角座標法面積計算書

地番	6-7												
点名	X	Y	距離	方向角	$X_{n+1} - X_n$	$Y_{n+1} - Y_n$	$Y_n \cdot (X_{n+1} - X_n)$	$X_n \cdot (Y_{n+1} - Y_n)$					
S146	-59065.777	-92288.958	16.371	205° 14' 34"	-8.629	-20.082	796342.033363	1186139.288663					
S74	-59080.584	-92295.939	10.946	115° 17' 14"	-19.483	2.916	1798213.126696	-172281.934401					
6-3	-59085.260	-92286.042	5.016	70° 10' 25"	-2.974	14.617	274489.940535	-863620.325179					
6-4	-59083.559	-92281.323	12.826	25° 13' 15"	13.305	10.184	-1227762.718563	-601723.784485					
583	-59071.956	-92275.858	14.484	295° 15' 01"	17.782	-7.635	-1640820.508416	451024.881788					
							倍面積	-461.873614					
							面積	230.9368070					
							地積	230.93					

直角座標法面積計算書

地番	6-8							
点名	X	Y	距離	方向角	$X_{n+1} - X_n$	$Y_{n+1} - Y_n$	$Y_n \cdot (X_{n+1} - X_n) - Y_{n-1} \cdot X_n$	$X_n \cdot (Y_{n+1} - Y_n) - Y_{n-1} \cdot X_{n-1}$
575	-59059.598	-92302.058	12.789	205° 17' 27"	-5.385	-18.564	497021.982463	1096383.061552
6-1	-59071.162	-92307.522	5.006	160° 48' 26"	-16.292	-3.818	1503829.015389	225522.064363
6-2	-59075.890	-92305.876	10.990	115° 17' 14"	-9.423	11.583	869762.813086	-684257.052948
S74	-59080.584	-92295.939	16.371	25° 14' 34"	10.113	16.918	-933384.374210	-999533.465423
S146	-59065.777	-92288.958	14.484	295° 15' 01"	20.986	-6.119	-1936767.647887	361423.603615
							倍面積	-461.788841
							面積	230.8944205
							地積	230.89

直角座標法面積計算書

地番	6-9							
点名	X	Y	距離	方向角	$X_{n+1} - X_n$	$Y_{n+1} - Y_n$	$Y_n \cdot (X_{n+1} - X_n) - Y_{n-1} \cdot X_n$	$X_n \cdot (Y_{n+1} - Y_n) - Y_{n-1} \cdot X_{n-1}$
S721	-59046.216	-92295.748	14.796	205° 14' 44"	-7.205	-19.411	665027.858102	1146120.791195
575	-59059.598	-92302.058	14.484	115° 15' 01"	-19.561	6.790	1805518.230808	-401017.726160
S146	-59065.777	-92288.958	14.797	25° 14' 34"	7.205	19.411	-664978.933058	-1146500.480892
S79	-59052.393	-92282.648	14.484	295° 14' 41"	19.561	-6.790	-1805138.541112	400968.801116
							倍面積	-428.614741
							面積	214.3073705
							地積	214.30

直角座標法面積計算書

6-10									
地番	点名	X	Y	距離	方向角	$X_{n+1} - X_n$	$Y_{n+1} - Y_n$	$Y_n \cdot (X_{n+1} - X_n)$	$X_n \cdot (Y_{n+1} - Y_n)$
	S722	-59032.831	-92289.437	14.798	205° 14' 44"	-7.208	-19.411	665247.334028	1145895.157331
	S721	-59046.216	-92295.748	14.484	115° 14' 41"	-19.562	6.789	1805489.604964	-400852.514456
	S79	-59052.393	-92282.648	14.798	25° 14' 34"	7.208	19.411	-665198.398566	-1146274.878292
	S78	-59039.008	-92276.337	14.483	295° 14' 41"	19.562	-6.789	-1805109.884002	400803.578994
倍面積									-428.656423
面積									214.3282115
地積									214.32

直角座標法面積計算書

6-11									
地番	点名	X	Y	距離	方向角	$X_{n+1} - X_n$	$Y_{n+1} - Y_n$	$Y_n \cdot (X_{n+1} - X_n)$	$X_n \cdot (Y_{n+1} - Y_n)$
	S723	-59019.444	-92283.124	14.800	205° 14' 44"	-7.210	-19.411	665374.580561	1145641.671048
	S722	-59032.831	-92289.437	14.483	115° 14' 41"	-19.563	6.787	1805483.736433	-400680.439402
	S78	-59039.008	-92276.337	14.800	25° 14' 34"	7.210	19.411	-665325.642310	-1146021.418852
	S77	-59025.621	-92270.025	14.482	295° 14' 41"	19.563	-6.787	-1805103.988629	400631.501151
倍面積									-428.686055
面積									214.3430275
地積									214.34

直角座標法面積計算書

地番	7-1		X	Y	距離	方向角	$X_{n+1} - X_n - 1$	$Y_{n+1} - Y_n - 1$	$Y_n \cdot (X_{n+1} - X_n - 1)$	$X_n \cdot (Y_{n+1} - Y_n - 1)$
点名	S84		-59077.023	-92370.426	15.555	295° 14' 40"	19.874	-7.822	-1835764.353722	462108.858681
	S18		-59070.389	-92384.495	11.111	205° 16' 18"	-3.414	-18.812	315358.833100	1111244.965104
	7-1		-59080.436	-92389.238	5.024	159° 53' 36"	-14.765	-3.016	1364163.891875	178187.816172
	73		-59085.154	-92387.511	11.982	115° 14' 12"	-9.827	12.565	907862.596128	-742426.705710
	508		-59090.263	-92376.673	14.640	25° 15' 30"	8.132	17.085	-751178.080797	-1009557.820830
									倍面積	-442.886583
									面積	221.4432915
									地積	221.44

直角座標法面積計算書

地番	7-2		X	Y	距離	方向角	$X_{n+1} - X_n - 1$	$Y_{n+1} - Y_n - 1$	$Y_n \cdot (X_{n+1} - X_n - 1)$	$X_n \cdot (Y_{n+1} - Y_n - 1)$
点名	S18		-59070.389	-92384.495	15.555	115° 14' 40"	-23.816	5.958	2200194.696751	-351915.059795
	S84		-59077.023	-92370.426	22.552	25° 15' 30"	13.762	23.692	-1271193.698452	-1399641.880350
	509		-59056.627	-92360.803	12.022	295° 15' 20"	25.525	-1.250	-2357491.000729	73810.338516
	7-7		-59051.498	-92371.676	5.008	250° 02' 46"	3.420	-15.580	-315911.372237	920044.684271
	7-8		-59053.207	-92376.383	19.000	205° 16' 18"	-18.891	-12.819	1745090.327450	757012.964576
									倍面積	-688.952782
									面積	344.4763910
									地積	344.47

直角座標法面積計算書

7-3-1									
地番	点名	X	Y	距離	方向角	$X_{n+1} - X_n$	$Y_{n+1} - Y_n$	$Y_n \cdot (X_{n+1} - X_n)$	$X_n \cdot (Y_{n+1} - Y_n)$
	S44	-59098.456	-92358.922	15.535	25° 14' 40"	13.510	7.936	-1247792.548376	-469002.392025
	S43	-59084.405	-92352.297	19.545	295° 14' 40"	22.387	-11.053	-2067471.478068	653085.496079
	S85	-59076.069	-92369.976	15.694	205° 15' 30"	-5.858	-24.375	541107.964192	1440004.774410
	508	-59090.263	-92376.673	16.137	115° 17' 40"	-21.089	7.893	1948102.696653	-466406.034902
	K18	-59097.158	-92362.083	1.999	112° 15' 57"	-7.652	16.439	706773.519173	-971526.729940
	K19	-59097.915	-92360.233	1.418	112° 25' 17"	-1.298	3.160	119893.128970	-186768.396166
									倍面積
									306.6412720
									地積
									306.64

直角座標法面積計算書

7-3-2									
地番	点名	X	Y	距離	方向角	$X_{n+1} - X_n$	$Y_{n+1} - Y_n$	$Y_n \cdot (X_{n+1} - X_n)$	$X_n \cdot (Y_{n+1} - Y_n)$
	S21	-59081.854	-92357.706	21.497	25° 14' 40"	13.658	21.438	-1261455.324981	-1266587.874075
	S80	-59062.411	-92348.538	13.560	295° 14' 49"	25.227	-3.097	-2329719.916644	182912.242899
	509	-59056.627	-92360.803	21.497	205° 15' 30"	-13.658	-21.438	1261497.624005	1266047.051395
	S85	-59076.069	-92369.976	13.565	115° 14' 40"	-25.227	3.097	2330260.739324	-182954.541922
									倍面積
									-583.121703
									面積
									291.5608515
									地積
									291.56

直角座標法面積計算書

地番		7-4-1											
点名	X	Y	距離	方向角	$X_{n+1} - X_n$	$Y_{n+1} - Y_n$	$Y_n \cdot (X_{n+1} - X_n)$	$X_n \cdot (Y_{n+1} - Y_n)$	$X_{n+1} \cdot Y_n - X_n \cdot Y_{n+1}$	$X_n \cdot (Y_{n+1} - Y_n)$	$Y_n \cdot (X_{n+1} - X_n)$	$X_{n+1} \cdot Y_n - X_n \cdot Y_{n+1}$	
S43	-59084.405	-92352.297	15.535	205° 14' 40"	-5.133	-25.539	474021.223724	1508985.631954					
S44	-59098.456	-92358.922	20.937	112° 25' 17"	-22.037	12.729	2035284.304481	-752249.451448					
S98	-59106.441	-92339.568	14.504	25° 14' 40"	5.133	25.539	-473955.890238	-1509548.437627					
S104	-59093.323	-92333.383	20.911	295° 14' 40"	22.037	-12.729	-2034721.498808	752184.117962					
								倍面積		-628.139159			
								面積		314.0695795			
								地積		314.06			

直角座標法面積計算書

地番		7-4-2											
点名	X	Y	距離	方向角	$X_{n+1} - X_n$	$Y_{n+1} - Y_n$	$Y_n \cdot (X_{n+1} - X_n)$	$X_n \cdot (Y_{n+1} - Y_n)$	$X_{n+1} \cdot Y_n - X_n \cdot Y_{n+1}$	$X_n \cdot (Y_{n+1} - Y_n)$	$Y_n \cdot (X_{n+1} - X_n)$	$X_{n+1} \cdot Y_n - X_n \cdot Y_{n+1}$	
S23	-59087.639	-92345.439	21.496	25° 14' 40"	13.659	21.435	-1261353.748290	-1266542.753801					
S81	-59068.195	-92336.271	13.563	295° 14' 49"	25.228	-3.099	-2329452.978336	183067.409558					
S80	-59062.411	-92348.538	21.497	205° 14' 40"	-13.659	-21.435	1261396.081265	1266001.993455					
S21	-59081.854	-92357.706	13.563	115° 14' 40"	-25.228	3.099	2329993.738683	-183109.742533					
								倍面積		-583.093321			
								面積		291.5466605			
								地積		291.54			

直角座標法面積計算書

地番 7-4-3		X	Y	距離	方向角	$X_{n+1} - X_n$	$Y_{n+1} - Y_n$	$Y_n \cdot (X_{n+1} - X_n)$	$X_n \cdot (Y_{n+1} - Y_n)$
点名									
	S81	-59068.195	-92336.271	21.496	205° 14' 40"	-13.758	-21.223	1270386.285201	1253623.347004
	S23	-59087.639	-92345.439	13.329	115° 14' 40"	-25.128	2.888	2320430.444094	-170649.616476
	S104	-59093.323	-92333.383	21.496	25° 14' 40"	13.758	21.223	-1270346.550299	-1254156.640731
	S99	-59073.880	-92324.215	13.329	295° 14' 49"	25.128	-2.888	-2319897.150367	170609.881574
								倍面積	-573.028629
								面積	286.5143145
								地積	286.51

直角座標法面積計算書

地番 7-5		X	Y	距離	方向角	$X_{n+1} - X_n$	$Y_{n+1} - Y_n$	$Y_n \cdot (X_{n+1} - X_n)$	$X_n \cdot (Y_{n+1} - Y_n)$
点名									
	S99	-59073.880	-92324.215	16.000	205° 14' 40"	-8.596	-19.285	793593.942214	1139262.746706
	S103	-59088.352	-92331.039	13.778	115° 14' 40"	-20.348	5.638	1878759.334068	-333140.486057
	S27	-59094.228	-92318.577	16.000	25° 14' 40"	8.596	19.285	-793545.479442	-1139655.167331
	S83	-59079.757	-92311.754	13.778	295° 14' 49"	20.348	-5.638	-1878366.913443	333092.023285
								倍面積	-440.883397
								面積	220.4416985
								地積	220.44

直角座標法面積計算書

地番	7-6							
点名	X	Y	距離	方向角	$X_{n+1} - X_n$	$Y_{n+1} - Y_n$	$Y_n \cdot (X_{n+1} - X_n)$	$X_n \cdot (Y_{n+1} - Y_n)$
S55	-59100.198	-92305.916	15.999	25° 14' 55"	8.501	19.486	-784650.792359	-1151618.378321
S55	-59085.728	-92299.092	14.000	295° 14' 49"	20.442	-5.838	-1886751.411645	344939.658858
S83	-59079.757	-92311.754	16.000	205° 14' 40"	-8.501	-19.486	784700.418147	1151220.053926
S27	-59094.228	-92318.577	13.998	115° 14' 40"	-20.442	5.838	1887149.736039	-344989.284647
							倍面積	-447.950184
							面積	223.9750920
							地積	223.97

直角座標法面積計算書

地番	7-7							
点名	X	Y	距離	方向角	$X_{n+1} - X_n$	$Y_{n+1} - Y_n$	$Y_n \cdot (X_{n+1} - X_n)$	$X_n \cdot (Y_{n+1} - Y_n)$
S55	-59085.728	-92299.092	15.999	205° 14' 55"	-9.523	-17.330	878954.552038	1023948.837264
S55	-59100.198	-92305.916	15.144	115° 14' 40"	-20.929	6.874	1931910.859678	-406238.609918
S24	-59106.657	-92292.218	12.450	25° 12' 53"	4.805	19.002	-443491.883992	-1123151.703806
7-5	-59095.393	-92286.914	5.005	340° 28' 56"	15.982	3.632	-1474903.028773	-214623.468474
7-6	-59090.676	-92288.586	11.612	295° 13' 07"	9.665	-12.178	-891998.477859	719592.923842
							倍面積	-472.021092
							面積	236.0105460
							地積	236.01

直角座標法面積計算書

地番	7-8		X	Y	距離	方向角	$X_{n+1} - X_n$	$Y_{n+1} - Y_n$	$Y_n \cdot (X_{n+1} - X_n)$	$X_n \cdot (Y_{n+1} - Y_n)$
点名	S55	-59100.198	-92305.916	18.629	205° 14' 40"	-10.391	-21.643	959174.977982	1279111.695943	
	S46	-59117.049	-92313.861	11.748	112° 25' 17"	-21.331	2.915	1969135.976290	-172306.048703	
	K19-1	-59121.529	-92303.001	5.001	68° 22' 03"	-2.637	15.508	243427.645086	-916870.296364	
	7-4	-59119.686	-92298.353	14.401	25° 12' 53"	14.872	10.783	-1372666.845756	-637511.894605	
	S24	-59106.657	-92292.218	15.144	295° 14' 40"	19.487	-7.563	-1798530.546378	447035.336505	
								倍面積	-541.207224	
								面積	270.6036120	
								地積	270.60	

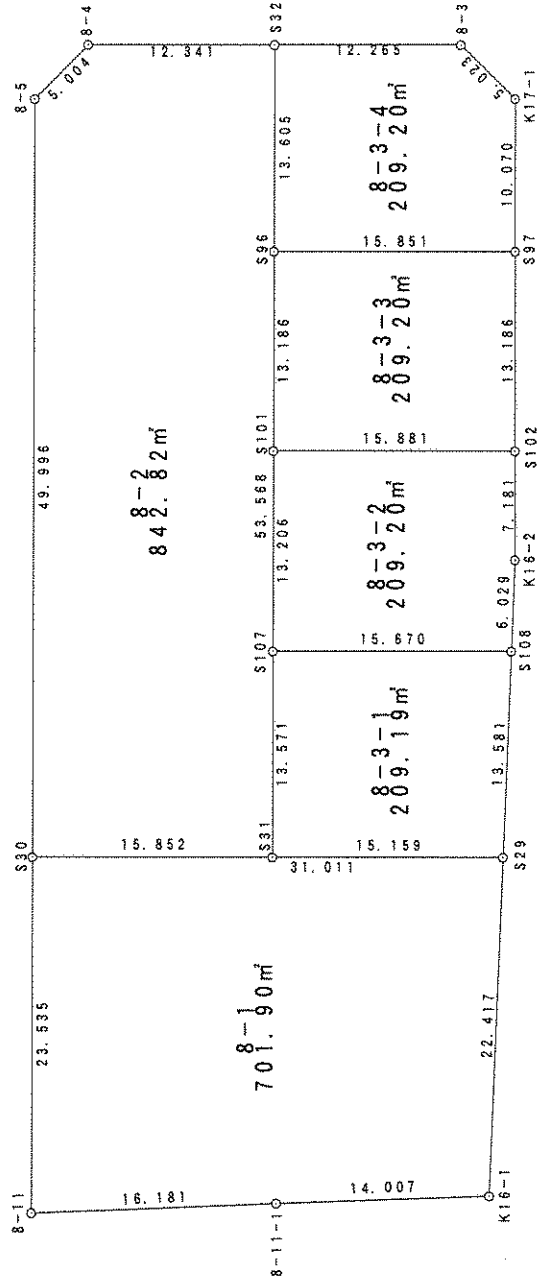
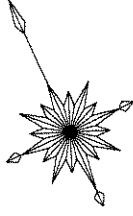
直角座標法面積計算書

地番	7-9		X	Y	距離	方向角	$X_{n+1} - X_n$	$Y_{n+1} - Y_n$	$Y_n \cdot (X_{n+1} - X_n)$	$X_n \cdot (Y_{n+1} - Y_n)$
点名	S27	-59094.228	-92318.577	19.320	205° 14' 40"	-11.504	-20.901	1062066.481497	1235125.087360	
	S25	-59111.703	-92326.817	14.015	112° 25' 17"	-22.820	4.716	2106912.007997	-278799.552473	
	S46	-59117.049	-92313.861	18.629	25° 14' 40"	11.504	20.901	-1062012.221321	-1235602.050055	
	S55	-59100.198	-92305.916	13.998	295° 14' 40"	22.820	-4.716	-2106435.045302	278745.292296	
								倍面積	-531.222872	
								面積	265.6114360	
								地積	265.61	

直角座標法面積計算書

地番	7-10		X	Y	距離	方向角	$X_{n+1} - X_n$	$Y_{n+1} - Y_n$	$Y_n \cdot (X_{n+1} - X_n)$	$X_n \cdot (Y_{n+1} - Y_n)$
点名										
S103			-59088.352	-92331.039	19.999	205° 14' 40"	-12.213	-20.991	1127641.762898	1240323.211218
S98			-59106.441	-92339.568	13.794	112° 25' 17"	-23.350	4.222	2156160.885054	-249570.932895
S25			-59111.703	-92326.817	19.320	25° 14' 40"	12.213	20.991	-1127590.194622	-1240813.358178
S27			-59094.228	-92318.577	13.778	295° 14' 40"	23.350	-4.222	-2155670.738094	249519.364618
									倍面積	-541.715237
									面積	270.8576185
									地積	270.85

街區 原子一覽表 (8 街區)



直角座標法面積計算書

地番	8-1		X	Y	距離	方向角	$X_{n+1} - X_n$	$Y_{n+1} - Y_n$	$Y_n \cdot (X_{n+1} - X_n)$	$X_n \cdot (Y_{n+1} - Y_n)$
点名	S29		-59150.749	-92388.087	31.011	295° 14' 38"	33.127	-17.732	-3060555.097465	1048861.896827
	S30		-59137.524	-92416.136	23.535	205° 14' 38"	-8.062	-38.086	745050.961473	2252314.275535
	8-11		-59158.811	-92426.173	16.181	112° 59' 40"	-27.608	4.858	2551692.754092	-287401.281368
	8-11-1		-59165.132	-92411.278	14.007	113° 12' 20"	-11.840	27.769	1094158.075872	-1642946.011539
	K16-1		-59170.651	-92398.404	22.417	27° 24' 08"	14.383	23.191	-1328942.892862	-1372232.680564
									倍面積	-1403.801109
									面積	701.9005545
									地積	701.90

直角座標法面積計算書

地番	8-2		X	Y	距離	方向角	$X_{n+1} - X_n$	$Y_{n+1} - Y_n$	$Y_n \cdot (X_{n+1} - X_n)$	$X_n \cdot (Y_{n+1} - Y_n)$
点名	S31		-59144.284	-92401.798	53.568	25° 14' 38"	41.692	37.183	-3852386.839506	-2199161.531218
	S32		-59095.832	-92378.953	12.341	295° 12' 56"	53.709	11.680	-4961620.265223	-690259.227022
	8-4		-59090.575	-92390.118	5.004	249° 48' 01"	3.529	-15.861	-326081.667726	937256.086943
	8-5		-59092.303	-92394.815	49.996	205° 14' 38"	-46.949	-26.018	4337853.296132	1537481.828798
	S30		-59137.524	-92416.136	15.852	115° 14' 38"	-51.981	-6.984	4803921.124630	412997.194192
									倍面積	-1685.648307
									面積	842.8241535
									地積	842.82

直角座標法面積計算書

8-3-1									
地番	点名	X	Y	距離	方向角	X _{n+1} - X _{n-1}	Y _{n+1} - Y _{n-1}	Y _n · (X _{n+1} - X _{n-1})	X _n · (Y _{n+1} - Y _{n-1})
	S108	-59138.692	-92381.837	15.670	295° 14' 38"	18.740	-7.924	-1731219.965625	468592.864812
	S107	-59132.009	-92396.011	13.571	205° 14' 38"	-5.592	-19.962	516681.133592	1180366.600374
	S31	-59144.284	-92401.798	15.159	115° 14' 38"	-18.740	7.924	1731594.041705	-468637.173954
	S29	-59150.749	-92388.087	13.581	27° 24' 08"	5.592	19.962	-516636.824450	-1180740.676454
倍面積									-418.385222
面積									209.1926110
地積									209.19

直角座標法面積計算書

8-3-2									
地番	点名	X	Y	距離	方向角	X _{n+1} - X _{n-1}	Y _{n+1} - Y _{n-1}	Y _n · (X _{n+1} - X _{n-1})	X _n · (Y _{n+1} - Y _{n-1})
	S107	-59132.009	-92396.011	15.670	115° 14' 38"	-18.628	8.542	1721141.714082	-505100.623716
	S108	-59138.692	-92381.837	6.029	27° 24' 08"	-1.330	16.949	122901.542389	-1002324.600230
	K16-2	-59133.339	-92379.062	7.181	25° 06' 43"	11.855	5.822	-1095164.475746	-344300.314192
	S102	-59126.837	-92376.014	15.881	295° 14' 38"	13.275	-11.317	-1226316.815256	669121.385592
	S101	-59120.064	-92390.379	13.206	205° 14' 38"	-5.172	-19.996	477856.434536	1182185.752541
倍面積									-418.400005
面積									209.2000025
地積									209.20

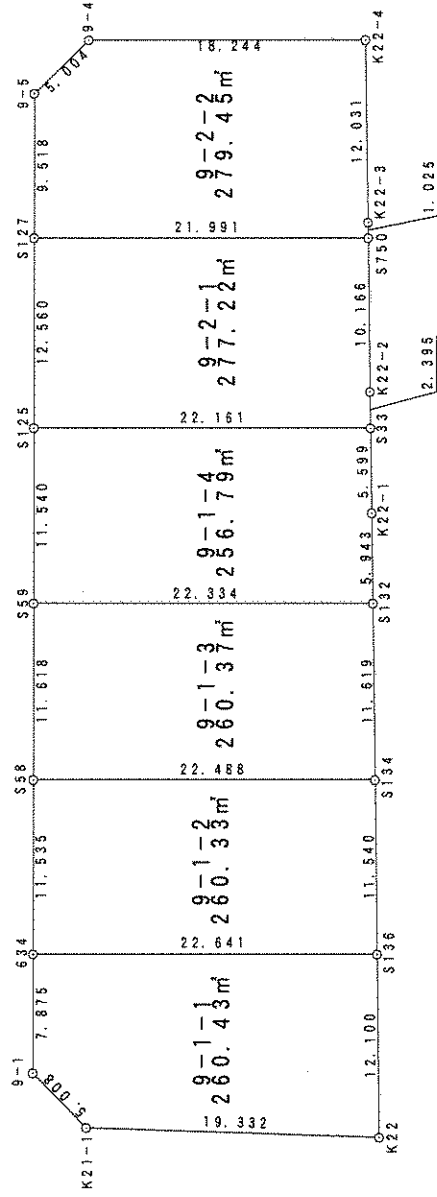
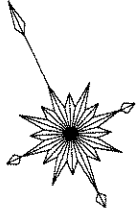
直角座標法面積計算書

8-3-3									
地番	点名	X	Y	距離	方向角	$X_{n+1} - X_n$	$Y_{n+1} - Y_n$	$Y_n \cdot (X_{n+1} - X_n)$	$X_n \cdot (Y_{n+1} - Y_n)$
	S101	-59120.064	-92390.379	15.881	115° 14' 38"	-18.699	8.741	1727622.609807	-516773.433968
	S102	-59126.837	-92376.014	13.186	25° 06' 43"	5.167	19.960	-477268.021300	-1180181.897296
	S97	-59114.897	-92370.418	15.851	295° 14' 38"	18.699	-8.741	-1727249.371307	516728.272463
	S96	-59108.138	-92384.755	13.186	205° 14' 38"	-5.167	-19.960	477313.182804	1179808.658795
						倍面積			
						面積			
						地積			
						-418.400006			
						209.2000030			
						209.20			

直角座標法面積計算書

8-3-4									
地番	点名	X	Y	距離	方向角	$X_{n+1} - X_n$	$Y_{n+1} - Y_n$	$Y_n \cdot (X_{n+1} - X_n)$	$X_n \cdot (Y_{n+1} - Y_n)$
	S96	-59108.138	-92384.755	15.851	115° 14' 38"	-19.066	8.535	1761363.732300	-504475.400139
	S97	-59114.897	-92370.418	10.070	25° 06' 43"	2.359	18.611	-217869.619694	-1100164.425317
	K17-1	-59105.779	-92366.145	5.023	340° 04' 07"	13.840	2.562	-1278376.875803	-151399.514305
	8-3	-59101.057	-92367.857	12.265	295° 12' 56"	9.947	-12.808	-918788.011121	756995.783412
	S32	-59095.832	-92378.953	13.605	205° 14' 38"	-7.080	-16.898	654089.174319	998625.156346
						倍面積			
						面積			
						地積			
						-418.400003			
						209.2000015			
						209.20			

街區 原子一覽表 (9 街區)



直角座標法面積計算書

地番	9-1-1		X	Y	距離	方向角	X _{n+1} - X _{n-1}	Y _{n+1} - Y _{n-1}	Y _n · (X _{n+1} - X _{n-1})	X _n · (Y _{n+1} - Y _{n-1})
点名	S136	634	-59125.026	-92269.196	22.641	295° 14' 49"	20.670	-15.465	-1907192.894243	914397.591577
			-59115.369	-92289.675	7.875	205° 16' 00"	2.535	-23.840	-233993.020746	1409299.816514
			-59122.490	-92293.036	5.008	161° 09' 13"	-11.861	-1.743	1094716.179091	103079.223136
			-59127.230	-92291.418	19.332	117° 06' 22"	-13.548	18.827	1250391.600345	-1113176.476934
			-59136.039	-92274.209	12.100	24° 28' 29"	2.204	22.222	-203400.994584	-1314121.024157
									倍面積	-520.869864
									面積	260.4349320
									地積	260.43

直角座標法面積計算書

地番	9-1-2		X	Y	距離	方向角	X _{n+1} - X _{n-1}	Y _{n+1} - Y _{n-1}	Y _n · (X _{n+1} - X _{n-1})	X _n · (Y _{n+1} - Y _{n-1})
点名	634	S136	-59115.369	-92289.675	22.641	115° 14' 49"	-20.092	15.561	1854238.889181	-919881.418942
			-59125.026	-92269.196	11.540	24° 28' 29"	0.846	25.259	-78048.332438	-1493461.732013
			-59114.523	-92264.415	22.488	295° 14' 18"	20.092	-15.561	-1853731.390022	919868.256444
			-59104.934	-92284.757	11.535	205° 14' 03"	-0.846	-25.259	78061.494936	1492954.232854
									倍面積	-520.661657
									面積	260.3308285
									地積	260.33

直角座標法面積計算書

地番 9-1-3									
点名	X	Y	距離	方向角	$X_{n+1} - X_n$	$Y_{n+1} - Y_n$	$Y_n \cdot (X_{n+1} - X_n)$	$X_n \cdot (Y_{n+1} - Y_n)$	$X_n \cdot (Y_{n+1} - Y_n) - Y_n \cdot (X_{n+1} - X_n)$
S58	-59104.934	-92284.757	22.488	115° 14' 18"	-20.098	15.389	1854751.713933	-909540.984034	
S134	-59114.523	-92264.415	11.619	24° 28' 29"	0.987	25.155	-91021.533336	-1487051.206535	
S132	-59103.948	-92259.601	22.334	295° 14' 18"	20.098	-15.389	-1854246.136659	909525.802752	
S59	-59094.425	-92279.804	11.618	205° 14' 03"	-0.987	-25.155	91036.714618	1486545.629261	
							倍面積	-520.758556	
							面積	260.3792780	
							地積	260.37	

直角座標法面積計算書

地番 9-1-4									
点名	X	Y	距離	方向角	$X_{n+1} - X_n$	$Y_{n+1} - Y_n$	$Y_n \cdot (X_{n+1} - X_n)$	$X_n \cdot (Y_{n+1} - Y_n)$	$X_n \cdot (Y_{n+1} - Y_n) - Y_n \cdot (X_{n+1} - X_n)$
S59	-59094.425	-92279.804	22.334	115° 14' 18"	-19.962	15.283	1842065.231357	-903117.665313	
S132	-59103.948	-92259.601	5.943	24° 28' 29"	-4.114	22.664	379584.200292	-1339553.233842	
K22-1	-59098.539	-92257.139	5.599	24° 15' 55"	10.513	4.763	-969873.566918	-281476.968480	
S33	-59093.435	-92254.839	22.161	295° 14' 18"	14.553	-17.745	-1342591.140939	1048590.911222	
S125	-59083.986	-92274.884	11.540	205° 14' 03"	-0.990	-24.965	91328.872618	1475043.360002	
							倍面積	-513.596411	
							面積	256.7982055	
							地積	256.79	

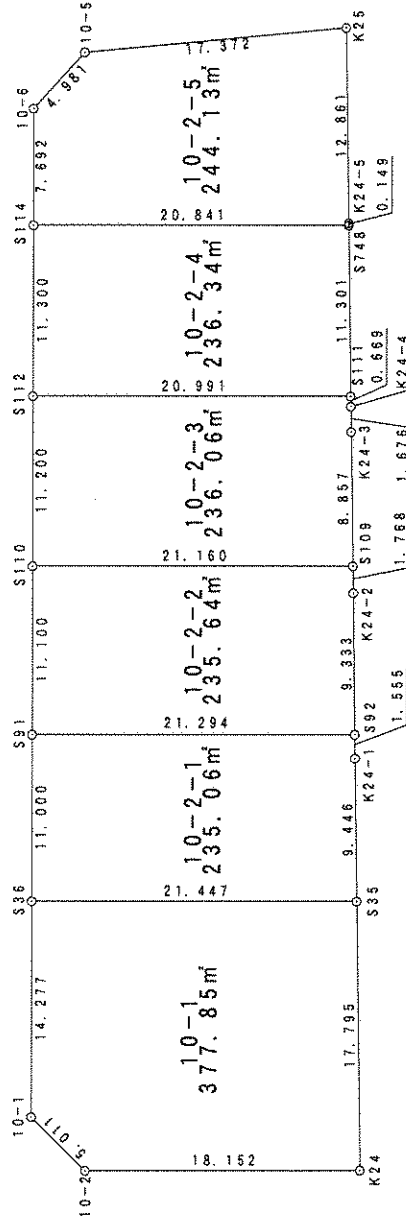
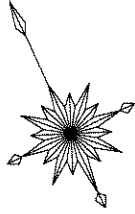
直角座標法面積計算書

地番	9-2-1		X	Y	距離	方向角	X _{n+1} - X _{n-1}	Y _{n+1} - Y _{n-1}	Y _n · (X _{n+1} - X _{n-1})	X _n · (Y _{n+1} - Y _{n-1})
点名										
S750			-59082.001	-92249.637	21.991	295° 14' 18"	18.627	-15.675	-1718305.557182	926127.101131
S127			-59072.624	-92269.529	12.560	205° 14' 03"	-1.985	-25.247	183140.386284	1491384.987476
S125			-59083.986	-92274.884	22.161	115° 14' 18"	-20.811	14.691	1920290.151269	-867993.101199
S33			-59093.435	-92254.839	2.395	24° 15' 55"	-7.265	21.030	670246.947212	-1242729.613003
K22-2			-59091.251	-92253.854	10.166	24° 30' 23"	11.434	5.201	-1054817.475034	-307343.826954
									倍面積	-554.452549
									面積	277.2262745
									地積	277.22

直角座標法面積計算書

地番	9-2-2		X	Y	距離	方向角	X _{n+1} - X _{n-1}	Y _{n+1} - Y _{n-1}	Y _n · (X _{n+1} - X _{n-1})	X _n · (Y _{n+1} - Y _{n-1})
点名										
S127			-59072.624	-92269.529	21.991	115° 14' 18"	-17.987	15.834	1659632.246969	-935362.507464
S750			-59082.001	-92249.637	1.025	24° 30' 23"	-8.444	20.317	778953.999596	-1200380.345163
K22-3			-59081.068	-92249.212	12.031	24° 20' 42"	11.894	5.385	-1097210.241529	-318135.572070
K22-4			-59070.107	-92244.253	18.244	295° 13' 00"	18.734	-11.546	-1728089.258235	681998.217291
9-4			-59062.335	-92260.758	5.004	250° 23' 10"	6.093	-21.219	-562126.909403	1253234.272026
9-5			-59064.014	-92265.472	9.518	205° 14' 03"	-10.290	-8.772	949399.066148	518087.031835
									倍面積	-558.903545
									面積	279.4517725
									地積	279.45

街區 原子一覽表 (10 街區)



直角座標法面積計算書

地番	X	Y	距離	方向角	X _{n+1} - X _{n-1}	Y _{n+1} - Y _{n-1}	Y _n · (X _{n+1} - X _{n-1})	X _n · (Y _{n+1} - Y _{n-1})
10-1								
点名								
S35	-59048.437	-92234.414	21.447	295° 14' 24"	25.348	-12.042	-2337948.346331	711072.683542
S36	-59039.291	-92253.813	14.277	205° 14' 24"	-3.769	-25.487	347660.452574	1504758.259091
10-1	-59052.205	-92259.901	5.011	160° 08' 28"	-17.627	-4.386	1626221.572916	258984.686861
10-2	-59056.918	-92258.199	18.152	115° 10' 27"	-12.434	18.130	1147142.531596	-1070703.911320
K24	-59064.639	-92241.771	17.795	24° 25' 20"	8.481	23.785	-782320.501095	-1404867.427834
							倍面積	-755.709660
							面積	377.8548300
							地積	377.85

直角座標法面積計算書

地番	X	Y	距離	方向角	X _{n+1} - X _{n-1}	Y _{n+1} - Y _{n-1}	Y _n · (X _{n+1} - X _{n-1})	X _n · (Y _{n+1} - Y _{n-1})
10-2-1								
点名								
S92	-59038.422	-92229.862	21.294	295° 14' 24"	10.494	-18.615	-967876.148861	1098977.398489
S91	-59029.342	-92249.123	11.000	205° 14' 24"	-0.870	-23.952	80236.109979	1413859.820349
S36	-59039.291	-92253.813	21.447	115° 14' 24"	-19.095	14.709	1761607.702777	-868408.234853
S35	-59048.437	-92234.414	9.446	24° 25' 20"	-0.544	23.305	50200.874022	-1376134.958833
K24-1	-59039.836	-92230.508	1.555	24° 34' 26"	10.015	4.552	-923698.417915	-268764.145154
							倍面積	-470.120002
							面積	235.0600010
							地積	235.06

直角座標法面積計算書

地番	10-2-2		X	Y	距離	方向角	X _{n+1} - X _{n-1}	Y _{n+1} - Y _{n-1}	Y _n · (X _{n+1} - X _{n-1})	X _n · (Y _{n+1} - Y _{n-1})
点名			X	Y	距離	方向角	X _{n+1} - X _{n-1}	Y _{n+1} - Y _{n-1}	Y _n · (X _{n+1} - X _{n-1})	X _n · (Y _{n+1} - Y _{n-1})
S91	-59029.342	-92249.123	21.294	115° 14' 24"	-19.120	14.528	1763831.909219	-857584.117455		
S92	-59038.422	-92229.862	9.333	24° 34' 26"	-0.592	23.143	54624.048377	-1366303.608760		
K24-2	-59029.934	-92225.980	1.768	24° 24' 18"	10.097	4.612	-931246.818344	-272227.407020		
S109	-59028.324	-92225.250	21.160	295° 14' 24"	10.632	-18.409	-980580.247717	1086680.605069		
S110	-59019.301	-92244.390	11.100	205° 14' 24"	-1.017	-23.873	93842.394624	1408963.242007		
							倍面積		-471.286159	
							面積		235.6430795	
							地積		235.64	

直角座標法面積計算書

地番	10-2-3		X	Y	距離	方向角	X _{n+1} - X _{n-1}	Y _{n+1} - Y _{n-1}	Y _n · (X _{n+1} - X _{n-1})	X _n · (Y _{n+1} - Y _{n-1})
点名			X	Y	距離	方向角	X _{n+1} - X _{n-1}	Y _{n+1} - Y _{n-1}	Y _n · (X _{n+1} - X _{n-1})	X _n · (Y _{n+1} - Y _{n-1})
S111	-59018.121	-92220.627	20.991	295° 14' 24"	9.559	-18.709	-881554.811378	1104194.983892		
S112	-59009.171	-92239.614	11.200	205° 14' 24"	-1.180	-23.762	108852.697050	1402196.069437		
S110	-59019.301	-92244.390	21.160	115° 14' 24"	-19.154	14.364	1766811.063565	-847751.095966		
S109	-59028.324	-92225.250	8.857	24° 24' 18"	-0.957	22.799	88297.798485	-1345802.504591		
K24-3	-59020.259	-92221.590	1.676	24° 09' 50"	9.594	4.345	-884810.358200	-256470.127470		
K24-4	-59018.730	-92220.904	0.669	24° 28' 51"	2.138	0.963	-197124.255991	-56839.458833		
							倍面積		-472.133531	
							面積		236.0667655	
							地積		236.06	

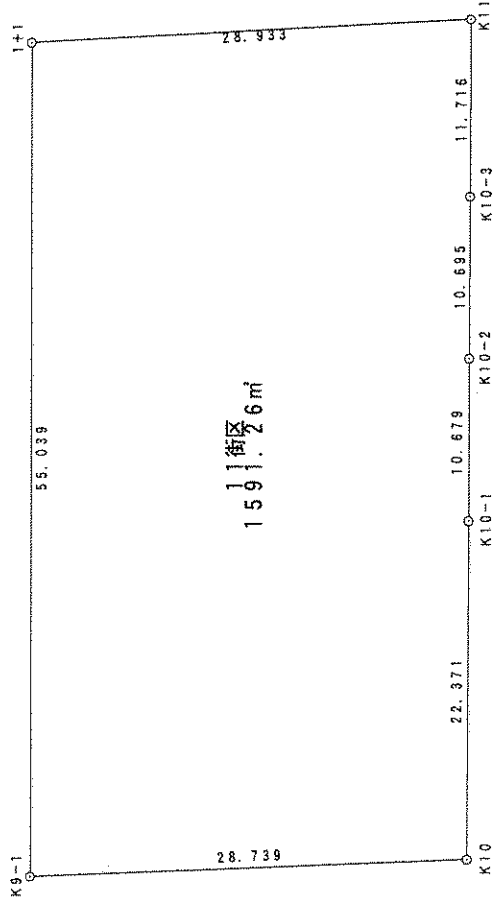
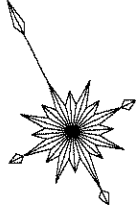
直角座標法面積計算書

地番 10-2-4									
点名	X	Y	距離	方向角	X _{n+1} - X _{n-1}	Y _{n+1} - Y _{n-1}	Y _n · (X _{n+1} - X _{n-1})	X _n · (Y _{n+1} - Y _{n-1})	
S748	-59007.836	-92215.944	20.841	295° 14' 24"	19.172	-14.168	-1767944.812268	836026.646185	
S114	-58998.949	-92234.795	11.300	205° 14' 24"	-1.334	-23.670	123079.681961	1396477.260845	
S112	-59009.171	-92239.614	20.991	115° 14' 24"	-19.172	14.168	1768398.599504	-836045.552288	
S111	-59018.121	-92220.627	11.301	24° 28' 51"	1.334	23.670	-123060.775858	-1396931.048081	
								倍面積	-472.693339
								面積	236.3466695
								地積	236.34

直角座標法面積計算書

地番 10-2-5									
点名	X	Y	距離	方向角	X _{n+1} - X _{n-1}	Y _{n+1} - Y _{n-1}	Y _n · (X _{n+1} - X _{n-1})	X _n · (Y _{n+1} - Y _{n-1})	
S114	-58998.949	-92234.795	20.841	115° 14' 24"	-15.845	15.571	1461427.568463	-918671.718007	
S748	-59007.836	-92215.944	0.149	24° 28' 51"	-8.751	18.913	806977.615705	-1116009.377645	
K24-5	-59007.700	-92215.883	12.861	24° 21' 56"	11.852	5.368	-1092914.072751	-316749.191226	
K25	-58995.984	-92210.576	17.372	289° 51' 47"	17.618	-11.032	-1624602.078037	650858.101587	
10-5	-58990.082	-92226.915	4.981	247° 27' 30"	3.993	-20.939	-368257.878759	1235188.260226	
10-6	-58991.992	-92231.515	7.692	205° 14' 24"	-8.867	-7.881	817857.111338	464895.659106	
								倍面積	-488.265959
								面積	244.1329795
								地積	244.13

街區地 原子一覽表 (1 1 街區)



直角座標法面積計算書

11街区									
地番	X	Y	距離	方向角	$X_{n+1} - X_n$	$Y_{n+1} - Y_n$	$X_n \cdot (X_{n+1} - X_n)$	$Y_n \cdot (Y_{n+1} - Y_n)$	$X_n \cdot (Y_{n+1} - Y_n) - Y_n \cdot (X_{n+1} - X_n)$
K9-1	-59192.123	-92495.436	28.739	114° 12' 22"	-61.048	1.670	5646624.969454	-98852.602826	
K10	-59203.906	-92469.224	22.371	26° 39' 55"	8.208	36.251	-758960.549557	-2146226.869330	
K10-1	-59183.915	-92459.184	10.679	26° 37' 38"	29.538	14.826	-2731050.409143	-877437.568096	
K10-2	-59174.368	-92454.398	10.695	26° 42' 19"	19.101	9.593	-1765947.486270	-567634.486323	
K10-3	-59164.814	-92449.592	11.716	26° 38' 49"	20.026	10.061	-1851357.452663	-595241.021749	
K11	-59154.343	-92444.337	28.933	293° 23' 09"	21.956	-21.302	-2029668.596847	1260102.284569	
I+1	-59142.859	-92470.894	55.039	206° 28' 53"	-37.780	-51.098	3493542.060204	3022107.728577	
							倍面積		-3182.535178
							面積		1591.2675890
							地積		1591.26