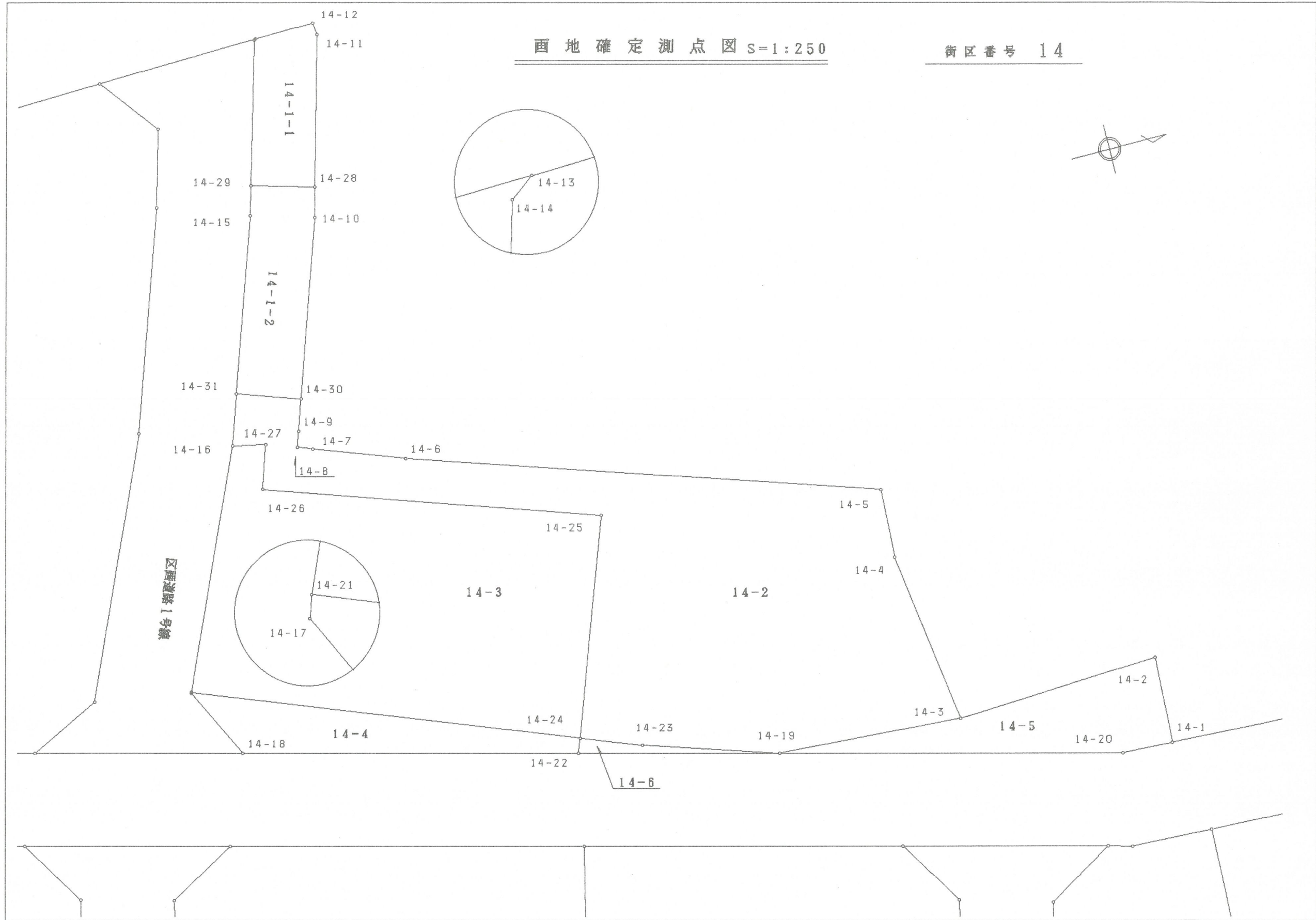


B - 14

画地确定测点图 S=1:250

街区番号 14



画地面積成果表

街区番号	画地番号	面 積 <small>m²</small>	摘 要	街区番号	画地番号	面 積 <small>m²</small>	摘 要
B-14	1-1	40.00					
	1-2	55.20					
	2	419.91					
	3	344.22					
	4	53.47	保留地				
	5	67.13	"				
	6	5.10	"				
計		985.03					

※ ※ 面積計算 (座標法) ※ ※ ワーク名: B14

地 器械点	番 : 視準点	14-1-1 内角	方向角	距離	[1] X(i)	[2] Y(i)	[3] X(i+1)-X(i-1)	[2]*[3]
14-28	14-11	89-18-39	284-50-46	9.745	-62687.496	-88175.393	6.436	-567496.829348
14-11	14-12	159-01-14	263-52-00	0.796	-62684.999	-88184.813	2.412	-212701.768956
14-12	14-13	94-25-50	178-17-50	3.803	-62685.084	-88185.604	-3.886	342689.257144
14-13	14-14	143-57-22	142-15-12	0.078	-62688.885	-88185.491	-3.863	340660.551733
14-14	14-29	143-16-25	105-31-37	9.294	-62688.947	-88185.443	-2.550	224872.879650
14-29	14-28	90-00-30	15-32-07	4.088	-62691.435	-88176.488	1.451	-127944.084088
							倍面積	80.006135
							面積	40.0030675

地 器械点	番 : 視準点	14-1-2 内角	方向角	距離	[1] X(i)	[2] Y(i)	[3] X(i+1)-X(i-1)	[2]*[3]
14-30	14-10	89-57-40	288-37-46	11.651	-62691.704	-88162.520	7.620	-671798.402400
14-10	14-28	176-13-41	284-51-27	1.895	-62687.982	-88173.561	4.208	-371034.344688
14-28	14-29	90-40-40	195-32-07	4.088	-62687.496	-88175.393	-3.453	304469.632029
14-29	14-15	89-59-20	105-31-27	1.849	-62691.435	-88176.488	-4.434	390974.547792
14-15	14-31	183-08-35	108-40-02	11.473	-62691.930	-88174.706	-4.167	367423.999902
14-31	14-30	90-00-04	18-40-06	4.114	-62695.602	-88163.837	0.226	-19925.027162
							倍面積	110.405473
							面積	55.2027365

地 器械点	番 : 視準点	14-2 内角	方向角	距離	[1] X(i)	[2] Y(i)	[3] X(i+1)-X(i-1)	[2]*[3]
14-31	14-16	90-00-06	108-40-12	3.314	-62695.602	-88163.837	-4.959	437204.467683
14-16	14-27	82-57-04	11-37-16	2.095	-62696.663	-88160.697	0.991	-87367.250727
14-27	14-26	276-27-05	108-04-21	2.850	-62694.611	-88160.275	1.168	-102971.201200
14-26	14-25	90-35-04	18-39-25	21.710	-62695.495	-88157.566	19.685	-1735381.686710
14-25	14-24	271-08-08	109-47-33	14.308	-62674.926	-88150.621	15.724	-1386080.364604
14-24	14-23	90-57-46	20-45-19	4.007	-62679.771	-88137.158	-1.098	96774.599484
14-23	14-19	176-50-13	17-35-32	8.751	-62676.024	-88135.738	12.089	-1065472.936682
14-19	14-3	165-45-14	3-20-46	11.753	-62667.682	-88133.093	20.075	-1769271.841975
14-3	14-4	78-50-35	262-11-21	11.037	-62655.949	-88132.407	10.233	-901858.920831
14-4	14-5	190-45-35	272-56-56	4.471	-62657.449	-88143.342	-1.270	111942.044340
14-5	14-6	105-05-13	198-02-09	30.377	-62657.219	-88147.807	-28.654	2525787.261778
14-6	14-7	181-54-32	199-56-41	6.013	-62686.103	-88157.212	-34.536	3044597.473632
14-7	14-8	180-01-25	199-58-06	0.993	-62691.755	-88159.263	-6.585	580528.746855
14-8	14-9	268-39-50	288-37-56	1.011	-62692.688	-88159.602	-0.610	53777.357220
14-9	14-30	180-00-15	288-38-11	2.068	-62692.365	-88160.560	0.984	-86749.991040
14-30	14-31	90-01-55	198-40-06	4.114	-62691.704	-88162.520	-3.237	285382.077240
							倍面積	839.834463
							面積	419.9172315

* * 境 界 点 成 果 表 * *

测点名	X 座 标	Y 座 标	测点名	X 座 标	Y 座 标
14-1	-62643.243	-88127.564	14-17	-62703.089	-88146.045
14-2	-62642.950	-88133.072	14-18	-62700.877	-88141.551
14-3	-62655.949	-88132.407	14-19	-62667.682	-88133.093
14-4	-62657.449	-88143.342	14-20	-62646.459	-88127.688
14-5	-62657.219	-88147.807	14-21	-62703.070	-88146.103
14-6	-62686.103	-88157.212	14-22	-62680.102	-88136.265
14-7	-62691.755	-88159.263	14-23	-62676.024	-88135.738
14-8	-62692.688	-88159.602	14-24	-62679.771	-88137.158
14-9	-62692.365	-88160.560	14-25	-62674.926	-88150.621
14-10	-62687.982	-88173.561	14-26	-62695.495	-88157.566
14-11	-62684.999	-88184.813	14-27	-62694.611	-88160.275
14-12	-62685.084	-88185.604	14-28	-62687.496	-88175.393
14-13	-62688.885	-88185.491	14-29	-62691.435	-88176.488
14-14	-62688.947	-88185.443	14-30	-62691.704	-88162.520
14-15	-62691.930	-88174.706	14-31	-62695.602	-88163.837
14-16	-62696.663	-88160.697			

地 器械点	番 : 14-3 視準点	内角	方向角	距離	[1] X(i)	[2] Y(i)	[3] X(i+1)-X(i-1)	[2]*[3]
14-16	14-21	102-04-52	113-42-08	15.938	-62696.663	-88160.697	-8.459	745751.335923
14-21	14-24	87-18-02	21-00-10	24.957	-62703.070	-88146.103	16.892	-1488963.971876
14-24	14-25	88-47-23	289-47-33	14.308	-62679.771	-88137.158	28.144	-2480532.174752
14-25	14-26	88-51-52	198-39-25	21.710	-62674.926	-88150.621	-15.724	1386080.364604
14-26	14-27	269-24-56	288-04-21	2.850	-62695.495	-88157.566	-19.685	1735381.686710
14-27	14-16	83-32-55	191-37-16	2.095	-62694.611	-88160.275	-1.168	102971.201200
							倍面積	688.441809
							面積	344.2209045

地 器械点	番 : 14-4 視準点	内角	方向角	距離	[1] X(i)	[2] Y(i)	[3] X(i+1)-X(i-1)	[2]*[3]
14-21	14-17	87-08-07	108-08-17	0.061	-62703.070	-88146.103	-23.318	2055390.829754
14-17	14-18	135-39-18	63-47-35	5.009	-62703.089	-88146.045	2.193	-193304.276685
14-18	14-22	130-28-57	14-16-32	21.437	-62700.877	-88141.551	22.987	-2026109.832837
14-22	14-24	96-03-44	290-20-16	0.952	-62680.102	-88136.265	21.106	-1860204.009090
14-24	14-21	90-39-54	201-00-10	24.957	-62679.771	-88137.158	-22.968	2024334.244944
							倍面積	106.956086
							面積	53.4780430

地 器械点	番 : 14-5 視準点	内角	方向角	距離	[1] X(i)	[2] Y(i)	[3] X(i+1)-X(i-1)	[2]*[3]
14-19	14-20	10-56-31	14-17-17	21.900	-62667.682	-88133.093	9.490	-836383.052570
14-20	14-1	167-55-12	2-12-29	3.218	-62646.459	-88127.688	24.439	-2153752.567032
14-1	14-2	90-50-13	273-02-42	5.516	-62643.243	-88127.564	3.509	-309239.622076
14-2	14-3	84-01-35	177-04-17	13.016	-62642.950	-88133.072	-12.706	1119818.812832
14-3	14-19	186-16-29	183-20-46	11.753	-62655.949	-88132.407	-24.732	2179690.689924
							倍面積	134.261078
							面積	67.1305390

地 器械点	番 : 14-6 視準点	内角	方向角	距離	[1] X(i)	[2] Y(i)	[3] X(i+1)-X(i-1)	[2]*[3]
14-22	14-19	83-59-20	14-19-36	12.819	-62680.102	-88136.265	12.089	-1065479.307585
14-19	14-23	3-15-56	197-35-32	8.751	-62667.682	-88133.093	4.078	-359406.753254
14-23	14-24	183-09-47	200-45-19	4.007	-62676.024	-88135.738	-12.089	1065472.936682
14-24	14-22	89-34-57	110-20-16	0.952	-62679.771	-88137.158	-4.078	359423.330324
							倍面積	10.206167
							面積	5.1030835
							合計	985.0556055

B - 15

