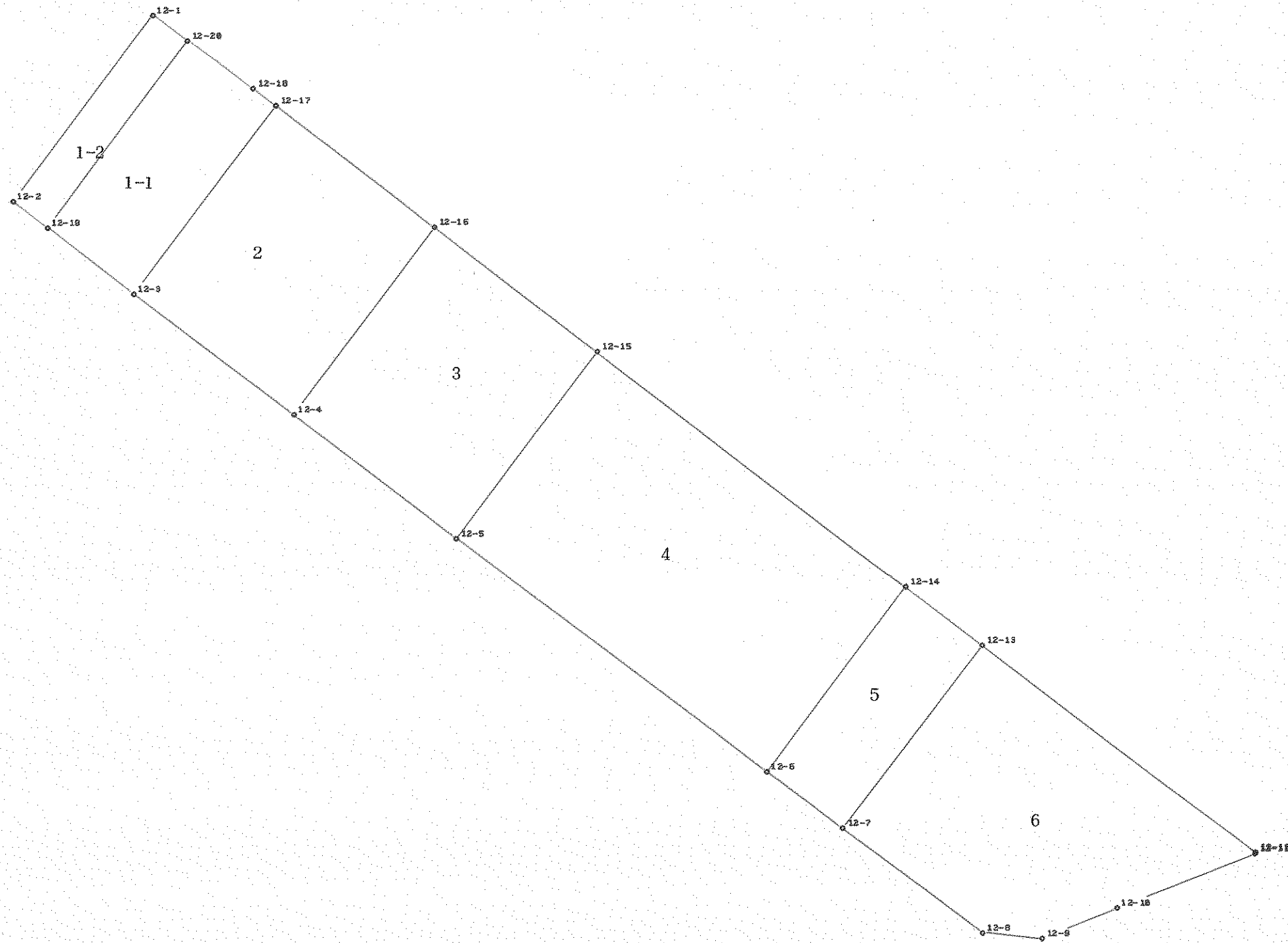


B - 12



SCALE 1/500.000 ANGLE 20.000

* * 座 標 L I S T * * (現 場 N O . 1)

測 点 名	X 座 標	Y 座 標
12-1	-61005.805	-87596.228
12-2	-61028.077	-87603.053
12-3	-61032.483	-87588.520
12-4	-61038.308	-87569.425
12-5	-61044.238	-87549.937
12-6	-61055.504	-87512.975
12-7	-61058.284	-87503.840
12-8	-61063.316	-87487.345
12-9	-61061.763	-87481.517
12-10	-61056.312	-87475.556
12-11	-61046.484	-87464.533
12-12	-61046.380	-87464.506
12-13	-61036.290	-87497.131
12-14	-61033.443	-87506.251
12-15	-61021.965	-87543.136
12-16	-61015.908	-87562.585
12-17	-61009.964	-87581.655
12-18	-61009.129	-87584.337
12-19	-61029.319	-87598.956
12-20	-61006.958	-87592.103

* * 面積計算 (座標法) * *

地番 : 12-1-1
器械点 視準点

内角	方向角	距離	[1] X(i)	[2] Y(i)	[3] X(i+1)-X(i-1)	[2]*[3]
89-49-43	106-51-57	10.905	-61029.319	-87598.956	-25.525	2235963.351900
90-05-18	16-57-15	23.542	-61032.483	-87588.520	19.355	-1695275.804600
90-20-20	287-17-35	2.809	-61009.964	-87581.655	23.354	-2045381.970870
178-19-29	285-37-04	8.064	-61009.129	-87584.337	3.006	-263278.517022
91-25-10	197-02-14	23.388	-61006.958	-87592.103	-20.190	1768484.559570
					倍面積	511.618978
					面積	255.8094890
					(坪数)	(77.382)

* * 面積計算 (座標法) * *

地番 : 12-1-2
器械点 視準点

内角	方向角	距離	[1] X(i)	[2] Y(i)	[3] X(i+1)-X(i-1)	[2]*[3]
91-25-10	197-02-14	23.294	-61005.805	-87596.228	-21.119	1849944.739132
89-49-43	106-51-57	4.282	-61028.077	-87603.053	-23.514	2059898.188242
90-10-17	17-02-14	23.388	-61029.319	-87598.956	21.119	-1850002.351764
88-34-50	285-37-04	4.283	-61006.958	-87592.103	23.514	-2059640.709942
					倍面積	199.865668
					面積	99.9328340
					(坪数)	(30.229)

* * 面積計算 (座標法) * *

地番 : 12-2
器械点 視準点

内角	方向角	距離	[1] X(i)	[2] Y(i)	[3] X(i+1)-X(i-1)	[2]*[3]
90-00-37	106-57-52	19.964	-61032.483	-87588.520	-28.344	2482609.010880
90-00-58	16-58-50	23.421	-61038.308	-87569.425	16.575	-1451463.219375
90-19-53	287-18-43	19.975	-61015.908	-87562.585	28.344	-2481873.909240
89-38-32	196-57-15	23.542	-61009.964	-87581.655	-16.575	1451665.931625
					倍面積	937.813890
					面積	468.9069450
					(坪数)	(141.844)

* * 面積計算 (座標法) * *

地番 : 12-3
器械点 視準点

内角	方向角	距離	[1] X(i)	[2] Y(i)	[3] X(i+1)-X(i-1)	[2]*[3]
89-56-38	106-55-28	20.370	-61038.308	-87569.425	-28.330	2480841.810250
90-03-20	16-58-48	23.288	-61044.238	-87549.937	16.343	-1430828.620391
90-19-05	287-17-53	20.370	-61021.965	-87543.136	28.330	-2480097.042880
89-40-57	196-58-50	23.421	-61015.908	-87562.585	-16.343	1431035.326655
					倍面積	951.473634
					面積	475.7368170
					(坪数)	(143.910)

* * 面積計算 (座標法) * *

地番 : 12-4
器械点 視準点

器械点	視準点	内角	方向角	距離	[1] X(i)	[2] Y(i)	[3] X(i+1)-X(i-1)	[2]*[3]
12-5	12-6	89-58-16	106-57-04	38.641	-61044.238	-87549.937	-33.539	2936337.337043
12-6	12-14	89-59-59	16-57-03	23.063	-61055.504	-87512.975	10.795	-944702.565125
12-14	12-15	90-20-04	287-17-07	38.630	-61033.443	-87506.251	33.539	-2934872.152289
12-15	12-5	89-41-41	196-58-48	23.288	-61021.965	-87543.136	-10.795	945028.153120
							倍面積	1790.772749
							面積	895.3863745
							(坪数)	(270.854)

* * 面積計算 (座標法) * *

地番 : 12-5
器械点 視準点

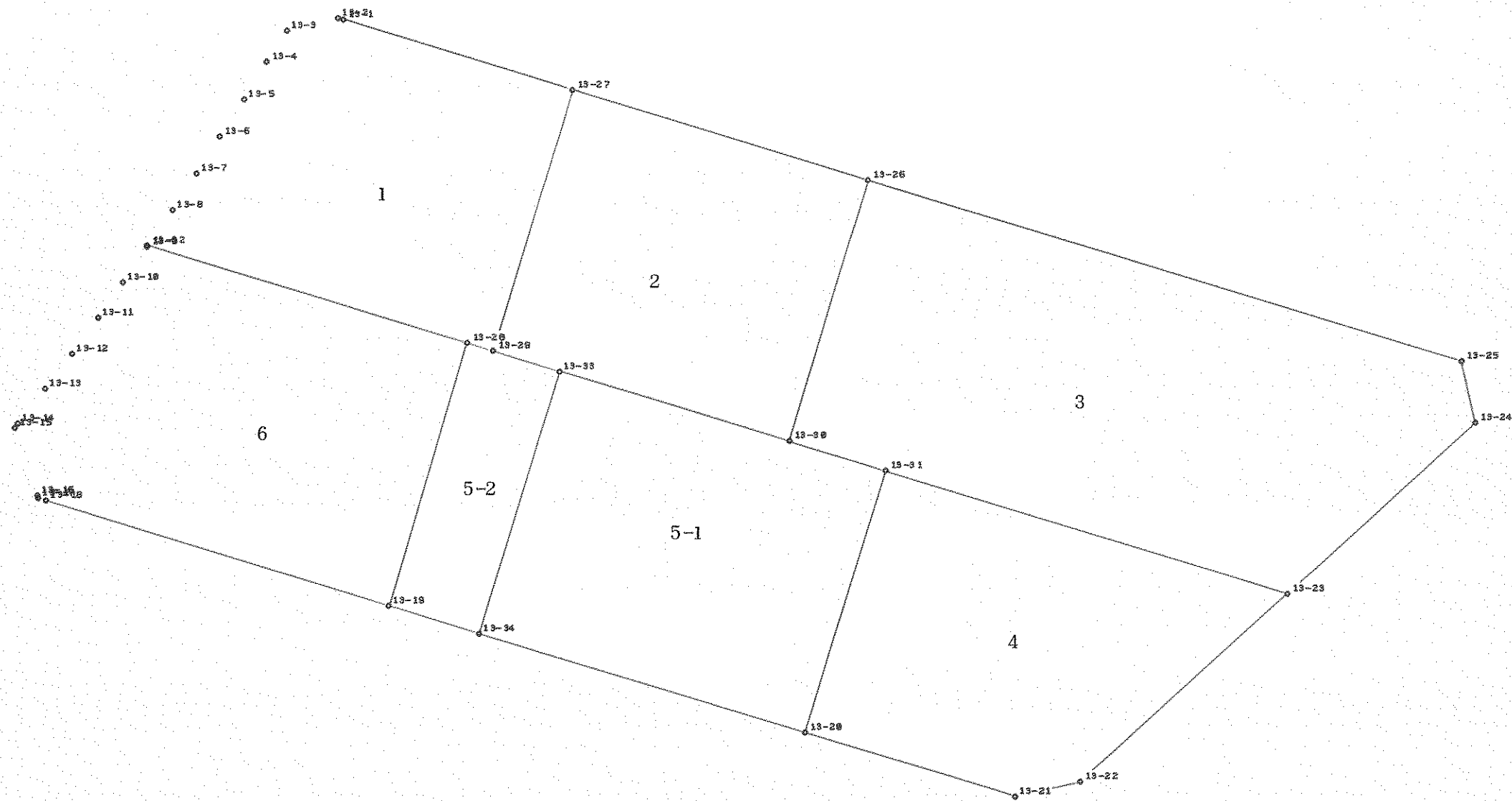
器械点	視準点	内角	方向角	距離	[1] X(i)	[2] Y(i)	[3] X(i+1)-X(i-1)	[2]*[3]
12-6	12-7	89-58-32	106-55-35	9.549	-61055.504	-87512.975	-24.841	2173909.811975
12-7	12-13	90-02-14	16-57-49	22.994	-61058.284	-87503.840	19.214	-1681298.781760
12-13	12-14	90-22-24	287-20-13	9.554	-61036.290	-87497.131	24.841	-2173516.231171
12-14	12-6	89-36-50	196-57-03	23.063	-61033.443	-87506.251	-19.214	1681345.106714
							倍面積	439.905758
							面積	219.9528790
							(坪数)	(66.535)

* * 面積計算 (座標法) * *

地番 : 12-6
器械点 視準点

器械点	視準点	内角	方向角	距離	[1] X(i)	[2] Y(i)	[3] X(i+1)-X(i-1)	[2]*[3]
12-7	12-8	90-00-05	106-57-54	17.245	-61058.284	-87503.840	-27.026	2364878.779840
12-8	12-9	148-06-50	75-04-44	6.031	-61063.316	-87487.345	-3.479	304368.473255
12-9	12-10	152-28-48	47-33-32	8.078	-61061.763	-87481.517	7.004	-612720.545068
12-10	12-11	180-43-16	48-16-48	14.768	-61056.312	-87475.556	15.279	-1336539.020124
12-11	12-12	146-16-25	14-33-13	0.107	-61046.484	-87464.533	9.932	-868697.741756
12-12	12-13	92-37-54	287-11-07	34.150	-61046.380	-87464.506	10.194	-891613.174164
12-13	12-7	89-46-42	196-57-49	22.994	-61036.290	-87497.131	-11.904	1041565.847424
							倍面積	1242.619407
							面積	621.3097035
							(坪数)	(187.946)

B - 13



* * 座 標 L I S T * * (現 場 N O . 1)

測点名	X 座 標	Y 座 標
13-1	-61035.496	-87599.271
13-2	-61035.382	-87599.818
13-3	-61036.479	-87604.505
13-4	-61039.360	-87606.239
13-5	-61042.781	-87608.340
13-6	-61046.167	-87610.502
13-7	-61049.542	-87612.677
13-8	-61052.901	-87614.874
13-9	-61056.213	-87617.145
13-10	-61059.517	-87619.426
13-11	-61062.807	-87621.726
13-12	-61066.057	-87624.107
13-13	-61069.257	-87626.519
13-14	-61072.449	-87628.941
13-15	-61072.833	-87629.200
13-16	-61079.095	-87627.210
13-17	-61079.244	-87627.112
13-18	-61079.486	-87626.417
13-19	-61088.955	-87595.219
13-20	-61100.541	-87557.150
13-21	-61106.344	-87538.113
13-22	-61104.985	-87532.078
13-23	-61087.773	-87513.110
13-24	-61072.200	-87495.937
13-25	-61066.550	-87497.223
13-26	-61050.088	-87551.358
13-27	-61041.872	-87578.329
13-28	-61065.024	-87587.918
13-29	-61065.739	-87585.568
13-30	-61073.945	-87558.583
13-31	-61076.618	-87549.792
13-32	-61056.149	-87617.101
13-33	-61067.553	-87579.601
13-34	-61091.486	-87586.903

* * 面積計算 (座標法) * *

地番 : 13-1
器械点 視準点

	内角	方向角	距離	[1] X(i)	[2] Y(i)	[3] X(i+1)-X(i-1)	[2]*[3]
13-27	90-03-37	286-56-00	21.891	-61041.872	-87578.329	30.243	-2648631.403947
13-1	174-50-21	281-46-21	0.559	-61035.496	-87599.271	6.490	-568519.268790
13-2	155-03-16	256-49-37	4.814	-61035.382	-87599.818	-0.983	86110.621094
13-3	134-12-57	211-02-34	3.363	-61036.479	-87604.505	-3.978	348490.720890
13-4	180-30-48	211-33-22	4.015	-61039.360	-87606.239	-6.302	552094.518178
13-5	181-00-09	212-33-31	4.017	-61042.781	-87608.340	-6.807	596349.970380
13-6	180-14-27	212-47-58	4.015	-61046.167	-87610.502	-6.761	592334.604022
13-7	180-23-16	213-11-14	4.014	-61049.542	-87612.677	-6.734	589983.766918
13-8	181-15-03	214-26-17	3.939	-61052.901	-87614.874	-6.607	578871.472518
13-32	72-28-35	106-54-52	30.503	-61056.149	-87617.101	-12.123	1062182.115423
13-28	180-00-00	106-54-52	2.456	-61065.024	-87587.918	-9.590	839968.133620
13-29	89-57-31	16-52-23	24.940	-61065.739	-87585.568	23.152	-2027781.070336
						倍面積	1454.179970
						面積	727.0899850
						(坪數)	(219.944)

* * 面積計算 (座標法) * *

地番 : 13-2
器械点 視準点

	内角	方向角	距離	[1] X(i)	[2] Y(i)	[3] X(i+1)-X(i-1)	[2]*[3]
13-26	90-05-36	286-56-31	28.195	-61050.088	-87551.358	32.073	-2808034.705134
13-27	89-55-52	196-52-23	24.940	-61041.872	-87578.329	-15.651	1370688.427179
13-29	90-02-29	106-54-52	6.237	-61065.739	-87585.568	-25.681	2249284.971808
13-33	180-00-00	106-54-52	21.968	-61067.553	-87579.601	-8.206	718678.205806
13-30	89-56-03	16-50-55	24.927	-61073.945	-87558.583	17.465	-1529210.652095
						倍面積	1406.247564
						面積	703.1237820
						(坪數)	(212.694)

* * 面積計算 (座標法) * *

地番 : 13-3
器械点 視準点

	内角	方向角	距離	[1] X(i)	[2] Y(i)	[3] X(i+1)-X(i-1)	[2]*[3]
13-26	89-56-04	196-50-55	24.927	-61050.088	-87551.358	-7.395	647442.292410
13-30	90-03-57	106-54-52	9.188	-61073.945	-87558.583	-26.530	2322929.206990
13-31	180-00-00	106-54-52	38.340	-61076.618	-87549.792	-13.828	1210638.523776
13-23	120-52-58	47-47-50	23.183	-61087.773	-87513.110	4.418	-386632.919980
13-24	119-22-48	347-10-38	5.795	-61072.200	-87495.937	21.223	-1856926.270951
13-25	119-44-13	286-54-51	56.583	-61066.550	-87497.223	22.112	-1934738.594976
						倍面積	2712.237269
						面積	1356.1186345
						(坪數)	(410.225)

* * 面積計算 (座標法) * *

地番 器械点	13-4 視準点	内角	方向角	距離	[1] X(i)	[2] Y(i)	[3] X(i+1)-X(i-1)	[2]*[3]
13-20	13-21	89-51-22	106-57-10	19.902	-61100.541	-87557.150	-29.726	2602723.840900
13-21	13-22	150-21-24	77-18-34	6.186	-61106.344	-87538.113	-4.444	389019.374172
13-22	13-23	150-28-09	47-46-43	25.613	-61104.985	-87532.078	18.571	-1625558.220538
13-23	13-31	59-08-09	286-54-52	38.340	-61087.773	-87513.110	28.367	-2482484.391370
13-31	13-20	90-10-56	197-05-48	25.029	-61076.618	-87549.792	-12.768	1117835.744256
							倍面積	1536.347420
							面積	768.1737100
							(坪数)	(232.372)

* * 面積計算 (座標法) * *

地番 器械点	13-5-1 視準点	内角	方向角	距離	[1] X(i)	[2] Y(i)	[3] X(i+1)-X(i-1)	[2]*[3]
13-31	13-30	89-49-04	286-54-52	9.188	-61076.618	-87549.792	26.596	-2328474.268032
13-30	13-33	180-00-00	286-54-52	21.968	-61073.945	-87558.583	9.065	-793718.554895
13-33	13-34	90-03-10	196-58-02	25.022	-61067.553	-87579.601	-17.541	1536233.781141
13-34	13-20	89-57-36	106-55-38	31.100	-61091.486	-87586.903	-32.988	2889316.756164
13-20	13-31	90-10-10	17-05-48	25.029	-61100.541	-87557.150	14.868	-1301799.706200
							倍面積	1558.008178
							面積	779.0040890
							(坪数)	(235.648)

* * 面積計算 (座標法) * *

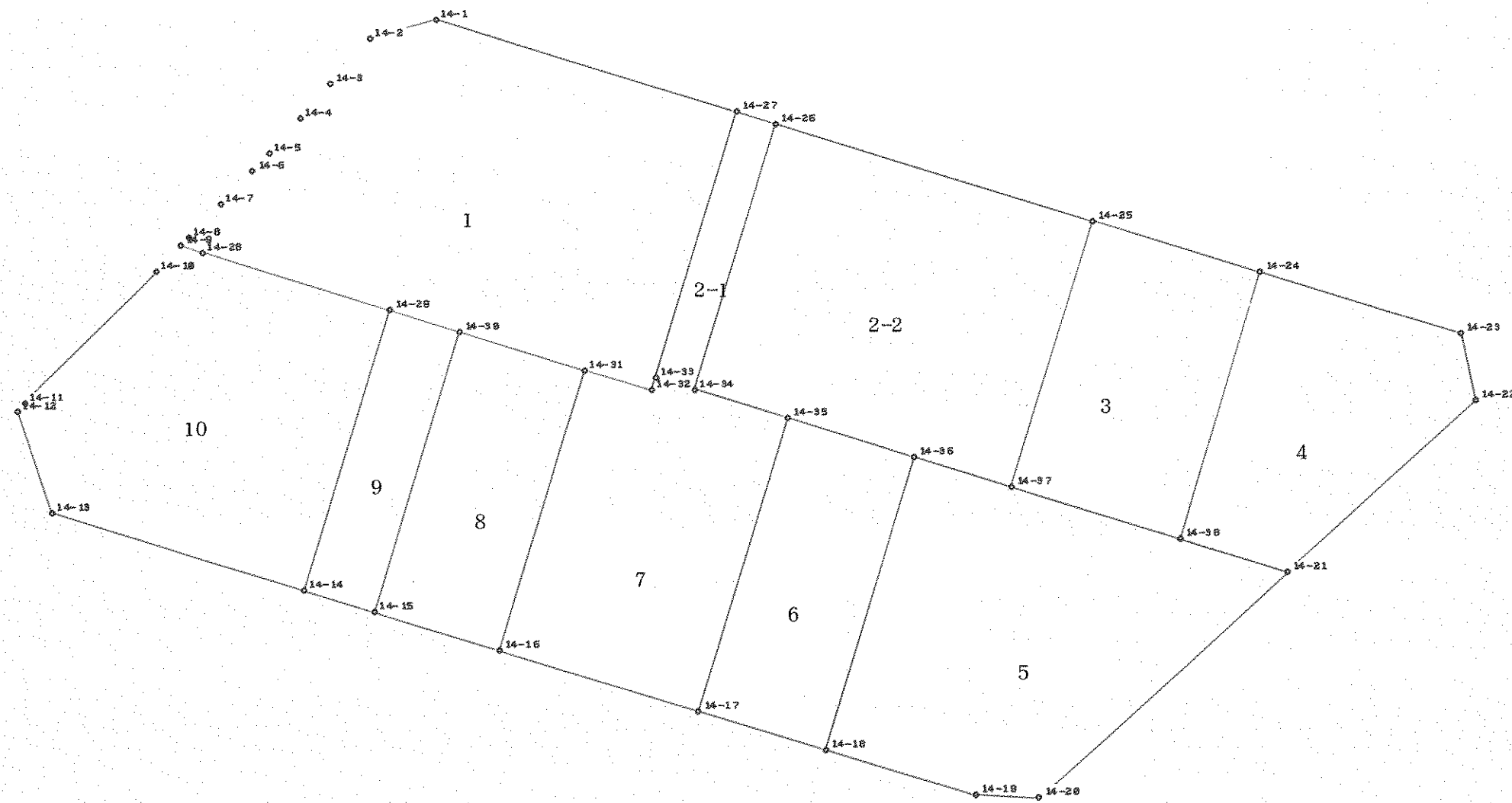
地番 器械点	13-5-2 視準点	内角	方向角	距離	[1] X(i)	[2] Y(i)	[3] X(i+1)-X(i-1)	[2]*[3]
13-29	13-28	180-00-00	286-54-52	2.456	-61065.739	-87585.568	2.529	-221503.901472
13-28	13-19	90-03-10	196-58-02	25.020	-61065.024	-87587.918	-23.216	2033441.104288
13-19	13-34	89-57-36	106-55-38	8.693	-61088.955	-87595.219	-26.462	2317944.685178
13-34	13-33	90-02-24	16-58-02	25.022	-61091.486	-87586.903	21.402	-1874534.898006
13-33	13-29	89-56-50	286-54-52	6.237	-61067.553	-87579.601	25.747	-2254911.986947
							倍面積	435.003041
							面積	217.5015205
							(坪数)	(65.794)

* * 面積計算 (座標法) * *

地番 : 13-6
器械点 視準点

	内角	方向角	距離	[1] X(i)	[2] Y(i)	[3] X(i+1)-X(i-1)	[2]*[3]
13-32	13-9	107-31-25	214-26-17	0.077	-61056.149	-87617.101	-771994.276911
13-9	13-10	180-10-56	214-37-13	4.015	-61056.213	-87617.145	295094.544360
13-10	13-11	180-20-12	214-57-25	4.014	-61059.517	-87619.426	577762.495044
13-11	13-12	181-16-12	216-13-37	4.029	-61062.807	-87621.726	573046.088040
13-12	13-13	180-46-49	217-00-26	4.007	-61066.057	-87624.107	565175.490150
13-13	13-14	180-10-59	217-11-25	4.007	-61069.257	-87626.519	560108.709448
13-14	13-15	176-48-31	213-59-56	0.463	-61072.449	-87628.941	313361.093016
13-15	13-16	128-22-17	162-22-13	6.571	-61072.833	-87629.200	582383.663200
13-16	13-17	164-17-46	146-39-59	0.178	-61079.095	-87627.210	561778.043310
13-17	13-18	142-31-54	109-11-53	0.736	-61079.244	-87627.112	34262.200792
13-18	13-19	177-41-08	106-53-01	32.603	-61079.486	-87626.417	850940.135487
13-19	13-28	90-05-01	16-58-02	25.020	-61088.955	-87595.219	-1266802.057178
13-28	13-32	89-56-50	286-54-52	30.503	-61065.024	-87587.918	-2873409.237908
						倍面積	1706.890850
						面積	853.4454250
						(坪数)	(258.167)

B - 14



* * 座 標 L I S T * * (現 場 N O . 1)

測 点 名	X 座 標	Y 座 標
14-1	-61083.572	-87633.632
14-2	-61085.204	-87639.243
14-3	-61089.045	-87642.521
14-4	-61092.057	-87645.165
14-5	-61095.044	-87647.834
14-6	-61096.525	-87649.184
14-7	-61099.432	-87651.951
14-8	-61102.329	-87654.723
14-9	-61102.999	-87655.372
14-10	-61105.172	-87657.533
14-11	-61116.549	-87668.792
14-12	-61117.264	-87669.416
14-13	-61125.837	-87666.438
14-14	-61132.466	-87644.758
14-15	-61134.275	-87638.812
14-16	-61137.548	-87628.028
14-17	-61142.706	-87610.997
14-18	-61146.024	-87600.117
14-19	-61149.980	-87587.160
14-20	-61150.116	-87581.813
14-21	-61130.713	-87560.470
14-22	-61116.131	-87544.362
14-23	-61110.315	-87545.646
14-24	-61105.114	-87562.818
14-25	-61100.745	-87577.186
14-26	-61092.463	-87604.401
14-27	-61091.450	-87607.705
14-28	-61103.610	-87653.486
14-29	-61108.483	-87637.471
14-30	-61110.279	-87631.527
14-31	-61113.551	-87620.738
14-32	-61115.305	-87614.974
14-33	-61114.212	-87614.647
14-34	-61115.225	-87611.299
14-35	-61117.623	-87603.373
14-36	-61120.955	-87592.488
14-37	-61123.507	-87584.113
14-38	-61127.881	-87569.764

* * 面積計算 (座標法) * *

地番 : 14-1
器械点 視準点

	内角	方向角	距離	[1] X(i)	[2] Y(i)	[3] X(i+1)-X(i-1)	[2]*[3]
14-1	146-52-51	253-46-57	5.844	-61083.572	-87633.632	6.246	-547359.665472
14-2	146-41-45	220-28-42	5.050	-61085.204	-87639.243	-5.473	479649.576939
14-3	180-47-57	221-16-39	4.008	-61089.045	-87642.521	-6.853	600614.196413
14-4	180-30-16	221-46-55	4.006	-61092.057	-87645.165	-5.999	525783.344835
14-5	180-34-07	222-21-02	2.004	-61095.044	-87647.834	-4.468	391610.522312
14-6	181-14-10	223-35-12	4.013	-61096.525	-87649.184	-4.388	384604.619392
14-7	180-09-01	223-44-13	4.010	-61099.432	-87651.951	-5.804	508731.923604
14-8	180-21-03	224-05-16	0.933	-61102.329	-87654.723	-3.567	312664.396941
14-9	63-51-46	107-57-02	1.983	-61102.999	-87655.372	-1.281	112286.531532
14-28	178-58-24	106-55-26	16.740	-61103.610	-87653.486	-5.484	480691.717224
14-29	179-53-19	106-48-45	6.209	-61108.483	-87637.471	-6.669	584454.294099
14-30	180-03-31	106-52-16	11.274	-61110.279	-87631.527	-5.068	444116.578836
14-31	180-03-15	106-55-31	6.025	-61113.551	-87620.738	-5.026	440381.829188
14-32	89-43-50	16-39-21	1.141	-61115.305	-87614.974	-0.661	57913.497814
14-33	180-18-18	16-57-39	23.797	-61114.212	-87614.647	23.855	-2090047.404185
14-27	89-56-27	286-54-06	27.097	-61091.450	-87607.705	30.640	-2684300.081200
						倍面積	1795.878272
						面積	897.9391360
						(坪數)	(271.626)

* * 面積計算 (座標法) * *

地番 : 14-2-1
器械点 視準点

	内角	方向角	距離	[1] X(i)	[2] Y(i)	[3] X(i+1)-X(i-1)	[2]*[3]
14-33	89-52-24	106-50-03	3.498	-61114.212	-87614.647	-23.775	2083038.232425
14-34	90-01-31	16-51-34	23.784	-61115.225	-87611.299	21.749	-1905458.141951
14-26	90-11-10	287-02-44	3.456	-61092.463	-87604.401	23.775	-2082794.633775
14-27	89-54-55	196-57-39	23.797	-61091.450	-87607.705	-21.749	1905379.976045
						倍面積	165.432744
						面積	82.7163720
						(坪數)	(25.021)

* * 面積計算 (座標法) * *

地番 : 14-2-2
器械点 視準点

	内角	方向角	距離	[1] X(i)	[2] Y(i)	[3] X(i+1)-X(i-1)	[2]*[3]
14-34	89-58-25	106-49-59	8.281	-61115.225	-87611.299	-25.160	2204300.282840
14-35	180-11-12	107-01-11	11.384	-61117.623	-87603.373	-5.730	501967.327290
14-36	179-55-38	106-56-49	8.755	-61120.955	-87592.488	-5.884	515394.199392
14-37	89-58-45	16-55-34	23.793	-61123.507	-87584.113	20.210	-1770074.923730
14-25	89-59-59	286-55-33	28.447	-61100.745	-87577.186	31.044	-2718746.162184
14-26	89-56-01	196-51-34	23.784	-61092.463	-87604.401	-14.480	1268511.726480
						倍面積	1352.450088
						面積	676.2250440
						(坪數)	(204.558)

* * 面積計算 (座標法) * *

地番 : 14-3
器械点 視準点

	内角	方向角	距離	[1] X(i)	[2] Y(i)	[3] X(i+1)-X(i-1)	[2]*[3]
14-37	90-01-36	106-57-10	15.001	-61123.507	-87584.113	-27.136	2376682.490368
14-38	90-00-49	16-57-59	23.803	-61127.881	-87569.764	18.393	-1610670.669252
14-24	89-56-49	286-54-48	15.018	-61105.114	-87562.818	27.136	-2376104.629248
14-25	90-00-46	196-55-34	23.793	-61100.745	-87577.186	-18.393	1610807.182098
						倍面積	714.373966
						面積	357.1869830
						(坪数)	(108.049)

* * 面積計算 (座標法) * *

地番 : 14-4
器械点 視準点

	内角	方向角	距離	[1] X(i)	[2] Y(i)	[3] X(i+1)-X(i-1)	[2]*[3]
14-38	89-58-49	106-56-48	9.716	-61127.881	-87569.764	-25.599	2241698.388636
14-21	120-54-00	47-50-48	21.728	-61130.713	-87560.470	11.750	-1028835.522500
14-22	119-42-14	347-33-02	5.956	-61116.131	-87544.362	20.398	-1785729.896076
14-23	119-17-59	286-51-01	17.942	-61110.315	-87545.646	11.017	-964490.381982
14-24	90-06-58	196-57-59	23.803	-61105.114	-87562.818	-17.566	1538128.460988
						倍面積	771.049066
						面積	385.5245330
						(坪数)	(116.621)

* * 面積計算 (座標法) * *

地番 : 14-5
器械点 視準点

	内角	方向角	距離	[1] X(i)	[2] Y(i)	[3] X(i+1)-X(i-1)	[2]*[3]
14-36	89-58-45	196-55-34	26.204	-61120.955	-87592.488	-22.517	1972320.052296
14-18	90-03-08	106-58-42	13.547	-61146.024	-87600.117	-29.025	2542593.395925
14-19	164-28-43	91-27-25	5.349	-61149.980	-87587.160	-4.092	358406.658720
14-20	136-16-08	47-43-33	28.844	-61150.116	-87581.813	19.267	-1687438.791071
14-21	59-13-15	286-56-48	9.716	-61130.713	-87560.470	22.235	-1946907.050450
14-38	180-00-22	286-57-10	15.001	-61127.881	-87569.764	7.206	-631027.719384
14-37	179-59-39	286-56-49	8.755	-61123.507	-87584.113	6.926	-606607.566638
						倍面積	1338.979398
						面積	669.4896990
						(坪数)	(202.520)

* * 面積計算 (座標法) * *

地番 : 14-6
器械点 視準点

	内角	方向角	距離	[1] X(i)	[2] Y(i)	[3] X(i+1)-X(i-1)	[2]*[3]
14-35	89-53-13	196-54-24	26.216	-61117.623	-87603.373	-21.751	1905460.966123
14-17	90-03-11	106-57-35	11.375	-61142.706	-87610.997	-28.401	2488239.925797
14-18	89-57-59	16-55-34	26.204	-61146.024	-87600.117	21.751	-1905390.144867
14-36	90-05-37	287-01-11	11.384	-61120.955	-87592.488	28.401	-2487714.251688
						倍面積	596.495365
						面積	298.2476825
						(坪数)	(90.219)

* * 面積計算 (座標法) * *

地番 : 14-7
器械点 視準点

	内角	方向角	距離	[1] X(i)	[2] Y(i)	[3] X(i+1)-X(i-1)	[2]*[3]
14-31	89-58-22	196-53-53	25.080	-61113.551	-87620.738	-22.243	1948948.075334
14-16	89-57-05	106-50-58	17.795	-61137.548	-87628.028	-29.155	2554795.156340
14-17	90-03-26	16-54-24	26.216	-61142.706	-87610.997	19.925	-1745649.115225
14-35	89-55-35	286-49-59	8.281	-61117.623	-87603.373	27.481	-2407428.293413
14-34	180-00-04	286-50-03	3.498	-61115.225	-87611.299	3.411	-298842.140889
14-33	89-49-18	196-39-21	1.141	-61114.212	-87614.647	-0.080	7009.171760
14-32	270-16-10	286-55-31	6.025	-61115.305	-87614.974	0.661	-57913.497814
						倍面積	919.356093
						面積	459.6780465
						(坪数)	(139.052)

* * 面積計算 (座標法) * *

地番 : 14-8
器械点 視準点

	内角	方向角	距離	[1] X(i)	[2] Y(i)	[3] X(i+1)-X(i-1)	[2]*[3]
14-30	90-01-00	196-53-16	25.077	-61110.279	-87631.527	-20.724	1816075.765548
14-15	89-59-44	106-53-00	11.270	-61134.275	-87638.812	-27.269	2389822.764428
14-16	90-00-53	16-53-53	25.080	-61137.548	-87628.028	20.724	-1816003.252272
14-31	89-58-23	286-52-16	11.274	-61113.551	-87620.738	27.269	-2389329.904522
						倍面積	565.373182
						面積	282.6865910
						(坪数)	(85.512)

* * 面積計算 (座標法) * *

地番 : 14-9
器械点 視準点

	内角	方向角	距離	[1] X(i)	[2] Y(i)	[3] X(i+1)-X(i-1)	[2]*[3]
14-29	90-05-18	196-54-03	25.066	-61108.483	-87637.471	-22.187	1944412.569077
14-14	90-01-15	106-55-18	6.215	-61132.466	-87644.758	-25.792	2260533.598336
14-15	89-57-58	16-53-16	25.077	-61134.275	-87638.812	22.187	-1944442.321844
14-30	89-55-29	286-48-45	6.209	-61110.279	-87631.527	25.792	-2260192.344384
						倍面積	311.501185
						面積	155.7505925
						(坪数)	(47.114)

* * 面積計算 (座標法) * *

地番 : 14-10
器械点 視準点

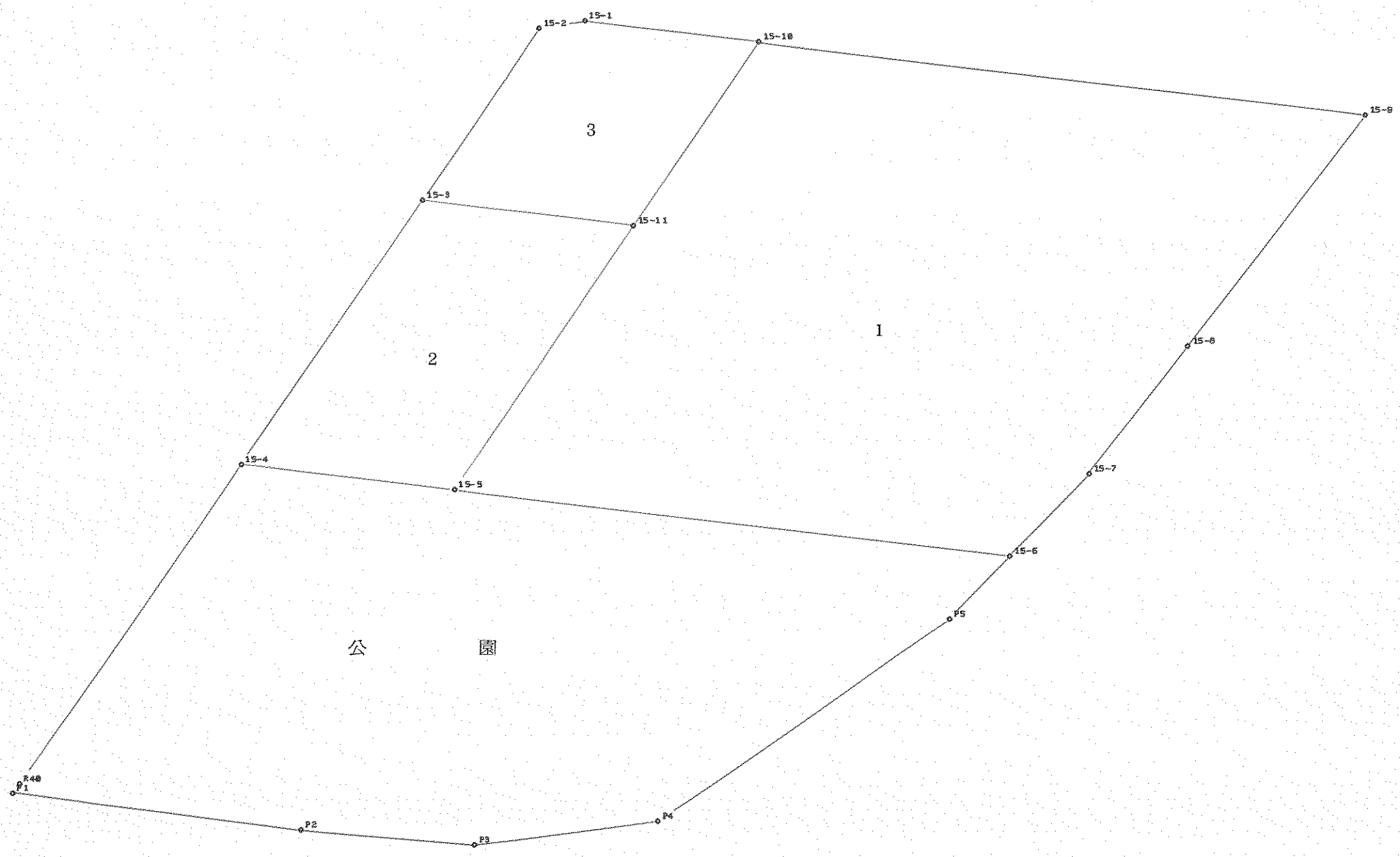
	内角	方向角	距離	[1] X(i)	[2] Y(i)	[3] X(i+1)-X(i-1)	[2]*[3]
14-9	116-53-27	224-50-29	3.065	-61102.999	-87655.372	-1.562	136917.691064
14-10	179-51-36	224-42-05	16.006	-61105.172	-87657.533	-13.550	1187759.572150
14-11	176-24-39	221-06-44	0.949	-61116.549	-87668.792	-12.092	1060091.032864
14-12	119-43-56	160-50-40	9.078	-61117.264	-87669.416	-9.288	814273.535808
14-13	126-09-27	107-00-07	22.671	-61125.837	-87666.438	-15.202	1332705.190476
14-14	89-53-56	16-54-03	25.066	-61132.466	-87644.758	17.354	-1520987.130332
14-29	90-01-23	286-55-26	16.740	-61108.483	-87637.471	28.856	-2528866.863176
14-28	181-01-36	287-57-02	1.983	-61103.610	-87653.486	5.484	-480691.717224
						倍面積	1201.311630
						面積	600.6558150
						(坪数)	(181.698)

B - 15

画地面積成果表

街区番号	画地番号	面 積 <small>m²</small>	摘 要	街区番号	画地番号	面 積 <small>m²</small>	摘 要
B-15	1	4087.53					
	2	870.94					
	3	601.53					
計		5560.00					

B - 15



公園

* * 面積計算 (座標法) * *

地番 : 15-1
器械点 視準点

	内角	方向角	距離	[1] X(i)	[2] Y(i)	[3] X(i+1)-X(i-1)	[2]*[3]
15-9	59-15-07	286-54-08	73.238	-61159.128	-87587.912	44.764	-3920785.292768
15-10	117-22-20	224-16-28	26.744	-61137.835	-87657.986	2.144	-187938.721984
15-11	180-02-28	224-18-56	38.299	-61156.984	-87676.656	-46.552	4081523.690112
15-5	62-30-54	106-49-50	67.088	-61184.387	-87703.412	-46.828	4106975.377136
15-6	126-56-34	53-46-24	13.741	-61203.812	-87639.197	-11.304	990673.482888
15-7	174-03-07	47-49-31	19.499	-61195.691	-87628.112	21.213	-1858855.139856
15-8	179-49-30	47-39-01	34.842	-61182.599	-87613.662	36.563	-3203418.323706
						倍面積	8175.071822
						面積	4087.5359110
						(坪数)	(1236.479)

* * 面積計算 (座標法) * *

地番 : 15-2
器械点 視準点

	内角	方向角	距離	[1] X(i)	[2] Y(i)	[3] X(i+1)-X(i-1)	[2]*[3]
15-3	117-35-32	224-31-00	38.389	-61149.552	-87701.080	-19.941	1748847.236280
15-4	62-22-07	106-53-07	25.691	-61176.925	-87727.995	-34.835	3056004.705825
15-5	117-25-49	44-18-56	38.299	-61184.387	-87703.412	19.941	-1748893.738692
15-11	62-36-32	286-55-28	25.530	-61156.984	-87676.656	34.835	-3054216.311760
						倍面積	1741.891653
						面積	870.9458265
						(坪数)	(263.461)

* * 面積計算 (座標法) * *

地番 : 15-3
器械点 視準点

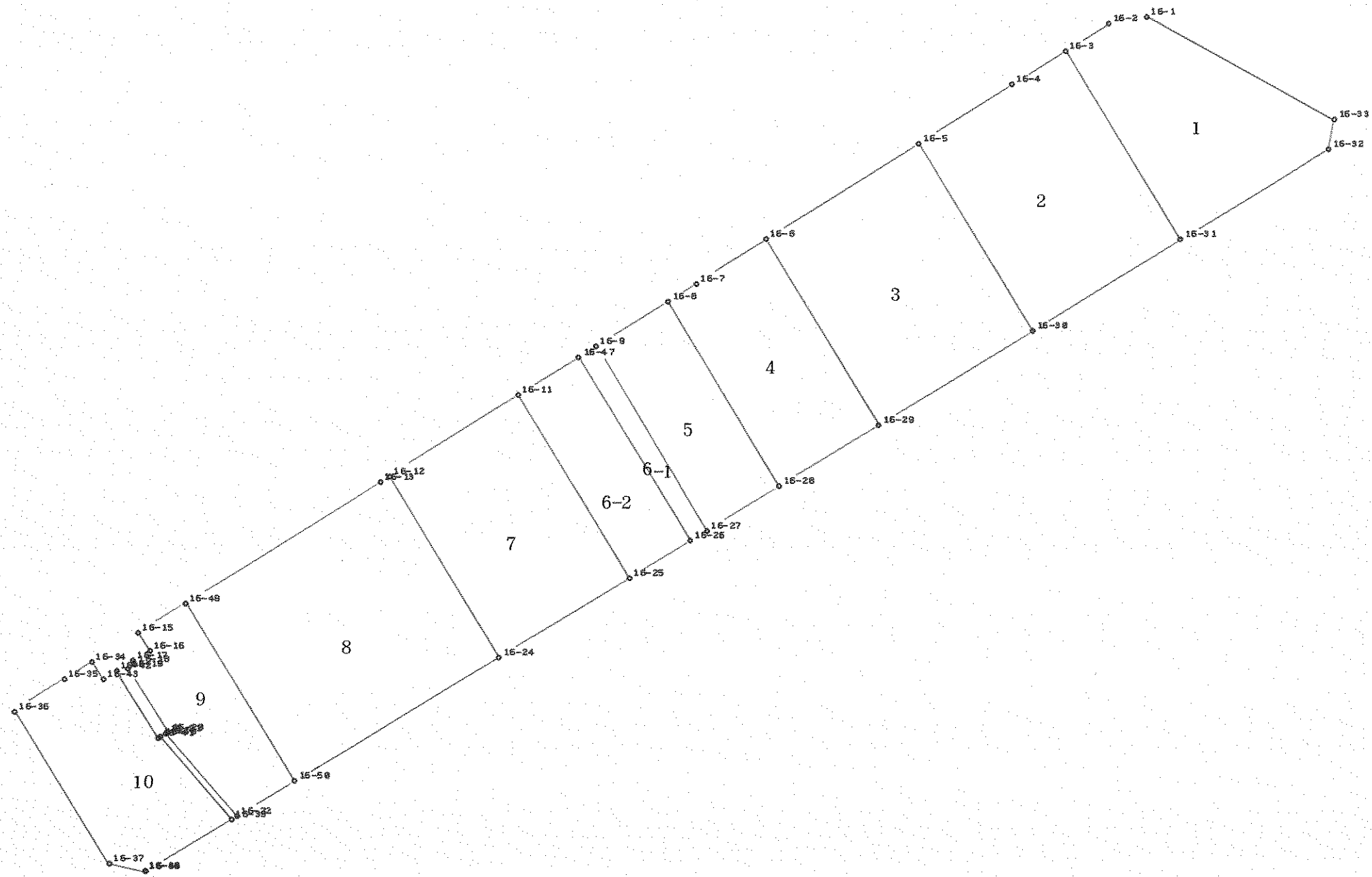
	内角	方向角	距離	[1] X(i)	[2] Y(i)	[3] X(i+1)-X(i-1)	[2]*[3]
15-1	161-55-36	268-50-52	5.569	-61131.710	-87678.119	6.013	-527208.529547
15-2	135-36-09	224-27-01	24.837	-61131.822	-87683.687	-17.842	1564452.343454
15-3	62-28-27	106-55-28	25.530	-61149.552	-87701.080	-25.162	2206734.574960
15-11	117-21-00	44-16-28	26.744	-61156.984	-87676.656	11.717	-1027307.378352
15-10	62-38-48	286-55-16	21.044	-61137.835	-87657.986	25.274	-2215467.938164
						倍面積	1203.072351
						面積	601.5361755
						(坪数)	(181.964)

* * 座 標 L I S T * * (現 場 N O . 1)

測 点 名	X 座 標	Y 座 標
15-1	-61131.710	-87678.119
15-2	-61131.822	-87683.687
15-3	-61149.552	-87701.080
15-4	-61176.925	-87727.995
15-5	-61184.387	-87703.412
15-6	-61203.812	-87639.197
15-7	-61195.691	-87628.112
15-8	-61182.599	-87613.662
15-9	-61159.128	-87587.912
15-10	-61137.835	-87657.986
15-11	-61156.984	-87676.656

B - 16

B - 16



SCALE 1/700.000 ANGLE 16.000

* * 座 標 L I S T * * (現 場 N O . 1)

測点名	X 座 標	Y 座 標
16-1	-61064.594	-87421.868
16-2	-61066.357	-87426.665
16-3	-61070.963	-87431.849
16-4	-61076.676	-87438.178
16-5	-61086.595	-87449.131
16-6	-61102.811	-87467.027
16-7	-61110.281	-87475.259
16-8	-61113.255	-87478.555
16-9	-61120.987	-87487.110
16-11	-61129.198	-87496.193
16-12	-61142.778	-87511.226
16-13	-61143.796	-87512.351
16-15	-61169.345	-87540.731
16-16	-61171.477	-87538.832
16-17	-61173.209	-87540.764
16-18	-61173.512	-87540.503
16-19	-61174.202	-87541.281
16-20	-61181.693	-87534.511
16-21	-61181.940	-87534.778
16-22	-61191.362	-87523.594
16-24	-61164.035	-87492.595
16-25	-61150.617	-87477.389
16-26	-61144.254	-87470.153
16-27	-61142.511	-87468.185
16-28	-61134.880	-87459.542
16-29	-61124.603	-87447.860
16-30	-61108.610	-87429.725
16-31	-61093.163	-87412.183
16-32	-61077.851	-87394.820
16-33	-61073.727	-87394.791
16-34	-61174.243	-87546.181
16-35	-61177.248	-87549.520
16-36	-61182.651	-87555.305
16-37	-61200.462	-87539.176
16-38	-61200.716	-87534.306
16-39	-61191.883	-87524.192
16-40	-61182.469	-87535.358
16-41	-61182.694	-87535.621
16-42	-61174.865	-87542.715
16-43	-61176.300	-87544.205
16-44	-61200.680	-87534.262
16-45	-61200.721	-87534.220
16-47	-61122.743	-87489.053
16-49	-61164.413	-87535.253
16-50	-61185.361	-87516.787

* * 面積計算 (座標法) * *

地番 器械点	16-1 視準点	内角	方向角	距離	[1] X(i)	[2] Y(i)	[3] X(i+1)-X(i-1)	[2]*[3]
16-31	16-32	90-07-41	48-35-30	23.150	-61093.163	-87412.183	-6.888	602095.116504
16-32	16-33	131-48-40	0-24-10	4.124	-61077.851	-87394.820	19.436	-1698605.721520
16-33	16-1	108-14-11	288-38-21	28.576	-61073.727	-87394.791	13.257	-1158592.744287
16-1	16-2	141-10-53	249-49-14	5.111	-61064.594	-87421.868	7.370	-644299.167160
16-2	16-3	158-33-30	228-22-44	6.935	-61066.357	-87426.665	-6.369	556820.429385
16-3	16-31	90-05-05	138-27-49	29.658	-61070.963	-87431.849	-26.806	2343698.144294
							倍面積	1116.057216
							面積	558.0286080
							(坪數)	(168.803)

* * 面積計算 (座標法) * *

地番 器械点	16-2 視準点	内角	方向角	距離	[1] X(i)	[2] Y(i)	[3] X(i+1)-X(i-1)	[2]*[3]
16-30	16-31	90-01-46	48-38-01	23.374	-61108.610	-87429.725	-6.568	574238.433800
16-31	16-3	89-49-48	318-27-49	29.658	-61093.163	-87412.183	37.647	-3290806.453401
16-3	16-4	89-27-53	227-55-42	8.526	-61070.963	-87431.849	16.487	-1441488.894463
16-4	16-5	179-54-28	227-50-10	14.777	-61076.676	-87438.178	-15.632	1366833.598496
16-5	16-30	90-46-05	138-36-15	29.347	-61086.595	-87449.131	-31.934	2792600.549354
							倍面積	1377.233786
							面積	688.6168930
							(坪數)	(208.306)

* * 面積計算 (座標法) * *

地番 器械点	16-3 視準点	内角	方向角	距離	[1] X(i)	[2] Y(i)	[3] X(i+1)-X(i-1)	[2]*[3]
16-29	16-30	89-55-28	48-35-29	24.180	-61124.603	-87447.860	-5.799	507110.140140
16-30	16-5	90-00-46	318-36-15	29.347	-61108.610	-87429.725	38.008	-3323028.987800
16-5	16-6	89-12-55	227-49-10	24.150	-61086.595	-87449.131	5.799	-507117.510669
16-6	16-29	90-50-51	138-40-01	29.022	-61102.811	-87467.027	-38.008	3324446.762216
							倍面積	1410.403887
							面積	705.2019435
							(坪數)	(213.323)

* * 面積計算 (座標法) * *

地番 器械点	16-4 視準点	内角	方向角	距離	[1] X(i)	[2] Y(i)	[3] X(i+1)-X(i-1)	[2]*[3]
16-28	16-29	89-59-00	48-39-39	15.559	-61134.880	-87459.542	-11.348	992490.882616
16-29	16-6	90-00-22	318-40-01	29.022	-61124.603	-87447.860	32.069	-2804365.422340
16-6	16-7	89-06-41	227-46-42	11.116	-61102.811	-87467.027	14.322	-1252702.760694
16-7	16-8	180-09-42	227-56-24	4.439	-61110.281	-87475.259	-10.444	913591.604996
16-8	16-28	90-44-15	138-40-39	28.795	-61113.255	-87478.555	-24.599	2151884.974445
							倍面積	899.279023
							面積	449.6395115
							(坪數)	(136.015)

* * 面積計算 (座標法) * *

地番 : 16-5
器械点 視準点

内角	方向角	距離	[1] X(i)	[2] Y(i)	[3] X(i+1)-X(i-1)	[2]*[3]	
16-8 16-9	89-12-55	227-53-34	11.531	-61113.255	-87478.555	13.893	-1215339.564615
16-9 16-27	90-47-01	138-40-35	28.661	-61120.987	-87487.110	-29.256	2559522.890160
16-27 16-28	89-52-55	48-33-30	11.530	-61142.511	-87468.185	-13.893	1215195.494205
16-28 16-8	90-07-09	318-40-39	28.795	-61134.880	-87459.542	29.256	-2558716.360752
						倍面積	662.458998
						面積	331.2294990
						(坪数)	(100.196)

* * 面積計算 (座標法) * *

地番 : 16-6-1
器械点 視準点

内角	方向角	距離	[1] X(i)	[2] Y(i)	[3] X(i+1)-X(i-1)	[2]*[3]	
16-26 16-27	89-46-20	48-28-11	2.629	-61144.254	-87470.153	-19.768	1729109.984504
16-27 16-9	90-12-24	318-40-35	28.661	-61142.511	-87468.185	23.267	-2035122.260395
16-9 16-47	89-12-37	227-53-12	2.619	-61120.987	-87487.110	19.768	-1729445.190480
16-47 16-26	90-48-39	138-41-51	28.634	-61122.743	-87489.053	-23.267	2035607.796151
						倍面積	150.329780
						面積	75.1648900
						(坪数)	(22.737)

* * 面積計算 (座標法) * *

地番 : 16-6-2
器械点 視準点

内角	方向角	距離	[1] X(i)	[2] Y(i)	[3] X(i+1)-X(i-1)	[2]*[3]	
16-47 16-11	89-11-21	227-53-12	9.626	-61122.743	-87489.053	15.056	-1317235.181968
16-11 16-25	90-49-59	138-43-11	28.502	-61129.198	-87496.193	-27.874	2438868.883682
16-25 16-26	89-57-12	48-40-23	9.636	-61150.617	-87477.389	-15.056	1317059.568784
16-26 16-47	90-01-28	318-41-51	28.634	-61144.254	-87470.153	27.874	-2438143.044722
						倍面積	550.225776
						面積	275.1128880
						(坪数)	(83.221)

* * 面積計算 (座標法) * *

地番 : 16-7
器械点 視準点

内角	方向角	距離	[1] X(i)	[2] Y(i)	[3] X(i+1)-X(i-1)	[2]*[3]	
16-24 16-25	89-48-28	48-34-28	20.280	-61164.035	-87492.595	-7.839	685854.452205
16-25 16-11	90-08-43	318-43-11	28.502	-61150.617	-87477.389	34.837	-3047449.800593
16-11 16-12	89-11-14	227-54-25	20.259	-61129.198	-87496.193	7.839	-685882.656927
16-12 16-24	90-51-35	138-46-00	28.266	-61142.778	-87511.226	-34.837	3048628.580162
						倍面積	1150.574847
						面積	575.2874235
						(坪数)	(174.024)

* * 面積計算 (座標法) * *

地番 : 16-8
器械点 視準点

	内角	方向角	距離	[1] X(i)	[2] Y(i)	[3] X(i+1)-X(i-1)	[2]*[3]
16-24	90-09-51	318-46-00	28.266	-61164.035	-87492.595	42.583	-3725697.172885
16-12	89-05-30	227-51-30	1.517	-61142.778	-87511.226	20.239	-1771139.703014
16-13	180-08-48	228-00-18	30.815	-61143.796	-87512.351	-21.635	1893329.713885
16-49	90-35-51	138-36-09	27.925	-61164.413	-87535.253	-41.565	3638402.790945
16-50	90-00-00	48-36-09	32.250	-61185.361	-87516.787	0.378	-33081.345486
						倍面積	1814.283445
						面積	907.1417225
						(坪數)	(274.410)

* * 面積計算 (座標法) * *

地番 : 16-9
器械点 視準点

	内角	方向角	距離	[1] X(i)	[2] Y(i)	[3] X(i+1)-X(i-1)	[2]*[3]
16-49	89-24-09	228-00-18	7.371	-61164.413	-87535.253	16.016	-1401964.612048
16-15	90-18-11	138-18-29	2.855	-61169.345	-87540.731	-7.064	618387.723784
16-16	269-48-59	228-07-28	2.595	-61171.477	-87538.832	-3.864	338250.046848
16-17	91-08-04	139-15-32	0.400	-61173.209	-87540.764	-2.035	178145.454740
16-18	269-10-18	228-25-50	1.040	-61173.512	-87540.503	-0.993	86927.719479
16-19	89-27-49	137-53-39	10.097	-61174.202	-87541.281	-8.181	716175.219861
16-20	269-20-03	227-13-42	0.364	-61181.693	-87534.511	-7.738	677342.046118
16-21	82-53-03	130-06-45	14.624	-61181.940	-87534.778	-9.669	846873.768482
16-22	98-29-24	48-36-09	9.075	-61191.362	-87523.594	-3.421	299418.215074
16-50	90-00-00	318-36-09	27.925	-61185.361	-87516.787	26.949	-2358489.892863
						倍面積	565.689475
						面積	282.8447375
						(坪數)	(85.560)

* * 面積計算 (座標法) * *

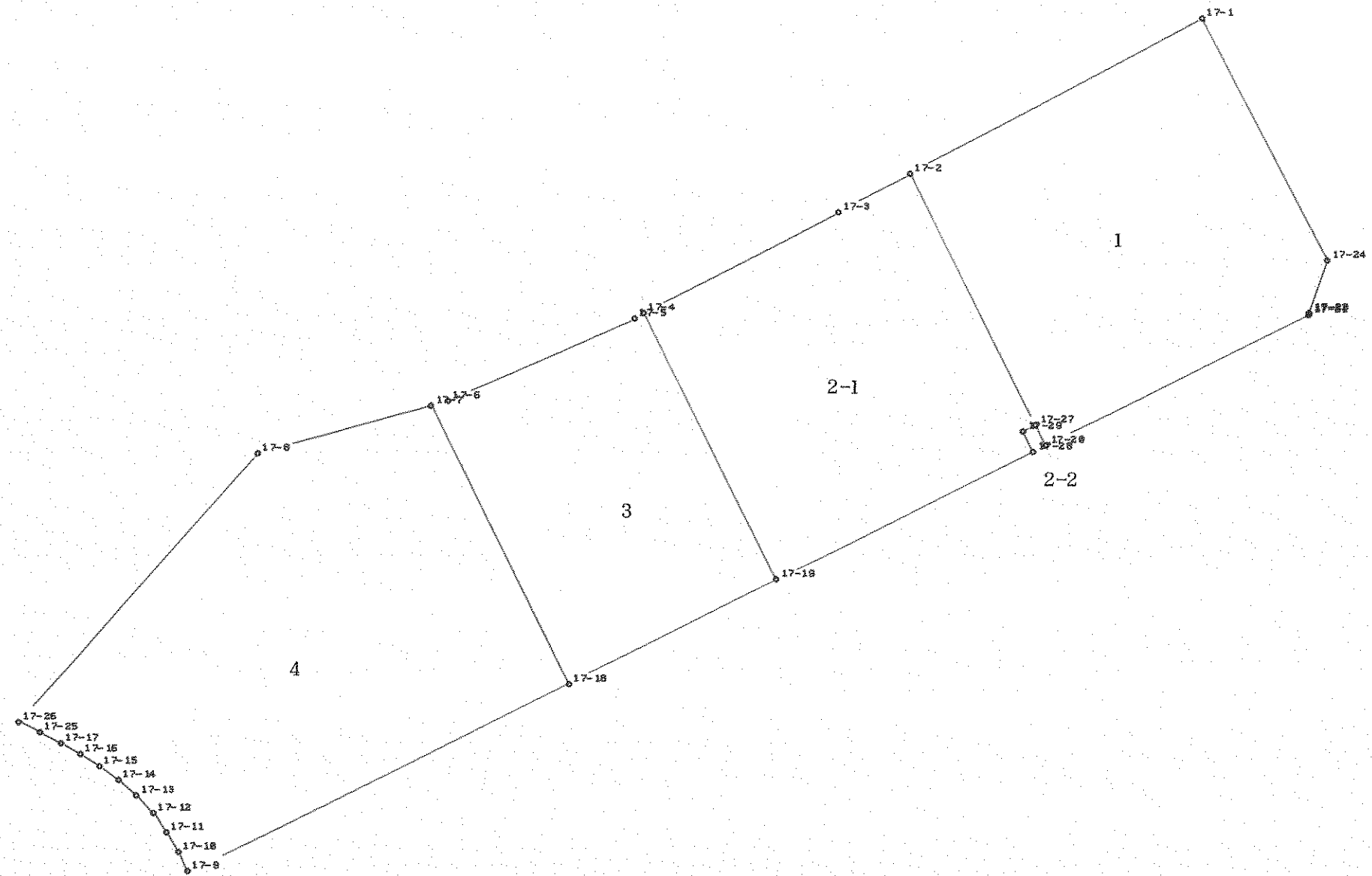
地番 : 16-10
器械点 視準点

	内角	方向角	距離	[1] X(i)	[2] Y(i)	[3] X(i+1)-X(i-1)	[2]*[3]
16-34	91-51-47	228-00-49	4.492	-61174.243	-87546.181	-0.948	82993.779588
16-35	178-56-31	226-57-20	7.916	-61177.248	-87549.520	-8.408	736116.364160
16-36	90-52-54	137-50-14	24.029	-61182.651	-87555.305	-23.214	2032508.850270
16-37	135-08-54	92-59-08	4.877	-61200.462	-87539.176	-18.065	1581395.214440
16-38	137-43-30	50-42-38	0.057	-61200.716	-87534.306	-0.218	19082.478708
16-44	263-35-57	134-18-35	0.059	-61200.680	-87534.262	-0.005	437.671310
16-45	94-17-58	48-36-33	13.367	-61200.721	-87534.220	8.797	-770038.533340
16-39	81-31-30	310-08-03	14.605	-61191.883	-87524.192	18.252	-1597491.552384
16-40	99-19-06	229-27-09	0.346	-61182.469	-87535.358	9.189	-804362.404662
16-41	268-22-02	317-49-11	10.565	-61182.694	-87535.621	7.604	-665620.862084
16-42	88-15-27	226-04-38	2.069	-61174.865	-87542.715	6.394	-559748.119710
16-43	270-04-24	316-09-02	2.852	-61176.300	-87544.205	0.622	-54452.495510
						倍面積	820.390786
						面積	410.1953930
						(坪數)	(124.084)

B - 17

画地面積成果表

街区番号	画地番号	面 積 m^2	摘 要	街区番号	画地番号	面 積 m^2	摘 要
B-17	1	777.13					
	2-1	685.68					
	2-2	2.40					
	3	530.54					
	4	1044.90					
計		3040.65					



* * 座 標 L I S T * * (現 場 N O . 1)

測点名	X 座 標	Y 座 標
17-1	-61186.742	-87559.693
17-2	-61206.487	-87580.824
17-3	-61211.328	-87585.985
17-4	-61224.282	-87600.164
17-5	-61224.880	-87600.790
17-6	-61236.131	-87614.608
17-7	-61236.914	-87615.937
17-8	-61244.906	-87629.459
17-9	-61281.643	-87626.005
17-10	-61280.297	-87627.207
17-11	-61278.888	-87628.670
17-12	-61277.581	-87630.164
17-13	-61276.399	-87631.976
17-14	-61275.513	-87633.859
17-15	-61274.788	-87635.767
17-16	-61274.187	-87637.690
17-17	-61273.676	-87639.599
17-18	-61257.097	-87598.156
17-19	-61243.750	-87583.011
17-20	-61226.363	-87563.307
17-21	-61209.380	-87544.028
17-22	-61209.292	-87544.034
17-23	-61209.224	-87543.964
17-24	-61204.417	-87543.678
17-25	-61273.235	-87641.612
17-26	-61272.798	-87643.619
17-27	-61224.863	-87564.629
17-28	-61227.158	-87564.208
17-29	-61225.657	-87565.529

* * 面積計算 (座標法) * *

地番 器械点	17-1 視準点	内角	方向角	距離	[1] X(i)	[2] Y(i)	[3] X(i+1)-X(i-1)	[2]*[3]
17-20	17-21	90-00-48	48-37-23	25.692	-61226.363	-87563.307	15.483	-1355742.682281
17-21	17-22	127-28-35	356-05-58	0.088	-61209.380	-87544.028	17.071	-1494464.101988
17-22	17-23	229-43-51	45-49-49	0.098	-61209.292	-87544.034	0.156	-13656.869304
17-23	17-24	137-34-29	3-24-18	4.816	-61209.224	-87543.964	4.875	-426776.824500
17-24	17-1	134-24-57	317-49-15	23.851	-61204.417	-87543.678	22.482	-1968156.968796
17-1	17-2	89-07-16	226-56-31	28.920	-61186.742	-87559.693	-2.070	181248.564510
17-2	17-27	91-40-04	138-36-35	24.493	-61206.487	-87580.824	-38.121	3338668.591704
17-27	17-20	180-00-00	138-36-35	2.000	-61224.863	-87564.629	-19.876	1740434.566004
							倍面積	1554.275349
							面積	777.1376745
							(坪數)	(235.084)

* * 面積計算 (座標法) * *

地番 器械点	17-2-1 視準点	内角	方向角	距離	[1] X(i)	[2] Y(i)	[3] X(i+1)-X(i-1)	[2]*[3]
17-2	17-3	88-13-22	226-49-57	7.076	-61206.487	-87580.824	13.535	-1185406.452840
17-3	17-4	180-45-09	227-35-06	19.205	-61211.328	-87585.985	-17.795	1558592.603075
17-4	17-19	91-01-56	138-37-02	25.947	-61224.282	-87600.164	-32.422	2840172.517208
17-19	17-28	89-57-26	48-34-28	25.077	-61243.750	-87583.011	-2.876	251888.739636
17-28	17-29	90-03-50	318-38-18	2.000	-61227.158	-87564.208	18.093	-1584299.215344
17-29	17-27	269-56-10	48-34-28	1.200	-61225.657	-87565.529	2.295	-200962.889055
17-27	17-2	90-02-07	318-36-35	24.493	-61224.863	-87564.629	19.170	-1678613.937930
							倍面積	1371.364750
							面積	685.6823750
							(坪數)	(207.418)

* * 面積計算 (座標法) * *

地番 器械点	17-2-2 視準点	内角	方向角	距離	[1] X(i)	[2] Y(i)	[3] X(i+1)-X(i-1)	[2]*[3]
17-20	17-27	90-02-07	318-36-35	2.000	-61226.363	-87563.307	2.295	-200957.789565
17-27	17-29	89-57-53	228-34-28	1.200	-61224.863	-87564.629	0.706	-61820.628074
17-29	17-28	90-03-50	138-38-18	2.000	-61225.657	-87565.529	-2.295	200962.889055
17-28	17-20	89-56-10	48-34-28	1.201	-61227.158	-87564.208	-0.706	61820.330848
							倍面積	4.802264
							面積	2.4011320
							(坪數)	(0.726)

* * 面積計算 (座標法) * *

地番 : 17-3
器械点 視準点

	内角	方向角	距離	[1] X(i)	[2] Y(i)	[3] X(i+1)-X(i-1)	[2]*[3]
17-4	87-41-36	226-18-38	0.866	-61224.282	-87600.164	18.870	-1653015.094680
17-5	184-32-10	230-50-48	17.819	-61224.880	-87600.790	-11.849	1037981.760710
17-6	188-38-54	239-29-42	1.543	-61236.131	-87614.608	-12.034	1054354.192672
17-7	79-07-31	138-37-13	26.898	-61236.914	-87615.937	-20.966	1836955.735142
17-18	89-59-26	48-36-39	20.187	-61257.097	-87598.156	-6.836	598820.994416
17-19	90-00-23	318-37-02	25.947	-61243.750	-87583.011	32.815	-2874036.505965
						倍面積	1061.082295
						面積	530.5411475
						(坪数)	(160.488)

* * 面積計算 (座標法) * *

地番 : 17-4
器械点 視準点

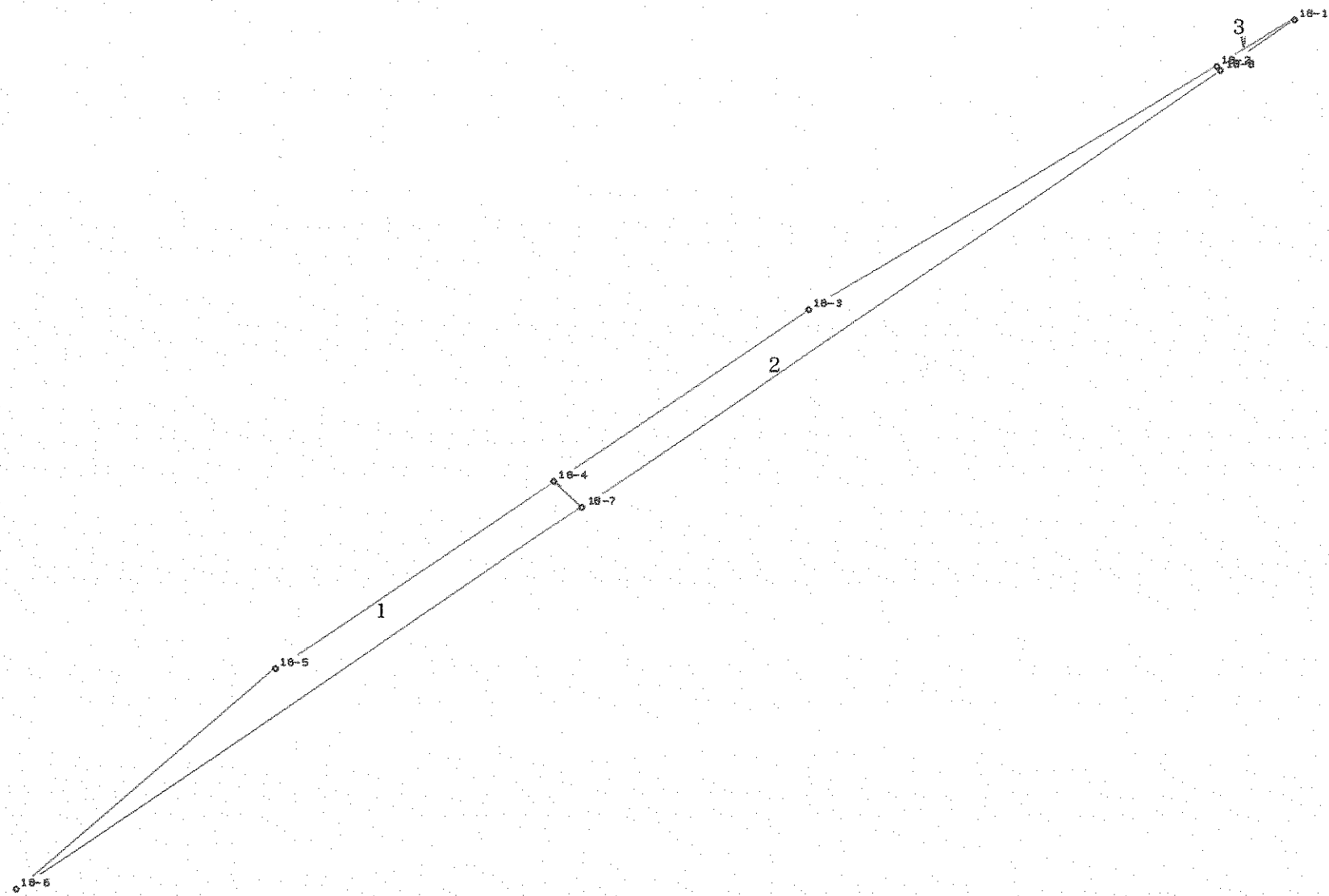
	内角	方向角	距離	[1] X(i)	[2] Y(i)	[3] X(i+1)-X(i-1)	[2]*[3]
17-7	100-47-42	239-24-55	15.707	-61236.914	-87615.937	12.191	-1068125.887967
17-8	147-30-01	206-54-56	31.280	-61244.906	-87629.459	-35.884	3144495.506756
17-26	75-22-05	102-17-01	2.054	-61272.798	-87643.619	-28.329	2482856.082651
17-25	180-04-24	102-21-25	2.061	-61273.235	-87641.612	-0.878	76949.335336
17-17	182-37-43	104-59-08	1.976	-61273.676	-87639.599	-0.952	83432.898248
17-16	182-22-13	107-21-21	2.015	-61274.187	-87637.690	-1.112	97453.111280
17-15	183-27-00	110-48-21	2.041	-61274.788	-87635.767	-1.326	116205.027042
17-14	184-23-32	115-11-53	2.081	-61275.513	-87633.859	-1.611	141178.146849
17-13	187-55-09	123-07-02	2.163	-61276.399	-87631.976	-2.068	181222.926368
17-12	188-03-48	131-10-50	1.985	-61277.581	-87630.164	-2.489	218111.478196
17-11	182-44-32	133-55-22	2.031	-61278.888	-87628.670	-2.716	237999.467720
17-10	184-18-43	138-14-05	1.805	-61280.297	-87627.207	-2.755	241412.955285
17-9	90-22-21	48-36-26	37.122	-61281.643	-87626.005	23.200	-2032923.316000
17-18	90-00-47	318-37-13	26.898	-61257.097	-87598.156	44.729	-3918177.919724
						倍面積	2089.812040
						面積	1044.9060200
						(坪数)	(316.084)

B - 18

画地面積成果表

街区番号	画地番号	面 積 <small>m²</small>	摘 要	街区番号	画地番号	面 積 <small>m²</small>	摘 要
B-18	1	5.07	保留地				
	2	5.42	保留地				
	3	0.06	保留地				
計		10.55					

B - 18



SCALE 1/100.000 ANGLE 23.000

* * 座 標 L I S T * * (現 場 N O . 1)

測 点 名	X 座 標	Y 座 標
18-1	-60936.148	-87854.260
18-2	-60937.330	-87855.129
18-3	-60943.539	-87859.691
18-4	-60947.722	-87862.417
18-5	-60952.309	-87865.398
18-6	-60957.244	-87867.851
18-7	-60947.933	-87861.834
18-8	-60937.352	-87855.040

* * 面積計算 (座標法) * *

地番 : 18-1
器械点 視準点

	内角	方向角	距離	[1] X(i)	[2] Y(i)	[3] X(i+1)-X(i-1)	[2]*[3]
18-6	6-26-29	32-52-18	11.086	-60957.244	-87867.851	4.376	-384509.715976
18-7	77-01-29	289-53-47	0.620	-60947.933	-87861.834	9.522	-836620.383348
18-4	103-07-22	213-01-09	5.471	-60947.722	-87862.417	-4.376	384485.936792
18-5	173-24-40	206-25-49	5.511	-60952.309	-87865.398	-9.522	836654.319756
						倍面積	10.157224
						面積	5.0786120
						(坪数)	(1.536)

* * 面積計算 (座標法) * *

地番 : 18-2
器械点 視準点

	内角	方向角	距離	[1] X(i)	[2] Y(i)	[3] X(i+1)-X(i-1)	[2]*[3]
18-7	102-48-28	32-42-15	12.574	-60947.933	-87861.834	10.370	-911127.218580
18-8	71-10-50	283-53-05	0.092	-60937.352	-87855.040	10.603	-931526.989120
18-2	112-25-17	216-18-22	7.705	-60937.330	-87855.129	-6.187	543559.683123
18-3	176-47-08	213-05-30	4.993	-60943.539	-87859.691	-10.392	913037.908872
18-4	76-48-17	109-53-47	0.620	-60947.722	-87862.417	-4.394	386067.460298
						倍面積	10.844593
						面積	5.4222965
						(坪数)	(1.640)

* * 面積計算 (座標法) * *

地番 : 18-3
器械点 視準点

	内角	方向角	距離	[1] X(i)	[2] Y(i)	[3] X(i+1)-X(i-1)	[2]*[3]
18-8	109-03-07	32-56-12	1.435	-60937.352	-87855.040	1.182	-103844.657280
18-1	3-23-11	216-19-23	1.467	-60936.148	-87854.260	0.022	-1932.793720
18-2	67-33-42	103-53-05	0.092	-60937.330	-87855.129	-1.204	105777.575316
						倍面積	0.124316
						面積	0.0621580
						(坪数)	(0.018)