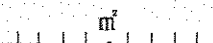
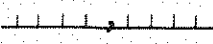
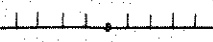
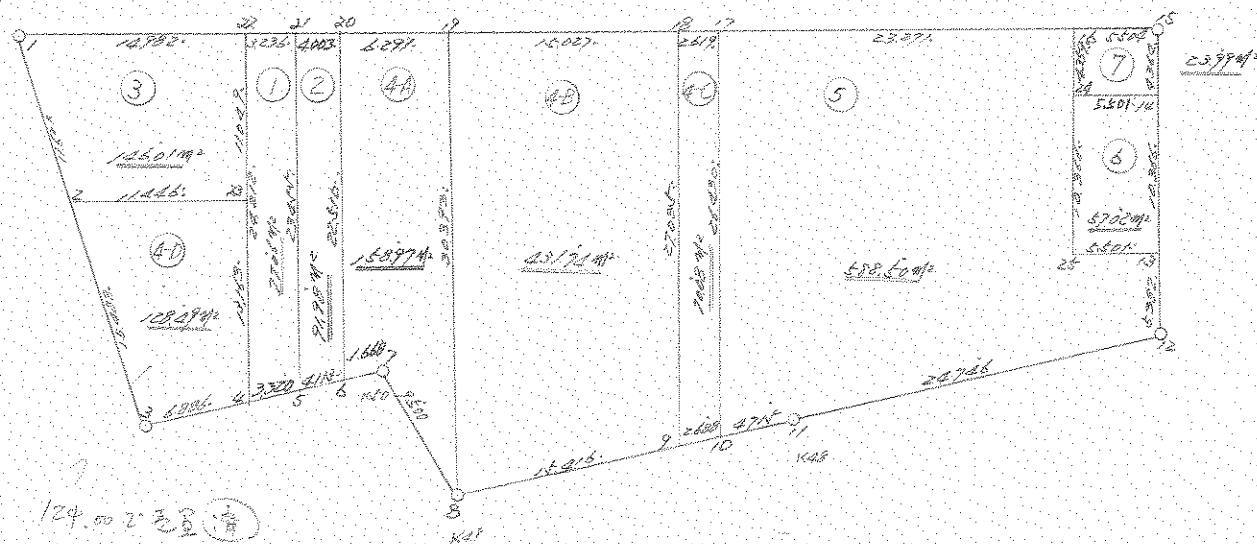


# 街 区 地 原 子 一 覽 表 ( 47 街 区 )



47  
街  
区

計算面積 =   
 角切面積 =   
 換地面積 = 



\*\*\* メンベリ ケイサシ ( )

NO	X	Y	DX	DY	D M D	2S	A	L
1294 ( 1 )	-63632.981	-90878.668						
1295 ( 2 )	-63644.010	-90882.267	-11.029	-3.599	-3.599	39.693371	198-04-21	11.601
1450 ( 3 )	-63658.743	-90887.043	-14.733	-4.776	-11.974	176.412942	197-57-40	15.488
1451 ( 4 )	-63661.376	-90880.680	-2.633	6.363	-10.387	27.348971	112-28-47	6.886
1452 ( 5 )	-63662.646	-90877.612	-1.270	3.068	-0.956	1.214120	112-29-14	3.320
1453 ( 6 )	-63664.218	-90873.811	-1.572	3.801	5.913	-9.295236	112-28-08	4.113
1372 ( 7 )	-63664.856	-90872.270	-0.638	1.541	11.255	-7.180690	112-29-25	1.668
1371 ( 8 )	-63674.299	-90873.310	-9.443	-1.040	11.756	-111.011908	186-17-06	9.500
1461 ( 9 )	-63680.370	-90859.140	-6.071	14.170	24.886	-151.082906	113-11-32	15.416
1462 ( 10 )	-63681.430	-90856.670	-1.060	2.470	41.526	-44.017560	113-13-36	2.688
1370 ( 11 )	-63683.285	-90852.335	-1.855	4.335	48.331	-89.654005	113-10-00	4.715
1454 ( 12 )	-63693.068	-90829.605	-9.783	22.730	75.396	-737.599068	113-17-13	24.746
1460 ( 13 )	-63688.700	-90826.460	4.368	3.145	101.271	442.351728	35-45-15	5.382
1459 ( 14 )	-63680.290	-90820.400	8.410	6.060	110.476	929.103160	35-46-32	10.366
1274 ( 15 )	-63676.750	-90817.848	3.540	2.552	119.088	421.571520	35-47-17	4.364
1275 ( 16 )	-63673.532	-90822.313	3.218	-4.465	117.175	377.069150	305-46-51	5.504
1276 ( 17 )	-63659.979	-90841.230	13.553	-18.917	93.793	1271.176529	305-37-10	23.271
1277 ( 18 )	-63658.431	-90843.343	1.548	-2.113	72.763	112.637124	306-13-36	2.619
1290 ( 19 )	-63649.646	-90855.534	8.785	-12.191	58.459	513.562315	305-46-37	15.027
1291 ( 20 )	-63645.966	-90860.636	3.680	-5.102	41.166	151.490880	305-48-09	6.291
1292 ( 21 )	-63643.628	-90863.885	2.338	-3.249	32.815	76.721470	305-44-20	4.003
			1.887	-2.629	26.937	50.830119	305-40-10	3.236

NO	X	Y	DX	DY	D M D	2S	A	L
1293 ( 22 )	-63641.741	-90866.514	8.760	-12.154	12.154	106.469040	305-46-56	14.982
1294 ( / )	-63632.981	-90878.668						

TOTAL  
2S 3547.811066  
S 1773.905533  
-----  
メータ 1773.905533 SQ METER  
536.606423 ヲホ"

\*\*\* マルチ ケイソウ ( 17-10 )

NO	X	Y	DX	DY	D M D	2S	A	L
1293 ( )	-63641.741	-90866.514						
			-19.635	-14.166	-14.166	278.149410	215-48-33	24.212
1451 ( )	-63661.376	-90880.680						
			-0.752	1.817	-26.515	19.939280	112-28-59	1.966
2594 ( )	-63662.128	-90878.863						
			19.271	13.904	-10.794	-208.011174	35-48-37	23.763
2593 ( )	-63642.857	-90864.959						
			1.116	-1.555	1.555	1.735380	305-39-59	1.914
1293 ( )	-63641.741	-90866.514						

TOTAL  
 2S 91.812896  
 S 45.906448  
 -----  
 マルチ 45.906448 / SQ METER  
 13.886700 ッホ"

\*\*\* マルチ ケイソウ ( 17-10 )

NO	X	Y	DX	DY	D M D	2S	A	L
2593 ( )	-63642.857	-90864.959						
			-19.271	-13.904	-13.904	267.943984	215-48-37	23.763
2594 ( )	-63662.128	-90878.863						
			-0.518	1.251	-26.557	13.756526	112-29-35	1.354
1452 ( )	-63662.646	-90877.612						
			19.018	13.727	-11.579	-220.209422	35-49-17	23.455
1292 ( )	-63643.628	-90863.885						
			0.771	-1.074	1.074	0.828054	305-40-25	1.322
2593 ( )	-63642.857	-90864.959						

TOTAL  
 2S 62.319142  
 S 31.159571  
 -----  
 マルチ 31.159571 / SQ METER  
 9.425770 ッホ"

\*\*\* メンピキ ケイサン ( 2 )

NO	X	Y	DX	DY	D M D	2S	A	L
1292 ( 2/ )	-63643.628	-90863.885						
			-19.018	-13.727	-13.727	261.060086	215-49-17	23.455
1452 ( ✓ )	-63662.646	-90877.612						
			-1.572	3.801	-23.653	37.182516	112-28-08	4.113
1453 ( 6 )	-63664.218	-90873.811						
			18.252	13.175	-6.677	-121.868604	35-49-24	22.510
1291 ( 20 )	-63645.966	-90860.636						
			2.338	-3.249	3.249	7.596162	305-44-20	4.003

TOTAL  
 2S 183.970160  
 S 91.985080  
 -----  
 メンピキ 91.985080 SQ METER  
 27.825486 ツホ"

\*\*\* メンピキ ケイサン ( 4-9 )

NO	X	Y	DX	DY	D M D	2S	A	L
1291 ( 20 )	-63645.966	-90860.636						
			-18.252	-13.175	-13.175	240.470100	215-49-24	22.510 ✓
1453 ( 6 )	-63664.218	-90873.811						
			-0.638	1.541	-24.809	15.828142	112-29-25	1.668 ✓
1372 ( 7 )	-63664.856	-90872.270						
			-9.443	-1.040	-24.308	229.540444	186-17-06	9.500 ✓
1371 ( 8 )	-63674.299	-90873.310						
			24.653	17.776	-7.572	-186.672516	35-47-36	30.393 ✓
1290 ( 19 )	-63649.646	-90855.534						
			3.680	-5.102	5.102	18.775360	305-48-09	6.291 ✓
1291 ( 20 )	-63645.966	-90860.636						

TOTAL  
 2S 317.941530  
 S 158.970765  
 -----  
 メンピキ 158.970765 SQ METER  
 48.088656 ツホ"

\*\*\* 2DPT 2172 ( 3 )

47

NO	X	Y	DX	DY	D M D	2S	A	L
1294 ( / )	-63632.981	-90878.668						
			-11.029	-3.599	-3.599	39.693371	198-04-21	11.601 /
1295 ( 2 )	-63644.010	-90882.267						
			-6.690	9.287	2.089	-13.975410	125-46-03	11.446 /
1455 ( 20 )	-63650.700	-90872.980						
			8.959	8.466	17.842	159.846478	35-49-09	11.049 /
1293 ( 22 )	-63641.741	-90866.514						
			8.760	-12.154	12.154	106.469040	305-46-56	14.982 /
1294 ( / )	-63632.981	-90878.668						

TOTAL  
 2S 292.033479  
 S 146.016739  
 -----  
 2DPT 146.016739 / SQ METER  
 44.170065 2m

\*\*\* 2DPT 2172 ( 4-A )

47

NO	X	Y	DX	DY	D M D	2S	A	L
1291 ( )	-63645.372	-90861.459						
			-10.447	-13.316	-13.316	245.640252	215-49-25	22.751
1453 ( )	-63663.819	-90874.775						
			-1.037	2.505	-24.127	25.019699	112-29-17	2.711
1372 ( )	-63664.856	-90872.270						
			-9.443	-1.040	-22.662	213.997266	106-17-06	9.500
1371 ( )	-63674.299	-90873.310						
			24.653	17.716	-5.926	-146.023078	35-47-36	30.393
1290 ( )	-63649.646	-90855.534						
			4.274	-5.925	5.925	25.323450	305-48-17	7.306
1291 ( )	-63645.372	-90861.459						

TOTAL  
 2S 363.886989  
 S 181.943494  
 -----  
 2DPT 181.943494 / SQ METER  
 55.037907 2m

\*\*\* 2254 3152 (4-B)

NO	X	Y	DX	DY	D M D	ZS	A	L	47
1290 ( 19 )	-63649.646	-90855.534	-24.653	-17.776	-17.776	436.231726	215-47-36	30.393 /	
1371 ( 8 )	-63674.299	-90873.310	-6.071	14.170	-21.382	129.810122	113-11-32	15.416 /	
1461 ( 9 )	-63680.370	-90859.140	21.939	15.797	8.585	188.346315	35-45-20	27.035 /	
1277 ( 18 )	-63658.431	-90843.343	8.785	-12.191	12.191	107.097935	305-46-37	15.027 /	
1290 ( 19 )	-63649.646	-90855.534							

TOTAL

ZS 863.486100  
S 431.743050

-----  
xDEF 431.743050 / SQ METER

130.602272 ㊦"

\*\*\* 2254 3152 (4-C)

NO	X	Y	DX	DY	D M D	ZS	A	L	47
1277 ( 18 )	-63658.431	-90843.343	-21.939	-15.797	-15.797	346.570383	215-45-20	27.035 /	
1461 ( 9 )	-63680.370	-90859.140	-1.060	2.470	-29.124	30.871440	113-13-36	2.688 /	
1462 ( 10 )	-63681.430	-90856.670	21.451	15.440	-11.214	-240.551514	35-44-44	26.430 /	
1276 ( 17 )	-63659.979	-90841.230	1.548	-2.113	2.113	3.270924	306-13-36	2.619 /	
1277 ( 18 )	-63658.431	-90843.343							

TOTAL

ZS 140.161233  
S 70.080616

-----  
xDEF 70.080616 / SQ METER

21.199386 ㊦"



\*\*\* POINT TABLE ( 4-D )

47

NO		X	Y	DX	DY	D M D	2S	A	L
1295	( 2 )	-63644.010	-90882.267						
				-14.733	-4.776	-4.776	70.364808	197-57-40	15.468
1450	( 3 )	-63658.743	-90887.043						
				-2.623	6.363	-3.189	8.396637	112-28-47	6.806
1451	( 4 )	-63661.376	-90880.600						
				10.676	7.700	10.874	116.090824	35-48-03	13.163
1455	( 20 )	-63650.700	-90872.980						
				8.690	-9.287	9.287	62.130030	305-46-03	11.446
1295	( 2 )	-63644.010	-90882.267						

TOTAL

2S 256.982299

S 128.491149

POINT 128.491149/ SC METER

38.668572 98"

\*\*\* POINT TABLE ( 5 )

47

NO		X	Y	DX	DY	D M D	2S	A	L
1276	( 17 )	-63659.979	-90841.230						
				-21.451	-15.440	-15.440	331.203440	215-44-44	26.430
1462	( 10 )	-63681.430	-90856.670						
				-1.655	4.335	-26.545	49.240975	113-10-00	4.715
1370	( 11 )	-63683.285	-90852.335						
				-9.783	22.730	0.520	-5.087160	113-17-13	24.746
1454	( 12 )	-63693.068	-90829.605						
				4.368	3.145	26.395	115.293360	35-45-15	5.382
1460	( 10 )	-63688.700	-90826.460						
				3.220	-4.460	25.080	80.757600	305-49-42	5.501
1458	( 25 )	-63685.480	-90830.920						
				8.410	6.060	26.680	224.378800	35-46-32	10.366
1457	( 24 )	-63677.070	-90824.860						
				3.538	2.547	35.287	124.845406	35-45-00	4.359
1275	( 16 )	-63673.532	-90822.313						
				13.553	-18.917	18.917	256.382101	305-37-10	23.271
1276	( 17 )	-63659.979	-90841.230						

TOTAL

2S 1177.014522

S 588.507261

POINT 588.507261/ SC METER

178.023446 98"



\*\*\* POINT LIST ( 6 )

NO	X	Y	DX	DY	D M D	ZS	A	L	47
1457 ( 24 )	-63677.070	-90824.860							
1450 ( 24 )	-63685.480	-90830.920	-8.410	-6.060	-6.060	50.984600	215-46-32	10.366	✓
1460 ( 14 )	-63688.700	-90826.460	-3.220	4.460	-7.660	24.665200	125-49-42	5.501	✓
1459 ( 14 )	-63680.290	-90820.400	8.410	6.060	2.860	24.052600	35-46-32	10.366	✓
1457 ( 24 )	-63677.070	-90824.860	3.220	-4.460	4.460	14.361200	305-49-42	5.501	✓

TOTAL  
 ZS 114.043600  
 S 57.021500  
 -----  
 POINT 57.021000 SQ METER  
 17.249094 ㎡

\*\*\* POINT LIST ( 7 )

NO	X	Y	DX	DY	D M D	ZS	A	L	47
1275 ( 16 )	-63673.532	-90822.313							
1457 ( 24 )	-63677.070	-90824.860	-3.538	-2.547	-2.547	9.011266	215-45-00	4.359	✓
1459 ( 14 )	-63680.290	-90820.400	-3.220	4.460	-0.634	2.041430	125-49-42	5.501	✓
1274 ( 14 )	-63676.750	-90817.046	3.540	2.552	6.376	22.576120	35-47-17	4.304	✓
1275 ( 16 )	-63673.532	-90822.313	3.218	-4.465	4.465	14.368370	305-46-51	5.504	✓

TOTAL  
 ZS 47.999256  
 S 23.999628  
 -----  
 POINT 23.999628 SQ METER  
 7.259887 ㎡