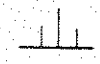
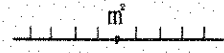
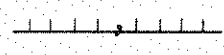

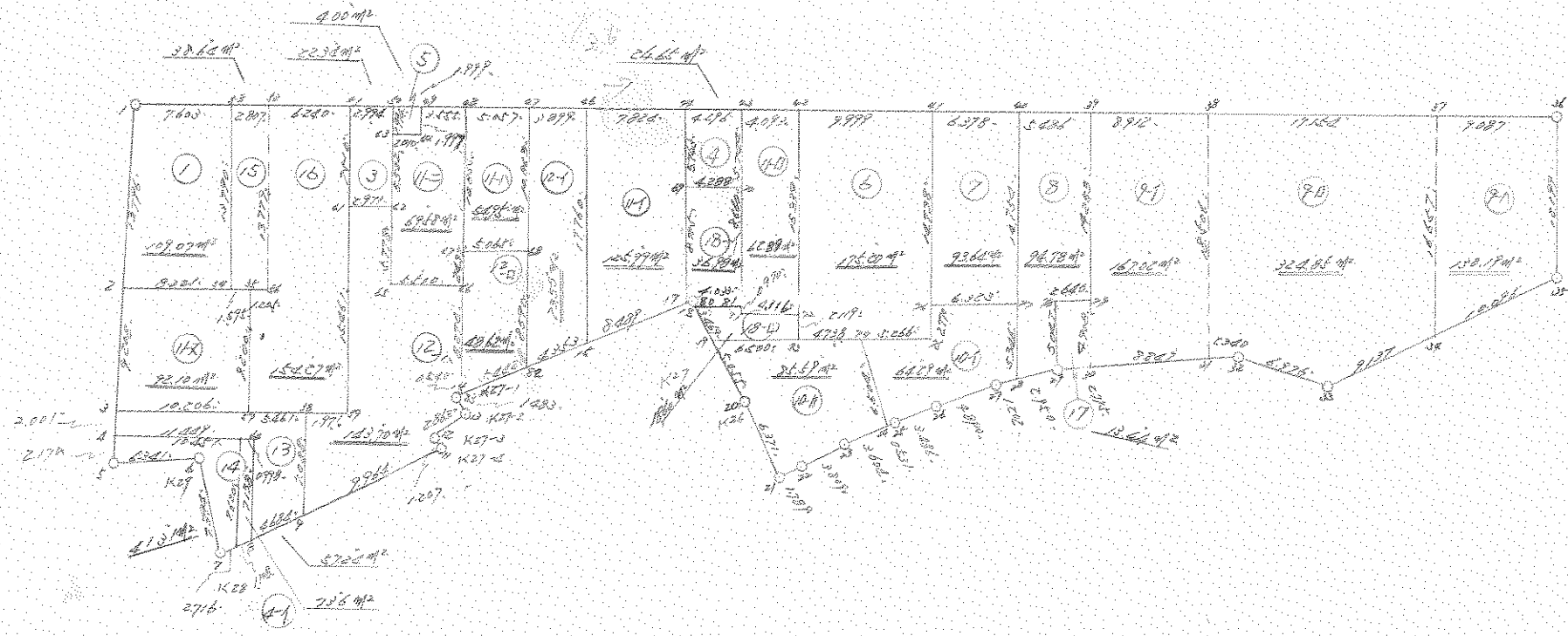


# 街 区 原 子 一 覽 表 ( 43 街 区 )



計算面積 =   
 角切面積 =   
 換地面積 = 



43  
街  
区

\*\*\* ヌルヒキ ケイソウ ( 200 )

NO	X	Y	DX	DY	D M D	2S	A	L
1237 ( )	-63787.277	-90664.251	-10.833	-8.543	-8.543	92.546319	218-15-35	13.796
1241 ( )	-63798.110	-90672.794	-7.235	-5.695	-22.781	164.820535	218-12-28	9.208
1298 ( )	-63805.345	-90678.489	-1.571	-1.239	-29.715	46.682265	218-15-42	2.001
1299 ( )	-63806.916	-90679.728	-1.698	-1.351	-32.305	54.853890	218-30-26	2.170
1439 ( )	-63808.614	-90681.079	-3.243	5.449	-28.207	91.475301	120-45-33	6.341
1349 ( )	-63811.857	-90675.630	-6.876	-2.720	-25.478	175.186728	201-34-58	7.394
1348 ( )	-63818.733	-90678.350	-0.465	2.676	-25.522	11.867730	99-51-28	2.716
1508 ( )	-63819.198	-90675.674	-0.189	1.092	-21.754	4.111506	99-49-09	1.108
1440 ( )	-63819.387	-90674.582	-0.801	4.615	-16.047	12.853647	99-50-47	4.684
1441 ( )	-63820.188	-90669.967	-1.703	9.817	-1.615	2.750345	99-50-29	9.964
1346 ( )	-63821.891	-90660.150	1.203	0.098	8.300	9.984900	4-39-26	1.207
1345 ( )	-63820.688	-90660.052	-0.115	2.861	11.259	-1.294785	92-18-07	2.863
1344 ( )	-63820.803	-90657.191	1.345	0.749	14.869	19.998805	29-06-45	1.539
1442 ( )	-63819.458	-90656.442	-1.218	5.304	20.922	-25.482996	102-55-59	5.442
1443 ( )	-63820.676	-90651.138	-0.975	4.242	30.468	-29.706300	102-56-39	4.353
1444 ( )	-63821.651	-90646.896	-1.901	8.273	42.983	-81.710683	102-56-28	8.489
1445 ( )	-63823.552	-90638.623	-0.047	0.206	51.462	-2.418714	102-51-08	0.211
1342 ( )	-63823.599	-90638.417	-0.041	-0.003	51.665	-2.118265	184-11-06	0.041
1466 ( )	-63823.640	-90638.420	-3.440	-0.450	51.212	-176.169280	187-27-10	3.469
1463 ( )	-63827.080	-90638.870	-5.015	-0.638	50.124	-251.371860	187-15-00	5.055
1341 ( )	-63832.095	-90639.508	-6.262	-1.175	48.311	-302.523482	190-37-39	6.371

12

NO	X	Y	DX	DY	D M D	2S	A	L
1212 ( )	-63838.357	-90640.683	-0.198	1.778	48.914	-9.684972	96-21-16	1.789
1213 ( )	-63838.555	-90638.905	-0.617	3.759	54.451	-33.596267	99-19-17	3.809
1214 ( )	-63839.172	-90635.146	-0.695	3.536	61.746	-42.913470	101-07-11	3.604
1215 ( )	-63839.867	-90631.610	-0.100	0.522	65.804	-6.580400	100-50-41	0.531
1216 ( )	-63839.967	-90631.088	-0.835	3.385	69.711	-58.208685	103-51-25	3.486
1217 ( )	-63840.802	-90627.703	-1.258	4.725	77.821	-97.898818	104-54-32	4.890
1218 ( )	-63842.060	-90622.978	-0.449	1.115	83.661	-37.563789	111-56-03	1.202
1230 ( )	-63842.509	-90621.863	-1.111	2.733	87.509	-97.222499	112-07-21	2.950
1231 ( )	-63843.620	-90619.130	-1.428	2.379	92.621	-132.262788	120-58-28	2.775
1232 ( )	-63845.048	-90616.751	-4.619	7.546	102.546	-473.659974	121-28-17	8.847
1233 ( )	-63849.667	-90609.205	-1.226	1.993	112.085	-137.416210	121-35-52	2.340
1234 ( )	-63850.893	-90607.212	-5.672	4.062	118.140	-670.090080	144-23-30	6.976
1235 ( )	-63856.565	-90603.150	-1.631	8.990	131.192	-213.974152	100-16-59	9.137
1236 ( )	-63858.196	-90594.160	-1.674	9.956	150.138	-251.331012	99-32-40	10.096
1191 ( )	-63859.870	-90584.204	9.895	7.135	167.229	1654.730955	35-47-39	12.199
1192 ( )	-63849.975	-90577.069	5.309	-7.375	166.989	886.544601	305-44-56	9.087
1193 ( )	-63844.666	-90584.444	10.007	-13.933	145.681	1457.829767	305-41-12	17.154
1197 ( )	-63834.659	-90598.377	5.203	-7.236	124.512	647.835936	305-43-04	8.912
1194 ( )	-63829.456	-90605.613	3.216	-4.445	112.831	362.864496	305-53-10	5.486
1195 ( )	-63826.240	-90610.058	3.722	-5.179	103.207	384.136454	305-42-13	6.378
1196 ( )	-63822.518	-90615.237	5.823	-8.129	89.899	523.481877	305-36-54	9.999

NO	X	Y	DX	DY	D M D	2S	A	L
1198 ( )	-63816.695	-90623.366	2.380	-3.330	78.440	186.687200	305-33-14	4.093
1199 ( )	-63814.315	-90626.696	2.505	-3.490	71.620	179.408100	305-40-10	4.296
1200 ( )	-63811.810	-90630.186	4.580	-6.344	61.786	282.979880	305-49-38	7.824
1438 ( )	-63807.230	-90636.530	2.282	-3.161	52.281	119.305242	305-49-35	3.899
1228 ( )	-63804.948	-90639.691	2.958	-4.102	45.018	133.163244	305-47-45	5.057
1229 ( )	-63801.990	-90643.793	2.080	-2.883	38.033	79.108640	305-48-34	3.555
1204 ( )	-63799.910	-90646.676	1.165	-1.625	33.525	39.056625	305-38-15	1.999
1202 ( )	-63798.745	-90648.301	1.748	-2.431	29.469	51.511812	305-43-04	2.994
1240 ( )	-63796.997	-90650.732	3.644	-5.066	21.972	80.065968	305-43-40	6.240
1239 ( )	-63793.353	-90655.798	1.648	-2.272	14.634	24.116832	305-57-19	2.807
1238 ( )	-63791.705	-90658.070	4.428	-6.181	6.181	27.369468	305-37-03	7.603
1237 ( )	-63787.277	-90664.251						

TOTAL  
 2S 4672.129587  
 S 2336.064793  
 -----  
 2336.064793 SQ METER  
 706.659600 ヲホ

\*\*\* POINT 7172 ( / )

43

NO		X	Y	DX	DY	D.H.D	2S	A	L
1237	( / )	-63767.277	-90664.251						
1241	( 2 )	-63796.110	-90672.794	-10.833	-8.543	-8.543	92.546319	213-15-35	13.790 ✓
1304	( 54 )	-63802.904	-90666.110	-4.794	6.676	-10.408	49.895952	125-40-26	8.221 ✓
1238	( 60 )	-63791.705	-90658.070	11.199	8.046	4.316	48.334364	35-41-44	13.790 ✓
1237	( / )	-63767.277	-90664.251	4.428	-6.181	6.181	27.369466	305-37-03	7.603 ✓

TOTAL  
 2S 218.146623  
 S 109.073311  
 -----  
 POINT 109.073311 ✓ SG METER  
 32.994676 VM"

\*\*\* POINT 7172 ( w )

43

NO		X	Y	DX	DY	D.H.D	2S	A	L
1240	( 51 )	-63796.997	-90650.732						
1207	( 61 )	-63803.092	-90655.120	-6.095	-4.388	-4.388	26.744860	215-45-05	7.510 ✓
1206	( 62 )	-63804.831	-90652.711	-1.739	2.409	-6.367	11.072213	125-49-29	2.971 ✓
1205	( 60 )	-63800.350	-90649.484	4.481	3.227	-0.731	-3.275611	35-45-35	5.522 ✓
1202	( 60 )	-63798.745	-90648.301	1.605	1.193	3.679	5.904795	35-23-34	1.994 ✓
1240	( 61 )	-63796.997	-90650.732	1.748	-2.431	2.431	4.249363	305-43-04	2.994 ✓

TOTAL  
 2S 44.695645  
 S 22.347822  
 -----  
 POINT 22.347822 ✓ SG METER  
 6.760216 VM"

\*\*\* 測点データ ( 4 )

43

NO	X	Y	DX	DY	D M D	2S	A	L
1200 ( 44 )	-63811.810	-90630.186	-4.658	-3.360	-3.360	15.650880	215-48-16	5.743
1437 ( 89 )	-63816.468	-90633.546	-2.501	3.483	-3.237	8.095737	125-40-50	4.288
1436 ( 70 )	-63818.969	-90630.063	4.654	3.367	3.613	16.814902	35-53-04	5.744
1199 ( 40 )	-63814.315	-90626.696	2.505	-3.490	3.490	8.742450	305-40-10	4.296
1200 ( 44 )	-63811.810	-90630.186						

TOTAL  
2S 49.303969  
S 24.651984  
-----  
測点 24.651984 / SQ METER  
7.457225 ヲホ

\*\*\* 測点 3192 ( 4 )

NO	X	Y	DX	DY	D.M.D	ZS	A	L
1206 ( )	-63811.810	-90630.186	-4.715	-3.401	-3.401	16.035715	215-48-13	5.814
1437 ( )	-63816.525	-90633.567	-2.509	3.494	-3.303	6.299772	125-40-54	4.302
1436 ( )	-63819.034	-90630.093	4.719	3.397	3.583	16.906177	35-44-54	5.815
1199 ( )	-63814.315	-90626.696	2.505	-3.490	3.490	6.742450	305-40-10	4.296
1200 ( )	-63811.810	-90630.186						

TOTAL  
 ZS 49.986114  
 S 24.993057  
 -----  
 測点 24.993057 SQ METER  
 7.560399 ㊦"

\*\*\* 測点 3193 ( 4 )

NO	X	Y	DX	DY	D.M.D	ZS	A	L
1202 ( 50 )	-63798.745	-90648.301	-1.605	-1.183	-1.183	1.898715	216-23-34	1.994
1205 ( 60 )	-63800.350	-90649.484	-1.174	1.632	-0.734	0.861736	125-43-47	2.010
1306 ( 64 )	-63801.524	-90647.852	1.614	1.176	2.074	3.347436	35-04-41	1.997
1204 ( 49 )	-63799.910	-90646.676	1.165	-1.625	1.625	1.693125	305-36-15	1.999
1202 ( 40 )	-63798.745	-90648.301						

TOTAL  
 ZS 8.000992  
 S 4.000496  
 -----  
 測点 4.000496 SQ METER  
 1.210150 ㊦"

\*\*\* メンピキ クイザン ( 4 )

NO	X	Y	DX	DY	D M D	2S	A	L
1198 ( 42 )	-63816.695	-90623.366						
			-12.441	-8.973	-8.973	111.633093	215-48-03	15.339
1435 ( 72 )	-63829.136	-90632.339						
			-1.719	-1.239	-19.185	32.979015	215-46-58	2.119
1227 ( 70 )	-63830.855	-90633.578						
			-2.782	3.835	-16.589	46.150598	125-57-29	4.738
1220 ( 74 )	-63833.637	-90629.743						
			-3.084	4.268	-8.486	26.170824	125-51-05	5.266
1221 ( 75 )	-63836.721	-90625.475						
			2.226	1.649	-2.569	-5.718594	36-31-51	2.770
1222 ( 76 )	-63834.495	-90623.826						
			11.977	8.589	7.669	91.851613	35-38-43	14.738
1196 ( 41 )	-63822.518	-90615.237						
			5.823	-8.129	8.129	47.335167	305-36-54	9.999
1198 ( 42 )	-63816.695	-90623.366						

TOTAL

2S 350.401716

S 175.200858

-----  
メンピキ 175.200858 SQ METER

52.998259 ヲホ



\*\*\* マルチ ケイソウ ( 7 )

43

NO	X	Y	DX	DY	D M D	2S	A	L
1196 ( 41 )	-63822.518	-90615.237	-11.977	-8.589	-8.589	102.870453	215-38-43	14.738
1222 ( 76 )	-63834.495	-90623.826	-3.703	5.125	-12.053	44.632259	125-50-58	6.323
1223 ( 77 )	-63838.198	-90618.701	11.958	8.643	1.715	20.507970	35-51-31	14.754
1195 ( 40 )	-63826.240	-90610.058	3.722	-5.179	5.179	19.276238	305-42-13	6.378
1196 ( 41 )	-63822.518	-90615.237						

TOTAL  
 2S 187.286920  
 S 93.643460  
 -----  
 マルチ 93.643460 SQ METER  
 28.327146 ユホ"

\*\*\* マルチ ケイソウ ( 8 )

43

NO	X	Y	DX	DY	D M D	2S	A	L
1195 ( 40 )	-63826.240	-90610.058	-11.958	-8.643	-8.643	103.352994	215-51-31	14.754
1223 ( 77 )	-63838.198	-90618.701	-4.311	-3.162	-20.448	88.151328	216-15-32	5.346
1230 ( 28 )	-63842.509	-90621.863	-1.111	2.733	-20.877	23.194347	112-07-21	2.950
1231 ( 29 )	-63843.620	-90619.130	4.032	3.036	-15.108	-60.915456	36-58-44	5.047
1313 ( 78 )	-63839.588	-90616.094	-1.466	2.196	-9.876	14.478216	123-43-34	2.640
1434 ( 79 )	-63841.054	-90613.898	11.598	8.285	0.605	7.016790	35-32-24	14.253
1194 ( 40 )	-63829.456	-90605.613	3.216	-4.445	4.445	14.295120	305-53-10	5.486
1195 ( 40 )	-63826.240	-90610.058						

TOTAL  
 2S 189.573339  
 S 94.786669  
 -----  
 マルチ 94.786669 SQ METER  
 28.672967 ユホ"

\*\*\* マルチ サイト ( 9-1 )

NO	X	Y	DX	DY	D M D	2S	A	L
1194 ( 67 )	-63829.456	-90605.613	-11.598	-8.285	-8.285	96.089430	215-32-24	14.253 ✓
1434 ( 77 )	-63841.054	-90613.898	-3.994	-2.853	-19.423	77.575462	215-32-21	4.908 ✓
1232 ( 80 )	-63845.048	-90616.751	-4.619	7.546	-14.730	68.037870	121-28-17	8.847 ✓
1233 ( 81 )	-63849.667	-90609.205	15.008	10.828	3.644	54.689152	35-48-35	18.506 ✓
1197 ( 88 )	-63834.659	-90598.377	5.203	-7.236	7.236	37.648908	305-43-04	8.912 ✓
1194 ( 67 )	-63829.456	-90605.613						

TOTAL

2S 334.040822

S 167.020411

-----  
マルチ 167.020411 SQ METER

50.523674 ツホ"

\*\*\* 9-9 ( 9-9 )

NO	X	Y	DX	DY	D.M.D	2S	A	L
1197 ( 8 )	-63834.659	-90598.377						
			-15.008	-10.628	-10.628	162.506624	215-48-35	16.508
1233 ( / )	-63849.667	-90609.205						
			-1.226	1.993	-19.603	24.106830	121-35-52	2.340
1234 ( 2 )	-63850.693	-90607.212						
			-5.672	4.082	-13.006	77.184576	144-23-30	6.976
1235 ( 3 )	-63856.555	-90603.150						
			-1.631	3.990	-0.556	0.906836	100-16-59	9.137
1236 ( 4 )	-63858.196	-90594.160						
			13.530	9.716	18.150	245.569500	35-40-57	16.657
1193 ( 7 )	-63844.666	-90584.444						
			10.007	-13.933	13.933	139.427531	305-41-12	17.154
1197 ( 8 )	-63834.659	-90598.377						

TOTAL  
 2S 649.701905  
 S 324.850952  
 -----  
 XCLT 324.850952 / SQ METER  
 98.267413 2M"

\*\*\* 9-8 ( 9-8 )

NO	X	Y	DX	DY	D.M.D	2S	A	L
1193 ( 7 )	-63844.666	-90584.444						
			-13.530	-9.716	-9.716	131.457480	215-40-57	16.657
1236 ( 4 )	-63856.196	-90594.160						
			-1.674	9.955	-9.476	15.862824	99-32-40	10.096
1191 ( 4 )	-63859.870	-90584.204						
			9.895	7.135	7.615	75.350425	35-47-39	12.199
1192 ( 6 )	-63849.975	-90577.069						
			5.309	-7.375	7.375	39.153875	305-44-56	9.067
1193 ( 7 )	-63844.666	-90584.444						

TOTAL  
 2S 261.824604  
 S 130.912302  
 -----  
 XCLT 130.912302 / SQ METER  
 39.000971 2M"

\*\*\* 2007 5112 ( 10-1 )

43

NO	X	Y	DX	DY	D M D	ZS	A	L
1220 ( 74 )	-63833.637	-90629.743	-6.230	-1.867	-1.867	11.631410	196-40-57	6.504 /
1215 ( 24 )	-63839.867	-90631.610	-0.100	0.522	-3.212	0.321200	100-50-41	0.531 /
1216 ( 25 )	-63839.967	-90631.088	-0.835	3.385	0.695	0.580325	103-51-25	3.436 /
1217 ( 26 )	-63840.802	-90627.703	-1.258	4.725	8.805	-11.078690	104-54-32	4.690 /
1213 ( 27 )	-63842.080	-90622.978	-0.449	1.115	14.645	-6.575605	111-56-03	1.202 /
1230 ( 28 )	-63842.509	-90621.663	4.311	3.162	18.922	81.572742	36-15-32	5.346 /
1223 ( 77 )	-63836.198	-90618.701	3.703	-5.125	16.959	62.799177	305-50-58	6.323 /
1222 ( 76 )	-63834.495	-90623.826	-2.226	-1.649	10.185	-22.671310	216-31-51	2.770 /
1221 ( 75 )	-63836.721	-90625.475	3.034	-4.268	4.268	13.162512	305-51-05	5.256 /
1220 ( 74 )	-63833.637	-90629.743						

TOTAL  
 ZS 128.502611  
 S 64.291305  
 -----  
 XDLT 64.291305 / SC METER  
 19.446119 5M

\*\*\* 2007 5112 ( 10-2 )

43

NO	X	Y	DX	DY	D M D	ZS	A	L
1463 ( 19 )	-63827.080	-90636.870	-5.015	-0.638	-0.638	3.199570	187-15-00	5.055
1341 ( 20 )	-63832.095	-90639.508	-6.262	-1.175	-2.451	15.348162	190-37-39	6.371
1212 ( 21 )	-63838.357	-90640.633	-0.198	1.778	-1.848	0.365904	96-21-16	1.789
1213 ( 22 )	-63838.555	-90638.905	-0.617	3.759	3.689	-2.276113	99-19-17	3.809
1214 ( 23 )	-63839.172	-90635.146	-0.695	3.536	10.984	-7.633880	101-07-11	3.604
1215 ( 24 )	-63839.867	-90631.610	6.230	1.867	16.387	102.091010	16-40-57	6.504
1220 ( 74 )	-63833.637	-90629.743	2.782	-3.835	14.419	40.113658	305-57-29	4.738
1227 ( 75 )	-63830.855	-90633.578	3.775	-5.292	5.292	19.977300	305-30-07	6.500
1463 ( 19 )	-63827.080	-90636.870						

TOTAL  
 ZS 171.185611  
 S 85.592805  
 -----  
 XDLT 85.592805 / SC METER  
 25.89823 5M

## \*\*\* メンピキ ケイサン ( // - □ )

NO	X	Y	DX	DY	D M D	2S	A	L
1199 ( 40 )	-63814.315	-90626.696						
1436 ( 70 )	-63818.969	-90630.063	-4.654	-3.367	-3.367	15.670018	215-53-04	5.744
1226 ( 81 )	-63825.985	-90635.139	-7.016	-5.076	-11.810	82.858960	215-53-07	8.660
1312 ( 71 )	-63826.719	-90635.671	-0.734	-0.532	-17.418	12.784812	215-56-04	0.907
1435 ( 72 )	-63829.136	-90632.339	-2.417	3.332	-14.618	35.331706	125-57-24	4.116
1198 ( 42 )	-63816.695	-90623.366	12.441	8.973	-2.313	-28.776033	35-48-03	15.339
1199 ( 40 )	-63814.315	-90626.696	2.380	-3.330	3.330	7.925400	305-33-14	4.093

TOTAL

2S 125.794863

S 62.897431

-----  
メンピキ 62.897431 SQ METER

19.026473 ッホ"

## \*\*\* メンピキ ケイサン ( // - イ )

NO	X	Y	DX	DY	D M D	2S	A	L
1438 ( 46 )	-63807.230	-90636.530						
1444 ( 14 )	-63821.651	-90646.896	-14.421	-10.366	-10.366	149.488086	215-42-33	17.760
1445 ( 17 )	-63823.552	-90638.623	-1.901	8.273	-12.459	23.684559	102-56-28	8.489
1437 ( 69 )	-63816.468	-90633.546	7.084	5.077	0.891	6.311844	35-37-43	8.715
1200 ( 44 )	-63811.810	-90630.186	4.658	3.360	9.328	43.449824	35-48-16	5.743
1438 ( 46 )	-63807.230	-90636.530	4.580	-6.344	6.344	29.055520	305-49-38	7.824

TOTAL

2S 251.989833

S 125.994916

-----  
メンピキ 125.994916 SQ METER

38.113462 ッホ"

\*\*\* メンピキ ケイサン ( /- ^ )

NO	X	Y	DX	DY	D M D	2S	A	L
1438 ( )	-63807.230	-90636.530	-14.421	-10.366	-10.366	149.488086	215-42-33	17.760
1444 ( )	-63821.651	-90646.896	-0.874	3.805	-16.927	14.794198	102-56-11	3.904
2602 ( )	-63822.525	-90643.091	13.188	9.480	-3.642	-48.030696	35-42-36	16.242
2601 ( )	-63809.337	-90633.611	2.107	-2.919	2.919	6.150333	305-49-21	3.600
1438 ( )	-63807.230	-90636.530						

TOTAL  
 2S 122.401921  
 S 61.200960

-----  
 メンピキ 61.200960 SQ METER  
 18.513290 ツホ"

\*\*\* メンピキ ケイサン ( /- ^ )

NO	X	Y	DX	DY	D M D	2S	A	L
2601 ( )	-63809.337	-90633.611	-13.188	-9.480	-9.480	125.022240	215-42-36	16.242
2602 ( )	-63822.525	-90643.091	-1.027	4.468	-14.492	14.883284	102-56-42	4.585
1445 ( )	-63823.552	-90638.623	7.084	5.077	-4.947	-35.044548	35-37-43	8.715
1437 ( )	-63816.468	-90633.546	4.658	3.360	3.490	16.256420	35-48-16	5.743
1200 ( )	-63811.810	-90630.186	2.473	-3.425	3.425	8.470025	305-49-51	4.224
2601 ( )	-63809.337	-90633.611						

TOTAL  
 2S 129.587421  
 S 64.793710

-----  
 メンピキ 64.793710 SQ METER  
 19.600097 ツホ"

\*\*\* メンピキ タイガシ ( / - ハ )

43

NO	X	Y	DX	DY	D M D	2S	A	L
1229 ( 48 )	-63801.990	-90643.793						
1311 ( 47 )	-63810.762	-90650.187	-8.772	-6.394	-6.394	56.088168	216-05-19	10.855
1446 ( 68 )	-63813.731	-90646.083	-2.969	4.104	-8.684	25.782796	125-53-01	5.065
1228 ( 47 )	-63804.948	-90639.691	8.783	6.392	1.812	15.914796	36-02-46	10.863
1229 ( 48 )	-63801.990	-90643.793	2.958	-4.102	4.102	12.133716	305-47-45	5.057

TOTAL

2S 109.919476

S 54.959738

-----  
メンピキ 54.959738 SQ METER

16.625320 ヲホ<sup>ハ</sup>

\*\*\* メソピキ ケイサツ ( // - ニ )

NO	X	Y	DX	DY	D M D	2S	A	L
1204 ( 49 )	-63799.910	-90646.676	-1.614	-1.176	-1.176	1.898064	216-04-41	1.997
1308 ( 64 )	-63801.524	-90647.852	1.174	-1.632	-3.984	-4.677216	305-43-47	2.010
1205 ( 60 )	-63800.350	-90649.484	-4.481	-3.227	-8.843	39.625483	215-45-35	5.522
1206 ( 62 )	-63804.831	-90652.711	-4.698	-3.364	-15.434	72.508932	215-36-16	5.778
1309 ( 65 )	-63809.529	-90656.075	-3.212	4.465	-14.333	46.037596	125-43-49	5.500
1310 ( 66 )	-63812.741	-90651.610	1.979	1.423	-8.445	-16.712655	35-43-05	2.437
1311 ( 67 )	-63810.762	-90650.187	8.772	6.394	-0.628	-5.508816	36-05-19	10.855
1229 ( 48 )	-63801.990	-90643.793	2.080	-2.883	2.883	5.996640	305-48-34	3.555
1204 ( 49 )	-63799.910	-90646.676						

TOTAL  
 2S 139.168028  
 S 69.584014  
 -----  
 メソピキ 69.584014 SQ METER  
 21.049164 ツボ"



\*\*\* 2011 2012 (1-2)

NO		X	Y	Z	2X	3Y	D 1 L	25	A
1241	( Z )	-53798.110	-90672.794						
1298	( W )	-63805.345	-90675.439	-7.235	-5.095	-5.095	41.203325	213-12-28	9.208 ✓
1464	( 57 )	-63811.300	-90676.200	-5.955	8.269	-3.101	18.466455	125-41-39	10.206 ✓
1305	( 54 )	-63803.636	-90664.622	7.464	5.378	10.566	78.864624	35-46-25	9.200 ✓
1304	( 54 )	-63802.904	-90666.116	0.932	-1.294	14.650	13.653300	305-45-48	1.595 ✓
1241	( Z )	-63798.110	-90672.794	4.794	-6.678	0.678	32.014332	305-40-26	8.221 ✓
1241	( )	-63798.110	-90672.794	0.000	0.000	0.000	0.000000	0-00-00	0.000

101.41  
 25 184.202536  
 S 92.101268  
 -----  
 2581 92.101268 ✓ SC MEIER  
 27.860633 1/4"

\*\*\* メンテ ケイソウ (12-1)

NO	X	Y	DX	DY	D M D	2S	A	L
1228 ( 47 )	-63804.948	-90639.691						
			-8.783	-6.392	-6.392	56.140936	216-02-46	10.863 ✓
1446 ( 48 )	-63813.731	-90646.083						
			-6.945	-5.055	-17.839	123.891855	216-02-58	8.590 ✓
1443 ( 82 )	-63820.676	-90651.138						
			-0.975	4.242	-18.652	18.185700	102-56-39	4.353 ✓
1444 ( 14 )	-63821.651	-90646.896						
			14.421	10.366	-4.044	-58.318524	35-42-33	17.760 ✓
1438 ( 46 )	-63807.230	-90636.530						
			2.282	-3.161	3.161	7.213402	305-49-35	3.899 ✓
1228 ( 47 )	-63804.948	-90639.691						

TOTAL  
 2S 147.113369  
 S 73.556684  
 -----  
 メンテ 73.556684 /SQ METER  
 22.250897 ユホ"

\*\*\* マルチ ケイラシ ( 12-0 )

NO	X	Y	DX	DY	D M D	2S	A	L
1311 ( 67 )	-63810.762	-90650.187						
1310 ( 66 )	-63812.741	-90651.610	-1.979	-1.423	-1.423	2.816117	215-43-05	2.437
1442 ( 14 )	-63819.458	-90656.442	-6.717	-4.832	-7.678	51.573126	215-43-48	8.274
1443 ( 82 )	-63820.676	-90651.138	-1.218	5.304	-7.206	8.776908	102-55-59	5.442
1446 ( 68 )	-63813.731	-90646.083	6.945	5.055	3.153	21.897585	36-02-58	8.590
1311 ( 67 )	-63810.762	-90650.187	2.969	-4.104	4.104	12.184776	305-53-01	5.065

TOTAL  
 2S 97.248512  
 S 48.624256  
 -----  
 マルチ 48.624256 / SQ METER  
 14.708837 ツボ"

NO	A	Y	DA	DI	LI	2S	A	L
1207 ( 6/ )	-63303.092	-90655.120	-12.541	-9.042	-9.042	113.395722	215-47-29	15.461 ✓
1307 ( 5P )	-63315.633	-90664.162	1.151	-1.600	-19.604	-22.656234	305-43-49	1.971 ✓
1296 ( 4P )	-63314.482	-90665.762	-5.706	-4.205	-25.489	145.440234	216-23-17	7.086 ✓
1441 ( P )	-63320.188	-90669.967	-1.703	9.817	-19.877	33.150531	99-50-29	9.964 ✓
1346 ( // )	-63321.891	-90660.350	1.203	0.098	-9.962	-11.984266	4-39-26	1.207 ✓
1345 ( 12 )	-63320.668	-90660.052	-0.115	2.881	-7.003	0.805345	92-18-07	2.863 ✓
1344 ( 10 )	-63320.803	-90657.191	1.466	0.223	-5.919	-5.745254	8-38-57	1.433 ✓
1343 ( 14 )	-63319.337	-90656.968	-0.121	0.526	-3.170	0.383570	102-57-17	0.540 ✓
1442 ( 20 )	-63319.450	-90653.442	6.717	4.632	2.188	14.696796	35-43-40	8.274 ✓
1310 ( 66 )	-63312.741	-90651.610	3.212	-4.405	2.555	8.206660	305-43-49	5.500 ✓
1309 ( 5P )	-63309.529	-90656.075	4.693	3.384	1.454	6.830892	35-36-16	5.773 ✓
1203 ( 2P )	-63304.031	-90652.711	1.739	-2.409	2.409	4.189251	305-49-29	2.971 ✓
1207 ( 6/ )	-63303.092	-90655.120						

TOTAL  
 2S 267.413177  
 S 143.706588  
 -----  
 2011 143.706588 / SQ METER  
 45.471243 2.88

\*\*\* メンキ クイソ ( 12-2 )

NO	X	Y	DX	DY	D M D	2S	A	L
1343 ( )	-63819.337	-90656.968						
1344 ( )	-63820.803	-90657.191	-1.466	-0.223	-0.223	0.326918	188-38-57	1.483
1442 ( )	-63819.458	-90656.442	1.345	0.749	0.303	0.407535	29-06-45	1.539
1343 ( )	-63819.337	-90656.968	0.121	-0.526	0.526	0.063646	282-57-17	0.540

TOTAL  
 2S 0.798099  
 S -0.399049  
 -----  
 メンキ 0.399049 SQ METER  
 0.120712 ツホ"

\*\*\* POINT 9192 ( W )

NO	X	Y	DX	DY	D M D	ZS	A	L
1298 ( W )	-63805.345	-90676.489						
1299 ( 4 )	-63806.916	-90679.728	-1.571	-1.239	-1.239	1.946469	218-15-42	2.001 ✓
1314 ( 60 )	-63813.586	-90670.423	-6.670	9.305	6.827	-45.536090	125-38-01	11.449 ✓
1440 ( 8 )	-63819.387	-90674.582	-5.801	-4.159	11.973	-69.455373	215-33-13	7.138 ✓
1441 ( P )	-63820.188	-90669.967	-0.801	4.615	12.429	-9.955629	99-50-47	4.084 ✓
1296 ( 58 )	-63814.482	-90665.762	5.706	4.205	21.249	121.246794	38-23-17	7.088 ✓
1464 ( 47 )	-63811.300	-90670.200	3.182	-4.438	21.016	66.872912	305-38-24	5.461 ✓
1296 ( W )	-63805.345	-90676.489	5.955	-8.209	8.269	49.380995	305-41-39	10.206 ✓

TOTAL

ZS 114.480078

S 57.240039

ADFT 57.240039 / SQ METER

17.315111 9M<sup>2</sup>

\*\*\* POINT 9192 ( A )

NO	X	Y	DX	DY	D M D	ZS	A	L
1299 ( )	-63806.916	-90679.728						
1439 ( )	-63806.614	-90681.079	-1.698	-1.351	-1.351	2.293998	218-30-26	2.170
1349 ( )	-63811.857	-90675.630	-3.243	5.449	2.747	-8.908521	120-45-33	6.341
1348 ( )	-63818.733	-90670.350	-6.876	-2.720	5.476	-37.652976	201-34-58	7.394
1440 ( )	-63819.387	-90674.582	-0.654	3.706	0.324	-4.266696	99-50-46	3.824
1314 ( )	-63813.586	-90670.423	5.601	4.159	14.451	83.830251	35-38-16	7.138
1299 ( )	-63806.916	-90679.728	6.670	-9.305	9.305	62.064350	305-38-01	11.449

TOTAL

ZS 97.360406

S 48.680203

ADFT 48.680203 / SQ METER

14.725761 9M<sup>2</sup>

\*\*\* メンピキ ケイサン ( 14-1 )

NO	X	Y	DX	DY	D M D	2S	A	L
1509 ( 24 )	-63813.005	-90671.234						
1508 ( 24 )	-63819.198	-90675.674	-6.193	-4.440	-4.440	27.496920	215-38-18	7.620 ✓
1440 ( 8 )	-63819.387	-90674.582	-0.189	1.092	-7.788	1.471932	99-49-09	1.108 ✓
1314 ( 60 )	-63813.586	-90670.423	5.801	4.159	-2.537	-14.717137	35-38-18	7.138 ✓
1509 ( 24 )	-63813.005	-90671.234	0.581	-0.811	0.811	0.471191	305-37-04	0.998 ✓

TOTAL  
 2S 14.722906  
 S 7.361453  
 -----  
 メンピキ 7.361453 SQ METER  
 2.226839 ツホ"

\*\*\* メンピキ ケイサン ( 14 )

NO	X	Y	DX	DY	D M D	2S	A	L
1299 ( 4 )	-63806.916	-90679.728						
1439 ( 4 )	-63808.614	-90681.079	-1.698	-1.351	-1.351	2.293998	218-30-26	2.170 ✓
1349 ( 6 )	-63811.857	-90675.630	-3.243	5.449	2.747	-8.908521	120-45-33	6.341 ✓
1348 ( 7 )	-63818.733	-90678.350	-6.876	-2.720	5.476	-37.652976	201-34-58	7.394 ✓
1508 ( 24 )	-63819.198	-90675.674	-0.465	2.676	5.432	-2.525880	99-51-28	2.716 ✓
1509 ( 60 )	-63813.005	-90671.234	6.193	4.440	12.548	77.709764	35-38-18	7.620 ✓
1299 ( 4 )	-63806.916	-90679.728	6.089	-8.494	8.494	51.719966	305-38-07	10.451 ✓

TOTAL  
 2S 82.636351  
 S 41.318175  
 -----  
 メンピキ 41.318175 SQ METER  
 12.498748 ツホ"

\*\*\* XDLT 0100 ( 15 )

43

NO		X	Y	DX	DY	D.H.D	ZS	A	L
1233	( 53 )	-63791.705	-90658.070						
				-11.189	-8.048	-8.048	90.107154	215-41-44	13.750 ✓
1304	( 54 )	-63802.904	-90666.116						
				-0.932	1.294	-14.798	13.791736	125-45-48	1.595 ✓
1305	( 55 )	-63803.836	-90664.822						
				-0.703	0.979	-12.525	8.805075	125-40-53	1.205 ✓
1306	( 56 )	-63804.539	-90663.843						
				11.186	8.045	-8.045	-39.162186	35-43-26	13.779 ✓
1239	( 52 )	-63793.353	-90655.798						
				1.648	-2.272	2.272	3.744256	305-57-19	2.807 ✓
1238	( 53 )	-63791.705	-90658.070						

TOTAL

ZS 77.236035  
S 38.643017

XDLT 38.643017 / SC METER

11.689512 Wm

\*\*\* XDLT 0100 ( 16 )

43

NO		X	Y	DX	DY	D.H.D	ZS	A	L
1239	( 52 )	-63793.353	-90655.798						
				-11.186	-8.045	-8.045	69.991370	215-43-26	13.779 ✓
1306	( 56 )	-63804.539	-90663.843						
				0.703	-0.979	-17.069	-11.999507	305-40-53	1.205 ✓
1305	( 55 )	-63803.836	-90664.822						
				-7.464	-5.378	-23.428	174.851664	215-46-25	9.200 ✓
1464	( 57 )	-63811.300	-90670.200						
				-3.102	4.438	-24.366	77.532612	125-38-24	5.461 ✓
1296	( 58 )	-63814.482	-90665.762						
				-1.151	1.600	-18.323	21.095528	125-43-49	2.971 ✓
1307	( 59 )	-63815.633	-90664.182						
				12.541	9.042	-7.686	-96.390126	35-47-29	15.461 ✓
1207	( 61 )	-63803.092	-90655.120						
				6.095	4.308	5.744	35.009680	35-45-05	7.510 ✓
1240	( 51 )	-63796.997	-90650.732						
				3.644	-5.066	5.066	18.460504	305-43-40	6.240 ✓
1239	( 52 )	-63793.353	-90655.798						

TOTAL

ZS 308.551725  
S 154.275862

XDLT 154.275862 / SC METER

46.668448 Wm



\*\*\* メンベキ ケイザン ( / 7 )

NO	X	Y	DX	DY	D M D	2S	A	L
1313 ( 78 )	-63839.588	-90616.094	-4.032	-3.036	-3.036	12.241152	216-58-44	5.047
1231 ( 29 )	-63843.620	-90619.130	-1.428	2.379	-3.693	5.273604	120-58-28	2.775
1232 ( 20 )	-63845.048	-90616.751	3.994	2.853	1.539	6.146766	35-32-21	4.908
1434 ( 79 )	-63841.054	-90613.898	1.466	-2.196	2.196	3.219336	303-43-34	2.640
1313 ( 78 )	-63839.588	-90616.094						

TOTAL  
 2S 26.880858  
 S 13.440429  
 -----  
 メンベキ 13.440429 SQ METER  
 4.065729 ツホ"

\*\*\* メンピキ ケイサン ( 18-1 )

NO	X	Y	DX	DY	D M D	2S	A	L
1437 ( 69 )	-63816.468	-90633.546						
			-7.084	-5.077	-5.077	35.965468	215-37-43	8.715
1445 ( 17 )	-63823.552	-90638.623						
			-0.047	0.206	-9.948	0.467556	102-51-08	0.211
1342 ( 18 )	-63823.599	-90638.417						
			-0.041	-0.003	-9.745	0.399545	184-11-06	0.041
1466 ( 80 )	-63823.640	-90638.420						
			-2.345	3.281	-6.467	15.165115	125-33-15	4.033
1226 ( 81 )	-63825.985	-90635.139						
			7.016	5.076	1.890	13.260240	35-53-07	8.660
1436 ( 70 )	-63818.969	-90630.063						
			2.501	-3.483	3.483	8.710983	305-40-50	4.288
1437 ( 69 )	-63816.468	-90633.546						

TOTAL  
 2S 73.968907  
 S 36.984453  
 -----  
 メンピキ 36.984453 SQ METER  
 11.187797 ツボ"

\*\*\* メンベキ ケイサシ ( /P-□ )

NO		X	Y	DX	DY	D M D	2S	A	L
1466	( 80 )	-63823.640	-90638.420						
				-3.440	-0.450	-0.450	1.548000	187-27-10	3.469
1463	( /P )	-63827.080	-90638.870						
				-3.775	5.292	4.392	-16.579800	125-30-07	6.500
1227	( 70 )	-63830.855	-90633.578						
				1.719	1.239	10.923	18.776637	35-46-58	2.119
1435	( 72 )	-63829.136	-90632.339						
				2.417	-3.332	8.830	21.342110	305-57-24	4.116
1312	( 7/ )	-63826.719	-90635.671						
				0.734	0.532	6.030	4.426020	35-56-04	0.907
1226	( 8/ )	-63825.985	-90635.139						
				2.345	-3.281	3.281	7.693945	305-33-15	4.033
1466	( 80 )	-63823.640	-90638.420						

TOTAL  
 2S 37.206912  
 S 18.603456  
 -----  
 メンベキ 18.603456 SQ METER  
 5.627545 ツホ"

1344E

\*\*\* メンピキ ケイザン ( )

NO	X	Y	DX	DY	D M D	2S	A	L
1343 ( )	-63819.337	-90656.968						
1344 ( )	-63820.803	-90657.191	-1.466	-0.223	-0.223	0.326918	188-38-57	1.483
1442 ( )	-63819.458	-90656.442	1.345	0.749	0.303	0.407535	29-06-45	1.539
1343 ( )	-63819.337	-90656.968	0.121	-0.526	0.526	0.063646	282-57-17	0.540

TOTAL

2S 0.798099

S -0.399049

-----  
メンピキ 0.399049 SQ METER

0.120712 ツホ"