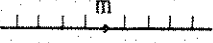


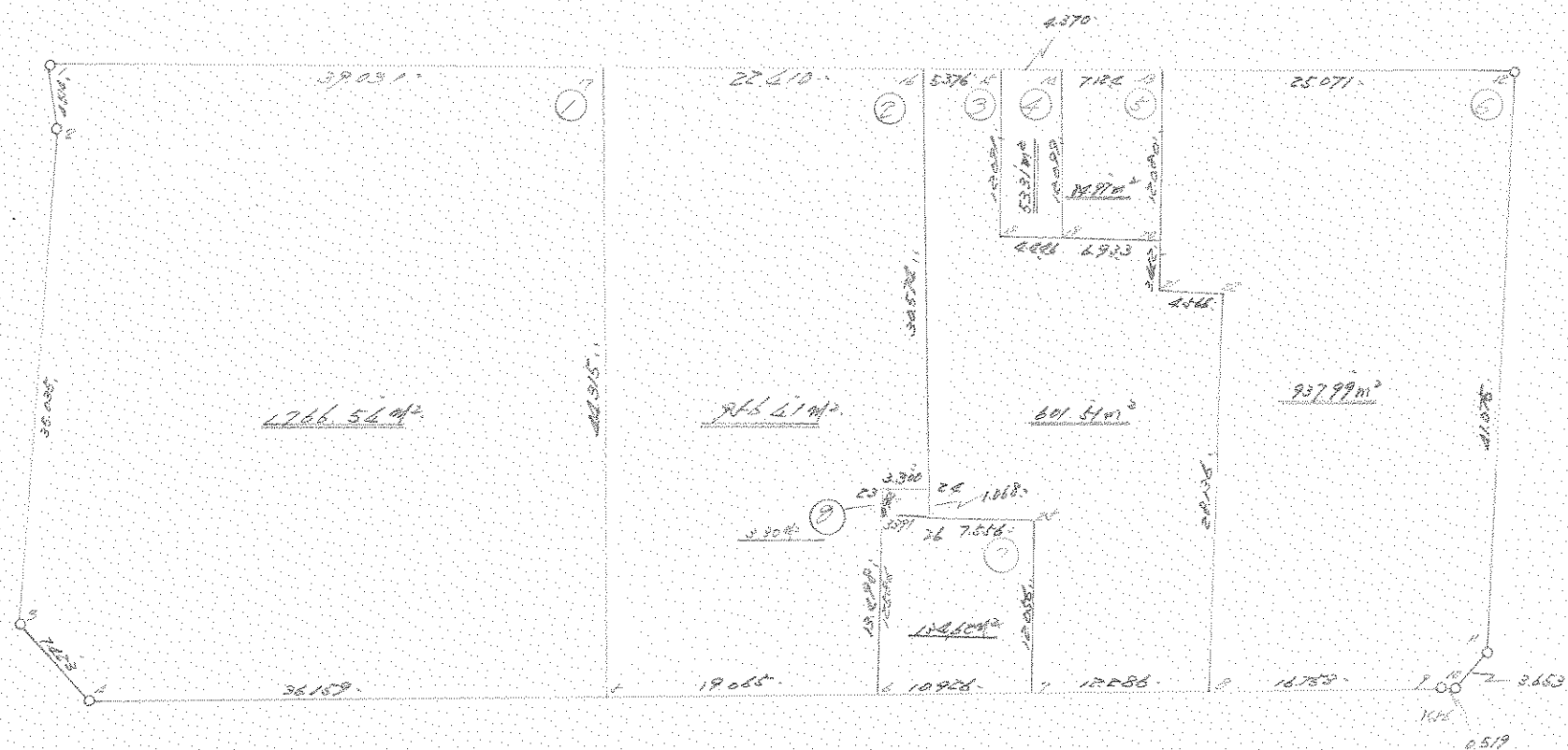


街画区地 原子一覽表 (41 街区)



計算面積 =  m²
 角切面積 = 
 換地面積 = 



41 街区

*** メンセキ ケイサン ()

NO	X	Y	DX	DY	D M D	2S	A	L
388 (/)	-63462.325	-90901.600						
			2.339	-3.862	-3.862	-9.033218	301-12-04	4.515
389 (2)	-63459.986	-90905.462						
			23.633	-25.864	-33.588	-793.785204	312-25-09	35.035
1165 (3)	-63436.353	-90931.326						
			-0.708	-7.389	-66.841	47.323428	264-31-36	7.423
1424 (4)	-63437.061	-90938.715						
			-28.795	-21.871	-96.101	2767.228295	217-13-05	36.159
1425 (5)	-63465.856	-90960.586						
			-15.182	-11.531	-129.503	1966.114546	217-13-02	19.065
1426 (6)	-63481.038	-90972.117						
			-8.701	-6.608	-147.642	1284.633042	217-12-54	10.926
1427 (7)	-63489.739	-90978.725						
			-9.784	-7.431	-161.681	1581.886904	217-13-01	12.286
1428 (8)	-63499.523	-90986.156						
			-13.341	-10.133	-179.245	2391.307545	217-13-05	16.753
1378 (9)	-63512.864	-90996.289						
			-0.415	-0.312	-189.690	78.721350	216-56-10	0.519
1160 (10)	-63513.279	-90996.601						
			-3.632	0.389	-189.613	688.674416	173-53-12	3.653
1161 (11)	-63516.911	-90996.212						
			-26.924	31.020	-158.204	4259.484496	130-57-24	41.075
319 (12)	-63543.835	-90965.192						
			19.774	15.413	-111.771	-2210.159754	37-56-06	25.071
394 (13)	-63524.061	-90949.779						
			5.615	4.385	-91.973	-516.428395	37-59-16	7.124
1152 (14)	-63518.446	-90945.394						
			3.446	2.688	-84.900	-292.565400	37-57-20	4.370
393 (15)	-63515.000	-90942.706						
			4.234	3.312	-78.900	-334.062600	38-02-02	5.376
392 (16)	-63510.766	-90939.394						
			17.680	13.770	-61.818	-1092.942240	37-54-47	22.410
1145 (17)	-63493.086	-90925.624						
			30.761	24.024	-24.024	-739.002264	37-59-22	39.031
388 (/)	-63462.325	-90901.600						

TOTAL
 2S 9077.394947
 S 4538.697473

 メンセキ 4538.697473 SQ METER
 1372.955985 ッホ"

*** メンピキ ケイサン (41-2)

NO	X	Y	DX	DY	D M D	2S	A	L
1425 ()	-63465.849	-90960.580						
			-15.189	-11.537	-11.537	175.235493	217-13-08	19.074
1426 ()	-63481.038	-90972.117						
			-8.724	10.300	-12.774	111.440376	130-15-51	13.498
1151 ()	-63489.762	-90961.817						
			-2.620	-2.006	-4.480	11.737600	217-26-22	3.300
1150 ()	-63492.382	-90963.823						
			-18.384	24.429	17.943	-329.864112	126-57-48	30.574
392 ()	-63510.766	-90939.394						
			17.693	13.780	56.152	993.497336	37-54-46	22.426
1145 ()	-63493.073	-90925.614						
			27.224	-34.966	34.966	951.914384	307-54-14	44.314
1425 ()	-63465.849	-90960.580						

TOTAL
 2S 1913.961077
 S 956.980538

 メンピキ 956.980538 SQ METER
 289.486612 ツボ"

*** メンピキ ケイサン (41-1)

NO	X	Y	DX	DY	D M D	2S	A	L
1165 ()	-63436.353	-90931.326						
			-0.708	-7.389	-7.389	5.231412	264-31-36	7.423
1424 ()	-63437.061	-90938.715						
			-28.788	-21.865	-36.643	1054.878684	217-13-02	36.150
1425 ()	-63465.849	-90960.580						
			-27.224	34.966	-23.542	640.907408	127-54-14	44.314
1145 ()	-63493.073	-90925.614						
			30.748	24.014	35.438	1089.647624	37-59-23	39.014
388 ()	-63462.325	-90901.600						
			2.339	-3.862	55.590	130.025010	301-12-04	4.515
389 ()	-63459.986	-90905.462						
			23.633	-25.864	25.864	611.243912	312-25-09	35.035
1165 ()	-63436.353	-90931.326						

TOTAL
 2S 3531.934050
 S 1765.967025

 メンピキ 1765.967025 SQ METER
 534.205025 ツボ"

*** 2017 2192 (W)

41

NO		X	Y	DX	DY	D M D	2S	A	L
392	(16)	-63510.766	-90939.394						
				13.384	-24.429	-24.429	-449.102736	306-57-46	30.574
1150	(24)	-63492.352	-90963.823						
				0.615	-0.673	-49.731	-30.584565	305-09-43	1.068
1149	(26)	-63491.767	-90964.696						
				-5.792	-4.653	-55.457	321.206944	219-57-32	7.556
1143	(25)	-63497.559	-90969.549						
				7.820	-9.176	-69.466	-543.380520	310-26-13	12.056
1427	(8)	-63489.739	-90978.725						
				-9.784	-7.431	-86.093	842.333912	217-13-01	12.286
1428	(8)	-63499.523	-90986.156						
				-18.383	21.300	-72.224	1327.693792	130-47-45	28.136
1158	(21)	-63517.996	-90964.656						
				3.505	2.927	-47.997	-166.229465	39-51-54	4.566
1156	(21)	-63514.401	-90961.929						
				-2.131	2.703	-42.367	90.284077	128-15-06	3.442
1155	(20)	-63516.532	-90959.226						
				5.476	4.252	-35.412	-193.916112	37-49-43	6.933
1153	(19)	-63511.056	-90954.974						
				3.501	2.741	-28.419	-99.494919	38-03-29	4.446
1154	(18)	-63507.555	-90952.233						
				-7.445	-9.527	-16.151	120.244195	128-00-23	12.091
393	(15)	-63515.000	-90942.706						
				4.234	3.312	-3.312	-14.023008	38-02-02	5.376
592	(16)	-63510.766	-90939.394						

TOTAL
 2S 1203.031575
 S 601.515787

 2017 601.515787 SQ METER
 161.958525 2M²

*** 2017 2192 (4)

41

NO		X	Y	DX	DY	D M D	2S	A	L
393	(15)	-63515.000	-90942.706						
				7.445	-9.527	-9.527	-70.928515	308-00-23	12.091
1154	(18)	-63507.555	-90952.233						
				-3.501	-2.741	-21.795	76.304295	218-03-29	4.446
1153	(19)	-63511.056	-90954.974						
				-7.390	9.500	-14.956	110.524340	127-32-43	12.099
1152	(14)	-63516.446	-90945.394						
				3.446	2.688	-2.688	-9.262848	37-57-20	4.370
393	(15)	-63515.000	-90942.706						

TOTAL
 2S 106.637772
 S 53.318886

 2017 53.318886 SQ METER
 15.120963 2M²

*** 2213 3100 (✓)

NO		X	Y	DX	DY	D.M.D	ZS	A	L	41
1152	(14)	-63518.446	-90945.394	7.390	-9.580	-9.580	-70.796200	307-38-43	12.095	
1153	(1P)	-63511.056	-90954.974	-5.470	-4.252	-23.412	126.204112	217-49-43	6.933	
1155	(20)	-63516.532	-90959.226	-7.529	9.447	-18.217	137.155793	128-33-14	12.080	
394	(1W)	-63524.061	-90949.779	5.815	4.355	-4.355	-24.621775	37-59-16	7.124	

TOTAL
 ZS 169.941930
 S 84.970965

 >ZST 84.970965 SQ METER
 25.703716 2B"

*** 2214 3110 (✗)

NO		X	Y	DX	DY	D.M.D	ZS	A	L	41
394	(1W)	-63524.061	-90949.779	7.529	-9.447	-9.447	-71.126463	308-33-14	12.080	
1155	(20)	-63516.532	-90959.226	2.151	-2.703	-21.597	-46.023207	308-13-06	3.442	
1156	(21)	-63514.401	-90961.929	-3.505	-2.927	-27.227	95.430635	219-51-54	4.566	
1158	(22)	-63517.906	-90964.656	13.283	-21.300	-51.454	-945.878882	310-47-45	28.136	
1424	(8)	-63499.523	-90956.156	-13.341	-10.183	-82.887	1105.795467	217-13-05	16.753	
1376	(9)	-63512.864	-90996.289	-0.415	-0.312	-93.332	38.732780	218-56-10	0.519	
1160	(10)	-63523.279	-90996.601	-3.632	0.389	-93.255	338.702160	173-53-12	3.653	
1161	(11)	-63516.911	-90996.212	-26.924	31.020	-61.846	1665.141704	130-57-24	41.075	
319	(12)	-63543.835	-90965.192	19.774	15.413	-15.413	-304.776662	37-56-06	25.071	
394	(13)	-63524.061	-90949.779							

TOTAL
 ZS 1875.997532
 S 937.998766

 >ZST 937.998766 SQ METER
 263.944620 2B"

*** メンピキ ケイサツ (6-A)

NO	X	Y	DX	DY	D M D	2S	A	L
1428 ()	-63499.523	-90986.156						
1378 ()	-63512.864	-90996.289	-13.341	-10.133	-10.133	135.184353	217-13-05	16.753 ✓
1160 ()	-63513.279	-90996.601	-0.415	-0.312	-20.578	8.539870	216-56-10	0.519 ✓
1161 ()	-63516.911	-90996.212	-3.632	0.389	-20.501	74.459632	173-53-12	3.653 ✓
2606 ()	-63534.480	-90975.970	-17.569	20.242	0.130	-2.283970	130-57-23	26.803 ✓
2607 ()	-63515.593	-90960.417	18.887	15.553	35.925	678.515475	39-28-14	24.467 ✓
1156 ()	-63514.401	-90961.929	1.192	-1.512	49.966	59.559472	308-15-03	1.925 ✓
1158 ()	-63517.906	-90964.856	-3.505	-2.927	45.527	-159.572135	219-51-54	4.566 ✓
1428 ()	-63499.523	-90986.156	18.383	-21.300	21.300	391.557900	310-47-45	28.136 ✓

TOTAL

2S 1185.960597
S 592.980298

メンピキ 592.980298 SQ METER

179.376540 ツホ"

*** メンピキ ケイソク (4-B)

NO	X	Y	DX	DY	D M D	2S	A	L
2607 ()	-63515.593	-90960.417						
			-18.887	-15.553	-15.553	293.749511	219-28-14	24.467✓
2606 ()	-63534.480	-90975.970						
			-0.696	0.802	-30.304	21.091584	130-57-09	1.062✓
2604 ()	-63535.176	-90975.168						
			18.925	15.585	-13.917	-263.379225	39-28-19	24.516✓
2605 ()	-63516.251	-90959.583						
			0.658	-0.834	0.834	0.548772	308-16-20	1.062✓
2607 ()	-63515.593	-90960.417						

TOTAL
 2S 52.010642
 S 26.005321

 メンピキ 26.005321 SQ METER
 7.866609 ツホ"

*** メンピキ ケイソク (4-C)

NO	X	Y	DX	DY	D M D	2S	A	L
2605 ()	-63516.251	-90959.583						
			-18.925	-15.585	-15.585	294.946125	219-28-19	24.516✓
2604 ()	-63535.176	-90975.168						
			-8.659	9.976	-21.194	183.518846	130-57-27	13.210✓
319 ()	-63543.835	-90965.192						
			19.774	15.413	4.195	82.951930	37-56-06	25.071✓
394 ()	-63524.061	-90949.779						
			7.529	-9.447	10.161	76.502169	308-33-14	12.080✓
1155 ()	-63516.532	-90959.226						
			0.281	-0.357	0.357	0.100317	308-12-25	0.454✓
2605 ()	-63516.251	-90959.583						

TOTAL
 2S 638.019387
 S 319.009693

 メンピキ 319.009693 SQ METER
 96.500432 ツホ"

41

*** 測点データ (8)

NO	X	Y	DX	DY	D M D	2S	A	L
2603 ()	-63489.172	-90962.513						
1149 ()	-63491.767	-90964.696	-2.595	-2.183	-2.183	5.664885	220-04-18	3.391
1150 ()	-63492.382	-90963.823	-0.615	0.873	-3.493	2.148195	125-09-48	1.068
1151 ()	-63489.762	-90961.817	2.620	2.006	-0.614	-1.608680	37-26-22	3.300
2603 ()	-63489.172	-90962.513	0.590	-0.696	0.696	0.410640	310-17-17	0.912

TOTAL
 2S 6.615040
 S 3.307520

 測点 3.307520 SQ METER
 1.000524 ユニ

*** 測点データ (7)

NO	X	Y	DX	DY	D M D	2S	A	L
1426 ()	-63481.038	-90972.117						
1427 ()	-63489.739	-90978.725	-8.701	-6.608	-6.608	57.496208	217-12-54	10.926
1143 ()	-63497.559	-90969.549	-7.820	9.176	-4.040	31.592800	130-26-18	12.056
1149 ()	-63491.767	-90964.696	5.792	4.853	9.989	57.856288	39-57-32	7.556
2603 ()	-63489.172	-90962.513	2.595	2.183	17.025	44.179875	40-04-18	3.391
1426 ()	-63481.038	-90972.117	8.134	-9.604	9.604	78.118936	310-15-45	12.586

TOTAL
 2S 269.244107
 S 134.622053

 測点 134.622053 SQ METER
 40.723171 ユニ