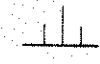
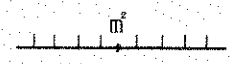
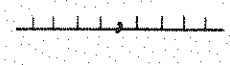

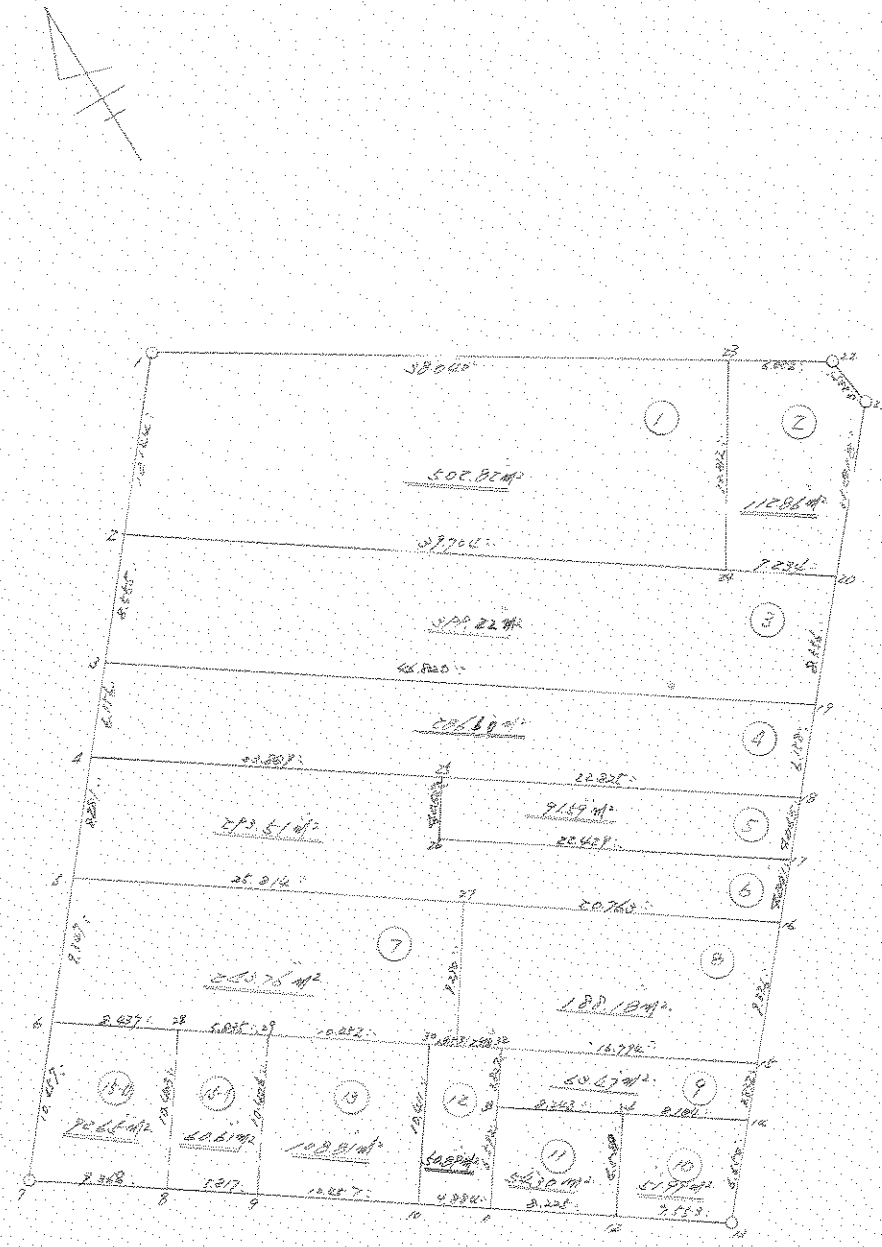


# 街 区 地 原 子 一 覽 表 ( 34 街 区 )



計算面積 =   
 角切面積 =   
 換地面積 = 



\*\*\* 3217 3192 ( )

NO		X	Y	DX	DY	D.L.D	ZS	A	L
628	( / )	-83679.478	-90692.968	-9.185	-7.944	-7.944	72.905640	220-51-22	12.144
629	( 2 )	-83683.661	-90700.912	-6.470	-5.597	-21.485	139.007950	220-51-44	8.555
676	( 6 )	-83695.151	-90708.569	-4.600	-4.023	-31.105	144.949300	220-48-15	6.150
677	( 4 )	-83699.751	-90710.552	-6.279	-5.299	-40.527	254.469030	220-41-26	8.281
678	( 5 )	-83700.070	-90715.531	-7.074	-6.109	-52.035	368.095590	220-48-46	9.347
679	( 6 )	-83713.144	-90722.040	-7.916	-6.832	-64.976	514.350010	220-47-46	10.457
666	( 7 )	-83721.080	-90728.872	-5.453	-7.617	-64.191	350.033520	125-35-56	9.368
667	( 8 )	-83726.513	-90721.255	-3.395	4.123	-51.851	176.034145	125-42-34	5.817
668	( 9 )	-83729.900	-90716.532	-6.107	5.486	-38.640	235.974430	125-44-04	10.457
646	( 10 )	-83736.015	-90708.044	-2.052	3.265	-26.187	74.685324	125-43-38	4.084
647	( 11 )	-83738.867	-90704.078	-4.812	6.070	-15.552	74.836224	125-48-20	8.225
648	( 12 )	-83743.679	-90697.409	-4.423	6.123	-2.759	12.203057	125-50-34	7.553
649	( 13 )	-83748.102	-90691.286	4.991	4.394	-7.758	38.720178	41-21-37	6.650
650	( 14 )	-83743.111	-90686.892	2.881	2.550	14.702	42.062422	41-42-36	3.832
651	( 15 )	-83740.250	-90684.342	6.989	6.212	23.464	163.520610	41-42-47	9.300
641	( 16 )	-83733.261	-90678.130	3.169	2.819	32.495	102.976655	41-39-17	4.241
642	( 17 )	-83730.112	-90675.311	3.040	2.659	38.013	115.559520	41-35-59	4.085
643	( 18 )	-83727.072	-90672.612	4.591	4.104	44.616	205.750250	41-47-39	6.150
644	( 19 )	-83722.451	-90668.508	6.392	5.687	54.607	349.047944	41-39-35	8.550
645	( 20 )	-83716.089	-90662.821	8.830	7.854	60.148	601.746840	41-39-07	11.818
607	( 21 )	-83707.259	-90654.967	3.207	-0.423	75.574	242.365818	352-23-54	3.235

NO		X	Y	DX	DY	L.H.B	ZS	A	L
001	22	-83704.052	-90655.385	3.752	-5.739	09.407	260.415064	303-10-32	6.857
002	20	-83700.300	-90661.134	20.824	-31.634	31.634	662.911216	303-11-26	38.040
020	/	-83679.476	-90692.568						

TOTAL  
 ZS 5202.660311  
 S 2601.340405  
 -----  
 XZS1 2601.340405 50 METER  
 706.905472 2A"

\*\*\* 2D 5100 ( / )

NO		X	Y	DX	DY	D.M.D	ZS	A	L
628	( / )	-63679.476	-90692.968	-9.105	-7.944	-7.944	72.965640	220-51-22	12.144 ✓
629	( 2 )	-63688.661	-90700.912	-23.200	32.221	16.333	-378.925600	125-45-18	39.704 ✓
908	( 24 )	-63711.661	-90668.691	11.561	-7.557	56.111	648.699271	33-10-16	15.812 ✓
609	( 20 )	-63700.300	-90661.134	20.824	-31.834	31.834	662.911216	303-11-26	38.040 ✓
628	( / )	-63679.476	-90692.968						

TOTAL  
 ZS 1005.650527  
 S 502.825263  
 -----  
 2D 5100 502.825263 / SQ METER  
 152.104642 DM<sup>3</sup>

\*\*\* 2D 5100 ( Z )

NO		X	Y	DX	DY	D.M.D	ZS	A	L
609	( 20 )	-63700.300	-90661.134	-11.561	-7.557	-7.557	87.366477	213-10-16	15.812 ✓
908	( 24 )	-63711.661	-90668.691	-4.226	5.870	-9.244	39.083632	125-45-51	7.234 ✓
645	( 20 )	-63716.089	-90662.821	8.830	7.254	4.480	39.558400	41-39-07	11.818 ✓
607	( 21 )	-63707.259	-90654.967	3.207	-0.423	11.906	38.132542	352-23-54	3.235 ✓
608	( 22 )	-63704.052	-90655.395	3.752	-5.739	5.739	21.532728	303-10-32	6.857 ✓
609	( 20 )	-63700.300	-90661.134						

TOTAL  
 ZS 225.723779  
 S 112.861889  
 -----  
 2D 5100 112.861889 / SQ METER  
 34.140721 DM<sup>3</sup>

\*\*\* 2024 2100 ( 3 )

34

NO		X	Y	DX	DY	D M D	ZS	A	L
625	( 2 )	-83600.661	-90700.912	-6.470	-5.597	-5.597	36.212590	220-51-44	6.555
676	( W )	-83695.131	-90700.509	-27.350	33.001	20.807	-733.171450	125-44-30	46.820
644	( 19 )	-83722.481	-90668.508	6.392	5.687	70.495	450.604040	41-35-35	6.556
645	( 20 )	-83716.039	-90662.621	4.228	-5.870	70.312	297.279136	305-45-51	7.234
908	( 24 )	-83711.061	-90668.691	23.200	-32.221	32.221	747.527200	305-45-13	39.704
629	( 2 )	-83600.661	-90700.912						

TOTAL  
 ZS 798.451516  
 S 399.225758  
 -----  
 2024 399.225758 / SQ METER  
 120.785791 ㎡

\*\*\* 2024 2150 ( 4 )

34

NO		X	Y	DX	DY	D M D	ZS	A	L
676	( W )	-83695.131	-90700.509	-4.660	-4.023	-4.023	13.747180	220-48-15	6.156
677	( 4 )	-83699.791	-90710.522	-13.952	19.391	11.345	-152.265440	125-44-07	23.089
620	( 24 )	-83713.743	-90691.141	-13.329	18.529	49.265	-656.653185	125-43-47	22.625
643	( 18 )	-83727.072	-90672.612	4.591	4.104	71.690	330.083710	41-47-39	6.150
644	( 19 )	-83722.481	-90668.508	27.350	-33.001	33.001	1039.327350	305-44-30	46.820
676	( W )	-83695.131	-90700.509						

TOTAL  
 ZS 573.219623  
 S 286.609811  
 -----  
 2024 286.609811 / SQ METER  
 86.899467 ㎡

\*\*\* 2007 9100 ( 5 )

NO		X	Y	DX	DY	D M D	ZS	A	L
826	( 26 )	-63713.743	-90691.141	-3.278	-2.382	-2.382	7.808196	216-00-16	4.052
827	( 26 )	-63717.021	-90693.523	-13.091	18.212	13.448	-176.047768	125-42-32	22.429
842	( 17 )	-63730.112	-90675.311	3.040	2.099	34.359	104.451360	41-35-59	4.065
843	( 18 )	-63727.072	-90672.612	13.329	-18.529	18.529	246.973041	305-43-47	22.825
826	( 26 )	-63713.743	-90691.141						

TOTAL  
 ZS 183.184829  
 S 91.592414  
 -----  
 2007 9100 91.592414 SQ METER  
 27.706705 9M<sup>2</sup>

\*\*\* 2007 9100 ( 6 )

NO		X	Y	DX	DY	D M D	ZS	A	L
877	( 4 )	-63699.791	-90710.532	-6.279	-5.399	-5.399	33.900321	220-41-26	8.281
878	( 4 )	-63706.070	-90715.931	-15.081	20.950	10.152	-153.102312	125-44-55	25.814
909	( 27 )	-63721.151	-90694.981	-12.150	16.851	47.953	-561.669890	125-44-52	20.763
841	( 16 )	-63733.231	-90675.130	3.169	2.019	67.623	214.297287	41-39-17	4.241
842	( 17 )	-63730.112	-90675.311	13.091	-18.212	52.230	683.742930	305-42-32	22.429
827	( 26 )	-63717.021	-90693.523	3.278	-2.382	36.400	119.319200	36-00-16	4.052
826	( 26 )	-63713.743	-90691.141	13.952	-19.391	19.391	270.543232	305-44-07	23.689
877	( 4 )	-63699.791	-90710.532						

TOTAL  
 ZS 587.050765  
 S 293.515384  
 -----  
 2007 9100 293.515384 SQ METER  
 28.788403 9M<sup>2</sup>

\*\*\* 欠付 7 ( 7 )

26-7 34

NO	X	Y	DX	DY	D M D	2S	A	L
678 ( ✓ )	-63706.070	-90715.931						
			-7.074	-6.109	-6.109	43.215066	220-48-48	9.347 ✓
679 ( 6 )	-63713.144	-90722.040						
			-4.920	6.854	-5.364	26.390880	125-40-19	6.437 ✓
910 ( 28 )	-63718.064	-90715.186						
			-3.403	4.740	6.230	-21.200690	125-40-33	5.835 ✓
814 ( 29 )	-63721.467	-90710.446						
			-6.101	8.487	19.457	-118.707157	125-42-40	10.452 ✓
815 ( 30 )	-63727.568	-90701.959						
			-1.123	1.551	29.495	-33.122885	125-54-23	1.915 ✓
816 ( 31 )	-63728.691	-90700.408						
			7.540	5.427	36.473	275.008420	35-44-42	9.290 ✓
909 ( 27 )	-63721.151	-90694.981						
			15.081	-20.950	20.950	315.946950	305-44-55	25.814 ✓
678 ( ✓ )	-63706.070	-90715.931						

TOTAL

2S 487.528584

S 243.764292

欠付 243.764292 / SQ METER

73.738698 ㎡

26-8

\*\*\* 欠付 8 ( 8 )

34

NO	X	Y	DX	DY	D M D	2S	A	L
909 ( 27 )	-63721.151	-90694.981						
			-7.540	-5.427	-5.427	40.919580	215-44-42	9.290 ✓
816 ( 31 )	-63728.691	-90700.408						
			-1.739	2.442	-8.412	14.628468	125-27-20	2.998 ✓
817 ( 32 )	-63730.430	-90697.966						
			-9.820	13.624	7.654	-75.162280	125-47-01	16.794 ✓
651 ( 14 )	-63740.250	-90684.342						
			6.969	6.212	27.490	191.577810	41-42-47	9.336 ✓
641 ( 16 )	-63733.281	-90678.130						
			12.130	-16.851	16.851	204.402630	305-44-52	20.763 ✓
909 ( 27 )	-63721.151	-90694.981						

TOTAL

2S 376.366208

S 188.183104

欠付 188.183104 / SQ METER

56.925388 ㎡

\*\*\* 測定データ ( 9 )

94-9

NO	X	Y	DX	DY	D M D	2S	A	L
817 ( 2 )	-63730.430	-90697.966	-3.088	-2.261	-2.261	6.981968	216-12-40	3.827
818 ( 6 )	-63733.518	-90700.227	-4.817	6.689	2.167	-10.438439	125-45-33	8.243
819 ( 4 )	-63738.335	-90693.538	-4.776	6.646	15.502	-74.037552	125-42-07	8.184
650 ( 14 )	-63743.111	-90686.892	2.881	2.550	24.698	70.660978	41-42-38	3.832
651 ( 14 )	-63740.250	-90684.342	9.820	-13.624	13.624	133.787680	305-47-01	16.794
817 ( 2 )	-63730.430	-90697.966						

34

TOTAL  
 2S 126.954635  
 S 63.477317  
 -----  
 測定 63.477317 / SQ METER  
 19.201888 ㎡

\*\*\* 測定データ ( 10 )

94-10

NO	X	Y	DX	DY	D M D	2S	A	L
819 ( 4 )	-63738.335	-90693.538	-5.344	-3.871	-3.871	20.686624	215-55-06	6.599
648 ( 12 )	-63743.679	-90697.409	-4.423	6.123	-1.619	7.160637	125-50-34	7.553
649 ( 10 )	-63748.102	-90691.236	4.991	4.394	8.898	44.409918	41-21-37	6.650
650 ( 14 )	-63743.111	-90686.892	4.776	-6.646	6.646	31.741296	305-42-07	8.184
819 ( 4 )	-63738.335	-90693.538						

34

TOTAL  
 2S 103.998675  
 S 51.999337  
 -----  
 測定 51.999337 / SQ METER  
 15.729799 ㎡



JK-11

\*\*\* 34 ( 11 )

NO		X	Y	DX	DY	D M D	2S	A	L	34
818	( 11 )	-63733.518	-90700.227							
				-5.349	-3.852	-3.852	20.604348	215-45-32	6.592	
647	( 11 )	-63738.867	-90704.079							
				-4.812	6.670	-1.034	4.975608	125-48-29	8.225	
648	( 12 )	-63743.679	-90697.409							
				5.344	3.871	9.507	50.805408	35-55-06	6.599	
819	( 11 )	-63738.335	-90693.538							
				4.817	-6.689	6.689	32.220913	305-45-33	8.243	
818	( 11 )	-63733.518	-90700.227							

TOTAL  
 2S 108.606277  
 S 54.303138  
 -----  
 34 54.303138 / SQ METER  
 16.426699 ユ

\*\*\* 34 ( 12 )

JK-12

NO		X	Y	DX	DY	D M D	2S	A	L	34
815	( 11 )	-63727.568	-90701.959							
				-3.447	-6.085	-6.085	51.399995	215-46-05	10.411	
646	( 11 )	-63736.015	-90708.044							
				-2.852	3.965	-8.205	23.400660	125-43-38	4.884	
647	( 11 )	-63738.867	-90704.079							
				5.349	3.852	-0.388	-2.075412	35-45-32	6.592	
818	( 11 )	-63733.518	-90700.227							
				3.088	2.261	5.725	17.878800	36-12-40	3.827	
817	( 12 )	-63730.430	-90697.966							
				1.739	-2.442	-5.544	9.641016	305-27-20	2.998	
816	( 11 )	-63728.691	-90700.408							
				1.123	-1.551	1.551	1.741773	305-54-23	1.915	
815	( 11 )	-63727.568	-90701.959							

TOTAL  
 2S 101.786832  
 S 50.893416  
 -----  
 34 50.893416 / SQ METER  
 15.395258 ユ

\*\*\* 3DEF 5190 ( 10 )

NO	X	Y	DX	DY	D M D	2S	A	L	34
814 ( ep )	-63721.467	-90710.446	-8.441	-6.086	-6.086	51.371926	215-47-30	10.406	
668 ( p )	-63729.908	-90716.532	-6.107	8.468	-3.684	22.498188	125-44-04	10.457	
646 ( so )	-63736.015	-90708.044	8.447	6.085	10.889	91.979383	35-46-05	10.411	
815 ( wo )	-63727.568	-90701.959	6.101	-8.487	8.487	51.779187	305-42-40	10.452	
814 ( ep )	-63721.467	-90710.446							

TOTAL  
 2S 217.628684  
 S 108.814342  
 -----  
 3DEF 108.814342 / SQ METER  
 32.916338 9m

24-15-1

\*\*\* マルチサイト (15-1)

NO	X	Y	DX	DY	D M D	ZS	A	L	34
910 ( 28 )	-63718.064	-90715.186							
			-8.449	-6.069	-6.069	51.276981	215-41-24	10.403	
667 ( 8 )	-63726.513	-90721.255							
			-3.395	4.723	-7.415	25.173925	125-42-34	5.617	
668 ( 9 )	-63729.908	-90716.532							
			0.441	6.066	3.394	28.648754	35-47-30	10.406	
814 ( 21 )	-63721.467	-90710.446							
			3.403	-4.740	4.740	16.130220	305-40-33	5.835	
910 ( 28 )	-63718.064	-90715.186							

TOTAL  
 ZS 121.229880  
 S 60.614940  
 -----  
 マルチ 60.614940 SQ METER  
 18.336019 ユニ

24-15-2

\*\*\* マルチサイト (15-2)

NO	X	Y	DX	DY	D M D	ZS	A	L	34
679 ( 6 )	-63713.144	-90722.040							
			-7.916	-6.832	-6.832	54.082112	220-47-46	10.457	
666 ( 7 )	-63721.060	-90728.872							
			-5.453	7.617	-6.047	32.974291	125-35-56	9.368	
667 ( 8 )	-63726.513	-90721.255							
			8.449	6.069	7.639	64.541911	35-41-24	10.403	
910 ( 28 )	-63718.064	-90715.186							
			4.920	-6.854	6.854	33.721680	305-40-19	8.437	
679 ( 6 )	-63713.144	-90722.040							

TOTAL  
 ZS 185.319994  
 S 92.659997  
 -----  
 マルチ 92.659997 SQ METER  
 28.029649 ユニ