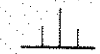
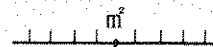
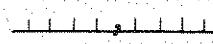
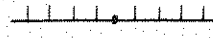
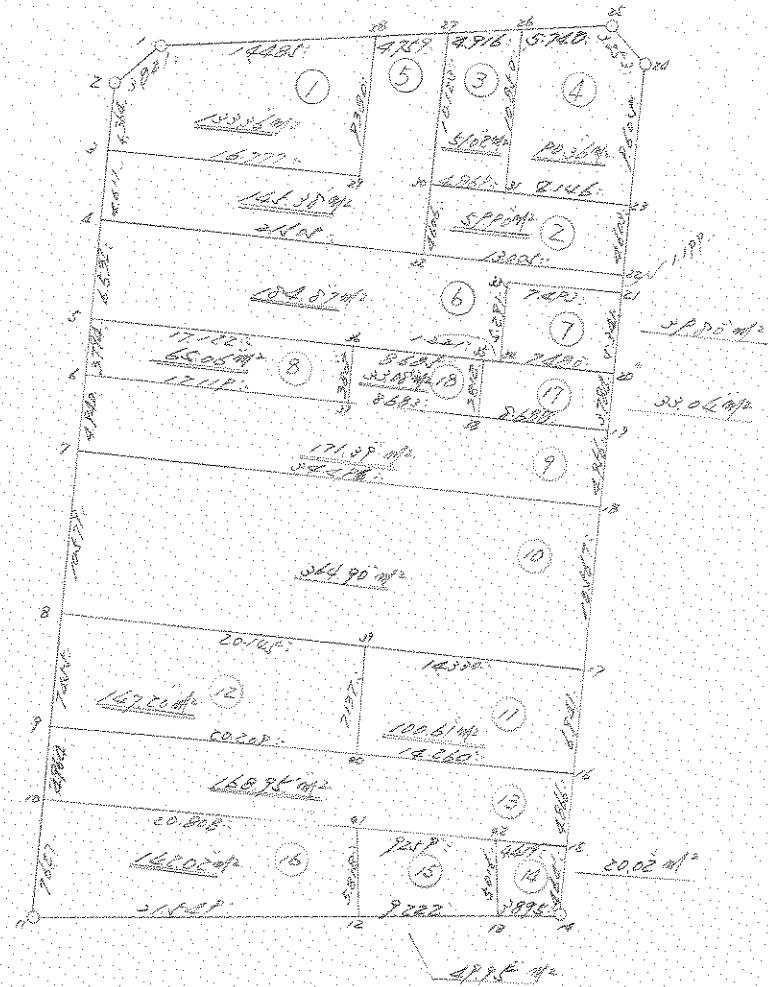


街 区 地 原 子 一 覽 表 (33 街 区)



計算面積 = 
 角切面積 = 
 換地面積 = 



*** メンモキ クイサン ()

NO	X	Y	DX	DY	D M D	2S	A	L
604 (/)	-63710.024	-90646.277						
605 (2)	-63710.511	-90650.067	-0.487	-3.790	-3.790	1.845730	262-40-40	3.821
636 (3)	-63713.775	-90652.963	-3.264	-2.896	-10.476	34.193664	221-34-52	4.364
606 (4)	-63717.220	-90656.028	-3.445	-3.065	-16.437	56.625465	221-39-34	4.611
637 (5)	-63722.097	-90660.374	-4.877	-4.346	-23.848	116.306696	221-42-18	6.532
638 (6)	-63724.933	-90662.894	-2.836	-2.520	-30.714	87.104904	221-37-25	3.794
639 (7)	-63728.615	-90666.188	-3.682	-3.294	-36.528	134.496096	221-49-00	4.940
640 (8)	-63736.526	-90673.211	-7.911	-7.023	-46.845	370.590795	221-35-50	10.579
652 (9)	-63742.082	-90678.182	-5.556	-4.971	-58.839	326.909484	221-49-09	7.455
653 (10)	-63745.782	-90681.492	-3.700	-3.310	-67.120	248.344000	221-48-56	4.964
654 (11)	-63751.477	-90686.566	-5.695	-5.074	-75.504	429.995280	221-41-59	7.627
610 (12)	-63764.062	-90669.074	-12.585	17.492	-63.086	793.937310	125-44-02	21.549
611 (13)	-63769.451	-90661.591	-5.389	7.483	-38.111	205.380179	125-45-37	9.222
612 (14)	-63771.723	-90658.427	-2.272	3.164	-27.464	62.398208	125-40-53	3.895
613 (15)	-63768.260	-90655.337	3.463	3.090	-21.210	-73.450230	41-44-32	4.641
614 (16)	-63764.623	-90652.105	3.637	3.232	-14.888	-54.147656	41-37-33	4.866
516 (17)	-63759.458	-90647.468	5.165	4.637	-7.019	-36.253135	41-55-00	6.941
517 (18)	-63751.569	-90640.438	7.889	7.030	4.648	36.668072	41-42-17	10.567
518 (19)	-63747.871	-90637.138	3.698	3.300	14.978	55.388644	41-44-42	4.956
519 (20)	-63745.055	-90634.611	2.816	2.527	20.805	58.586880	41-54-14	3.784
520 (21)	-63741.070	-90631.055	3.985	3.556	26.888	107.148680	41-44-38	5.341
			0.896	0.796	31.240	27.991040	41-37-04	1.199

NO		X	Y	DX	DY	D M D	2S	A	L
521	(22)	-63740.174	-90630.259	3.428	3.072	35.108	120.350224	41-51-54	4.603
522	(20)	-63736.746	-90627.187	7.177	6.384	44.564	319.835828	41-39-12	9.605
538	(24)	-63729.569	-90620.803	3.226	-0.421	50.527	163.000102	352-33-53	3.253
539	(26)	-63726.343	-90621.224	3.123	-4.816	45.290	141.440670	302-57-43	5.740
540	(26)	-63723.220	-90626.040	2.698	-4.109	36.365	98.112770	303-17-21	4.916
541	(27)	-63720.522	-90630.149	2.589	-3.993	28.263	73.172907	302-57-32	4.759
542	(28)	-63717.933	-90634.142	7.909	-12.135	12.135	95.975715	303-05-40	14.485
604	(/)	-63710.024	-90646.277						

TOTAL

2S 4001.948322

S 2000.974161

合計 2000.974161 SQ METER

605.294683 ヲホ"

*** 測定ポイント (/)

NO		X	Y	DX	DY	D M D	ZS	A	L
604 (/)		-63710.024	-90646.277						
				-0.487	-3.790	-3.790	1.845730	262-40-40	3.821
605 (2)		-63710.511	-90650.067						
				-3.264	-2.896	-10.476	34.193664	221-34-52	4.364
636 (4)		-63713.775	-90652.963						
				-11.134	12.550	-0.822	9.152148	131-34-43	16.777
902 (2P)		-63724.909	-90640.413						
				6.976	6.271	17.999	125.561024	41-57-13	9.380
542 (2B)		-63717.933	-90634.142						
				7.909	-12.135	12.135	95.975715	303-05-40	14.405
604 (/)		-63710.024	-90646.277						

TOTAL

ZS 266.728281
S 133.364140

測定 133.364140 SQ METER

40.342652 ㎡

*** 測定ポイント (2)

NO		X	Y	DX	DY	D M D	ZS	A	L
903 (1D)		-63728.073	-90636.891						
				-3.437	-3.067	-3.067	10.541279	221-44-39	4.606
832 (1C)		-63731.510	-90639.958						
				-3.664	9.699	3.565	-30.887160	131-46-27	13.005
521 (2Z)		-63740.174	-90630.259						
				3.428	3.072	16.336	55.999808	41-51-54	4.603
522 (2U)		-63736.746	-90627.187						
				5.426	-6.074	13.334	72.376952	311-47-07	8.146
904 (1I)		-63731.318	-90633.261						
				3.245	-3.630	3.630	11.779350	311-47-41	4.869
903 (1D)		-63728.073	-90636.891						

TOTAL

ZS 119.810229
S 59.905114

測定 59.905114 SQ METER

18.121297 ㎡

*** 測点位置 (①)

33

NO	X	Y	DX	DY	D M D	ZS	A	L
541 (27)	-63720.522	-90630.149						
903 (20)	-63728.073	-90636.891	-7.551	-6.742	-6.742	50.906842	221-45-38	10.123 /
904 (21)	-63731.318	-90633.261	-3.245	3.630	-9.854	31.976230	131-47-41	4.869 /
540 (26)	-63723.220	-90626.040	8.098	-7.221	0.997	8.073706	41-43-24	10.850 /
541 (27)	-63720.522	-90630.149	2.698	-4.109	4.109	11.086082	303-17-21	4.916 /

TOTAL

ZS 102.044860
S 51.022430

測点 51.022430 / SQ METER

15.434285 ㎡

*** 測点位置 (②)

33

NO	X	Y	DX	DY	D M D	ZS	A	L
540 (26)	-63723.220	-90626.040						
904 (21)	-63731.318	-90633.261	-8.098	-7.221	-7.221	58.475658	221-43-24	10.850 /
522 (20)	-63736.746	-90627.187	-5.428	6.074	-8.368	45.421504	131-47-07	6.146 /
538 (24)	-63729.569	-90620.803	7.177	6.384	4.090	29.353930	41-39-12	9.605 /
539 (25)	-63726.343	-90621.224	3.226	-0.421	10.053	32.430978	352-33-53	3.253 /
540 (26)	-63723.220	-90626.040	3.123	-4.816	4.816	15.040368	302-57-43	5.740 /

TOTAL

ZS 180.722438
S 90.361219

測点 90.361219 / SQ METER

27.334268 ㎡

*** 2017 5150 (5)

NO		X	Y	DX	DY	D M D	2S	A	L
542	(28)	-63717.933	-90634.142						
				-6.976	-6.271	-6.271	43.746496	221-57-13	9.380
902	(29)	-63724.909	-90640.413						
				11.134	-12.550	-25.092	-279.374328	311-34-43	16.777
636	(6)	-63713.775	-90652.963						
				-3.445	-3.065	-40.707	140.235615	221-39-34	4.611
606	(4)	-63717.220	-90656.028						
				-14.290	16.070	-27.702	395.861580	131-38-41	21.505
832	(22)	-63731.510	-90639.958						
				3.437	3.067	-3.565	-29.437905	41-44-39	4.606
903	(20)	-63728.073	-90636.891						
				7.551	6.742	1.244	9.393444	41-45-38	10.123
541	(27)	-63720.522	-90630.149						
				2.589	-3.993	3.993	10.337877	302-57-32	4.759

TOTAL
 2S 290.762779
 S 145.381389

 2017 145.381389 / SQ METER

*** 2017 5150 (6)

43.977870 2m

NO		X	Y	DX	DY	D M D	2S	A	L
606	(4)	-63717.220	-90656.028						
				-4.877	-4.346	-4.346	21.195442	221-42-18	6.532
637	(5)	-63722.097	-90660.374						
				-11.357	12.813	4.121	-46.802197	131-33-10	17.122
905	(26)	-63733.454	-90647.561						
				-5.762	6.439	23.433	-135.020948	131-33-36	8.605
835	(25)	-63739.216	-90641.062						
				-0.815	0.909	30.841	-25.135415	131-52-45	1.221
836	(24)	-63740.031	-90640.153						
				3.957	3.513	35.263	139.535691	41-35-54	5.291
837	(23)	-63736.074	-90636.640						
				-4.996	5.585	44.361	-221.627556	131-48-50	7.493
520	(21)	-63741.070	-90631.055						
				0.896	0.796	50.742	45.464832	41-37-04	1.199
521	(22)	-63740.174	-90630.259						
				8.664	-9.699	41.839	362.493096	311-46-27	13.005
832	(22)	-63731.510	-90639.958						
				14.290	-16.070	16.070	229.640300	311-38-41	21.505
606	(4)	-63717.220	-90656.028						

TOTAL
 2S 369.743247
 S 184.871623

 2017 184.871623 / SQ METER

55.923666 2m

*** 測点データ (7)

33

NO		X	Y	DX	DY	D M D	ZS	A	L
837	(W)	-63736.074	-90636.640						
				-3.957	-3.513	-3.513	13.900941	221-35-54	5.291
836	(W)	-63740.031	-90640.153						
				-5.024	5.542	-1.484	7.455616	132-11-36	7.480
519	(20)	-63745.055	-90634.611						
				3.985	3.556	7.614	30.341790	41-44-38	5.341
520	(21)	-63741.070	-90631.055						
				4.996	-5.585	5.585	27.902660	311-48-50	7.493
837	(W)	-63736.074	-90636.640						

TOTAL

ZS 79.601007
S 39.800503

測点 39.800503 / SQ METER

12.039652 ユニツ

*** 測点データ (8)

33

NO		X	Y	DX	DY	D M D	ZS	A	L
637	(V)	-63722.097	-90660.374						
				-2.836	-2.520	-2.520	7.146720	221-37-25	3.794
638	(V)	-63724.933	-90662.894						
				-11.365	12.802	7.762	-88.215130	131-35-50	17.119
906	(27)	-63736.298	-90650.092						
				2.844	2.531	23.095	65.682180	41-40-02	3.807
905	(26)	-63733.454	-90647.561						
				11.357	-12.813	12.813	145.517241	311-33-10	17.122
637	(V)	-63722.097	-90660.374						

TOTAL

ZS 130.131011
S 65.065505

測点 65.065505 / SQ METER

19.682315 ユニツ

*** 2003 0102 (9)

NO		X	Y	DX	DY	D M D	2S	A	L	33
638 (6)		-63724.933	-90662.894							
639 (7)		-63728.615	-90666.188	-3.682	-3.294	-3.294	12.128506	221-49-00	4.940	
517 (18)		-63751.569	-90640.438	-22.954	25.750	19.162	-439.844548	131-42-52	34.496	
518 (19)		-63747.671	-90637.138	3.698	3.300	48.212	178.287976	41-44-42	4.956	
834 (20)		-63742.062	-90643.598	5.809	-6.460	45.052	261.707068	311-57-46	8.688	
906 (27)		-63736.298	-90650.092	5.764	-6.494	32.098	185.012872	311-35-31	8.683	
638 (6)		-63724.933	-90662.894	11.365	-12.802	12.802	145.494730	311-35-50	17.119	

TOTAL
 2S 342.786606
 S 171.393303

 2004 171.393303 SQ METER
 51.846474 2A"

*** 2004 0102 (10)

NO		X	Y	DX	DY	D M D	2S	A	L	33
639 (7)		-63728.615	-90666.188							
640 (8)		-63736.526	-90673.211	-7.911	-7.023	-7.023	55.558953	221-35-50	10.579	
633 (29)		-63749.939	-90658.180	-13.413	15.031	0.985	-13.211805	131-44-40	20.145	
516 (17)		-63759.453	-90647.468	-9.519	10.712	26.723	-254.423832	131-37-31	14.330	
517 (18)		-63751.569	-90640.438	7.889	7.030	44.470	350.823830	41-42-17	10.567	
639 (7)		-63728.615	-90666.188	22.954	-25.750	25.750	591.065500	311-42-52	34.496	

TOTAL
 2S 729.812646
 S 364.906323

 2004 364.906323 SQ METER
 110.384162 2A"

*** 変位データ (//)

33

NO	X	Y	DX	DY	D M D	2S	A	L
833 (29)	-63749.939	-90658.180						
907 (40)	-63755.298	-90662.893	-5.359	-4.713	-4.713	25.256967	221-19-49	7.137
614 (16)	-63764.623	-90652.105	-9.325	10.788	1.362	-12.700650	130-50-23	14.260
516 (17)	-63759.456	-90647.468	5.165	4.637	16.787	86.704855	41-55-00	6.941
833 (29)	-63749.939	-90658.180	9.519	-10.712	10.712	101.967528	311-37-31	14.330

TOTAL

2S 201.228700
S 100.614350

変位 100.614350 SC METER

30.435840 寸

*** 変位データ (/2)

33

NO	X	Y	DX	DY	D M D	2S	A	L
640 (8)	-63736.526	-90673.211						
652 (9)	-63742.082	-90678.182	-5.556	-4.971	-4.971	27.618876	221-49-09	7.455
907 (40)	-63755.298	-90662.893	-13.216	15.289	5.347	-70.665952	130-50-26	20.209
833 (29)	-63749.939	-90658.180	5.359	4.713	25.349	135.845291	41-19-49	7.137
640 (8)	-63736.526	-90673.211	13.413	-15.031	15.031	201.610803	311-44-40	20.145

TOTAL

2S 294.409018
S 147.204509

変位 147.204509 SC METER

44.529363 寸

*** メンピキ ケイサク (/ W)

NO	X	Y	DX	DY	D M D	2S	A	L
652 (9)	-63742.082	-90678.182						
			-3.700	-3.310	-3.310	12.247000	221-48-56	4.964
653 (10)	-63745.782	-90681.492						
			-13.544	15.797	9.177	-124.293288	130-36-33	20.808
828 (41)	-63759.326	-90665.695						
			-6.041	7.017	31.991	-193.257631	130-43-32	9.259
829 (42)	-63765.367	-90658.678						
			-2.893	3.341	42.349	-122.515657	130-53-22	4.419
613 (15)	-63768.260	-90655.337						
			3.637	3.232	48.922	177.929314	41-37-33	4.866
614 (16)	-63764.623	-90652.105						
			9.325	-10.788	41.366	385.737950	310-50-23	14.260
907 (40)	-63755.298	-90662.893						
			13.216	-15.289	15.289	202.059424	310-50-26	20.209
652 (9)	-63742.082	-90678.182						

TOTAL

2S 337.907112

S 168.953556

メンピキ 168.953556 SQ METER

51.108450 ツホ"

*** メンピキ ケイソク (~~4~~)

NO	X	Y	DX	DY	D M D	2S	A	L
828 (42 41)	-63759.326	-90665.695	-4.736	-3.379	-3.379	16.002944	215-30-24	5.818 /
610 (4 12)	-63764.062	-90669.074	-5.389	7.483	0.725	-3.907025	125-45-37	9.222 /
611 (4 11)	-63769.451	-90661.591	4.084	2.913	11.121	45.418164	35-29-57	5.016 /
829 (4 22)	-63765.367	-90658.678	6.041	-7.017	7.017	42.389697	310-43-32	9.259 /
828 (42 41)	-63759.326	-90665.695						

TOTAL

2S	99.903780
S	49.951890

メンピキ	49.951890 / SQ METER
------	----------------------

	15.110446 ッホ"
--	---------------

*** メンピキ ケイソク (~~4~~)

NO	X	Y	DX	DY	D M D	2S	A	L
829 (42)	-63765.367	-90658.678	-4.034	-2.913	-2.913	11.896692	215-29-57	5.016 /
611 (4 10)	-63769.451	-90661.591	-2.272	3.164	-2.662	6.048064	125-40-53	3.895 /
612 (4)	-63771.723	-90658.427	3.463	3.090	3.592	12.439096	41-44-32	4.641 /
613 (4)	-63768.260	-90655.337	2.893	-3.341	3.341	9.665513	310-53-22	4.419 /
829 (42)	-63765.367	-90658.678						

TOTAL

2S	40.049365
S	20.024682

メンピキ	20.024682 / SQ METER
------	----------------------

	6.057466 ッホ"
--	--------------

*** 測点データ (16)

33

NO	X	Y	DX	DY	D M D	ZS	A	L
653 (10)	-63745.782	-90681.492						
654 (11)	-63751.477	-90686.566	-5.695	-5.074	-5.074	28.896430	221-41-59	7.627
610 (12)	-63764.062	-90669.074	-12.585	17.492	7.344	-92.424240	125-44-02	21.549
828 (41)	-63759.326	-90665.695	4.736	3.379	28.215	133.626240	35-30-24	5.818
653 (10)	-63745.782	-90681.492	13.544	-15.797	15.797	213.954588	310-36-33	20.808

TOTAL
 ZS 284.052998
 S 142.026499

 測点 142.026499 / SQ METER
 42.963015 ユヰ"

*** 測点データ (17)

33

NO	X	Y	DX	DY	D M D	ZS	A	L
835 (14)	-63739.216	-90641.062						
834 (14)	-63742.062	-90643.598	-2.846	-2.536	-2.536	7.217456	221-42-12	3.812
518 (19)	-63747.871	-90637.138	-5.809	6.460	1.368	-8.062892	131-57-46	8.688
519 (20)	-63745.055	-90634.611	2.816	2.527	10.375	29.216000	41-54-14	3.784
836 (14)	-63740.031	-90640.153	5.024	-5.542	7.360	36.976640	312-11-36	7.480
835 (14)	-63739.216	-90641.062	0.815	-0.909	0.909	0.740835	311-52-45	1.221

TOTAL
 ZS 66.088039
 S 33.044019

 測点 33.044019 / SQ METER
 9.995815 ユヰ"

*** 変位データ (18)

33

NO	X	Y	DX	DY	D M D	ZS	A	L
905 (26)	-63733.454	-90647.561						
906 (27)	-63736.298	-90650.092	-2.844	-2.531	-2.531	7.198164	221-40-02	3.607
834 (28)	-63742.062	-90643.598	-5.764	6.494	1.432	-8.254048	131-35-31	8.683
835 (29)	-63739.216	-90641.062	2.846	2.536	10.462	29.774852	41-42-12	3.812
905 (26)	-63733.454	-90647.561	5.762	-6.499	6.499	37.447238	311-33-36	8.685

TOTAL

ZS 66.166206

S 33.083103

変位 33.083103 SQ METER

10.007638 ユー