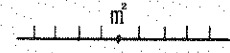


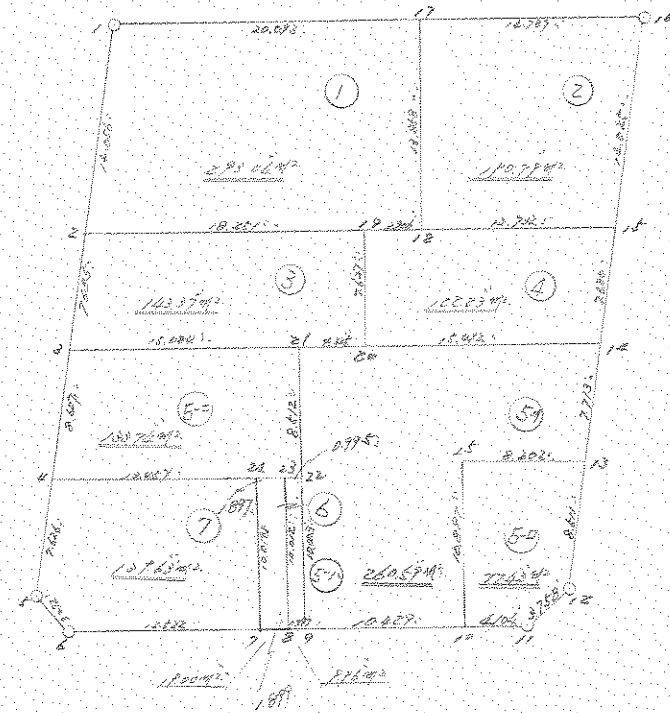


街画区地 原子一覽表 (3/ 街区)



計算面積 = 
 角切面積 = 
 換地面積 = 



NO		X	Y	DX	DY	D M D	ZS	A	L
599	(1)	-63673.653	-90617.437	-10.507	-9.236	-9.336	96.093352	221-37-22	14.056
590	(2)	-63664.360	-90626.773	-5.735	-5.115	-23.767	136.413445	221-43-46	7.665
598	(3)	-63690.095	-90631.886	-6.429	-5.723	-34.625	222.604125	221-40-30	8.607
599	(4)	-63696.524	-90637.611	-5.696	-5.071	-45.419	253.706624	221-40-40	7.626
600	(5)	-63702.220	-90642.682	-3.245	0.416	-50.074	162.490130	172-41-41	3.272
601	(6)	-63705.465	-90642.266	-6.833	10.493	-39.165	267.614445	123-04-19	12.522
602	(7)	-63712.293	-90631.779	-1.034	1.593	-27.079	27.999686	122-59-14	1.899
603	(8)	-63713.352	-90630.180	-0.541	0.637	-24.649	13.335109	122-52-37	0.997
543	(9)	-63713.673	-90629.343	-5.690	8.740	-15.072	65.759666	123-03-55	10.429
544	(10)	-63719.563	-90620.603	-2.239	3.439	-2.893	6.477427	123-04-00	4.104
545	(11)	-63721.602	-90617.164	0.494	3.725	-4.271	2.109874	82-26-44	3.756
546	(12)	-63721.308	-90613.439	6.366	5.649	13.645	66.864070	41-35-06	6.511
547	(13)	-63714.942	-90607.790	5.765	5.124	24.418	140.769770	41-37-52	7.713
548	(14)	-63709.177	-90602.666	5.739	5.104	34.646	198.833394	41-36-54	7.660
507	(15)	-63703.433	-90597.562	10.487	8.312	49.062	314.513194	41-36-13	14.023
506	(16)	-63692.951	-90586.250	6.088	-12.379	45.995	372.007560	303-09-33	14.767
505	(17)	-63684.663	-90600.629	11.010	-16.803	16.803	165.056000	303-13-36	20.093
589	(1)	-63673.653	-90617.437						

TOTAL
 ZS 2779.652965
 S 1389.826482

 XDLT 1389.826482 SQ METER
 420.422510 5M"

*** 2D点+ 2D点 (/)

31

NO	X	Y	DX	DY	D M D	2S	A	L
589 (/)	-63673.853	-90617.437						
			-10.507	-9.336	-9.336	98.093352	221-37-22	14.056
590 (2)	-63684.360	-90626.773						
			-9.955	15.297	-3.375	33.598125	123-03-19	18.251
855 (19)	-63694.315	-90611.476						
			-2.147	3.265	15.185	-32.602195	123-20-39	3.906
856 (18)	-63696.462	-90608.213						
			11.599	7.584	26.032	301.945168	33-10-43	13.858
505 (17)	-63684.863	-90600.629						
			11.010	-16.808	16.808	185.056080	303-13-36	20.093
589 (/)	-63673.853	-90617.437						

TOTAL

2S 586.090530
S 293.045265

2D点 293.045265 / SQ METER

88.646192 2D点

*** 2D点+ 2D点 (2)

31

NO	X	Y	DX	DY	D M D	2S	A	L
505 (17)	-63684.863	-90600.629						
			-11.599	-7.584	-7.584	87.966816	213-10-43	13.858
856 (18)	-63696.462	-90608.213						
			-6.976	10.651	-4.517	31.510592	123-13-24	12.732
507 (15)	-63703.438	-90597.562						
			10.487	9.312	15.446	161.982202	41-36-13	14.025
506 (16)	-63692.951	-90588.250						
			8.088	-12.379	12.379	100.121352	303-09-33	14.787
505 (17)	-63684.863	-90600.629						

TOTAL

2S 381.530962
S 190.790481

2D点 190.790481 / SQ METER

57.714120 2D点

*** マルチポイント (W)

NO	X	Y	DX	DY	D M D	2S	A	L	31
590 (2)	-63684.360	-90626.773							
598 (3)	-63690.095	-90631.888	-5.735	-5.115	-5.115	29.334525	221-43-46	7.685	
841 (21)	-63698.345	-90619.260	-8.250	12.628	2.398	-19.783500	123-09-25	15.084	
854 (20)	-63700.707	-90615.637	-2.362	3.623	18.649	-44.048938	123-06-08	4.325	
855 (19)	-63694.315	-90611.476	6.392	4.161	26.433	168.959736	33-03-47	7.627	
590 (2)	-63684.360	-90626.773	9.955	-15.297	15.297	152.281635	303-03-19	18.251	

TOTAL

2S 286.743456
S 143.371729

合計 143.371729 / SQ METER

43.369948 ㎡

*** マルチポイント (K)

NO	X	Y	DX	DY	D M D	2S	A	L	31
855 (19)	-63694.315	-90611.476							
854 (20)	-63700.707	-90615.637	-6.392	-4.161	-4.161	26.597112	213-03-47	7.627	
543 (14)	-63709.177	-90602.666	-8.470	12.971	4.649	-39.377030	123-08-40	15.492	
507 (15)	-63703.438	-90597.562	5.739	5.104	22.724	130.413036	41-30-54	7.680	
856 (18)	-63696.462	-90608.213	6.976	-10.651	17.177	119.626752	303-13-24	12.732	
855 (19)	-63694.315	-90611.476	2.147	-3.263	3.263	7.005661	303-20-39	3.906	

TOTAL

2S 244.465531
S 122.232765

合計 122.232765 / SQ METER

36.975411 ㎡

*** 測点タイプ (4-1)

NO		X	Y	DX	DY	D M D	2S	A	L
841	(21)	-63698.345	-90619.260						
				-7.121	-4.663	-4.663	33.205223	213-13-04	8.512
842	(22)	-63705.466	-90623.923						
				-8.407	-5.420	-14.746	123.969622	212-48-36	10.003
543	(9)	-63713.873	-90629.343						
				-5.690	8.740	-11.426	65.013940	123-03-55	10.429
544	(10)	-63719.563	-90620.603						
				9.124	5.958	3.272	29.653726	33-08-41	10.897
853	(25)	-63710.439	-90614.645						
				-4.503	6.855	16.065	-72.430755	123-18-02	8.202
547	(13)	-63714.942	-90607.790						
				5.765	5.124	28.064	161.788560	41-37-52	7.713
548	(14)	-63709.177	-90602.666						
				6.470	-12.971	20.217	171.237990	303-06-40	15.492
854	(20)	-63700.707	-90615.637						
				2.382	-3.623	3.623	8.557526	303-06-08	4.325
841	(21)	-63698.345	-90619.260						

TOTAL
 2S 521.196234
 S 260.598117

 測点 260.598117 SO METER
 78.830930 2M

*** 測点タイプ (4-0)

NO		X	Y	DX	DY	D M D	2S	A	L
853	(25)	-63710.439	-90614.645						
				-9.124	-5.958	-5.958	54.360792	213-08-41	10.897
544	(10)	-63719.563	-90620.603						
				-2.239	3.439	-8.477	18.980003	123-04-00	4.104
545	(11)	-63721.802	-90617.164						
				0.494	3.725	-1.313	0.648622	32-26-44	3.758
546	(12)	-63721.308	-90613.439						
				6.366	5.649	8.061	51.316326	41-35-06	8.511
547	(13)	-63714.942	-90607.790						
				4.503	-6.855	6.855	30.868065	303-18-02	8.202
853	(25)	-63710.439	-90614.645						

TOTAL
 2S 154.676564
 S 77.438282

 測点 77.438282 SO METER
 23.425080 2M

*** 測点一覧 (5-18)

NO	X	Y	DX	DY	D M D	ZS	A	L	31
843 (23)	-63704.918	-90624.754							
603 (8)	-63713.332	-90630.180	-8.414	-5.426	-5.426	45.654364	212-49-01	10.012	
543 (9)	-63713.873	-90629.343	-0.541	0.837	-10.015	5.418115	122-52-37	0.997	
842 (22)	-63705.466	-90623.923	8.407	5.420	-3.758	-31.593506	32-48-36	10.003	
843 (23)	-63704.918	-90624.754	0.548	-0.831	0.831	0.455388	303-24-10	0.995	

TOTAL

ZS 19.934361
S 9.967180

測点 9.967180 SQ METER

3.015072 9m

*** 測点一覧 (5-19)

NO	X	Y	DX	DY	D M D	ZS	A	L	31
598 (3)	-63690.095	-90631.888							
599 (4)	-63696.524	-90637.611	-6.429	-5.723	-5.723	36.793167	221-40-30	8.607	
844 (24)	-63703.880	-90626.342	-7.358	11.289	-0.177	1.302012	123-08-06	13.457	
843 (23)	-63704.918	-90624.754	-1.038	1.588	12.680	-13.161840	123-10-15	1.897	
842 (22)	-63705.466	-90623.923	-0.548	0.831	15.099	-8.274252	123-24-10	0.995	
841 (21)	-63698.345	-90619.260	7.121	4.663	20.593	146.642753	33-13-04	8.512	
598 (3)	-63690.095	-90631.888	8.250	-12.628	12.628	104.181000	303-09-25	15.084	

TOTAL

ZS 267.482340
S 133.741420

測点 133.741420 SQ METER

40.456779 9m

*** 測点データ (6)

NO	X	Y	DX	DY	D M D	ZS	A	L	31
844 (24)	-63703.880	-90626.342							
602 (7)	-63712.298	-90631.773	-8.418	-5.431	-5.431	45.718158	212-49-43	10.018	
603 (8)	-63713.332	-90630.180	-1.034	1.593	-9.289	9.584146	122-59-14	1.899	
843 (23)	-63704.918	-90624.754	8.414	5.426	-2.250	-18.931500	32-49-01	10.012	
844 (24)	-63703.880	-90626.342	1.038	-1.588	1.588	1.646344	303-10-15	1.897	

TOTAL
 ZS 38.019148
 S 19.009574

 測点 19.009574 / SQ METER
 5.750396 ㎡

*** 測点データ (7)

NO	X	Y	DX	DY	D M D	ZS	A	L	31
599 (4)	-63696.524	-90637.611							
600 (✓)	-63702.220	-90642.682	-5.696	-5.071	-5.071	28.884416	221-40-40	7.626	
601 (✓)	-63705.465	-90642.266	-3.245	0.416	-9.726	31.560870	172-41-41	3.272	
602 (7)	-63712.298	-90631.773	-6.833	10.493	1.183	-8.083439	123-04-19	12.522	
844 (24)	-63703.880	-90626.342	8.418	5.431	17.107	144.006726	32-49-43	10.018	
599 (4)	-63696.524	-90637.611	7.356	-11.269	11.269	82.894764	303-08-06	13.457	

TOTAL
 ZS 279.263337
 S 139.631668

 測点 139.631668 / SQ METER
 42.230579 ㎡