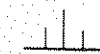


街画区地原一覽表

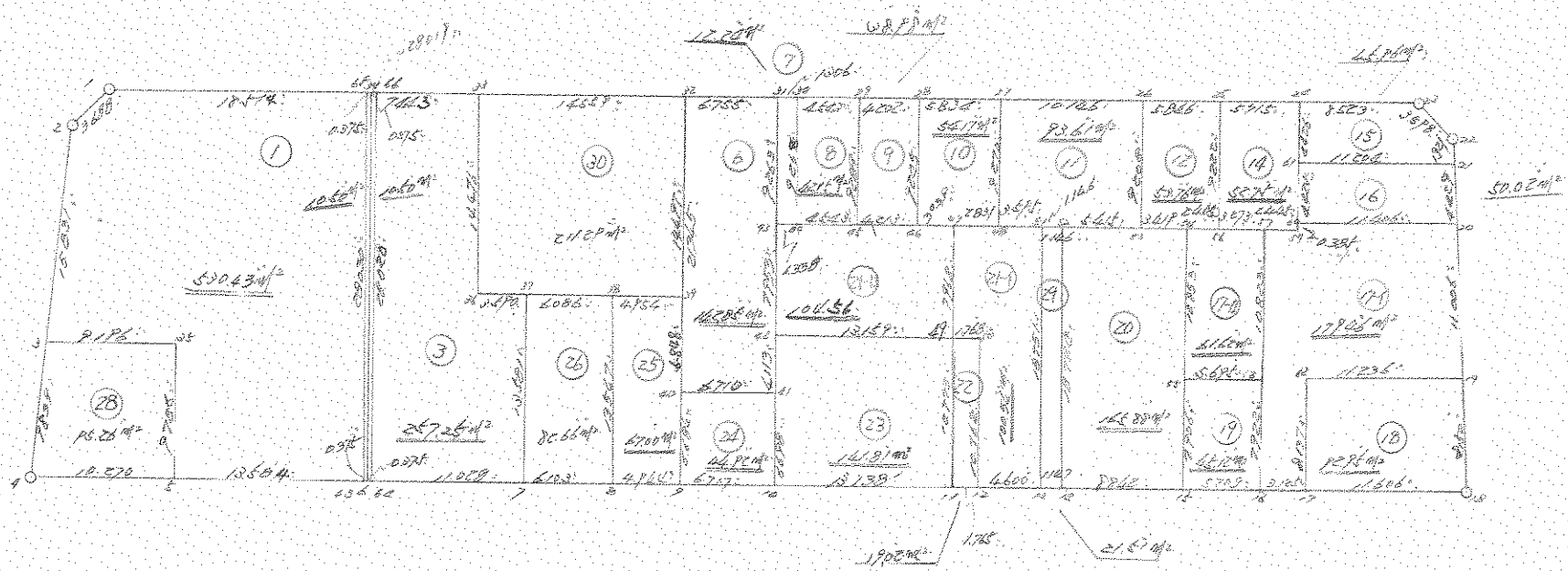
(30 街区)



計算面積 =

角切面積 =

換地面積 =



30
街区

*** メンテキ ケイサン ()

NO	X	Y	DX	DY	D M D	2S	A	L
514 ()	-63755.703	-90632.763	-0.389	-3.667	-3.667	1.426463	263-56-41	3.688
515 ()	-63756.092	-90636.430	-11.802	-10.551	-17.885	211.078770	221-47-48	15.831
615 ()	-63767.894	-90646.981	-7.364	-6.525	-34.961	257.452804	221-32-35	9.839
616 ()	-63775.258	-90653.506	-6.020	8.320	-33.166	199.659320	125-53-16	10.270
617 ()	-63781.278	-90645.186	-7.935	11.025	-13.821	109.669635	125-44-37	13.584
588 ()	-63789.213	-90634.161	-0.216	0.306	-2.490	0.537840	125-13-03	0.375
587 ()	-63789.429	-90633.855	-0.219	0.304	-1.880	0.411720	125-46-08	0.375
586 ()	-63789.648	-90633.551	-6.453	8.943	7.367	-47.539251	125-48-47	11.028
585 ()	-63796.101	-90624.608	-3.551	4.964	21.274	-75.543974	125-34-41	6.103
584 ()	-63799.652	-90619.644	-2.885	4.015	30.253	-87.279905	125-41-58	4.944
583 ()	-63802.537	-90615.629	-3.924	5.452	39.720	-155.861280	125-44-38	6.717
582 ()	-63806.461	-90610.177	-7.660	10.674	55.846	-427.780360	125-39-52	13.138
574 ()	-63814.121	-90599.503	-1.029	1.434	67.954	-69.924666	125-39-44	1.765
573 ()	-63815.150	-90598.069	-2.683	3.736	73.124	-196.191692	125-41-02	4.600
572 ()	-63817.833	-90594.333	-0.674	0.928	77.788	-52.429112	125-59-26	1.147
571 ()	-63818.507	-90593.405	-5.163	7.178	85.894	-443.470722	125-43-36	8.842
570 ()	-63823.670	-90586.227	-3.329	4.638	97.710	-325.276590	125-40-10	5.709
569 ()	-63826.999	-90581.589	-1.821	2.540	104.888	-191.001048	125-38-16	3.125
568 ()	-63828.820	-90579.049	-6.760	9.434	116.862	-789.987120	125-37-26	11.606
567 ()	-63835.580	-90569.615	6.830	4.447	130.743	892.974690	33-04-05	8.150
566 ()	-63828.750	-90565.168	9.222	6.008	141.198	1302.127956	33-05-01	11.006

NO	X	Y	DX	DY	D M D	ZS	A	L
523 ()	-63819.528	-90559.160	3.711	2.418	149.624	555.254664	33-05-14	4.429
524 ()	-63815.817	-90556.742	1.602	1.060	153.102	245.269404	33-29-29	1.921
525 ()	-63814.215	-90555.682	3.536	-0.667	153.495	542.758320	349-19-04	3.598
526 ()	-63810.679	-90556.349	4.968	-6.925	145.903	724.846104	305-39-20	8.523
527 ()	-63805.711	-90563.274	3.333	-4.643	134.335	447.738555	305-40-22	5.715
581 ()	-63802.378	-90567.917	3.410	-4.748	124.944	426.059040	305-41-09	5.846
580 ()	-63798.968	-90572.665	5.944	-8.223	111.973	665.567512	305-51-41	10.146
579 ()	-63793.024	-90580.888	3.412	-4.732	99.018	337.849416	305-47-36	5.834
578 ()	-63789.612	-90585.620	2.456	-3.409	90.877	223.193912	305-46-15	4.202
577 ()	-63787.156	-90589.029	2.655	-3.686	83.782	222.441210	305-45-54	4.543
576 ()	-63784.501	-90592.715	0.764	-1.059	79.037	60.384268	305-48-29	1.306
575 ()	-63783.737	-90593.774	3.949	-5.480	72.498	286.294602	305-46-38	6.755
561 ()	-63779.788	-90599.254	8.498	-11.821	55.197	469.064106	305-42-43	14.559
562 ()	-63771.290	-90611.075	4.340	-6.047	37.329	162.007860	305-40-03	7.443
563 ()	-63766.950	-90617.122	0.219	-0.305	30.977	6.783963	305-40-47	0.375
564 ()	-63766.731	-90617.427	0.225	-0.300	30.372	6.833700	306-52-12	0.375
565 ()	-63766.506	-90617.727	10.803	-15.036	15.036	162.433908	305-41-47	18.514
514 ()	-63755.703	-90632.763						

TOTAL

ZS 5657.834022

S 2828.917011

メータ 2828.917011 SQ METER

855.747395 ツボ

*** メンセキ ケイザン (/)

NO	X	Y	DX	DY	D M D	2S	A	L
514 (/)	-63755.703	-90632.763						
			-0.389	-3.667	-3.667	1.426463	263-56-41	3.688 ✓
515 (2)	-63756.092	-90636.430						
			-11.802	-10.551	-17.885	211.078770	221-47-48	15.831 ✓
615 (w)	-63767.894	-90646.981						
			-5.395	7.447	-20.989	113.235655	125-55-18	9.196 ✓
881 (ｷﾝ)	-63773.289	-90639.534						
			-7.989	-5.652	-19.194	153.340866	215-16-42	9.786 ✓
617 (ｻ)	-63781.278	-90645.186						
			-7.935	11.025	-13.821	109.669635	125-44-37	13.584 ✓
588 (ｽ)	-63789.213	-90634.161						
			22.707	16.434	13.638	309.678066	35-53-41	28.030 ✓
565 (ｻ)	-63766.506	-90617.727						
			10.803	-15.036	15.036	162.433908	305-41-47	18.514 ✓
514 (/)	-63755.703	-90632.763						

TOTAL

2S 1060.863363

S 530.431681

メンセキ 530.431681 SQ METER

160.455583 ッホ"

*** ムシキ ケイサン (W)

NO	X	Y	DX	DY	D M D	2S	A	L
563 (66)	-63766.950	-90617.122						
586 (66)	-63789.648	-90633.551	-22.698	-16.429	-16.429	372.905442	215-53-50	28.020
585 (7)	-63796.101	-90624.608	-6.453	8.943	-23.915	154.323495	125-48-47	11.028
869 (77)	-63785.100	-90616.644	11.001	7.964	-7.008	-77.095008	35-54-07	13.581
870 (76)	-63783.014	-90619.566	2.086	-2.922	-1.966	-4.101076	305-31-22	3.590
562 (77)	-63771.290	-90611.075	11.724	8.491	3.603	42.241572	35-54-49	14.476
563 (66)	-63766.950	-90617.122	4.340	-6.047	6.047	26.243980	305-40-03	7.443

TOTAL

2S 514.518405
S 257.259202

ムシキ 257.259202 SQ METER

77.820908 ツホ"

*** メンセキ ケイサン (5-A)

NO	X	Y	DX	DY	D M D	2S	A	L
565 (65)	-63766.506	-90617.727						
588 (68)	-63789.213	-90634.161	-22.707	-16.434	-16.434	373.166838	215-53-41	28.030
587 (67)	-63789.429	-90633.855	-0.216	0.306	-32.562	7.033392	125-13-03	0.375
564 (64)	-63766.731	-90617.427	22.698	16.428	-15.828	-359.263944	35-53-44	28.019
565 (65)	-63766.506	-90617.727	0.225	-0.300	0.300	0.067500	306-52-12	0.375

TOTAL

2S 21.003786
S 10.501893

メンセキ 10.501893 / SQ METER

3.176822 ツホ"

*** メンセキ ケイサン (5-B)

NO	X	Y	DX	DY	D M D	2S	A	L
564 (64)	-63766.731	-90617.427						
587 (67)	-63789.429	-90633.855	-22.698	-16.428	-16.428	372.882744	215-53-44	28.019
586 (66)	-63789.648	-90633.551	-0.219	0.304	-32.552	7.128888	125-46-08	0.375
563 (63)	-63766.950	-90617.122	22.698	16.429	-15.819	-359.059662	35-53-50	28.020
564 (64)	-63766.731	-90617.427	0.219	-0.305	0.305	0.066795	305-40-47	0.375

TOTAL

2S 21.018765
S 10.509382

メンセキ 10.509382 / SQ METER

3.179088 ツホ"

*** 埋設計測 (6)

NO	X	Y	DX	DY	D M D	2S	A	L
561 (22)	-63779.788	-90599.254						
867 (29)	-63791.571	-90607.700	-11.783	-8.446	-8.446	99.519218	215-37-58	14.497
882 (40)	-63797.120	-90611.713	-5.549	-4.013	-20.905	116.001845	215-52-27	6.848
866 (41)	-63801.029	-90606.259	-3.909	5.454	-19.464	76.084776	125-37-48	6.710
865 (42)	-63797.680	-90603.872	3.349	2.387	-11.623	-38.925427	35-28-46	4.113
864 (44)	-63791.217	-90599.237	6.463	4.635	-4.601	-29.736263	35-38-48	7.953
575 (51)	-63783.737	-90593.774	7.480	5.463	5.497	41.117560	36-08-33	9.263
561 (22)	-63779.788	-90599.254	3.949	-5.480	5.480	21.640520	305-46-38	6.755

TOTAL

2S 285.702229

S 142.851114

埋設計 142.851114 SQ METER

43.212462 ヲホ"

*** メンピキ ケイサン (7)

NO	X	Y	DX	DY	D M D	2S	A	L
575 (ㄱ /)	-63783.737	-90593.774						
864 (ㄴ)	-63791.217	-90599.237	-7.480	-5.463	-5.463	40.863240	216-08-33	9.263
883 (ㄷ)	-63792.004	-90598.155	-0.787	1.082	-9.844	7.747228	126-01-50	1.338
576 (ㄹ)	-63784.501	-90592.715	7.503	5.440	-3.322	-24.924966	35-56-37	9.268
575 (ㅁ /)	-63783.737	-90593.774	0.764	-1.059	1.059	0.809076	305-48-29	1.306

TOTAL
 2S 24.494578
 S 12.247289

 멘피키 12.247289 SQ METER
 3.704804 ㄱ

*** 멘피키 케이션 (8)

NO	X	Y	DX	DY	D M D	2S	A	L
576 (ㄹ)	-63784.501	-90592.715						
883 (ㄷ)	-63792.004	-90598.155	-7.503	-5.440	-5.440	40.816320	215-56-37	9.268
863 (ㄴ)	-63794.677	-90594.481	-2.673	3.674	-7.206	19.261638	126-02-15	4.543
577 (ㄷ)	-63787.156	-90589.029	7.521	5.452	1.920	14.440320	35-56-19	9.289
576 (ㄹ)	-63784.501	-90592.715	2.655	-3.686	3.686	9.786330	305-45-54	4.543

TOTAL
 2S 84.304608
 S 42.152304

 멘피키 42.152304 SQ METER
 12.751071 ㄱ

*** 又測時 91777 (8)

30

NO	X	Y	DX	DY	D M D	2S	A	L
576 ()	-63784.523	-90592.693						
883 ()	-63792.037	-90593.150	-7.514	-5.457	-5.457	41.003898	215-59-20	9.286
883 ()	-63794.677	-90594.481	-2.640	3.664	-7.245	19.126800	125-44-12	4.520
577 ()	-63787.156	-90589.029	7.521	5.452	1.876	14.109396	35-56-19	9.289
576 ()	-63784.523	-90592.693	2.633	-3.664	3.664	9.647312	305-42-06	4.512

TOTAL

2S 83.887406

S 41.943703

又測時 41.943703 SQ METER

12.687970 ユガ

*** 又測時 91777 (9)

30

NO	X	Y	DX	DY	D M D	2S	A	L
577 (2P)	-63787.156	-90589.029						
883 (4K)	-63794.677	-90594.481	-7.521	-5.452	-5.452	41.004492	215-56-19	9.289
875 (46)	-63797.104	-90591.037	-2.427	3.444	-7.460	18.105420	125-10-21	4.213
578 (28)	-63789.612	-90585.620	7.492	5.417	1.401	10.496292	35-52-06	9.245
577 (2P)	-63787.156	-90589.029	2.456	-3.409	3.409	8.372504	305-46-15	4.202

TOTAL

2S 77.978708

S 38.989354

又測時 38.989354 / SQ METER

11.794279 ユガ

*** 測点データ (10)

NO	X	Y	DX	DY	D M D	ZS	A	L
578 (28)	-63789.612	-90585.620						
875 (46)	-63797.104	-90591.037	-7.492	-5.417	-5.417	40.584164	215-52-06	9.245 ✓
876 (47)	-63798.892	-90588.580	-1.788	2.457	-8.377	14.978076	126-02-38	3.039 ✓
877 (48)	-63800.557	-90586.291	-1.665	2.289	-3.631	6.045615	126-01-55	2.831 ✓
579 (27)	-63793.024	-90580.888	7.533	5.403	4.061	30.591513	35-38-59	9.270 ✓
578 (28)	-63789.612	-90585.620	3.412	-4.732	4.732	16.145584	305-47-36	5.834 ✓

TOTAL

ZS 108.344952

S 54.172476

測点 54.172476 / SQ METER

16.387173 ㎡

30

*** 測点データ (//)

NO	X	Y	DX	DY	D M D	ZS	A	L
579 (27)	-63793.024	-90580.888						
877 (48)	-63800.557	-90586.291	-7.533	-5.403	-5.403	40.700799	215-38-59	9.270 ✓
878 (49)	-63802.632	-90583.355	-2.075	2.936	-7.870	16.330250	125-15-02	3.595 ✓
879 (42)	-63803.278	-90582.408	-0.646	0.947	-3.987	2.575602	124-18-00	1.146 ✓
880 (50)	-63806.456	-90578.024	-3.178	4.334	1.344	-4.271232	125-56-19	5.415 ✓
580 (26)	-63798.968	-90572.665	7.488	5.359	11.087	83.019456	35-35-26	9.208 ✓
579 (27)	-63793.024	-90580.888	5.944	-8.223	8.223	48.877512	305-51-41	10.146 ✓

TOTAL

ZS 187.232387

S 93.616193

測点 93.616193 / SQ METER

28.318698 ㎡

30

*** 測点データ (12)

30

NO	X	Y	DX	DY	D M D	ZS	A	L
580 (26)	-63798.966	-90572.665						
			-7.488	-5.359	-5.359	40.126192	215-35-26	9.208
880 (63)	-63806.456	-90573.024						
			-2.001	2.772	-7.946	15.699946	125-49-27	3.419
884 (44)	-63808.457	-90575.252						
			-1.407	1.950	-3.224	4.536168	125-48-43	2.405
886 (46)	-63809.864	-90573.302						
			7.488	5.385	4.111	30.774946	35-43-45	9.222
581 (25)	-63802.378	-90567.917						
			3.410	-4.748	4.748	16.190880	305-41-09	5.848
580 (26)	-63798.966	-90572.665						

TOTAL

ZS 107.529932

S 53.764966

測点 53.764966 / SQ METER

16.263902 ユニ

*** 2011 7100 (/)

NO	X	Y	DX	DY	D M D	ZS	A	L
561 (24)	-63802.378	-90567.917	-7.486	-5.365	-5.385	40.312110	215-43-45	9.222
866 (46)	-63809.664	-90573.302	-1.915	2.654	-8.116	15.542140	125-48-45	3.273
867 (47)	-63811.779	-90570.648	-1.431	1.983	-3.479	4.976449	125-48-56	2.445
862 (48)	-63813.210	-90568.665	0.313	0.225	-1.271	0.397823	35-42-38	0.385
861 (49)	-63812.897	-90568.440	3.593	2.582	1.536	5.518848	35-42-06	4.425
860 (51)	-63809.304	-90565.858	3.593	2.584	6.702	24.080266	35-43-22	4.426
527 (24)	-63805.711	-90563.274	3.333	-4.643	4.643	15.475119	305-40-22	5.715
551 (24)	-63802.378	-90567.917						

TOTAL
 ZS 105.509129
 S 52.754564

 2011 52.754564 / SQ METER
 15.958255 2011

*** 測点データ (14)

30

NO	X	Y	DX	DY	D M D	2S	A	L
581 ()	-63802.378	-90567.917	-7.466	-5.385	-5.385	40.312110	215-43-45	9.222
886 ()	-63809.864	-90573.302	-1.915	2.654	-8.116	15.542140	125-48-45	3.273
887 ()	-63811.779	-90570.648	-1.431	1.983	-3.479	4.978449	125-48-56	2.445
862 ()	-63813.210	-90568.665	0.414	0.296	-1.200	0.496800	35-33-50	0.509
861 ()	-63812.796	-90568.369	3.492	2.511	-1.607	5.611644	35-43-08	4.301
860 ()	-63809.304	-90565.858	3.593	2.584	6.702	24.060286	35-43-22	4.426
527 ()	-63805.711	-90563.274	3.333	-4.643	4.643	15.475119	305-40-22	5.715
581 ()	-63802.378	-90567.917						

TOTAL

2S 105.502948
S 52.751474

測点 52.751474 SQ METER

15.957320 ユニ

*** 測点データ (15)

30

NO	X	Y	DX	DY	D M D	2S	A	L
527 (24)	-63805.711	-90563.274	-3.593	-2.584	-2.584	9.264312	215-43-22	4.426
860 (61)	-63809.304	-90565.858	-6.513	9.116	3.948	-25.713324	125-32-39	11.204
524 (21)	-63815.817	-90556.742	1.602	1.060	14.124	22.626648	33-29-29	1.921
525 (22)	-63814.215	-90555.682	3.536	-0.667	14.517	51.332112	349-19-04	3.580
526 (23)	-63810.679	-90556.349	4.968	-6.925	6.925	34.403400	305-39-20	8.523
527 (24)	-63805.711	-90563.274						

TOTAL

2S 91.933148
S 45.966574

測点 45.966574 SQ METER

13.904888 ユニ

*** 方向角 (/ 6)

NO	X	Y	DX	DY	D H D	ZS	A	L
860 (61)	-63809.304	-90565.858						
861 (60)	-63812.897	-90568.440	-3.593	-2.582	-2.582	9.277126	215-42-08	4.425
523 (20)	-63819.528	-90559.160	-6.631	9.280	4.116	-27.293156	125-32-51	11.406
524 (21)	-63815.817	-90556.742	3.711	2.418	15.814	58.685754	33-05-14	4.429
860 (61)	-63809.304	-90565.858	6.513	-9.116	9.116	59.372508	305-32-39	11.204

TOTAL

ZS 100.042192

S 50.021096

方向角 50.021096 SQ METER

15.131381 度

*** 方向角 (/ 7-1)

NO	X	Y	DX	DY	D H D	ZS	A	L
861 ()	-63812.897	-90568.440						
862 ()	-63813.210	-90568.665	-0.313	-0.225	-0.225	0.070425	215-42-38	0.385
867 ()	-63811.779	-90570.643	1.431	-1.983	-2.433	-3.481623	305-48-56	2.445
888 ()	-63820.583	-90577.285	-8.784	-6.617	-11.033	96.913872	216-59-27	10.997
569 ()	-63826.999	-90581.589	-6.436	-4.324	-21.974	141.424864	215-53-42	7.754
568 ()	-63828.820	-90579.049	-1.821	2.540	-23.759	43.263318	125-38-16	3.125
889 ()	-63822.210	-90574.304	6.610	4.745	-18.473	-108.886530	35-40-22	8.137
566 ()	-63828.750	-90565.168	-6.540	9.138	-2.592	18.951880	125-35-49	11.236
523 ()	-63819.528	-90559.160	9.222	6.003	12.552	115.754544	33-05-01	11.008
861 ()	-63812.897	-90568.440	6.631	-9.280	9.280	61.535680	305-32-51	11.406

TOTAL

ZS 363.546030

S 181.773015

方向角 181.773015 SQ METER

54.986357 度

*** 3057 5100 (17-1)

NO		X	Y	DX	DY	D M D	ZS	A	L
537 (57)		-63811.779	-90570.648						
				-8.788	-6.317	-6.317	55.513796	215-42-34	10.823
565 (58)		-63820.567	-90576.965						
				-6.432	-4.624	-17.258	111.003456	215-42-45	7.922
569 (56)		-63826.999	-90561.569						
				-1.821	2.540	-19.342	35.221782	125-38-16	3.125
568 (17)		-63828.820	-90579.049						
				6.610	4.745	-12.057	-79.696770	35-40-22	8.137
589 (62)		-63822.210	-90574.304						
				-6.540	9.136	1.824	-11.923960	125-35-49	11.236
566 (18)		-63828.750	-90565.166						
				9.222	6.008	16.966	156.476896	33-05-01	11.006
523 (20)		-63819.528	-90559.160						
				6.631	-9.230	13.696	90.818176	305-32-51	11.406
561 (60)		-63812.897	-90568.440						
				-0.313	-0.225	4.191	-1.311783	215-42-38	0.365
562 (59)		-63813.810	-90568.665						
				1.431	-1.983	1.983	2.837673	305-48-56	2.445
557 (57)		-63811.779	-90570.648						

TOTAL

ZS 356.936266
S 179.468133

3057 179.468133 / SQ METER

*** 3057 5100 (17-1)

NO		X	Y	DX	DY	D M D	ZS	A	L
584 (54)		-63808.457	-90575.252						
				-8.802	-6.349	-6.349	55.883898	215-48-12	10.853
555 (54)		-63817.259	-90581.601						
				-3.308	4.635	-8.082	26.869096	125-30-35	5.695
568 (58)		-63820.567	-90576.965						
				8.788	6.317	2.891	25.406108	35-42-34	10.623
567 (57)		-63811.779	-90570.648						
				1.915	-2.654	6.554	12.550910	305-48-45	3.273
566 (56)		-63809.664	-90573.302						
				1.407	-1.950	1.950	2.743650	305-48-43	2.405
584 (54)		-63808.457	-90575.252						

TOTAL

ZS 123.253662
S 61.626831

3057 61.626831 / SQ METER

18.642116 5M

*** 方位データ (18)

30

NO	X	Y	DX	DY	D M D	ZS	A	L
889 (62)	-63822.210	-90574.304						
568 (17)	-63828.820	-90579.049	-6.610	-4.745	-4.745	31.364450	215-40-22	8.137 ✓
567 (18)	-63835.580	-90569.615	-6.760	9.434	-0.056	0.378560	125-37-26	11.606 ✓
566 (17)	-63828.750	-90565.168	6.830	4.447	13.825	94.424750	33-04-05	8.150 ✓
889 (62)	-63822.210	-90574.304	6.540	-9.136	9.136	59.749440	305-35-49	11.236 ✓

TOTAL

ZS 185.917200

S 92.958600

方位 92.958600 / SQ METER

28.119976 ユニ

*** 方位データ (19)

30

NO	X	Y	DX	DY	D M D	ZS	A	L
885 ()	-63817.259	-90581.601						
570 ()	-63823.670	-90586.227	-6.411	-4.626	-4.626	29.657286	215-48-47	7.906
569 ()	-63826.999	-90581.589	-3.329	4.635	-4.614	15.360006	125-40-10	5.709
888 ()	-63820.563	-90577.265	6.436	4.324	4.348	27.983728	33-53-42	7.754
885 ()	-63817.259	-90581.601	3.304	-4.336	4.336	14.326144	307-18-26	5.451

TOTAL

ZS 87.327164

S 43.663582

方位 43.663582 / SQ METER

13.208233 ユニ

*** 3007 7100 (19)

NO	X	Y	DX	DY	D.I.D	ZS	A	L
685 (✓✓)	-63817.259	-90581.601						
570 (✓✓)	-63823.670	-90536.227	-6.411	-4.626	-4.626	29.657266	215-48-47	7.906
569 (✓✓)	-63826.999	-90581.589	-3.329	4.638	-4.614	15.360006	125-40-10	5.709
888 (✓✓)	-63820.567	-90576.965	6.432	4.624	4.648	29.895936	35-42-45	7.922
885 (✓✓)	-63817.259	-90581.601	3.308	-4.636	4.636	15.335888	305-30-35	5.695

TOTAL

ZS 90.249116

S 45.124558

 3007 45.124558 / SQ METER

13.850178 2M

*** マルチリイコ (20)

30

NO	X	Y	DX	DY	D M D	2S	A	L
879 (✓)	-63803.278	-90582.408						
571 (/)	-63818.507	-90593.405	-15.229	-10.997	-10.997	167.473313	215-50-00	18.784
570 (/)	-63823.670	-90586.227	-5.163	7.178	-14.816	78.495008	125-43-36	6.842
885 (✓)	-63817.259	-90581.601	6.411	4.626	-3.012	-19.309932	35-48-47	7.906
884 (✓)	-63808.457	-90575.252	8.802	6.349	7.963	70.090326	35-48-12	10.653
880 (✓)	-63806.456	-90576.024	2.001	-2.772	11.540	23.091540	305-49-27	3.419
879 (✓)	-63803.278	-90582.408	3.178	-4.384	4.384	13.932352	305-56-19	5.415

TOTAL

2S 331.772607
S 165.886303

マルチ 165.886303 SQ METER

50.180606 ッホ"

*** POINT TO POINT (2/-/)

NO		X	Y	DX	DY	D M L	ZS	A	L
876	(47)	-63798.092	-90588.580	-6.490	-4.623	-4.623	30.003270	215-27-48	7.968
874	(49)	-63805.332	-90593.203	-1.040	1.430	-7.816	8.128640	126-01-39	1.763
873	(40)	-63806.422	-90591.773	-3.728	-6.296	-12.682	110.688496	215-48-18	10.762
873	(12)	-63815.150	-90590.069	-2.685	3.736	-15.242	40.894286	125-41-02	4.600
872	(10)	-63817.833	-90594.333	15.201	10.978	-0.528	-8.026128	35-50-11	13.751
878	(41)	-63802.632	-90583.355	2.075	-2.936	7.514	15.591550	305-15-02	3.595
877	(48)	-63800.557	-90586.291	1.665	-2.289	2.289	3.811185	306-01-55	2.831
876	(47)	-63798.092	-90588.580						

TOTAL
 2S : 201.091299
 S : 100.545649

 POINT : 100.545649 / SC METER ✓
 30.415058 DM"

*** メンベキ ケイサツ (2 / - ロ)

NO	X	Y	DX	DY	D M D	2S	A	L
864 (ㄥ)	-63791.217	-90599.237						
865 (ㄥㄥ)	-63797.680	-90603.872	-6.463	-4.635	-4.635	29.956005	215-38-48	7.953
874 (ㄥㄆ)	-63805.382	-90593.203	-7.702	10.669	1.399	-10.775098	125-49-32	13.159
876 (ㄥㄗ)	-63798.892	-90588.580	6.490	4.623	16.691	108.324590	35-27-48	7.968
875 (ㄥㄘ)	-63797.104	-90591.037	1.788	-2.457	18.857	33.716316	306-02-38	3.039
863 (ㄥㄙ)	-63794.677	-90594.481	2.427	-3.444	12.956	31.444212	305-10-21	4.213
864 (ㄥㄚ)	-63791.217	-90599.237	3.460	-4.756	4.756	16.455760	306-02-09	5.881

TOTAL
 2S 209.121785
 S 104.560892

 メンベキ 104.560892 / SQ METER
 31.629669 ツホ"

*** 測点データ (22)

NO		X	Y	DX	DY	D M D	ZS	A	L
874	(4P)	-63805.382	-90593.203						
				-8.739	-6.300	-6.300	55.055700	215-47-17	10.773
574	(//)	-63814.121	-90599.503						
				-1.029	1.434	-11.166	11.489814	125-39-44	1.765
573	(/2)	-63815.150	-90598.069						
				8.728	6.296	-3.436	-29.989408	35-48-18	10.762
873	(40)	-63806.422	-90591.773						
				1.040	-1.430	1.430	1.467200	306-01-39	1.768
674	(4P)	-63805.382	-90593.203						

TOTAL
 ZS 38.043306
 S 19.021653

 測点 19.021653 / SQ METER
 5.754050 ユム

*** 測点データ (23)

NO		X	Y	DX	DY	D M D	ZS	A	L
865	(42)	-63797.680	-90603.872						
				-3.349	-2.387	-2.387	7.994063	215-28-46	4.113
866	(41)	-63801.029	-90606.259						
				-5.432	-3.913	-8.692	47.214944	215-48-08	6.698
592	(/0)	-63806.461	-90610.177						
				-7.660	10.674	-1.936	-14.829760	125-39-52	13.138
574	(//)	-63814.121	-90599.503						
				8.739	6.300	15.038	131.417082	35-47-17	10.773
874	(4P)	-63805.382	-90593.203						
				7.702	-10.669	10.669	82.172638	305-49-32	13.159
865	(42)	-63797.680	-90603.872						

TOTAL
 ZS 263.626487
 S 141.814243

 測点 141.814243 / SQ METER
 42.898808 ユム

*** 測点データ (24)

30

NO	X	Y	DX	DY	D M D	ZS	A	L
882 (40)	-63797.120	-90611.713	-5.417	-3.916	-3.916	21.212972	215-51-49	6.684
583 (6)	-63802.537	-90615.629	-3.924	5.452	-2.380	9.339120	125-44-38	6.717
582 (10)	-63806.461	-90610.177	5.432	3.918	6.990	37.969680	35-48-08	6.698
866 (41)	-63801.029	-90606.259	3.909	-5.454	5.454	21.319686	305-37-48	6.710
882 (40)	-63797.120	-90611.713						

TOTAL

ZS 89.841456

S 44.920729

測点 44.920729 SQ METER

13.508520 ヶ

*** 測点データ (25)

30

NO	X	Y	DX	DY	D M D	ZS	A	L
868 (7)	-63788.668	-90611.714	-10.984	-7.930	-7.930	87.103120	215-49-40	13.547
584 (6)	-63799.652	-90619.644	-2.885	4.015	-11.645	34.172825	125-41-58	4.944
583 (6)	-63802.537	-90615.629	5.417	3.916	-3.914	-21.202138	35-51-49	6.684
882 (40)	-63797.120	-90611.713	5.549	4.013	4.015	22.279235	35-52-27	6.848
867 (6)	-63791.571	-90607.700	2.903	-4.014	4.014	11.652642	305-52-31	4.954
868 (7)	-63788.668	-90611.714						

TOTAL

ZS 134.005684

S 67.002842

測点 67.002842 SQ METER

20.268359 ヶ

*** 交点データ (26)

30

NO	X	Y	DX	DY	DND	ZS	A	L
869 (27)	-63785.100	-90616.644						
585 (7)	-63796.101	-90624.603	-11.001	-7.964	-7.964	87.611964	215-54-07	13.581
584 (8)	-63799.652	-90619.644	-3.551	4.964	-10.964	38.933164	125-34-41	6.103
868 (28)	-63788.668	-90611.714	10.934	7.930	1.930	21.199120	35-49-40	13.547
869 (27)	-63785.100	-90616.644	3.568	-4.930	4.930	17.590240	305-53-40	6.086

TOTAL

ZS 165.334488

S 82.667244

交点データ 82.667244 SQ METER

25.006841 トラサ

*** >DIT 3100 (28)

30

NO		X	Y	DX	DY	D H D	ZS	A	L
615	(W)	-83767.894	-90646.981	-7.384	-6.525	-8.525	48.050100	221-32-35	9.839
616	(/)	-83775.258	-90653.566	-6.020	8.320	-4.730	28.474600	125-53-16	10.270
617	(/)	-83781.278	-90645.186	7.989	5.652	9.242	73.834338	35-18-42	9.766
641	(/)	-83773.289	-90639.534	5.395	-7.447	7.447	40.176565	305-55-13	9.196
615	(W)	-83767.894	-90646.981						

TOTAL
 ZS 190.535605
 S 95.267801

 >DIT 95.267801 / SQ METER
 28.818509 UM

*** >DIT 3100 (29)

30

NO		X	Y	DX	DY	D H D	ZS	A	L
678	(/)	-83802.632	-90583.355	-15.201	-10.978	-10.978	168.876578	215-50-11	18.751
572	(/)	-83817.833	-90594.333	-0.674	0.928	-21.023	14.172872	125-59-26	1.147
571	(/)	-83818.507	-90593.405	15.229	10.997	-9.103	-138.629587	35-50-00	18.784
679	(/)	-83803.278	-90582.408	0.646	-0.947	0.947	0.811762	304-18-00	1.146
678	(/)	-83802.632	-90583.355						

TOTAL
 ZS 43.031625
 S 21.515812

 >DIT 21.515812 / SQ METER
 0.3508533 UM

NO	X	Y	DX	DY	D H D	ZS	A	L
562 (10)	-63771.290	-90611.075						
870 (10)	-63783.014	-90619.566	-11.724	-8.491	-8.491	99.548484	215-54-49	14.476
869 (10)	-63785.100	-90616.644	-2.086	2.922	-14.060	29.329160	125-31-22	3.590
868 (10)	-63788.668	-90611.714	-3.568	4.930	-6.208	22.150144	125-53-40	6.086
867 (10)	-63791.571	-90607.700	-2.903	4.014	2.736	-7.942608	125-52-31	4.954
561 (10)	-63779.786	-90599.254	11.783	6.446	15.196	179.054468	35-37-58	14.497
562 (10)	-63771.290	-90611.075	8.498	-11.821	11.821	100.454858	305-42-43	14.559

TOTAL
 ZS 422.594506
 S 211.297253

 211.297253 SQ MEETER
 63.917419 ㎡