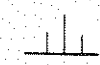
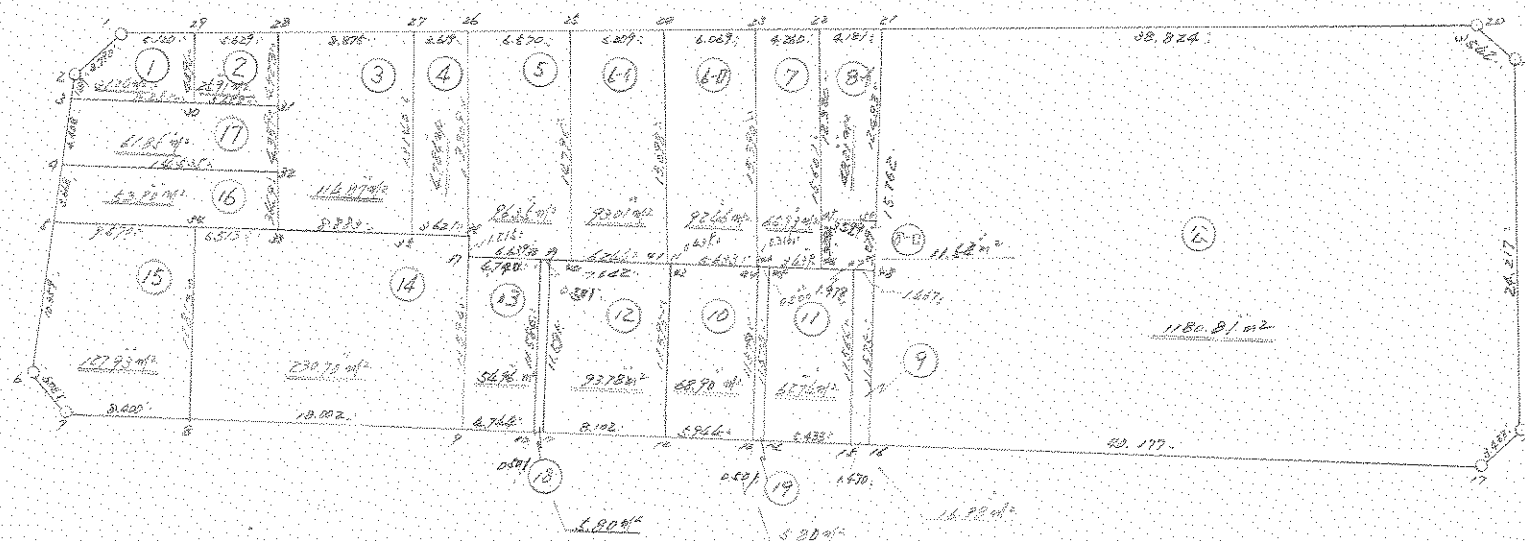


街 区 地 原 子 一 覽 表 (29 街 区)



計算面積 = m²
 角切面積 =
 換地面積 =



29
街 区

*** メンピキ ケイケン ()

NO	X	Y	DX	DY	D M D	2S	A	L
533 (1)	-63732.382	-90611.974						
			-0.477	-3.760	-3.760	1.793520	262-46-12	3.790
534 (2)	-63732.859	-90615.734						
			-1.270	-1.114	-8.634	10.965180	221-15-22	1.689
535 (3)	-63734.129	-90616.848						
			-3.290	-2.934	-12.682	41.723780	221-43-35	4.408
536 (4)	-63737.419	-90619.782						
			-2.740	-2.438	-18.054	49.467960	221-39-43	3.668
537 (5)	-63740.159	-90622.220						
			-7.727	-6.899	-27.391	211.650257	221-45-35	10.359
511 (6)	-63747.886	-90629.119						
			-3.328	0.373	-33.917	112.875776	173-36-18	3.349
512 (7)	-63751.214	-90628.746						
			-4.893	6.828	-26.716	130.721388	125-37-32	8.400
513 (8)	-63756.107	-90621.918						
			-10.506	14.618	-5.270	55.366620	125-42-18	18.002
553 (9)	-63766.613	-90607.300						
			-2.764	3.856	13.204	-36.495856	125-37-59	4.744
554 (10)	-63769.377	-90603.444						
			-0.297	0.403	17.463	-5.186511	126-23-21	0.501
555 (11)	-63769.674	-90603.041						
			-4.731	6.577	24.443	-115.639833	125-43-42	8.102
556 (12)	-63774.405	-90596.464						
			-3.478	4.820	35.840	-124.651520	125-48-48	5.944
557 (13)	-63777.883	-90591.644						
			-0.293	0.407	41.067	-12.032631	125-45-01	0.501
558 (14)	-63778.176	-90591.237						
			-3.169	4.413	45.887	-145.415903	125-40-56	5.433
559 (15)	-63781.345	-90586.824						
			-0.865	1.188	51.488	-44.537120	126-03-32	1.470
560 (16)	-63782.210	-90585.636						
			-23.457	32.618	85.294	-2000.741358	125-43-18	40.177
528 (17)	-63805.667	-90553.018						
			0.673	3.366	121.278	81.620094	78-41-36	3.433
529 (18)	-63804.994	-90549.652						
			20.284	13.230	137.874	2796.636216	33-06-50	24.217
504 (19)	-63784.710	-90536.422						
			3.463	-0.742	150.362	520.703606	347-54-23	3.542
503 (20)	-63781.247	-90537.164						
			21.228	-32.507	117.113	2486.074764	303-08-44	38.824
492 (21)	-63760.019	-90569.671						
			2.289	-3.499	81.107	185.653923	303-11-32	4.181

NO		X	Y	DX	DY	D M D	2S	A	L
493	(22)	-63757.730	-90573.170						
				2.328	-3.568	74.040	172.365120	303-07-23	4.260
494	(23)	-63755.402	-90576.738						
				3.319	-5.081	65.391	217.032729	303-09-12	6.069
495	(24)	-63752.083	-90581.819						
				3.377	-5.210	55.100	186.072700	302-57-01	6.209
496	(24)	-63748.706	-90587.029						
				3.615	-5.486	44.404	160.520460	303-22-58	6.570
497	(26)	-63745.091	-90592.515						
				1.971	-3.035	35.883	70.725393	303-00-02	3.619
530	(27)	-63743.120	-90595.550						
				4.850	-7.432	25.416	123.267600	303-07-40	8.875
531	(28)	-63738.270	-90602.982						
				3.068	-4.719	13.265	40.697020	303-01-46	5.629
532	(29)	-63735.202	-90607.701						
				2.820	-4.273	4.273	12.049860	303-25-23	5.120
533	(/)	-63732.382	-90611.974						

TOTAL

2S 5183.283234

S 2591.641617

メータ 2591.641617 SQ METER

783.971589 ツボ

*** 測点データ (/)

NO	X	Y	DX	DY	D M D	ZS	A	L
533 (/)	-63732.382	-90611.974	-0.477	-3.760	-3.760	1.793520	202-48-12	3.790
534 (2)	-63732.859	-90615.734	-1.270	-1.114	-8.834	10.965180	221-15-22	1.689
535 (3)	-63734.129	-90616.848	-4.834	6.888	-3.060	14.792040	125-51-32	8.252
1021 (20)	-63738.963	-90610.160	3.761	2.459	6.087	22.893207	33-10-38	4.494
532 (29)	-63735.202	-90607.701	2.820	-4.273	4.273	12.049860	303-25-23	5.120

TOTAL

ZS 62.493807

S 31.246903

測点 31.246903 / SQ METER

9.452138 ユニ

*** 測点データ (2)

NO	X	Y	DX	DY	D M D	ZS	A	L
532 (29)	-63735.202	-90607.701	-3.761	-2.459	-2.459	9.248299	213-10-38	4.494
1021 (20)	-63738.963	-90610.160	-3.254	4.584	-0.334	1.086836	125-22-10	5.622
1022 (21)	-63742.217	-90605.576	3.947	2.594	6.044	27.013288	33-18-48	4.723
531 (28)	-63738.270	-90602.982	3.068	-4.719	4.719	14.477892	303-01-46	5.629
532 (29)	-63735.202	-90607.701						

TOTAL

ZS 51.826295

S 25.913147

測点 25.913147 / SQ METER

7.838727 ユニ

*** 2014 0100 (0)

NO		X	Y	DX	DY	D M D	2S	A	L
531 (28)		-63758.270	-90602.982						
				-3.947	-2.594	-2.594	10.238518	213-18-48	4.723
1022 (27)		-63742.217	-90605.576						
				-3.652	-2.380	-7.565	27.638336	213-05-32	4.359
1014 (22)		-63745.869	-90607.956						
				-3.058	-1.991	-11.939	36.509462	213-04-02	3.649
1013 (20)		-63748.927	-90609.947						
				-5.192	7.208	-6.722	34.900624	125-45-56	8.083
1015 (24)		-63754.119	-90602.739						
				10.999	7.189	7.675	84.417325	33-10-08	13.140
530 (27)		-63743.120	-90595.550						
				4.850	-7.432	7.432	36.045200	303-07-40	8.075
531 (28)		-63738.270	-90602.982						
TOTAL									
2S							229.749465		
S							114.874732		
合計							114.874732	SQ METER	
							34.749606	㎡	

*** 2014 0100 (0)

NO		X	Y	DX	DY	D M D	2S	A	L
530 (27)		-63743.120	-90595.550						
				-10.999	-7.189	-7.189	79.071811	213-10-08	13.140
1015 (24)		-63754.119	-90602.739						
				-2.112	2.941	-11.437	24.154944	125-40-59	3.621
1016 (26)		-63756.231	-90599.798						
				11.140	7.203	-1.213	-13.512820	33-10-32	13.309
497 (26)		-63745.091	-90592.515						
				1.971	-3.035	3.035	5.981985	303-00-02	3.619
530 (27)		-63743.120	-90595.550						
TOTAL									
2S							95.695920		
S							47.847960		
合計							47.847960	SQ METER	
							14.474007	㎡	

*** 測点 9130 (5)

NO	X	Y	DX	DY	D M D	ZS	A	L
497 (26)	-63745.091	-90592.515						
			-11.140	-7.203	-7.283	61.132620	213-10-32	13.309
1016 (36)	-63756.231	-90599.798						
			-0.932	-0.716	-15.282	15.006924	216-05-48	1.215
1017 (37)	-63757.213	-90600.514						
			-3.877	5.389	-10.609	41.131093	125-43-56	6.633
1018 (40)	-63761.090	-90595.125						
			12.384	6.096	2.876	35.616384	33-10-26	14.796
496 (25)	-63748.706	-90587.029						
			3.615	-5.486	5.486	19.831890	303-22-58	6.570
497 (26)	-63745.091	-90592.515						

TOTAL

ZS 192.718911
S 96.359455

測点 96.359455 / SQ METER

29.148735 ㎡

*** 測点 9130 (3-7)

NO	X	Y	DX	DY	D M D	ZS	A	L
496 (25)	-63748.706	-90587.029						
			-12.384	-6.096	-8.096	100.260864	213-10-26	14.796
1018 (40)	-63761.090	-90595.125						
			-3.646	5.069	-11.123	40.554458	125-43-35	6.244
1019 (41)	-63764.736	-90590.056						
			12.653	8.237	2.183	27.621499	33-03-50	15.096
495 (24)	-63752.083	-90581.819						
			3.377	-5.210	5.210	17.594170	302-57-01	6.209
496 (25)	-63748.706	-90587.029						

TOTAL

ZS 186.030991
S 93.015495

測点 93.015495 / SQ METER

28.137187 ㎡

*** 測点データ (A - F)

NO	X	Y	DX	DY	D M D	ZS	A	L
495 (28)	-63752.083	-90581.819	-12.653	-8.237	-8.237	104.222761	213-03-50	15.098
1019 (41)	-63764.736	-90590.056	-0.253	0.359	-16.115	4.077095	125-10-25	0.439
1020 (42)	-63764.989	-90589.697	-3.308	4.559	-11.197	37.039676	125-57-52	5.633
1074 (40)	-63768.297	-90585.138	12.895	8.400	1.762	22.720990	33-04-51	15.390
494 (20)	-63755.402	-90576.738	3.319	-5.081	5.081	16.863839	303-09-12	6.069
495 (24)	-63752.083	-90581.819						

TOTAL
 ZS 134.924361
 S 92.462180

 測点 92.462180 / SQ METER
 27.969809 9M"

*** 測点データ (G)

NO	X	Y	DX	DY	D M D	ZS	A	L
494 (20)	-63755.402	-90576.738	-12.895	-8.400	-8.400	108.318000	213-04-51	15.390
1074 (44)	-63768.297	-90585.138	-0.136	0.256	-16.544	3.077184	126-00-03	0.316
1073 (48)	-63768.483	-90584.882	-0.294	0.405	-15.683	4.669602	125-58-37	0.500
1072 (46)	-63768.777	-90584.477	-2.020	2.783	-12.695	25.643900	125-56-25	3.439
1007 (48)	-63770.797	-90581.694	13.067	8.524	-1.388	-18.136996	33-07-03	15.601
493 (22)	-63757.730	-90573.170	2.328	-3.568	3.568	8.306304	303-07-23	4.260
494 (20)	-63755.402	-90576.738						

TOTAL
 ZS 131.877994
 S 65.938997

 測点 65.938997 / SQ METER
 19.946546 9M"

*** メンピキ ケイザン (8-ロ)

NO	X	Y	DX	DY	D M D	2S	A	L
1102 (48)	-63768.049	-90579.901						
			-2.748	-1.793	-1.793	4.927164	213-07-24	3.281
1007 (46)	-63770.797	-90581.694						
			-1.151	1.609	-1.977	2.275527	125-34-41	1.978
1006 (47)	-63771.948	-90580.085						
			-0.854	1.193	0.825	0.704550	125-35-48	1.467
1003 (48)	-63772.802	-90578.892						
			2.659	1.918	3.936	10.465824	35-48-14	3.279
1103 (40)	-63770.143	-90576.974						
			2.094	-2.927	2.927	6.129138	305-34-49	3.599
1102 (49)	-63768.049	-90579.901						

TOTAL

2S 23.093103

S 11.546551

メンピキ 11.546551 / SQ METER

3.492831 ツホ"

*** メンピキ ケイザン (8-イ)

NO	X	Y	DX	DY	D M D	2S	A	L
493 (22)	-63757.730	-90573.170						
			-10.319	-6.731	-6.731	69.457189	213-06-58	12.320
1102 (49)	-63768.049	-90579.901						
			-2.094	2.927	-10.535	22.060290	125-34-49	3.599
1103 (40)	-63770.143	-90576.974						
			10.124	7.303	-0.305	-3.087820	35-48-18	12.483
492 (21)	-63760.019	-90569.671						
			2.289	-3.499	3.499	8.009211	303-11-32	4.181
493 (22)	-63757.730	-90573.170						

TOTAL

2S 96.438870

S 48.219435

メンピキ 48.219435 / SQ METER

14.586379 ツホ"

NO	X	Y	XA	YX	D M L	2S	A	L
1006 (47)	-63771.948	-90580.085	-9.397	-6.739	-6.739	63.326383	215-38-45	11.564
559 (15)	-63761.345	-90588.824	-0.865	1.188	-12.290	10.630850	126-03-32	1.470
560 (16)	-63762.210	-90585.636	9.408	6.744	-4.358	-41.000064	35-36-04	11.575
1005 (48)	-63772.802	-90578.892	0.854	-1.193	1.193	1.018822	305-35-48	1.467
1006 (47)	-63771.948	-90580.085						

TOTAL
 2S 33.975991
 S 16.987995

 XOLT 16.987995 - SC MEIER
 5.138863 2M

*** メンピキ ケイサン (/ 〇)

NO	X	Y	DX	DY	D M D	2S	A	L
1020 (42)	-63764.989	-90589.697	-9.416	-6.767	-6.767	63.718072	215-42-13	11.595
556 (12)	-63774.405	-90596.464	-3.478	4.820	-8.714	30.307292	125-48-48	5.944
557 (10)	-63777.883	-90591.644	9.400	6.762	2.868	26.959200	35-43-47	11.579
1073 (44 ^u)	-63768.483	-90584.882	0.186	-0.256	9.374	1.743564	306-00-03	0.316
1074 (44)	-63768.297	-90585.138	3.308	-4.559	4.559	15.081172	305-57-52	5.633
1020 (42)	-63764.989	-90589.697						

TOTAL

2S 137.809300

S 68.904650

メンピキ 68.904650 / SQ METER

20.843656 ツホ"

*** メンピキ ケイサン (/ 〇)

NO	X	Y	DX	DY	D M D	2S	A	L
1017 (07)	-63757.213	-90600.514	-9.400	-6.786	-6.786	63.788400	215-49-34	11.594
553 (08)	-63766.613	-90607.300	-2.764	3.856	-9.716	26.855024	125-37-59	4.744
554 (10)	-63769.377	-90603.444	9.396	6.778	0.918	8.625528	35-48-20	11.586
1104 (08)	-63759.981	-90596.666	2.768	-3.848	3.848	10.651264	305-43-44	4.740
1017 (07)	-63757.213	-90600.514						

TOTAL

2S 109.920216

S 54.960108

メンピキ 54.960108 / SQ METER

16.625432 ツホ"

*** マルチリソド (//)

NO	X	Y	DX	DY	D M D	ZS	A	L
1020 ()	-63764.989	-90589.697						
556 ()	-63774.405	-90596.464	-9.416	-6.767	-6.767	63.713072	215-42-13	11.595
557 ()	-63777.880	-90591.644	-3.475	4.820	-8.714	30.261150	125-47-24	5.942
1073 ()	-63768.433	-90584.882	9.397	6.762	2.068	26.950596	35-44-13	11.577
1074 ()	-63768.297	-90585.138	0.186	-0.256	9.374	1.743564	306-00-03	0.316
1020 ()	-63764.989	-90589.697	3.308	-4.559	4.559	15.081172	305-57-52	5.633

TOTAL

ZS 137.774554
S 68.887277

XJBT 68.887277 SQ METER

20.833401 DM³

*** マルチリソド (//)

NO	X	Y	DX	DY	D M D	ZS	A	L
1072 (45)	-63768.777	-90584.477						
558 (14)	-63776.176	-90591.237	-9.399	-6.760	-6.760	63.537240	215-43-29	11.578
559 (15)	-63781.345	-90586.824	-3.169	4.413	-9.107	28.860083	125-40-56	5.433
1006 (47)	-63771.948	-90580.055	9.397	6.739	2.045	19.216865	35-38-45	11.564
1007 (46)	-63770.797	-90581.694	1.151	-1.609	7.175	8.258425	305-34-41	1.978
1072 (45)	-63768.777	-90584.477	2.020	-2.783	2.783	5.621660	305-58-25	3.439

TOTAL

ZS 125.494273
S 62.747136

XJBT 62.747136 SQ METER

18.981008 DM³

*** 測点 9190 (/2)

NO	X	Y	DX	DY	D M D	2S	A	L
1105 (39)	-63760.274	-90596.260	-9.400	-6.781	-6.781	63.741400	215-46-22	11.591
555 (11)	-63769.674	-90603.041	-4.731	6.577	-6.505	33.046035	125-43-42	8.102
556 (12)	-63774.405	-90596.464	9.416	6.767	-6.359	59.876344	35-42-13	11.595
1020 (42)	-63764.989	-90589.697	0.253	-0.359	12.767	3.230051	305-10-25	0.439
1019 (41)	-63764.736	-90590.056	4.462	-6.204	6.204	27.682248	305-43-27	7.642
1105 (40)	-63760.274	-90596.260	0.000	0.000	0.000	0.000000	0-00-00	0.000
1105 (39)	-63760.274	-90596.260						

TOTAL
 2S 187.576078
 S 93.788039

 測点 93.788039 SQ METER
 28.370881 ㎡

*** 測点 9190 (/3)

NO	X	Y	DX	DY	D M D	2S	A	L
1017 ()	-63757.213	-90600.514	-9.400	-6.786	-6.786	63.788400	215-49-34	11.594
553 ()	-63766.613	-90607.300	-2.766	3.859	-9.713	28.866158	125-37-54	4.748
554 ()	-63769.379	-90603.441	9.397	6.776	0.522	3.664034	35-47-41	11.585
1104 ()	-63759.982	-90596.665	2.769	-3.849	3.849	10.657881	305-43-54	4.742
1017 ()	-63757.213	-90600.514						

TOTAL
 2S 109.976473
 S 54.988236

 測点 54.988236 SQ METER
 16.633941 ㎡

*** 2017 7 19 (14)

NO	X	Y	DX	DY	D M D	ZS	A	L
1012 (14)	-63745.713	-90614.426						
			-10.394	-7.492	-7.492	77.871848	215-47-03	12.613
513 (8)	-63756.107	-90621.918						
			-10.506	14.618	-0.366	3.845196	125-42-18	18.002
553 (9)	-63766.613	-90607.300						
			9.400	6.786	21.038	197.757200	35-49-34	11.594
1017 (17)	-63757.213	-90600.514						
			0.982	-0.716	28.540	28.026280	36-05-48	1.215
1016 (16)	-63756.231	-90599.798						
			2.112	-2.941	26.315	55.577280	305-40-59	3.621
1015 (15)	-63754.119	-90602.739						
			5.192	-7.208	16.166	83.933872	305-45-56	8.883
1013 (13)	-63748.927	-90609.947						
			3.214	-4.479	4.479	14.395508	305-39-44	5.513
1012 (14)	-63745.713	-90614.426						

TOTAL

ZS 461.407182
S 230.703591

2017 230.703591 SQ METER

69.787836 9M

*** 2017 7 19 (15)

NO	X	Y	DX	DY	D M D	ZS	A	L
537 (15)	-63740.159	-90622.220						
			-7.727	-6.899	-6.899	53.308573	221-45-35	10.359
511 (16)	-63747.886	-90629.119						
			-3.328	0.373	-13.425	44.678400	173-36-18	3.349
512 (17)	-63751.214	-90626.746						
			-4.293	6.828	-6.224	30.454032	125-37-32	8.400
513 (18)	-63756.107	-90621.918						
			10.394	7.492	8.096	84.149824	35-47-03	12.613
1012 (14)	-63745.713	-90614.426						
			5.554	-7.794	7.794	43.287876	305-26-25	9.570
537 (15)	-63740.159	-90622.220						

TOTAL

ZS 255.878705
S 127.939352

2017 127.939352 SQ METER

38.701654 9M

*** 3007 7150 (4)

NO	X	Y	DX	DY	D M D	2S	A	L
536 (4)	-63737.419	-90619.782						
			-2.740	-2.438	-2.438	6.630120	221-39-43	3.668
537 (4)	-63740.159	-90622.220						
			-5.554	7.794	2.918	-16.206572	125-28-25	9.570
1012 (4)	-63745.713	-90614.426						
			-3.214	4.479	15.191	-48.823874	125-39-44	5.513
1013 (4)	-63748.927	-90609.947						
			3.058	1.991	21.661	66.239338	33-04-02	5.649
1014 (4)	-63745.869	-90607.956						
			8.450	-11.826	11.826	99.929700	305-32-49	14.535
536 (4)	-63737.419	-90619.782						

TOTAL

2S 107.813712
S 53.909356

3007 53.909356 SC METER

16.307580 ユニ

*** 3007 7150 (4)

NO	X	Y	DX	DY	D M D	2S	A	L
535 (4)	-63734.129	-90616.848						
			-3.290	-2.934	-2.934	9.652860	221-43-35	4.408
536 (4)	-63737.419	-90619.782						
			-8.450	11.826	5.958	-50.345100	125-32-49	14.535
1014 (4)	-63745.869	-90607.956						
			3.652	2.380	20.164	73.638928	33-05-32	4.359
1022 (4)	-63742.217	-90605.576						
			3.254	-4.504	17.960	58.441840	305-22-10	5.622
1021 (4)	-63738.963	-90610.160						
			4.834	-6.688	6.688	32.329792	305-51-32	8.252
535 (4)	-63734.129	-90616.848						

TOTAL

2S 123.718320
S 61.859160

3007 61.859160 SC METER

18.712395 ユニ

*** メンピキ ケイサン (18)

29

NO	X	Y	DX	DY	D M D	2S	A	L
1104 (18)	-63759.981	-90596.666						
			-9.396	-6.778	-6.778	63.686088	215-48-20	11.586 ✓
554 (18)	-63769.377	-90603.444						
			-0.297	0.403	-13.153	3.906441	126-23-21	0.501 ✓
555 (11)	-63769.674	-90603.041						
			9.400	6.781	-5.969	-56.108600	35-48-22	11.591 ✓
1105 (18)	-63760.274	-90596.260						
			0.293	-0.406	0.406	0.118958	305-49-01	0.501 ✓
1104 (18)	-63759.981	-90596.666						

TOTAL
 2S 11.602887
 S 5.801443

 メンピキ 5.801443 / SQ METER
 1.754936 ツホ"

*** メンピキ ケイサン (16)

29

NO	X	Y	DX	DY	D M D	2S	A	L
1073 (44)	-63768.483	-90584.882						
			-9.400	-6.762	-6.762	63.562800	215-43-47	11.579 ✓
557 (18)	-63777.883	-90591.644						
			-0.293	0.407	-13.117	3.843281	125-45-01	0.501 ✓
558 (14)	-63778.176	-90591.237						
			9.399	6.760	-5.950	-55.924050	35-43-29	11.578 ✓
1072 (44)	-63768.777	-90584.477						
			0.294	-0.405	0.405	0.119070	305-58-37	0.500 ✓
1073 (44)	-63768.483	-90584.882						

TOTAL
 2S 11.601101
 S 5.800550

 メンピキ 5.800550 / SQ METER
 1.754666 ツホ"

NO		X	Y	DX	DY	D.M.D	ZS	A	L
492	(21)	-63760.019	-90569.671						
				-12.783	-9.221	-9.221	117.672043	215-48-17	15.782
1003	(40)	-63772.602	-90578.692						
				-9.408	-6.744	-25.186	236.949888	215-38-04	11.575
560	(16)	-63782.210	-90585.636						
				-23.457	32.618	0.685	-16.138416	125-43-18	40.177
528	(17)	-63805.667	-90553.018						
				0.673	3.366	36.672	24.680256	78-41-36	3.433
529	(18)	-63804.994	-90549.652						
				20.284	13.230	53.268	1080.488112	33-06-50	24.217
504	(19)	-63784.710	-90538.422						
				3.463	-0.742	65.756	227.713028	347-54-23	3.542
503	(20)	-63781.247	-90537.164						
				21.228	-32.507	32.507	690.058596	303-08-44	38.824
492	(21)	-63760.019	-90569.671						

TOTAL
 ZS 2361.623507
 S 1180.811753

 XOFF 1180.811753 / SQ METER
 357.195555 9m"