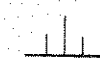
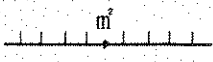
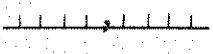
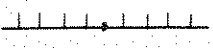
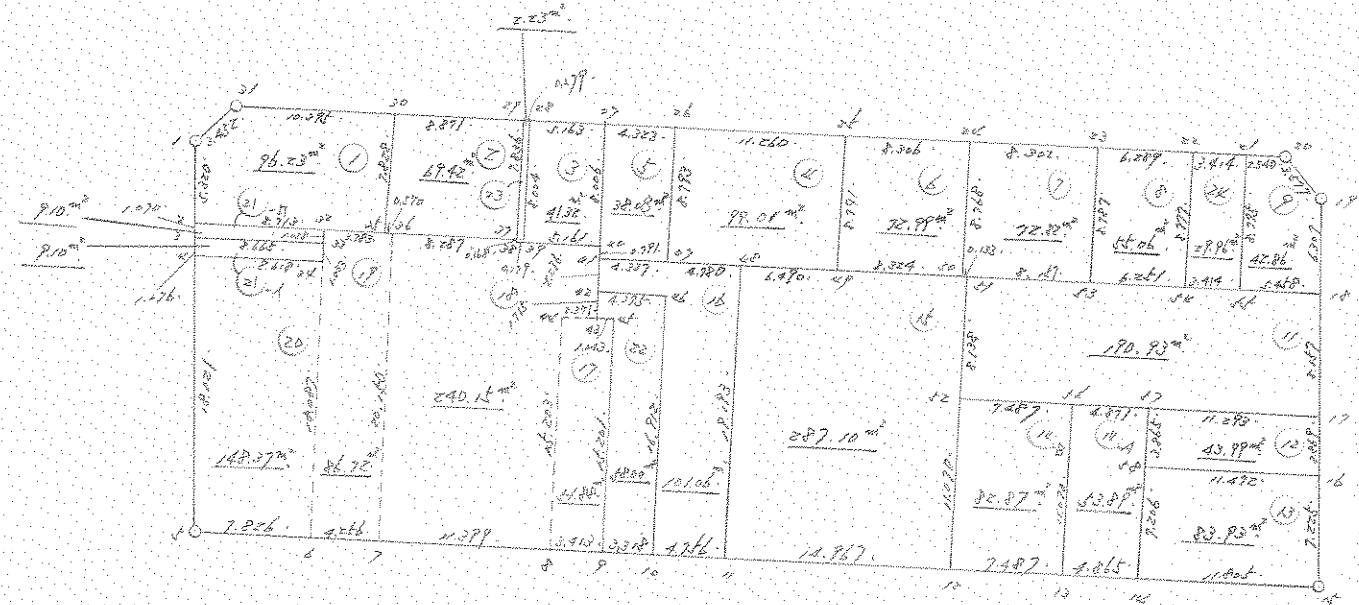


# 街 区 地 原 子 一 覽 表 ( 27 街 区 )



計算面積 =   
 角切面積 =   
 換地面積 = 



27 街 区

\*\*\* 木下キヤノン (27街区)

NO		X	Y	DX	DY	D M D	ZS	A	L
1886	( / )	-63817.772	-90550.822						
1887	( 2 )	-63822.225	-90553.733	-4.453	-2.911	-2.911	12.962683	213-10-24	5.320
1888	( ω )	-63823.121	-90554.317	-0.896	-0.584	-6.406	5.739776	213-05-45	1.070
1889	( 4 )	-63824.022	-90554.905	-0.901	-0.588	-7.578	6.827778	213-07-44	1.076
1890	( 5 )	-63839.112	-90564.757	-15.090	-9.852	-13.018	271.891620	213-08-23	18.021
1891	( 6 )	-63843.686	-90558.407	-4.574	6.350	-21.520	98.432480	125-45-57	7.826
1892	( 7 )	-63846.174	-90554.954	-2.438	3.453	-11.717	29.151896	125-46-26	4.256
1893	( 8 )	-63852.833	-90545.702	-6.659	9.252	0.988	-6.579092	125-44-38	11.399
1894	( 9 )	-63854.825	-90542.931	-1.992	2.771	13.011	-25.917912	125-42-41	3.413
1895	( 10 )	-63856.760	-90540.236	-1.935	2.695	18.477	-35.752995	125-40-42	3.318
1896	( 11 )	-63859.530	-90536.370	-2.770	3.866	25.038	-69.355260	125-37-18	4.756
1897	( 12 )	-63868.273	-90524.222	-8.743	12.148	41.052	-358.917636	125-44-34	14.967
1898	( 13 )	-63872.650	-90518.148	-4.377	6.074	59.274	-259.442298	125-46-37	7.487
1899	( 14 )	-63875.495	-90514.201	-2.845	3.947	69.295	-197.144275	125-47-03	4.865
1900	( 15 )	-63882.407	-90504.631	-6.912	9.570	82.812	-572.396544	125-50-20	11.805
1901	( 16 )	-63876.358	-90500.680	6.049	3.951	96.333	582.718317	33-09-04	7.225
1902	( 17 )	-63873.118	-90498.565	3.240	2.115	102.399	331.772760	33-08-08	3.869
1903	( 18 )	-63866.288	-90494.105	6.830	4.460	108.974	744.292420	33-08-41	8.157
1904	( 19 )	-63861.003	-90490.663	5.285	3.442	116.876	617.689660	33-04-31	6.307
1905	( 20 )	-63857.487	-90491.319	3.516	-0.656	119.662	420.731592	349-25-53	3.577
1906	( 21 )	-63856.003	-90493.380	1.484	-2.061	116.945	173.546380	305-45-19	2.540
				1.995	-2.771	112.113	223.665435	305-45-08	3.414

NO		X	Y	DX	DY	D M D	2S	A	L
1907	( 22 )	-63854.008	-90496.151						
1908	( 20 )	-63850.331	-90501.253	3.677	-5.102	104.240	383.290480	305-46-49	6.289
1909	( 24 )	-63845.483	-90507.993	4.848	-6.740	92.398	447.945504	305-43-37	8.302
1910	( 28 )	-63840.631	-90514.734	4.852	-6.741	78.917	382.905284	305-44-43	8.306
1911	( 26 )	-63834.053	-90523.873	6.578	-9.139	63.037	414.657386	305-44-43	11.260
1912	( 27 )	-63831.530	-90527.383	2.523	-3.510	50.388	127.128924	305-42-31	4.323
1913	( 20 )	-63828.517	-90531.576	3.013	-4.193	42.685	128.609905	305-42-01	5.163
1914	( 29 )	-63828.354	-90531.803	0.163	-0.227	38.265	6.237195	305-40-50	0.279
1915	( 20 )	-63823.180	-90539.009	5.174	-7.206	30.832	159.524768	305-40-44	8.871
1916	( 01 )	-63817.095	-90547.437	6.085	-8.428	15.198	92.479830	305-49-45	10.395
1386	( / )	-63817.772	-90550.822	-0.677	-3.385	3.385	-2.291645	258-41-24	3.452

TOTAL

2S 4134.404416

S 2067.202208

-----  
 x y z 2067.202208 SQ METER

625.328667 ヲホ

\*\*\* 測点データ ( / )

NO	X	Y	DX	DY	D.M.D	2S	A	L
1886 ( / )	-63817.772	-90550.822						
1887 ( 2 )	-63822.225	-90553.733	-4.453	-2.911	-2.911	12.962683	213-10-24	5.320v
1920 ( 2f )	-63829.526	-90543.592	-7.301	10.141	4.319	-31.533019	125-45-07	12.496v
1915 ( 20 )	-63823.180	-90539.009	6.346	4.583	19.043	120.846878	35-50-11	7.828v
1916 ( 21 )	-63817.095	-90547.437	6.085	-8.428	15.198	92.479830	305-49-45	10.395v
1886 ( / )	-63817.772	-90550.822	-0.677	-3.385	3.385	-2.291645	258-41-24	3.452v

TOTAL

2S 192.464727  
S 96.232363

-----  
測点 96.232363v SQ METER

29.110239 ユニ

\*\*\* 測点データ ( 2 )

NO	X	Y	DX	DY	D.M.D	2S	A	L
1915 ( 20 )	-63823.180	-90539.009						
1920 ( 2f )	-63829.526	-90543.592	-6.346	-4.583	-4.583	29.083713	215-50-11	7.828v
1922 ( 2f )	-63834.698	-90536.402	-5.172	7.190	-1.976	10.219872	125-43-43	8.857v
1914 ( 21 )	-63828.354	-90531.803	6.344	4.599	9.813	62.253672	35-56-23	7.836v
1915 ( 20 )	-63823.180	-90539.009	5.174	-7.206	7.206	37.283844	305-40-44	8.871v

TOTAL

2S 138.841106  
S 69.420553

-----  
測点 69.420553v SQ METER

20.999717 ユニ

\*\*\* 測点データ ( W )

NO	X	Y	DX	DY	D M D	2S	A	L
1913 ( 20 )	-63828.517	-90531.576						
1924 ( 30 )	-63834.997	-90536.274	-6.480	-4.698	-4.698	30.443040	215-56-32	8.004✓
1925 ( 40 )	-63838.011	-90532.084	-3.014	4.190	-5.206	15.690884	125-43-43	5.161✓
1912 ( 27 )	-63831.530	-90527.383	6.481	4.701	3.685	23.882485	35-57-19	8.006✓
1913 ( 28 )	-63828.517	-90531.576	3.013	-4.193	4.193	12.633509	305-42-01	5.163✓

TOTAL  
 2S 82.649918  
 S 41.324959  
 -----  
 測点 41.324959✓ SQ METER  
 12.500800 ユニツ

\*\*\* 測点データ ( 4 )

NO	X	Y	DX	DY	D M D	2S	A	L
1911 ( 26 )	-63834.053	-90523.873						
1932 ( 47 )	-63841.181	-90529.022	-7.128	-5.149	-5.149	36.702072	215-50-35	8.793✓
1933 ( 48 )	-63843.967	-90525.138	-2.786	3.884	-6.414	17.869404	125-39-07	4.780✓
1934 ( 49 )	-63847.764	-90519.873	-3.797	5.265	2.735	-10.384795	125-47-54	6.491✓
1910 ( 25 )	-63840.631	-90514.734	7.133	5.139	13.139	93.720487	35-46-16	8.791✓
1911 ( 26 )	-63834.053	-90523.873	6.578	-9.139	9.139	60.116342	305-44-43	11.260✓

TOTAL  
 2S 198.023510  
 S 99.011755  
 -----  
 測点 99.011755✓ SQ METER  
 29.951055 ユニツ

\*\*\* マジキガイド ( 4 )

NO		X	Y	DX	DY	D M D	ZS	A	L
1912	( 27 )	-63831.530	-90527.383						
1926	( 46 )	-63838.653	-90532.546	-7.123	-5.163	-5.163	36.776049	215-56-09	8.797v
1932	( 47 )	-63841.181	-90529.022	-2.528	3.524	-6.802	17.195456	125-39-16	4.337v
1911	( 26 )	-63834.053	-90523.873	7.128	5.149	1.871	13.336488	35-50-35	8.793v
1912	( 27 )	-63831.530	-90527.383	2.523	-3.510	3.510	8.855730	305-42-31	4.323v

TOTAL

ZS 76.163723  
S 38.081861

マジキ 38.081861v SQ METER

11.519763 ユニ

\*\*\* マジキガイド ( 6 )

NO		X	Y	DX	DY	D M D	ZS	A	L
1910	( 27 )	-63840.631	-90514.734						
1934	( 4P )	-63847.761	-90519.873	-7.130	-5.139	-5.139	36.641070	215-46-57	8.789v
1935	( 50 )	-63852.607	-90513.105	-4.846	6.768	-3.510	17.009460	125-36-12	8.324v
1909	( 24 )	-63845.483	-90507.993	7.124	5.112	8.370	59.627880	35-39-44	8.768v
1910	( 27 )	-63840.631	-90514.734	4.852	-6.741	6.741	32.707332	305-44-43	8.306v

TOTAL

ZS 145.985742  
S 72.992871

マジキ 72.992871v SQ METER

22.080343 ユニ

\*\*\* 測点番号 ( 7 )

NO	X	Y	DX	DY	D M D	ZS	A	L
1909 ( 24 )	-63845.483	-90507.993	-7.124	-5.112	-5.112	36.417888	215-39-44	8.768V
1935 ( 60 )	-63852.607	-90513.105	-0.079	0.107	-10.117	0.799243	126-26-21	0.133V
1936 ( 41 )	-63852.686	-90512.998	-4.777	6.612	-3.398	16.232246	125-50-50	8.157V
1938 ( 60 )	-63857.463	-90506.386	7.132	5.133	8.347	59.530804	35-44-35	8.787V
1908 ( 20 )	-63850.331	-90501.253	4.848	-6.740	6.740	32.675520	305-43-37	8.302V
1909 ( 24 )	-63845.483	-90507.993						

TOTAL

ZS 145.655701  
S 72.827850

測点 72.827850V SQ METER

22.030424 ヴ

\*\*\* 測点番号 ( 8 )

NO	X	Y	DX	DY	D M D	ZS	A	L
1908 ( 20 )	-63850.331	-90501.253	-7.132	-5.133	-5.133	36.608556	215-44-35	8.787V
1938 ( 60 )	-63857.463	-90506.386	-3.647	5.077	-5.189	18.924283	125-41-28	6.251V
1939 ( 60 )	-63861.110	-90501.309	7.102	5.158	5.046	35.836692	35-59-24	8.777V
1907 ( 22 )	-63854.008	-90496.151	3.677	-5.102	5.102	18.760054	305-46-49	6.289V
1908 ( 20 )	-63850.331	-90501.253						

TOTAL

ZS 110.129585  
S 55.064792

測点 55.064792V SQ METER

16.657099 ヴ

\*\*\* 変位データ ( ① )

NO	X	Y	DX	DY	D M D	ZS	A	L
1906 ( ② )	-63856.003	-90493.380						
1940 ( ④ )	-63863.103	-90498.537	-7.100	-5.157	-5.157	36.614700	215-59-32	8.775v
1903 ( ⑩ )	-63866.288	-90494.105	-3.185	4.432	-5.682	18.734170	125-42-09	5.458v
1904 ( ⑪ )	-63861.003	-90490.663	5.285	3.442	1.992	10.527720	33-04-31	6.307v
1905 ( ⑫ )	-63857.487	-90491.319	3.516	-0.656	4.778	16.799448	349-25-53	3.577v
1906 ( ⑬ )	-63856.003	-90493.380	1.484	-2.061	2.061	3.058524	305-45-19	2.540v

TOTAL

ZS 85.734562

S 42.867281

変位 42.867281V SQ METER

12.967352 ヴ

\*\*\* 変位データ ( ② )

NO	X	Y	DX	DY	D M D	ZS	A	L
1936 ( ① )	-63852.686	-90512.998						
1937 ( ② )	-63859.290	-90517.753	-6.604	-4.755	-4.755	31.402020	215-45-16	8.138v
1902 ( ⑥ )	-63873.118	-90498.565	-13.823	19.188	9.678	-133.827384	125-46-43	23.651v
1903 ( ⑩ )	-63866.288	-90494.105	6.830	4.460	33.326	227.616580	33-08-41	8.157v
1940 ( ⑬ )	-63863.103	-90498.537	3.185	-4.432	33.354	106.232490	305-42-09	5.458v
1939 ( ⑭ )	-63861.110	-90501.309	1.993	-2.772	26.150	52.116950	305-42-55	3.414v
1938 ( ⑮ )	-63857.463	-90506.336	3.647	-5.077	18.301	66.743747	305-41-28	6.251v
1936 ( ⑯ )	-63852.686	-90512.998	4.777	-6.612	6.612	31.585524	305-50-50	8.157v

TOTAL

ZS 381.869927

S 190.934963

変位 190.934963V SQ METER

57.757826 ヴ



\*\*\* マルチポイント ( 12 )

NO	X	Y	DX	DY	D M D	2S	A	L
1942 ( 12 )	-63866.515	-90507.727						
1943 ( 12 )	-63869.650	-90509.987	-3.135	-2.260	-2.260	7.085100	215-47-15	3.865v
1901 ( 16 )	-63876.358	-90500.680	-6.708	9.307	4.787	-32.111196	125-46-56	11.472v
1902 ( 17 )	-63873.113	-90498.565	3.240	2.115	16.209	52.517160	33-08-08	3.869v
1942 ( 17 )	-63866.515	-90507.727	6.603	-9.162	9.162	60.496686	305-46-48	11.293v

TOTAL

2S 87.987750  
S 43.993875

マルチ 43.993875v SQ METER

13.308147 ユニ

\*\*\* マルチポイント ( 10 )

NO	X	Y	DX	DY	D M D	2S	A	L
1943 ( 14 )	-63869.650	-90509.987						
1899 ( 14 )	-63875.495	-90514.201	-5.845	-4.214	-4.214	24.630830	215-47-24	7.206v
1900 ( 14 )	-63882.407	-90504.631	-6.912	9.570	1.142	-7.893504	125-50-20	11.805v
1901 ( 16 )	-63876.358	-90500.680	6.049	3.951	14.663	88.696487	33-09-04	7.225v
1943 ( 16 )	-63869.650	-90509.987	6.708	-9.307	9.307	62.431356	305-46-56	11.472v

TOTAL

2S 167.865169  
S 83.932584

マルチ 83.932584v SQ METER

25.389606 ユニ

\*\*\* 測点ライン ( A-A )

NO	X	Y	DX	DY	D M D	2S	A	L
1941 ( ✓6 )	-63863.667	-90511.679						
1898 ( ✓6 )	-63872.650	-90518.148	-8.983	-6.469	-6.469	58.111027	215-45-33	11.070v
1899 ( ✓4 )	-63875.495	-90514.201	-2.845	3.947	-8.991	25.579395	125-47-03	4.865v
1942 ( ✓7 )	-63866.515	-90507.727	8.980	6.474	1.430	12.841400	35-47-21	11.070v
1941 ( ✓6 )	-63863.667	-90511.679	2.848	-3.952	3.952	11.255296	305-46-42	4.871

TOTAL

2S 107.787118  
S 53.893559

測点 53.893559 SQ METER

16.302801 ッホ"

\*\*\* 測点ライン ( A-B )

NO	X	Y	DX	DY	D M D	2S	A	L
1937 ( ✓2 )	-63859.290	-90517.753						
1897 ( ✓ )	-63866.273	-90524.222	-8.983	-6.469	-6.469	58.111027	215-45-33	11.070
1898 ( ✓12 )	-63872.650	-90518.148	-4.377	6.074	-6.864	30.043728	125-46-37	7.487
1941 ( ✓6 )	-63863.667	-90511.679	8.983	3.469	5.679	51.014457	35-45-33	11.070
1937 ( ✓2 )	-63859.290	-90517.753	4.377	-6.074	6.074	26.585898	305-46-37	7.487

TOTAL

2S 165.755110  
S 82.877555

測点 82.877555 SQ METER

25.070460 ッホ"

\*\*\* 測点一覧 ( 15 )

NO	X	Y	DX	DY	D M D	ZS	A	L
1933 ( 48 )	-63843.967	-90525.138						
1896 ( 11 )	-63859.530	-90536.370	-15.563	-11.232	-11.232	174.803616	215-49-06	19.193 <sub>v</sub>
1897 ( 12 )	-63868.273	-90524.222	-8.743	12.148	-10.316	90.192788	125-44-34	14.967 <sub>v</sub>
1936 ( 41 )	-63852.686	-90512.998	15.587	11.224	13.056	203.503872	35-45-26	19.208 <sub>v</sub>
1935 ( 40 )	-63852.607	-90513.105	0.079	-0.107	24.173	1.909667	306-26-21	0.133 <sub>v</sub>
1934 ( 4P )	-63847.761	-90519.873	4.846	-6.768	17.298	83.826108	305-36-12	8.324 <sub>v</sub>
1933 ( 48 )	-63843.967	-90525.138	3.794	-5.265	5.265	19.975410	305-46-37	6.490 <sub>v</sub>

TOTAL

ZS 574.211461

S 287.105730

測点 287.105730<sub>v</sub> SQ METER

86.849483 ユ<sub>テ</sub>

\*\*\* 測点一覧 ( 16 )

NO	X	Y	DX	DY	D M D	ZS	A	L
1926 ( 41 )	-63838.653	-90532.546						
1927 ( 42 )	-63840.501	-90533.875	-1.848	-1.329	-1.329	2.455992	215-43-19	2.276 <sub>v</sub>
1931 ( 46 )	-63843.057	-90530.324	-2.556	3.551	0.893	-2.282508	125-44-46	4.375 <sub>v</sub>
1895 ( 10 )	-63856.760	-90540.236	-13.703	-9.912	-5.468	74.928004	215-52-48	16.912 <sub>v</sub>
1896 ( 11 )	-63859.530	-90536.370	-2.770	3.866	-11.514	31.893780	125-37-18	4.756 <sub>v</sub>
1933 ( 48 )	-63843.967	-90525.138	15.563	11.232	3.584	55.777792	35-49-06	19.193 <sub>v</sub>
1932 ( 47 )	-63841.181	-90529.022	2.786	-3.884	10.932	30.456552	305-39-07	4.780 <sub>v</sub>
1926 ( 41 )	-63838.653	-90532.546	2.528	-3.524	3.524	8.908672	305-39-16	4.337 <sub>v</sub>

TOTAL

ZS 202.138284

S 101.069142

測点 101.069142<sub>v</sub> SQ METER

30.573415 ユ<sub>テ</sub>

\*\*\* 測点データ ( 17 )

NO	X	Y	DX	DY	D.M.D	ZS	A	L
1929 ( 44 )	-63840.508	-90536.801						
1893 ( 4 )	-63852.833	-90545.702	-12.325	-8.901	-8.901	109.704825	215-50-11	15.203v
1894 ( 4 )	-63854.825	-90542.931	-1.992	2.771	-15.031	29.941752	125-42-41	3.413v
1930 ( 44 )	-63842.502	-90534.030	12.323	8.901	-3.359	-41.392957	35-50-27	15.201v
1928 ( 40 )	-63841.893	-90534.877	0.609	-0.847	4.695	2.859255	305-42-59	1.043v
1929 ( 44 )	-63840.508	-90536.801	1.385	-1.924	1.924	2.664740	305-44-54	2.371v

TOTAL

ZS 103.777615

S 51.888807

測点 51.888807 SQ METER

15.696364 57"

\*\*\* 測点リスト ( 18 )

NO	X	Y	DX	DY	D M D	ZS	A	L
1921 ( 06 )	-63829.859	-90543.129						
1892 ( 7 )	-63846.174	-90554.954	-16.315	-11.825	-11.825	192.924875	215-56-04	20.150 <sub>v</sub>
1893 ( 8 )	-63852.833	-90545.702	-6.659	9.252	-14.398	95.876282	125-44-38	11.399 <sub>v</sub>
1929 ( 44 )	-63840.508	-90536.801	12.325	8.901	3.755	46.280375	35-50-11	15.203 <sub>v</sub>
1928 ( 40 )	-63841.893	-90534.877	-1.385	1.924	14.580	-20.193300	125-44-54	2.371 <sub>v</sub>
1925 ( 40 )	-63838.011	-90532.084	3.882	2.793	19.297	74.910954	35-44-03	4.782 <sub>v</sub>
1924 ( 09 )	-63834.997	-90536.274	3.014	-4.190	17.900	53.950600	305-43-43	5.161 <sub>v</sub>
1923 ( 08 )	-63834.834	-90536.500	0.163	-0.226	13.484	2.197892	305-48-02	0.279 <sub>v</sub>
1922 ( 37 )	-63834.698	-90536.402	0.136	0.098	13.356	1.816416	35-46-34	0.168 <sub>v</sub>
1921 ( 06 )	-63829.859	-90543.129	4.839	-6.727	6.727	32.551953	305-43-44	8.287 <sub>v</sub>

TOTAL

ZS 480.316047  
S 240.158023

測点 240.158023V SQ METER

72.647802 ユニ

\*\*\* 測点リスト ( 19 )

NO	X	Y	DX	DY	D M D	ZS	A	L
1917 ( 32 )	-63827.316	-90546.662						
1891 ( 6 )	-63843.686	-90558.407	-16.370	-11.745	-11.745	192.265650	215-39-30	20.148 <sub>v</sub>
1892 ( 7 )	-63846.174	-90554.954	-2.488	3.453	-20.037	49.852056	125-46-26	4.256 <sub>v</sub>
1921 ( 06 )	-63829.859	-90543.129	16.315	11.825	-4.759	-77.643085	35-56-04	20.150 <sub>v</sub>
1920 ( 04 )	-63829.526	-90543.592	0.333	-0.463	6.603	2.198799	305-43-28	0.570 <sub>v</sub>
1917 ( 32 )	-63827.316	-90546.662	2.210	-3.070	3.070	6.784700	305-44-56	3.783 <sub>v</sub>

TOTAL

ZS 173.458120  
S 86.729060

測点 86.729060V SQ METER

26.235540 ユニ

\*\*\* 変位計 変位計 ( 20 )

NO		X	Y	DX	DY	D M D	ZS	A	L
1889	( 4 )	-63824.022	-90554.905						
1890	( 4 )	-63839.112	-90564.757	-15.090	-9.852	-9.852	148.666680	213-08-23	18.021v
1891	( 6 )	-63843.686	-90558.407	-4.574	6.350	-13.354	61.081196	125-45-57	7.826v
1919	( 24 )	-63828.990	-90547.863	14.696	10.544	3.540	52.023840	35-39-30	18.087v
1889	( 4 )	-63824.022	-90554.905	4.968	-7.042	7.042	34.984656	305-12-08	8.618v

TOTAL

ZS 296.756372  
S 148.378186

変位計 148.378186 SQ METER

44.884401 ユニツ

\*\*\* 変位計 変位計 ( 21 )

NO		X	Y	DX	DY	D M D	ZS	A	L
1888	( 2 )	-63823.121	-90554.317						
1889	( 4 )	-63824.022	-90554.905	-0.901	-0.588	-0.588	0.529788	213-07-44	1.076v
1919	( 24 )	-63828.990	-90547.863	-4.968	7.042	5.866	-29.142288	125-12-08	8.618v
1918	( 22 )	-63828.151	-90547.261	0.839	0.602	13.510	11.334890	35-39-37	1.033v
1888	( 6 )	-63823.121	-90554.317	5.030	-7.056	7.056	35.491680	305-29-02	8.665v

TOTAL

ZS 18.214070  
S 9.107035

変位計 9.107035 SQ METER

2.754878 ユニツ

\*\*\* 時刻データ ( 21-0 )

NO		X	Y	DX	DY	D M D	ZS	A	L
1887	( 2 )	-63822.225	-90553.733						
				-0.896	-0.584	-0.584	0.523264	213-05-45	1.070v
1888	( 6 )	-63823.121	-90554.317						
				-5.030	7.056	5.888	-29.616640	125-29-02	8.665v
1913	( 00 )	-63828.151	-90547.261						
				0.835	0.599	13.543	11.308405	35-39-16	1.028v
1917	( 22 )	-63827.316	-90546.662						
				5.091	-7.071	7.071	35.998461	305-45-12	8.713v
1887	( 2 )	-63822.225	-90553.733						

TOTAL  
 ZS 18.213490  
 S 9.106745  
 -----  
 時刻 9.106745v SQ MEIER  
 2.754790 ユニ

\*\*\* 時刻データ ( 22 )

NO		X	Y	DX	DY	D M D	ZS	A	L
1927	( 42 )	-63840.501	-90533.875						
				-1.392	-1.002	-1.002	1.394784	215-44-51	1.715v
1928	( 40 )	-63841.893	-90534.877						
				-0.609	0.847	-1.157	0.704613	125-42-59	1.043v
1930	( 44 )	-63842.502	-90534.030						
				-12.323	-8.901	-9.211	113.507153	215-50-27	15.201v
1894	( 7 )	-63854.825	-90542.931						
				-1.935	2.695	-15.417	29.831895	125-40-42	3.318v
1895	( 10 )	-63856.760	-90540.236						
				13.703	9.912	-2.810	-38.505430	35-52-48	16.912v
1931	( 46 )	-63843.057	-90530.324						
				2.556	-3.551	3.551	9.076356	305-44-46	4.375v
1927	( 42 )	-63840.501	-90533.875						

TOTAL  
 ZS 116.009371  
 S 58.004685  
 -----  
 時刻 58.004685 SQ MEIER  
 17.546417 ユニ

\*\*\* 測点位置 ( 20 )

NO		X	Y	DX	DY	D M D	ZS	A	L
1914	( 2P )	-63828.354	-90531.803						
				-6.480	-4.697	-4.697	30.436560	215-56-11	8.003
1923	( 00 )	-63834.834	-90536.500						
				-0.163	0.226	-9.168	1.494384	125-48-02	0.279V
1924	( 3P )	-63834.997	-90536.274						
				6.480	4.698	-4.244	-27.501120	35-56-32	8.004V
1913	( 20 )	-63828.517	-90531.576						
				0.163	-0.227	0.227	0.037001	305-40-50	0.279V
1914	( 2P )	-63828.354	-90531.803						

TOTAL  
 ZS 4.466825  
 S 2.233412  
 -----  
 測点 2.233412V SQ METER  
 0.675607 ユニ

\*\*\* 測点位置 ( 24 )

NO		X	Y	DX	DY	D M D	ZS	A	L
1907	( 22 )	-63854.008	-90496.151						
				-7.102	-5.158	-5.158	36.632116	215-59-24	8.777V
1939	( 14 )	-63861.110	-90501.309						
				-1.993	2.772	-7.544	15.035192	125-42-55	3.414V
1940	( 14 )	-63863.103	-90498.537						
				7.100	5.157	0.335	2.733500	35-59-32	8.775V
1906	( 21 )	-63856.003	-90493.380						
				1.995	-2.771	2.771	5.526145	305-45-08	3.414V
1907	( 20 )	-63854.008	-90496.151						

TOTAL  
 ZS 59.928953  
 S 29.964476  
 -----  
 測点 29.964476V SQ METER  
 9.064254 ユニ