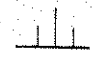
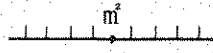


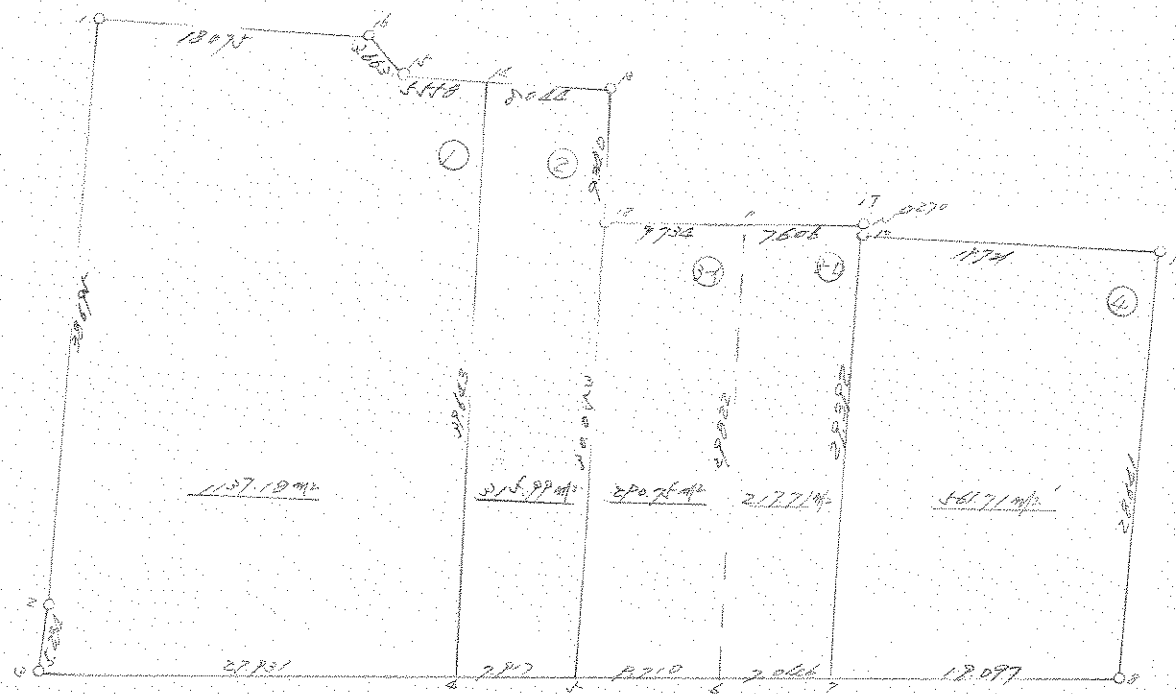


街画区地 原子一覽表 (16 街区)



計算面積 = 
 角切面積 = 
 換地面積 = 



16 街区

*** 木更市 16街区

NO	X	Y	DX	DY	D M D	ZS	A	L
1992 (/)	-63423.356	-90690.719						
1993 (2)	-63450.434	-90718.361	-27.078	-27.642	-27.642	748.490076	225-35-26	38.695
1994 (6)	-63453.865	-90722.313	-3.431	-3.952	-59.236	203.238716	229-02-12	5.234
1995 (4)	-63472.046	-90701.110	-18.181	21.203	-41.985	763.329285	130-36-44	27.931
1996 (7)	-63477.200	-90695.100	-5.154	6.010	-14.772	76.134888	130-36-56	7.917
1997 (4)	-63483.540	-90687.745	-6.340	7.355	-1.407	8.920380	130-45-41	9.710
1998 (7)	-63488.130	-90682.399	-4.590	5.346	11.294	-51.839460	130-38-56	7.046
1999 (8)	-63500.576	-90667.915	-12.446	14.484	31.124	-387.369304	130-40-20	19.097
2000 (9)	-63480.845	-90647.154	19.731	20.761	66.369	1309.526739	46-27-26	28.641
2001 (10)	-63467.390	-90661.572	13.455	-14.418	72.712	978.339960	313-01-16	19.721
2582 (17)	-63467.191	-90661.389	0.199	0.183	58.477	11.636923	42-36-06	0.270
2002 (11)	-63462.088	-90667.029	5.103	-5.640	53.020	270.561060	312-08-18	7.606
2003 (12)	-63455.558	-90674.248	6.530	-7.219	40.161	262.251330	312-07-52	9.734
2004 (16)	-63448.791	-90667.810	6.767	6.438	39.380	266.484460	43-34-22	9.340
2005 (14)	-63443.362	-90673.746	5.429	-5.936	39.882	216.519378	312-26-44	8.044
2006 (15)	-63439.594	-90677.832	3.768	-4.086	29.860	112.512480	312-40-53	5.558
2007 (16)	-63435.932	-90677.737	3.662	0.095	25.869	94.732278	1-29-10	3.663
1992 (/)	-63423.356	-90690.719	12.576	-12.982	12.982	163.261632	314-05-24	18.075

TOTAL

ZS 5046.730821
S 2523.365410

木更市 2523.365410 SQ METER

763.318036 ッホ

*** 測点 刈り口 (/)

NO	X	Y	DX	DY	D M D	2S	A	L
1992 (/)	-63423.356	-90690.719						
1993 (2)	-63450.434	-90718.361	-27.078	-27.642	-27.642	748.490076	225-35-26	38.695v
1994 (3)	-63453.865	-90722.313	-3.431	-3.952	-59.236	203.238716	229-02-12	5.234v
1995 (4)	-63472.046	-90701.110	-18.181	21.203	-41.985	763.329285	130-36-44	27.931v
2005 (/4)	-63443.362	-90673.746	28.684	27.364	6.582	188.798088	43-39-03	39.643v
2006 (/5)	-63439.594	-90677.832	3.768	-4.086	29.860	112.512480	312-40-53	5.558v
2007 (/6)	-63435.932	-90677.737	3.662	0.095	25.869	94.732278	1-29-10	3.663v
1992 (/)	-63423.356	-90690.719	12.576	-12.982	12.982	163.261632	314-05-24	18.075v

TOTAL

2S 2274.362555

S 1137.181277

測点 1137.181277v SQ METER

343.997336 ッホ"

*** 測点 刈り口 (<)

NO	X	Y	DX	DY	D M D	2S	A	L
2005 (/4)	-63443.362	-90673.746						
1995 (<)	-63472.046	-90701.110	-28.684	-27.364	-27.364	784.908976	223-39-03	39.643v
1996 (/)	-63477.200	-90695.100	-5.154	6.010	-48.718	251.092572	130-36-56	7.917v
2003 (12)	-63455.558	-90674.248	21.642	20.852	-21.856	473.007552	43-56-06	30.053v
2004 (/5)	-63448.791	-90667.810	6.767	6.438	5.434	36.771878	43-34-22	9.340v
2005 (/4)	-63443.362	-90673.746	5.429	-5.936	5.936	32.226544	312-26-44	8.044v

TOTAL

2S 631.992418

S 315.996209

測点 315.996209v SQ METER

95.588853 ッホ"

*** メンテナンス履歴 (Ⅱ-Ⅰ)

NO	X	Y	DX	DY	D M D	2S	A	L
2003 (Ⅱ)	-63455.558	-90674.248						
1996 (Ⅰ)	-63477.200	-90695.100	-21.642	-20.852	-20.852	451.278984	223-56-06	30.053v
1997 (Ⅲ)	-63483.540	-90687.745	-6.340	7.355	-34.349	217.772660	130-45-41	9.710v
2002 (Ⅰ)	-63462.088	-90667.029	21.452	20.716	-6.278	-134.675656	44-00-00	29.822v
2003 (Ⅱ)	-63455.558	-90674.248	6.530	-7.219	7.219	47.140070	312-07-52	9.734v

TOTAL

2S 581.516058
S 290.758029

メンテナンス 290.758029v SQ METER

87.954303 ユニ

*** メンテナンス履歴 (Ⅱ-Ⅱ)

NO	X	Y	DX	DY	D M D	2S	A	L
2002 (Ⅰ)	-63462.088	-90667.029						
1997 (Ⅰ)	-63483.540	-90687.745	-21.452	-20.716	-20.716	444.399632	224-00-00	29.822v
1998 (Ⅲ)	-63488.130	-90682.399	-4.590	5.346	-36.086	165.634740	130-38-56	7.046v
2001 (Ⅲ)	-63467.390	-90661.572	20.740	20.827	-9.913	-205.595620	45-07-12	29.392v
2582 (Ⅰ)	-63467.191	-90661.389	0.199	0.183	11.097	2.208303	42-36-06	0.270v
2002 (Ⅰ)	-63462.088	-90667.029	5.103	-5.640	5.640	28.780920	312-08-18	7.606v

TOTAL

2S 435.427975
S 217.713987

メンテナンス 217.713987v SQ METER

65.858481 ユニ

*** 測点# 位置 (4)

NO	X	Y	DX	DY	D M D	2S	A	L
2001 (10)	-63467.390	-90661.572						
1998 (7)	-63488.130	-90682.399	-20.740	-20.827	-20.827	431.951980	225-07-12	29.392 _v
1999 (8)	-63500.576	-90667.915	-12.446	14.484	-27.170	338.157820	130-40-20	19.097 _v
2000 (9)	-63480.845	-90647.154	19.731	20.761	8.075	159.327825	46-27-26	28.641 _v
2001 (10)	-63467.390	-90661.572	13.455	-14.418	14.418	193.994190	313-01-16	19.721 _v

TOTAL

2S 1123.431815
S 561.715907

測点# 561.715907_v SQ METER

169.919062 測点#