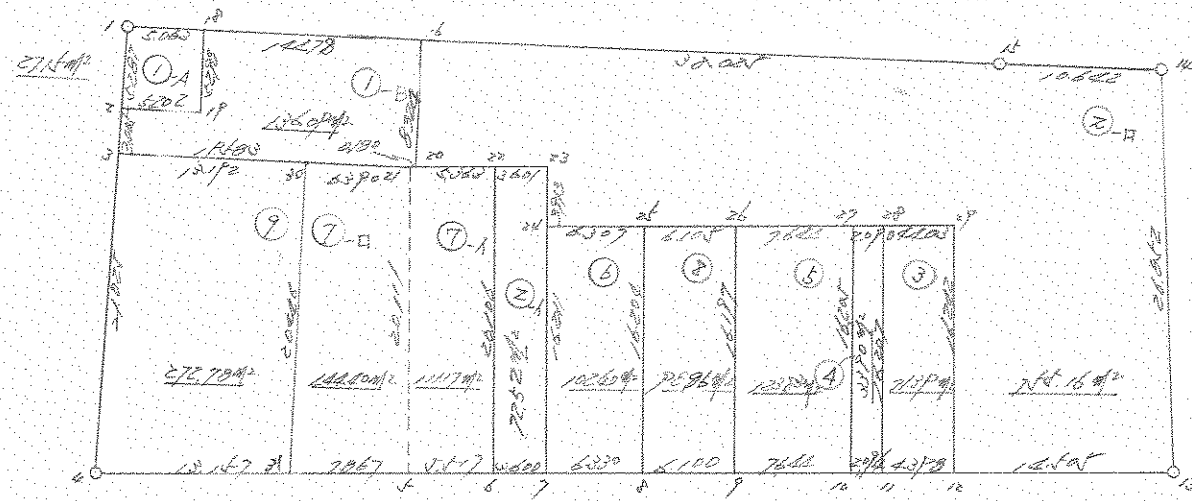


街 区 地 区 原 子 一 覽 表 (14 街 区)



計算面積 = m²
 角切面積 = -)
 換地面積 =



14
街 区

*** マルチゲイジ (4街区)

NO	X	Y	DX	DY	D M D	2S	A	L
2385 (/)	-63491.037	-90634.646						
2386 (2)	-63494.679	-90638.479	-3.642	-3.833	-3.833	13.959786	226-27-49	5.287
2387 (3)	-63496.749	-90640.657	-2.070	-2.178	-9.844	20.377080	226-27-23	3.005
2388 (4)	-63511.217	-90655.912	-14.468	-15.255	-27.277	394.643636	226-31-00	21.025
2389 (5)	-63525.429	-90640.420	-14.212	15.492	-27.040	384.292480	132-31-57	21.023
2390 (6)	-63529.154	-90636.351	-3.725	4.069	-7.479	27.859275	132-28-22	5.517
2391 (7)	-63531.597	-90633.707	-2.443	2.644	-0.766	1.871338	132-44-14	3.600
2392 (8)	-63535.864	-90629.031	-4.267	4.676	6.554	-27.965918	132-22-53	6.330
2393 (9)	-63539.978	-90624.527	-4.114	4.504	15.734	-64.729676	132-24-32	6.100
2394 (10)	-63545.150	-90618.899	-5.172	5.628	25.866	-133.778952	132-34-56	7.644
2395 (11)	-63546.564	-90617.354	-1.414	1.545	33.039	-46.717146	132-27-54	2.094
2396 (12)	-63549.531	-90614.108	-2.967	3.246	37.830	-112.241610	132-25-44	4.398
2397 (13)	-63559.332	-90603.415	-9.801	10.693	51.769	-507.387969	132-30-28	14.505
2398 (14)	-63538.872	-90586.025	20.460	17.390	79.852	1633.771920	40-21-46	26.852
2399 (15)	-63531.439	-90593.641	7.433	-7.616	89.626	666.190058	314-18-12	10.642
2400 (16)	-63504.843	-90620.817	26.596	-27.176	54.834	1458.365064	314-22-55	38.025
2401 (18)	-63494.614	-90631.063	10.229	-10.246	17.412	178.107348	314-57-09	14.478
2385 (/)	-63491.037	-90634.646	3.577	-3.583	3.583	12.816391	314-57-07	5.063

TOTAL

2S 3899.433105
S 1949.716552

マルチ 1949.716552 SQ METER

589.789257 ユニツ

*** メルキ ケイサン (/-A)

NO	X	Y	DX	DY	D M D	2S	A	L
2385 (/)	-63491.037	-90634.646						
2386 (2)	-63494.679	-90638.479	-3.642	-3.833	-3.833	13.959786	226-27-49	5.287✓
2402 (/P)	-63498.363	-90634.806	-3.684	3.673	-3.993	14.710212	135-05-08	5.202✓
2401 (/D)	-63494.614	-90631.063	3.749	3.743	3.423	12.832827	44-57-15	5.298✓
2385 (/)	-63491.037	-90634.646	3.577	-3.583	3.583	12.816391	314-57-07	5.063✓

TOTAL

2S 54.319216
S 27.159608

メルキ 27.159608✓ SQ METER

8.215781 ツホ"

*** メルキ ケイサン (/-B)

NO	X	Y	DX	DY	D M D	2S	A	L
2401 (/D)	-63494.614	-90631.063	-3.749	-3.743	-3.743	14.032507	224-57-15	5.298✓
2402 (/P)	-63498.363	-90634.806	3.684	-3.673	-11.159	-41.109756	315-05-08	5.202✓
2386 (2)	-63494.679	-90638.479	-2.070	-2.178	-17.010	35.210700	226-27-23	3.005✓
2387 (/)	-63496.749	-90640.657	-13.861	13.833	-5.355	74.225655	135-03-29	19.583
2404 (2/)	-63510.610	-90626.824	-0.126	0.128	8.606	-1.084356	134-32-56	0.180✓
2403 (20)	-63510.736	-90626.696	5.893	5.879	14.613	86.114409	44-55-55	8.324✓
2400 (/6)	-63504.843	-90620.817	10.229	-10.246	10.246	104.806334	314-57-09	14.478✓
2401 (/D)	-63494.614	-90631.063						

TOTAL

2S 272.195493
S 136.097746

メルキ 136.097746✓ SQ METER

41.169568 ツホ"

*** 木口板 欠り (2-1)

NO	X	Y	DX	DY	D M D	2S	A	L
2405 (2/)	-63514.356	-90622.739						
2390 (✓)	-63529.154	-90636.351	-14.798	-13.612	-13.612	201.430376	222-36-34	20.106v
2391 (✓)	-63531.597	-90633.707	-2.443	2.644	-24.580	60.048940	132-44-14	3.600v
2407 (22)	-63519.674	-90622.724	11.923	10.983	-10.953	-130.592619	42-39-00	16.211v
2406 (20)	-63516.787	-90620.083	2.887	2.641	2.671	7.711177	42-27-07	3.913v
2405 (2/)	-63514.356	-90622.739	2.431	-2.656	2.656	6.456736	312-28-03	3.601v

TOTAL

2S 145.054610
S 72.527305

木口板 72.527305v SQ METER

21.939509 ツホ"

*** 測距機 ガイソ (2-17)

NO	X	Y	DX	DY	D M D	2S	A	L
2400 (16)	-63504.843	-90620.817						
2403 (20)	-63510.736	-90626.696	-5.893	-5.879	-5.879	34.644947	224-55-55	8.324✓
2405 (22)	-63514.356	-90622.739	-3.620	3.957	-7.801	28.239620	132-27-12	5.363✓
2406 (20)	-63516.787	-90620.083	-2.431	2.656	-1.188	2.888028	132-28-03	3.601✓
2407 (26)	-63519.674	-90622.724	-2.887	-2.641	-1.173	3.386451	222-27-07	3.913✓
2408 (24)	-63523.930	-90618.070	-4.256	4.654	0.840	-3.575040	132-26-32	6.307✓
2409 (26)	-63528.053	-90613.567	-4.123	4.503	9.997	-41.217631	132-28-39	6.105✓
2410 (27)	-63533.219	-90607.933	-5.166	5.634	20.134	-104.012244	132-31-07	7.644✓
2411 (20)	-63534.628	-90606.390	-1.409	1.543	27.311	-38.481199	132-24-03	2.090✓
2412 (28)	-63537.573	-90603.117	-2.945	3.273	32.127	-94.614015	131-58-50	4.403✓
2396 (12)	-63549.531	-90614.108	-11.958	-10.991	24.409	-291.882822	222-35-14	16.242✓
2397 (10)	-63559.332	-90603.415	-9.801	10.693	24.111	-236.311911	132-30-28	14.505✓
2398 (14)	-63538.872	-90586.025	20.460	17.390	52.194	1067.889240	40-21-46	26.852✓
2399 (14)	-63531.439	-90593.641	7.433	-7.616	61.968	460.608144	314-18-12	10.642✓
2400 (16)	-63504.843	-90620.817	26.596	-27.176	27.176	722.772896	314-22-55	38.025✓

TOTAL

2S 1510.334464
S 755.167232

測距機 755.167232 ✓ SQ METER

228.438087 測距機

*** 米地付 刈付 (ノ街区)

NO	X	Y	DX	DY	D M D	2S	A	L
2462 (/)	-63303.580	-90839.584						
2463 (2)	-63334.298	-90861.287	-30.718	-21.703	-21.703	666.672754	215-14-32	37.611
2464 (4)	-63343.911	-90850.098	-9.613	11.189	-32.217	309.702021	130-40-03	14.751
2465 (4)	-63359.997	-90831.407	-16.086	18.691	-2.337	37.592982	130-42-58	24.660
2466 (4)	-63366.885	-90823.402	-6.888	8.005	24.359	-167.784792	130-42-39	10.561
2467 (6)	-63453.419	-90722.850	-86.534	100.552	132.916	-11501.753144	130-42-54	132.661
2468 (7)	-63449.925	-90718.830	3.494	4.020	237.488	829.783072	49-00-16	5.326
2469 (8)	-63439.526	-90708.203	10.399	10.627	252.135	2621.951865	45-37-17	14.869
2470 (8)	-63327.227	-90835.623	112.299	-127.420	135.342	15198.771258	311-23-26	169.844
2471 (10)	-63315.353	-90825.321	11.874	10.302	18.224	216.391776	40-56-43	15.720
2462 (/)	-63303.580	-90839.584	11.773	-14.263	14.263	167.918299	309-32-13	18.494

TOTAL

2S 8379.246091
S 4189.623045

米地付 4189.623045 SQ METER

1267.360971 ツホ"

*** ムネキ ケイサツ (W)

NO	X	Y	DX	DY	D M D	2S	A	L
2411 (20)	-63534.628	-90606.390						
2395 (//)	-63546.564	-90617.354	-11.936	-10.964	-10.964	130.866304	222-34-10	16.207✓
2396 (/2)	-63549.531	-90614.108	-2.967	3.246	-18.682	55.429494	132-25-44	4.398✓
2412 (2P)	-63537.573	-90603.117	11.958	10.991	-4.445	-53.153310	42-35-14	16.242✓
2411 (20)	-63534.628	-90606.390	2.945	-3.273	3.273	9.638985	311-58-50	4.403✓

TOTAL

2S 142.781473
S 71.390736

ムネキ 71.390736✓ SQ METER

21.595697 ッホ"

*** ムネキ ケイサツ (4)

NO	X	Y	DX	DY	D M D	2S	A	L
2410 (27)	-63533.219	-90607.933						
2394 ()	-63545.150	-90618.899	-11.931	-10.966	-10.966	130.835346	222-35-12	16.205 ✓
2395 (10)	-63546.564	-90617.354	-1.414	1.545	-20.387	28.827218	132-27-54	2.094✓
2411 (20)	-63534.628	-90606.390	11.936	10.964	-7.878	-94.031808	42-34-10	16.207✓
2410 (27)	-63533.219	-90607.933	1.409	-1.543	1.543	2.174087	312-24-03	2.090 ✓

TOTAL

2S 67.804843
S 33.902421

ムネキ 33.902421、 SQ METER

10.255482 ッホ"

14街区

*** 測量点 調査 (4-1)

NO	X	Y	DX	DY	D M D	2S	A	L
2410 ()	-63533.219	-90607.933						
			-11.931	-10.966	-10.966	130.835346	222-35-12	16.205
2394 ()	-63545.150	-90618.899						
			-0.135	0.148	-21.784	2.940840	132-22-12	0.200
2644 ()	-63545.285	-90618.751						
			11.931	10.966	-10.670	-127.303770	42-35-12	16.205
2643 ()	-63533.354	-90607.785						
			0.135	-0.148	0.148	0.019980	312-22-12	0.200
2410 ()	-63533.219	-90607.933						
			0.000	0.000	0.000	-0.000000	0-00-00	0.000
2410 ()	-63533.219	-90607.933						

TOTAL
 2S 6.492396
 S 3.246198

 測量点 3.246198 SQ METER
 0.981974 ㎡

*** 測量点 調査 (4-1)

NO	X	Y	DX	DY	D M D	2S	A	L
2643 ()	-63533.354	-90607.785						
			-11.931	-10.966	-10.966	130.835346	222-35-12	16.205
2644 ()	-63545.285	-90618.751						
			-1.279	1.397	-20.535	26.264265	132-28-31	1.894
2395 ()	-63546.564	-90617.354						
			11.936	10.964	-8.174	-97.564864	42-34-10	16.207
2411 ()	-63534.628	-90606.390						
			1.274	-1.395	1.395	1.777230	312-24-15	1.889
2643 ()	-63533.354	-90607.785						

TOTAL
 2S 61.311977
 S 30.655988

 測量点 30.655988 SQ METER
 9.273436 ㎡

*** メンキ クイザン (5)

NO	X	Y	DX	DY	D M D	2S	A	L
2409 (26)	-63528.053	-90613.567						
			-11.925	-10.960	-10.960	130.698000	222-35-08	16.197v
2393 (7)	-63539.978	-90624.527						
			-5.172	5.628	-16.292	84.262224	132-34-56	7.644v
2394 (10)	-63545.150	-90618.899						
			11.931	10.966	0.302	3.603162	42-35-12	16.205v
2410 (27)	-63533.219	-90607.933						
			5.166	-5.634	5.634	29.105244	312-31-07	7.644v

TOTAL

2S 247.668630
S 123.834315

メンキ 123.834315v SQ METER

37.459880 ッホ"

*** メンキ クイザン (6)

NO	X	Y	DX	DY	D M D	2S	A	L
2407 (24)	-63519.674	-90622.724						
			-11.923	-10.983	-10.983	130.950309	222-39-00	16.211v
2391 (7)	-63531.597	-90633.707						
			-4.267	4.676	-17.290	73.776430	132-22-53	6.330v
2392 (8)	-63535.864	-90629.031						
			11.934	10.961	-1.653	-19.726902	42-33-59	16.204v
2408 (24)	-63523.930	-90618.070						
			4.256	-4.654	4.654	19.807424	312-26-32	6.307v
2407 (24)	-63519.674	-90622.724						

TOTAL

2S 204.807261
S 102.403630

メンキ 102.403630v SQ METER

30.977098 ッホ"

*** 測点キ ヲイサシ (7-イ)

NO	X	Y	DX	DY	D M D	2S	A	L
2404 (2/)	-63510.610	-90626.824						
2389 (✓)	-63525.429	-90640.420	-14.819	-13.596	-13.596	201.479124	222-32-08	20.111✓
2390 (4)	-63529.154	-90636.351	-3.725	4.069	-23.123	86.133175	132-28-22	5.517✓
2405 (22)	-63514.356	-90622.739	14.798	13.612	-5.442	-80.530716	42-36-34	20.106✓
2403 (20)	-63510.736	-90626.696	3.620	-3.957	4.213	15.251060	312-27-12	5.363✓
2404 (2/)	-63510.610	-90626.824	0.126	-0.128	0.128	0.016128	314-32-56	0.180✓

TOTAL

2S 222.348771
S 111.174385

測点キ 111.174385 SQ METER

33.630251 ヲホ

*** 測点キ ヲイサシ (7-ロ)

NO	X	Y	DX	DY	D M D	2S	A	L
2387 ()	-63496.749	-90640.657						
2388 ()	-63511.217	-90655.912	-14.468	-15.255	-15.255	220.709340	226-31-00	21.025
2389 ()	-63525.429	-90640.420	-14.212	15.492	-15.018	213.435816	132-31-57	21.023
2404 ()	-63510.610	-90626.824	14.819	13.596	14.070	208.503330	42-32-08	20.111
2387 ()	-63496.749	-90640.657	13.861	-13.833	13.833	191.739213	315-03-29	19.583

TOTAL

2S 834.387699
S 417.193849

測点キ 417.193849 SQ METER

126.201139 ヲホ

*** 測点データ (測点)

NO	X	Y	DX	DY	D M D	ZS	A	L
2408 (測点)	-63523.930	-90618.070						
2392 (測点)	-63535.864	-90629.031	-11.934	-10.961	-10.961	130.808574	222-33-59	16.204v
2393 (測点)	-63539.978	-90624.527	-4.114	4.504	-17.418	71.657652	132-24-32	6.100v
2409 (測点)	-63528.053	-90613.567	11.925	10.960	-1.954	-23.301450	42-35-08	16.197v
2408 (測点)	-63523.930	-90618.070	4.123	-4.503	4.503	18.565869	312-28-39	6.105v

TOTAL

ZS 197.730645

S 98.865322

測点 98.865322v SQ METER

29.906760 リボ"

*** メンピキ ケイサツ (7)

NO		X	Y	DX	DY	D M D	2S	A	L
2387	(ω)	-63496.749	-90640.657						
				-14.468	-15.255	-15.255	220.709340	226-31-00	21.025✓
2388	(≪)	-63511.217	-90655.912						
				-8.894	9.695	-20.815	185.128610	132-31-58	13.157✓
2608	(ω/)	-63520.111	-90646.217						
				14.024	14.879	3.759	52.716216	46-41-40	20.446✓
2609	(ω〇)	-63506.087	-90631.338						
				9.338	-9.319	9.319	87.020822	315-03-30	13.192✓

TOTAL
 2S 545.574988
 S 272.787494

 メンピキ 272.787494✓ SQ METER
 82.518216 ツホ"

*** メンピキ ケイサツ (7-9)

NO		X	Y	DX	DY	D M D	2S	A	L
2609	(ω〇)	-63506.087	-90631.338						
				-14.024	-14.879	-14.879	208.663096	226-41-40	20.446✓
2608	(ω/)	-63520.111	-90646.217						
				-5.318	5.797	-23.961	127.424598	132-31-57	7.867✓
2389	(✓)	-63525.429	-90640.420						
				14.819	13.596	-4.568	-67.693192	42-32-08	20.111✓
2404	(ω/)	-63510.610	-90626.824						
				4.523	-4.514	4.514	20.416822	315-03-25	6.390✓
2609	(ω〇)	-63506.087	-90631.338						

TOTAL
 2S 288.811324
 S 144.405662

 メンピキ 144.405662✓ SQ METER
 43.682712 ツホ"