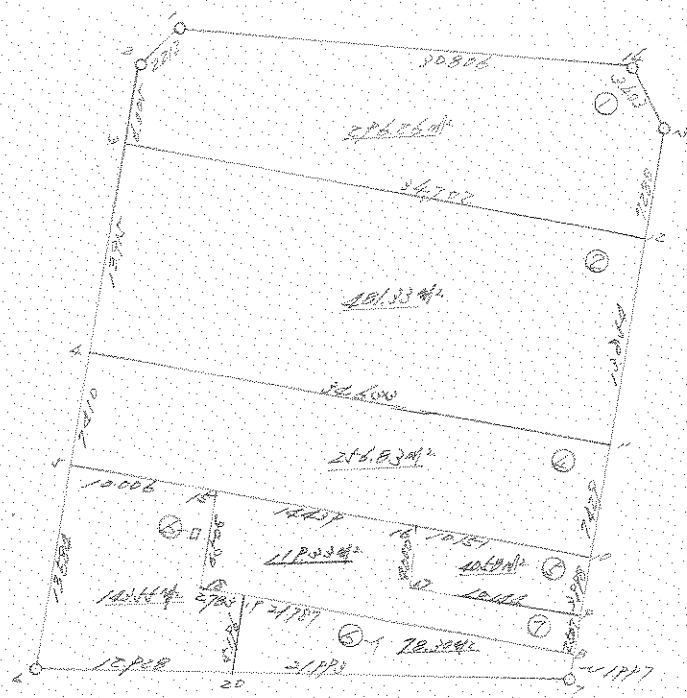


# 街画区地 原子一覽表 (12 街区)



計算面積 = \_\_\_\_\_ m<sup>2</sup>  
 角切面積 = \_\_\_\_\_  
 換地面積 = \_\_\_\_\_



\*\*\* メンチ クイック ( 12街区 )

NO		X	Y	DX	DY	D M D	2S	A	L
2317	( 1 )	-63624.091	-90571.364						
2318	( 2 )	-63624.299	-90573.566	-0.208	-2.202	-2.202	0.458016	264-36-14	2.212
2319	( 3 )	-63628.794	-90577.548	-4.495	-3.982	-8.386	37.695070	221-32-13	6.005
2320	( 4 )	-63639.222	-90586.761	-10.428	-9.213	-21.581	225.046668	221-27-37	13.915
2321	( 5 )	-63644.778	-90591.664	-5.556	-4.903	-35.697	198.332532	221-25-39	7.410
2322	( 6 )	-63654.954	-90600.662	-10.176	-8.998	-49.598	504.709248	221-29-04	13.584
2323	( 7 )	-63662.028	-90589.841	-7.074	10.821	-47.775	337.960350	123-10-26	12.928
2324	( 8 )	-63674.062	-90571.432	-12.034	18.409	-18.545	223.170530	123-10-22	21.993
2325	( 9 )	-63672.576	-90570.098	1.486	1.334	1.198	1.780228	41-54-53	1.997
2326	( 10 )	-63670.708	-90568.426	1.868	1.672	4.204	7.853072	41-49-51	2.507
2327	( 11 )	-63667.721	-90565.769	2.987	2.657	8.533	25.488071	41-39-14	3.998
2328	( 12 )	-63662.175	-90560.826	5.546	4.943	16.133	89.473618	41-42-35	7.429
2329	( 13 )	-63651.838	-90551.602	10.337	9.224	30.300	313.211100	41-44-36	13.854
2330	( 14 )	-63646.395	-90546.756	5.443	4.846	44.370	241.505910	41-40-45	7.288
2331	( 15 )	-63643.005	-90547.048	3.390	-0.292	48.924	165.852360	355-04-37	3.403
2317	( 16 )	-63624.091	-90571.364	18.914	-24.316	24.316	459.912824	307-52-38	30.806

TOTAL

2S 2832.449597

S 1416.224798

メンチ 1416.224798 SQ MEIER

428.408001 ッホ

\*\*\* 測点 1 ( / )

NO		X	Y	DX	DY	D M D	2S	A	L
2317	( / )	-63624.091	-90571.364						
2318	( 2 )	-63624.299	-90573.566	-0.208	-2.202	-2.202	0.458016	264-36-14	2.212v
2319	( 6 )	-63628.794	-90577.548	-4.495	-3.982	-8.386	37.695070	221-32-13	6.005v
2329	( /2 )	-63651.838	-90551.602	-23.044	25.946	13.578	-312.891432	131-36-36	34.702v
2330	( /6 )	-63646.395	-90546.756	5.443	4.846	44.370	241.505910	41-40-45	7.288v
2331	( /4 )	-63643.005	-90547.048	3.390	-0.292	48.924	165.852360	355-04-37	3.403v
2317	( / )	-63624.091	-90571.364	18.914	-24.316	24.316	459.912824	307-52-38	30.806v

TOTAL

2S 592.532748  
S 296.266374

測点 296.266374v SQ METER

89.620578 リホ"

\*\*\* 測点 2 ( 2 )

NO		X	Y	DX	DY	D M D	2S	A	L
2319	( 6 )	-63628.794	-90577.548						
2320	( 4 )	-63639.222	-90586.761	-10.428	-9.213	-9.213	96.073164	221-27-37	13.915v
2328	( // )	-63662.175	-90560.826	-22.953	25.935	7.509	-172.354077	131-30-34	34.633v
2329	( /2 )	-63651.838	-90551.602	10.337	9.224	42.668	441.059116	41-44-36	13.854v
2319	( 6 )	-63628.794	-90577.548	23.044	-25.946	25.946	597.899624	311-36-36	34.702v

TOTAL

2S 962.677827  
S 481.338913

測点 481.338913v SQ METER

145.605021 リホ"

\*\*\* ヌシキ 7190 ( 4 )

NO	X	Y	DX	DY	D M D	2S	A	L
2320 ( 4 )	-63639.222	-90586.761						
2321 ( 4 )	-63644.778	-90591.664	-5.556	-4.903	-4.903	27.241068	221-25-39	7.410✓
2332 ( 4 )	-63651.414	-90584.175	-6.636	7.489	-2.317	15.375612	131-32-39	10.006✓
2333 ( 6 )	-63660.989	-90573.367	-9.575	10.808	15.980	-153.008500	131-32-18	14.439✓
2327 ( 10 )	-63667.721	-90565.769	-6.732	7.598	34.386	-231.486552	131-32-30	10.151✓
2328 ( 11 )	-63662.175	-90560.826	5.546	4.943	46.927	260.257142	41-42-35	7.429✓
2320 ( 4 )	-63639.222	-90586.761	22.953	-25.935	25.935	595.286055	311-30-34	34.633✓

TOTAL  
 2S 513.664825  
 S 256.832412  
 ヌシキ 256.832412 SQ METER  
 77.691804 ヌシキ

\*\*\* ヌシキ 7190 ( 4 )

NO	X	Y	DX	DY	D M D	2S	A	L
2333 ( 6 )	-63660.989	-90573.367						
2334 ( 6 )	-63663.983	-90576.020	-2.994	-2.653	-2.653	7.943082	221-32-40	4.000✓
2326 ( 17 )	-63670.708	-90568.426	-6.725	7.594	2.288	-15.386800	131-31-37	10.144✓
2327 ( P )	-63667.721	-90565.769	2.987	2.657	12.539	37.453993	41-39-14	3.998✓
2327 ( 10 )	-63667.721	-90565.769	6.732	7.598	7.598	51.149736	311-32-30	10.151✓
2333 ( 6 )	-63660.989	-90573.367						

TOTAL  
 2S 81.160011  
 S 40.580005  
 ヌシキ 40.580005 SQ METER  
 12.275451 ヌシキ

\*\*\* マルチガイジ ( 6-1 )

NO	X	Y	DX	DY	D M D	2S	A	L
2336 ( 1P )	-63658.129	-90586.406						
2323 ( 20 )	-63662.028	-90589.841	-3.899	-3.435	-3.435	13.393065	221-22-48	5.196✓
2324 ( 7 )	-63674.062	-90571.432	-12.034	18.409	11.539	-138.860326	123-10-22	21.993✓
2325 ( 8 )	-63672.576	-90570.098	1.486	1.334	31.282	46.485052	41-54-53	1.997✓
2336 ( 1P )	-63658.129	-90586.406	14.447	-16.308	16.308	235.601676	311-32-14	21.787✓

TOTAL

2S 156.619467  
S 78.309733

マルチ 78.309733✓ SQ METER

23.688694 ッホ"

\*\*\* マルチガイジ ( 6-14 )

NO	X	Y	DX	DY	D M D	2S	A	L
2321 ( ✓ )	-63644.778	-90591.664						
2322 ( 6 )	-63654.954	-90600.662	-10.176	-8.998	-8.998	91.563648	221-29-04	13.584✓
2323 ( 20 )	-63662.028	-90589.841	-7.074	10.821	-7.175	50.755950	123-10-26	12.928✓
2336 ( 1P )	-63658.129	-90586.406	3.899	3.435	7.081	27.608819	41-22-48	5.196✓
2335 ( 1P )	-63656.284	-90588.489	1.845	-2.083	8.433	15.558885	311-31-58	2.783✓
2332 ( 1P )	-63651.414	-90584.175	4.870	4.314	10.664	51.933680	41-32-08	6.506✓
2321 ( ✓ )	-63644.778	-90591.664	6.636	-7.489	7.489	49.697004	311-32-39	10.006✓

TOTAL

2S 287.117986  
S 143.558993

マルチ 143.558993✓ SQ METER

43.426595 ッホ"

\*\*\* メンバ ｸﾞｲﾀﾝ ( 7 )

NO	X	Y	DX	DY	D M D	2S	A	L
2332 ( /✓ )	-63651.414	-90584.175						
2335 ( /A )	-63656.284	-90588.489	-4.870	-4.314	-4.314	21.009180	221-32-08	6.506✓
2336 ( /P )	-63658.129	-90586.406	-1.845	2.083	-6.545	12.075525	131-31-58	2.783✓
2325 ( /d )	-63672.576	-90570.098	-14.447	16.308	11.846	-171.139162	131-32-14	21.787✓
2326 ( /P )	-63670.708	-90568.426	1.868	1.672	29.826	55.714968	41-49-51	2.507✓
2334 ( /7 )	-63663.983	-90576.020	6.725	-7.594	23.904	160.754400	311-31-37	10.144✓
2333 ( /6 )	-63660.989	-90573.367	2.994	2.653	18.963	56.775222	41-32-40	4.000✓
2332 ( /✓ )	-63651.414	-90584.175	9.575	-10.808	10.808	103.486600	311-32-18	14.439✓

TOTAL

2S 238.676733

S 119.338366

合計 119.338366 SQ MEIER

36.099855 リホ